

ROUSSILLON

With motor “au fil d’eau”



READ CAREFULLY AND KEEP FOR FUTURE REFERENCE



INDEX

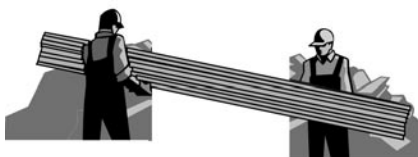
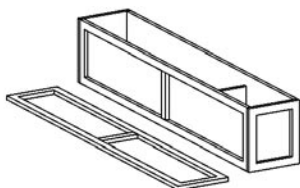
Personnel and material required for unloading and assembly	4 / 30
Components of the automatic pool cover	5 / 30
Warning	6 / 30
Bearing sides and motor assembly	6 / 30
Bearing sides with roller shaft assembly	7 / 30
Assembly in the pool	8 / 30
General installation in the pool	9 / 30
Fixing the plates in the wall level	10 / 30
Installation of beams' cases	11 / 30
Partition assembly	12 / 30
Mounting of Motorized Gear Box	14 / 30
Installation of connection box	15 / 30
Electrical installation	16 / 30
Electrical connections	17 / 30
Limit switch adjustment	18 / 30
Slat assembly	19 / 30
Slat assembly for free-form pool	20 / 30
Slat direction	20 / 30
Stair slats	21 / 30
Mounting of beam and counterweights	22 / 30
Placing strap fasteners for above-ground cover with coping stone	23 / 30
Placing of strap fasteners for above-ground cover without coping stone	24 / 30
Placing of pool cover's strap fasteners	25 / 30
Use of above-ground cover	26 / 30
Winterising of the above-ground cover	27 / 30
Care of above-ground cover	27 / 30
Maintenance instructions	27 / 30
Safety tips	28 / 30
Purchase information and warranties	29 / 30

PERSONNEL AND MATERIAL NEEDED FOR UNLOADING AND ASSEMBLY

UNLOADING



or



CAUTION WITH THE SOLAR SLATS:
Immediately after unpacking, place the slats on the pool water to prevent deformation.

TOOLS REQUIRED FOR ASSEMBLY



Drill and drill bits for concrete Ø 6 - 10 mm

Flat-head screwdrivers

Phillips screwdrivers

Spirit level

10 - 13 - 17 wrench

Nippers

Wire strippers

5- and 6-mm Allen wrench

Hammer

Standard and long (= 10 m) measuring tape

Grease

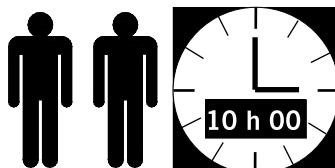
Metal saw



UNLOADING TIME



ASSEMBLY TIME



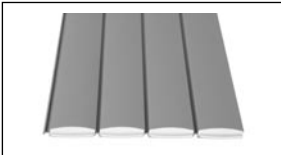
COMPONENTS OF THE AUTOMATIC POOL COVER



One stand for motor side
One stand for bearing side



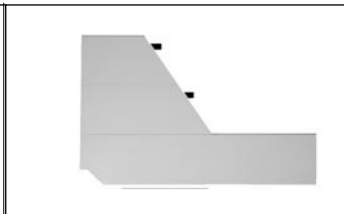
Connection box to fix on deck
Motor and limit switch adjustment device assembly



Slat and strap assembly



Roller shaft



Aluminium beam with/without partition for pit



Grille, electrical box tensioner and counterweight



Installation instructions
Operation, care, winterising and maintenance instructions

WARNING

We recommend before performing any operation to read carefully the installation instructions and to check the following points:

- Check the wall's hardness and in particular those places where the bearing stands have to be placed.
- Make sure there is an efficient overflow drain, the overflow's shaft will be installed at 100 mm from the wall in order to avoid the submergence of the motorized gear box and its electrical box.
- It is recommendable an automatic water level.
- Your automatic cover have been manufactured according to the manufacturing sheet, however we suggest checking, before doing any performance, that the slats can be properly placed in the pool.
- Make sure that the power feeding is carried out from the right side of the pool
- The electrical installation must be done by a properly trained and qualified electrician.
- The electrical box must be protected by a 30 mA circuit breaker. (Not supplied by us)

BEARING SIDES AND MOTOR ASSEMBLY

ASSEMBLY OF MOTOR SIDE



- Install on Deck in order to easily assembly the different components
- Place the highest part of the angle bracket behind the vertical stand
- Assembly the two parts with 6 M6 stainless steel screws and their washers.
- Tighten vigorously with a 5 mm key

ASSEMBLY OF BEARING SIDE



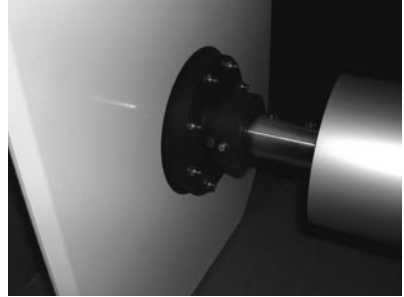
- Proceed as follows:
- Place the highest part of angle bracket behind the vertical stand
- Assembly the two parts with the 6 M6 stainless steel screws and their washers.
- Tighten vigorously with a 5 mm key

Note: The assembly of bearing sides is not obligatory, the horizontal parts can be well positioned and fixed on the wall level to immediately fix the vertical parts on them.

BEARING SIDES WITH ROLLER SHAFT ASSEMBLY

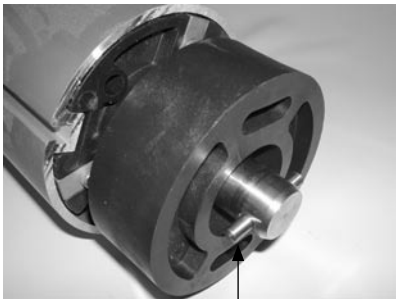
FIXING OF SHAFT ON MOTOR BRACKET

- Place the motorized gear box of the roller shaft next to the motor bracket and fit the cover into the $\varnothing 30$ mm Stainless Steel shaft.
- Make the coupling with two Stainless Steel 8 x 60 mm pins and lock washers under the screws.
- Tighten vigorously with two $\varnothing 13$ mm-keys.

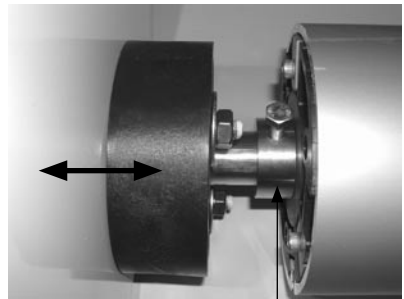


FIXING OF SHAFT ON BEARING SIDE

- Place the bearing side of the roller shaft next to the bearing side.
- Make sure there is a $\varnothing 8$ mm bolt at the end of bearing shaft and attach the black bearing to the bearing side. Place the bearing side in the center and fix both parts with the two nuts.
- Make sure that the bearing shaft slides well through the roller shaft.



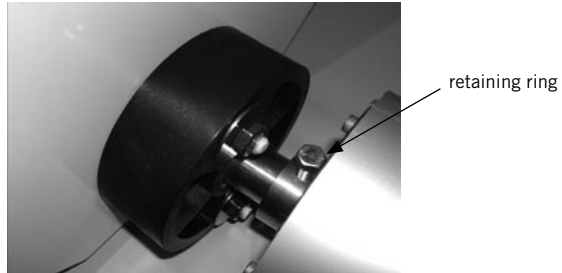
bolt $\varnothing 8$ mm



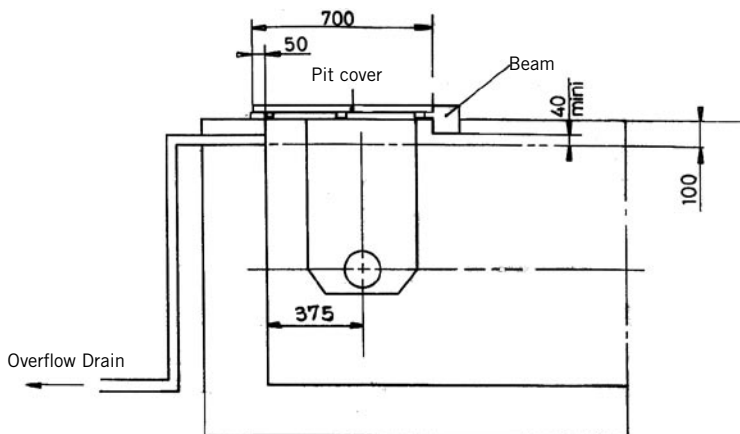
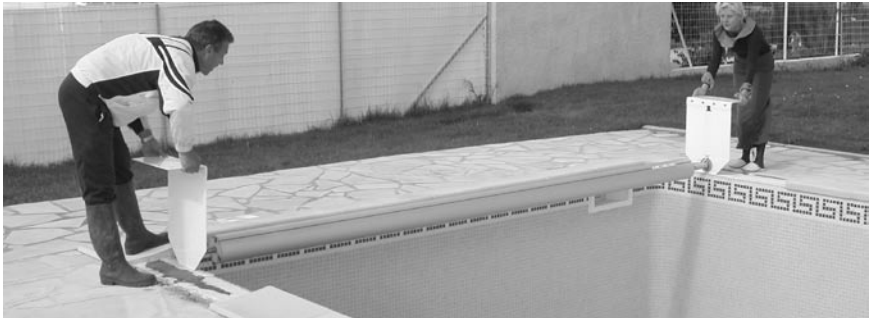
retaining ring

ASSEMBLY IN THE POOL

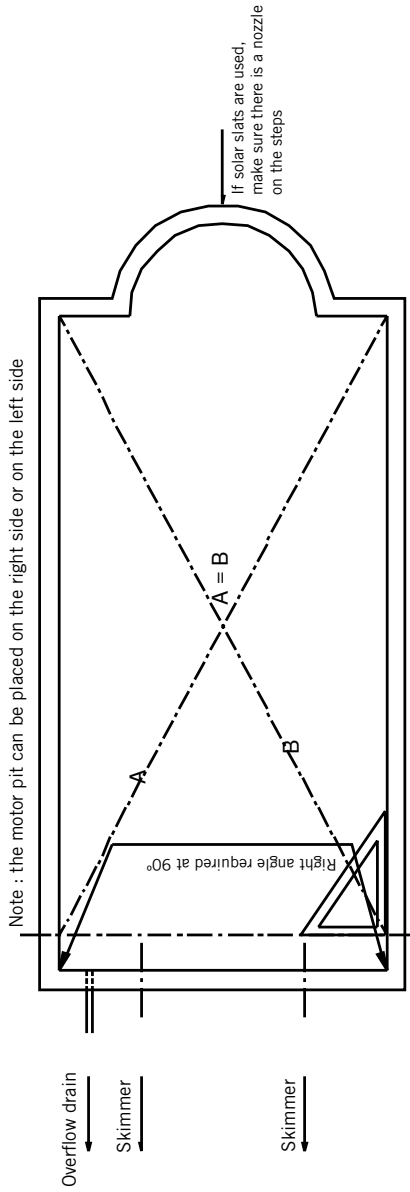
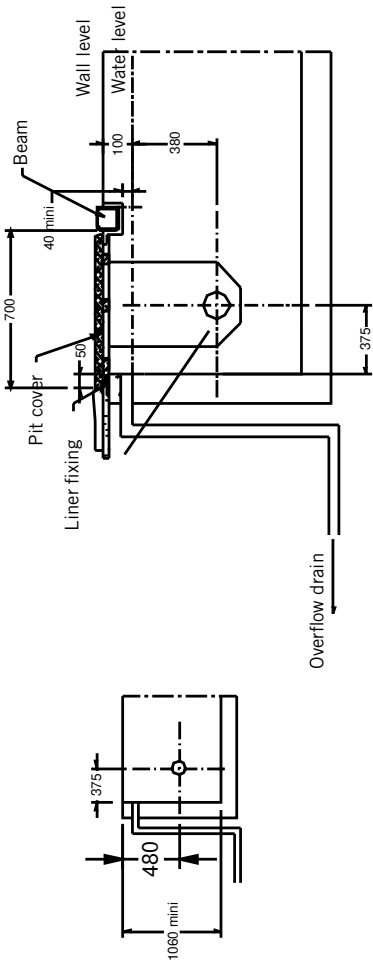
- Loose the fixing screws from the retaining ring of the bearing shaft and introduce the assembly: bracket - bearing - bearing shaft towards the interior of roller shaft in order to get the smallest dimension of the roller and fix it easier.



- Proceed with the setting of the system between two workers.



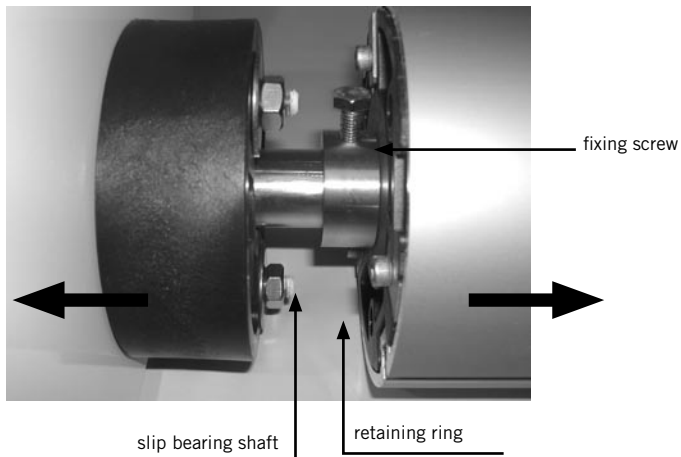
GENERAL INSTALLATION IN THE POOL



Nota: The axis of the roller shaft and bearing should be perfectly parallel for a good assembly, and at 90° to the pool length wall

FIXING OF PLATES

After having placed the roller in the pool, move the bearing sides of the roller up against the walls of the pool. To do so, make the bearing shaft slide and fix it by tightening the hexagonal M8 screw of the retaining ring (see drawings) against the roller tube.



After having decided the location and angle brackets of the roller, according to the installation system indicated on the previous page, it will be best to fix the plates by a $\varnothing 10$ mm drill, dowels and stainless steel screws included in the pack.



Drill $\varnothing 10$ mm depth $\varnothing 100$ mm

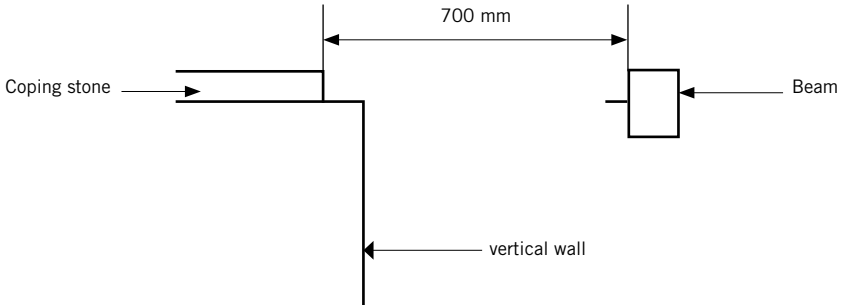


Placing of brass dowels $\varnothing 10$ mm
and stainless steel countersunk-head
screw M8x60

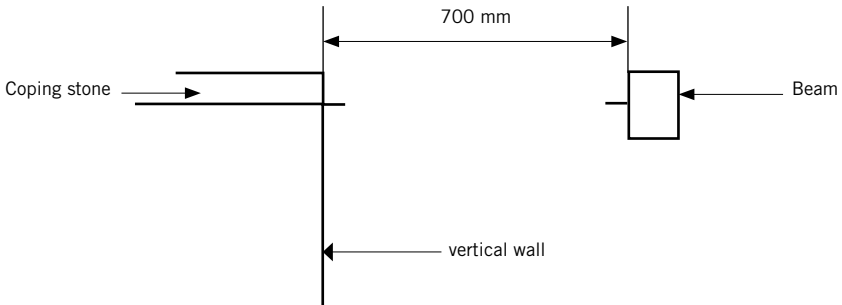
INSTALLATION OF BEAMS' CASES

The installation of the beams' cases is rigorous. Two cases can come up:

- **With coping recoiling from 50 mm / vertical wall of the pool:**
the coping stones have been cut (in the case of existing coping stone) or installed reculing from 50 mm (piscine neuve)



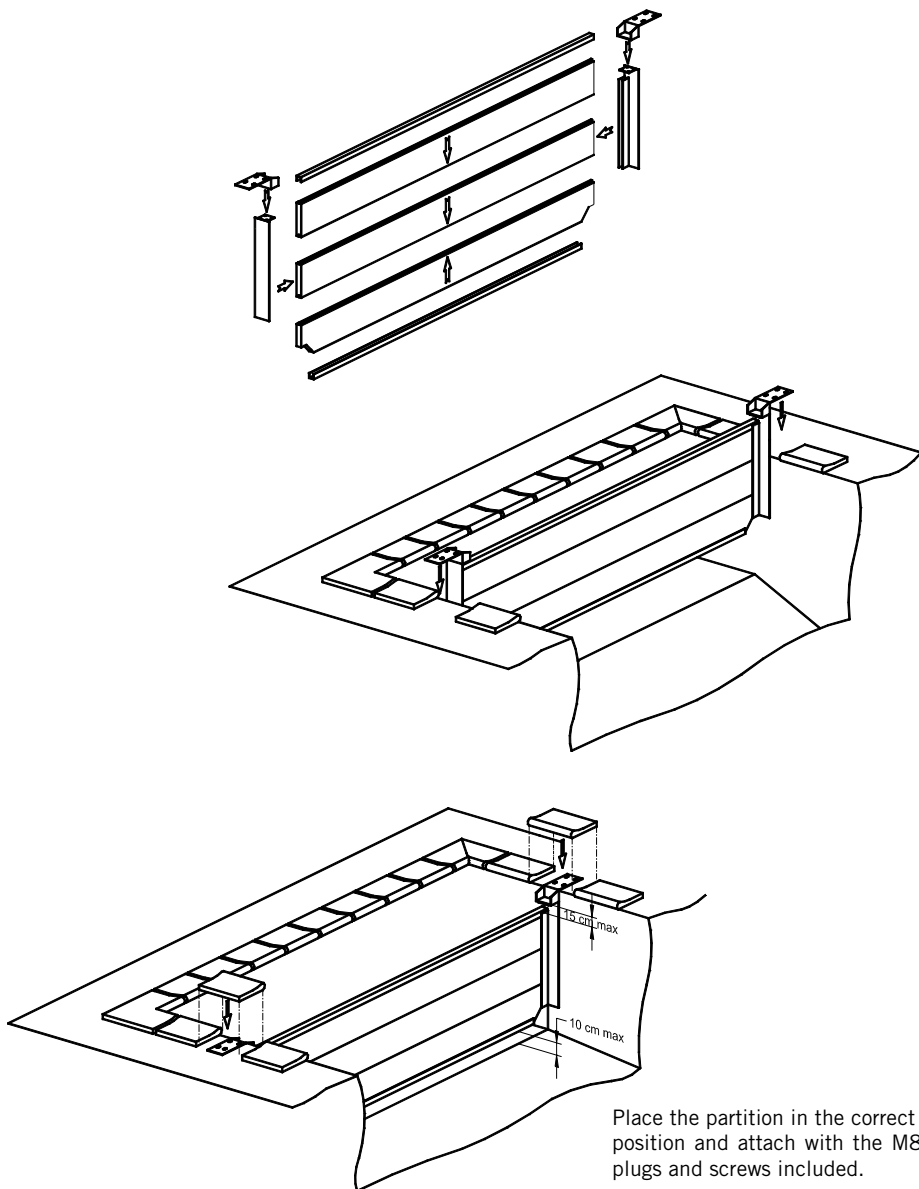
- **Without coping stone, with Stainless Steel frame angles to attach to the wall:**



Nota: In the case of a model with partition, see also pages: 12 and 13

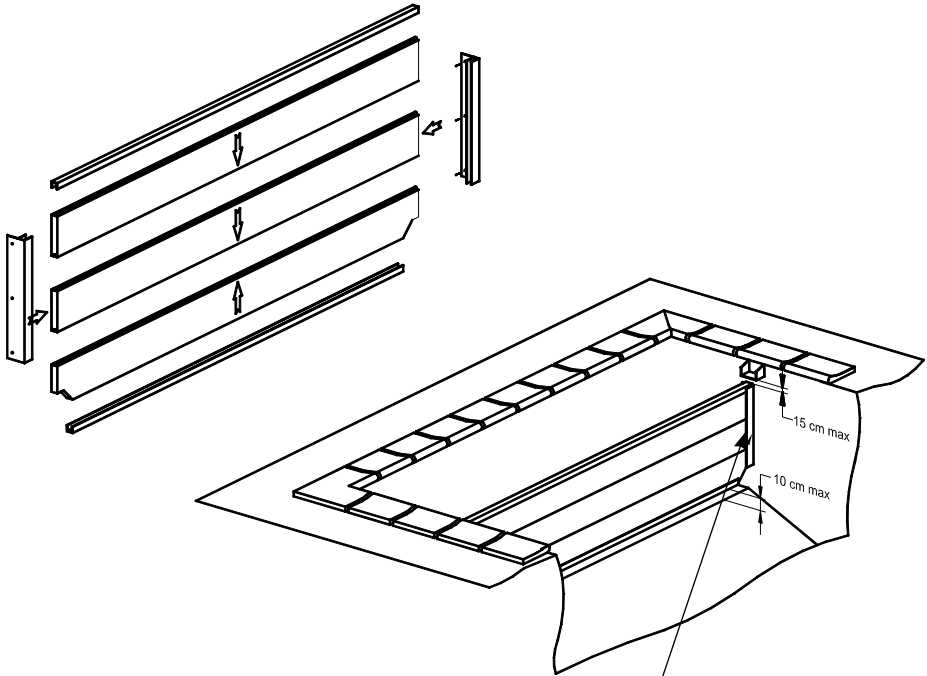
PARTITION ASSEMBLY

HANGING PARTITION MODEL (attached below the coping stone)

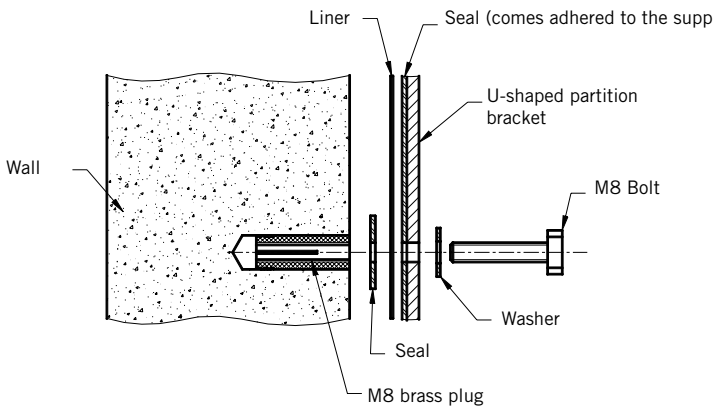


PARTITION ASSEMBLY

PARTITION MODEL FOR ATTACHMENT TO VERTICAL WALLS

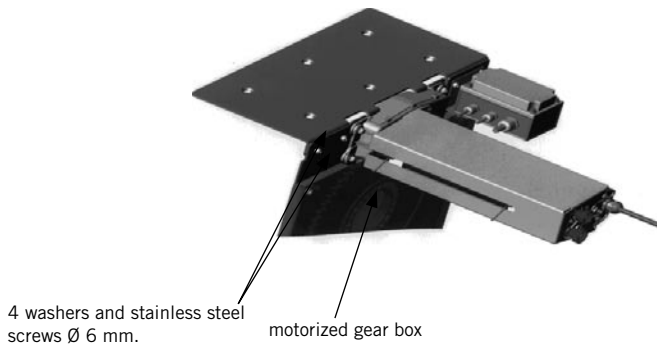


MAKE SURE THE GASKET IS BEHIND THE LINER



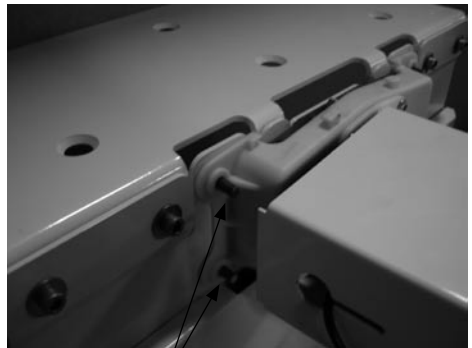
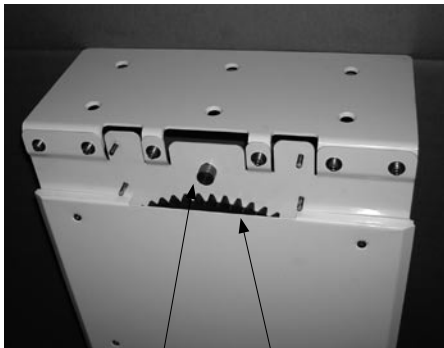
MOUNTING OF MOTORIZED GEAR BOX

- The motorized gear box is reversible, it can be installed both on the right or on the left side, however, we recommend to install the limit switch device between the motorized gear box and the interior wall of the pool in order to make easier the adjustments.



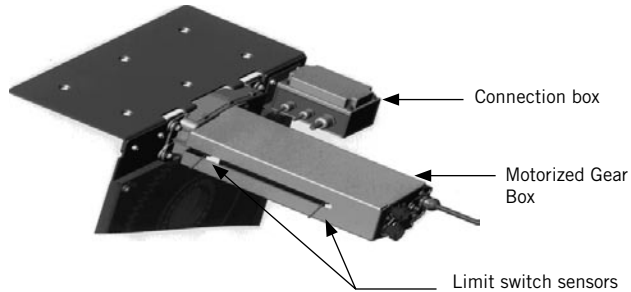
For assembly proceed as follows:

- Grease lightly the stainless steel steering ring of the motorized gear box on the bearing
- Place the motorized gear box in the 4 Ø 6 mm-pins.
- In order to make easier the introducción of the pinion motor, it may be necessary to turn lightly the inferior pinion or the roller shaft.



INSTALLATION OF CONNECTION BOX

The connection box will be installed in the motor bracket - on the opposite side of the motorized gear box limit switch device.



A. Fixing the bearing angle

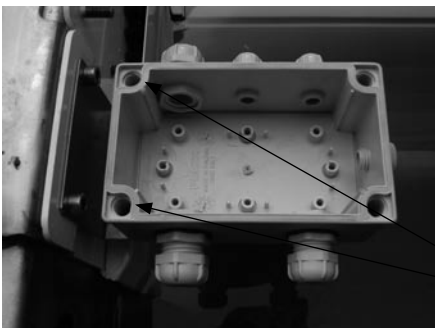


- Fix the stainless steel angle bracket in the motor bracket by using the 2 hexagonal M6 screws.

Fixing screw

Note: the highest part of the angle bracket is the vertical part.

B. Fixation de la boîte sur la cornière support



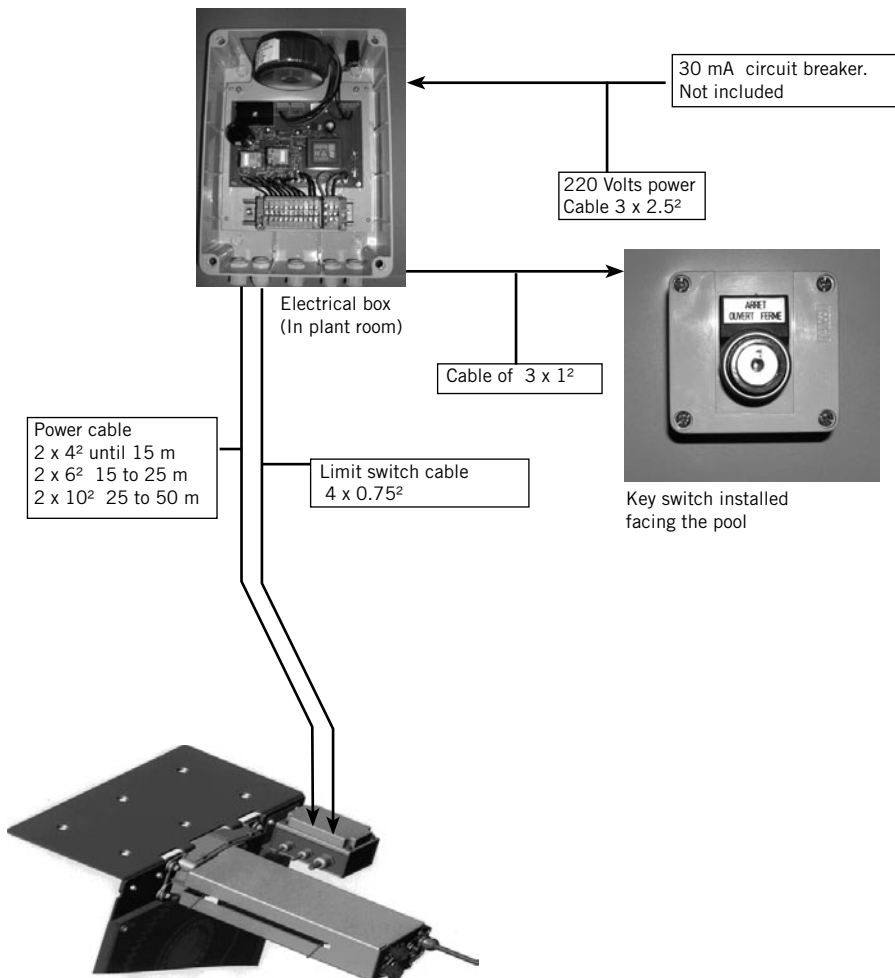
- The two fixing bolts are inside the box.
- Insert the stainless steel fixing screws of the box in its corresponding pitches and assembly with the two M4 nuts.

Screw pitch.

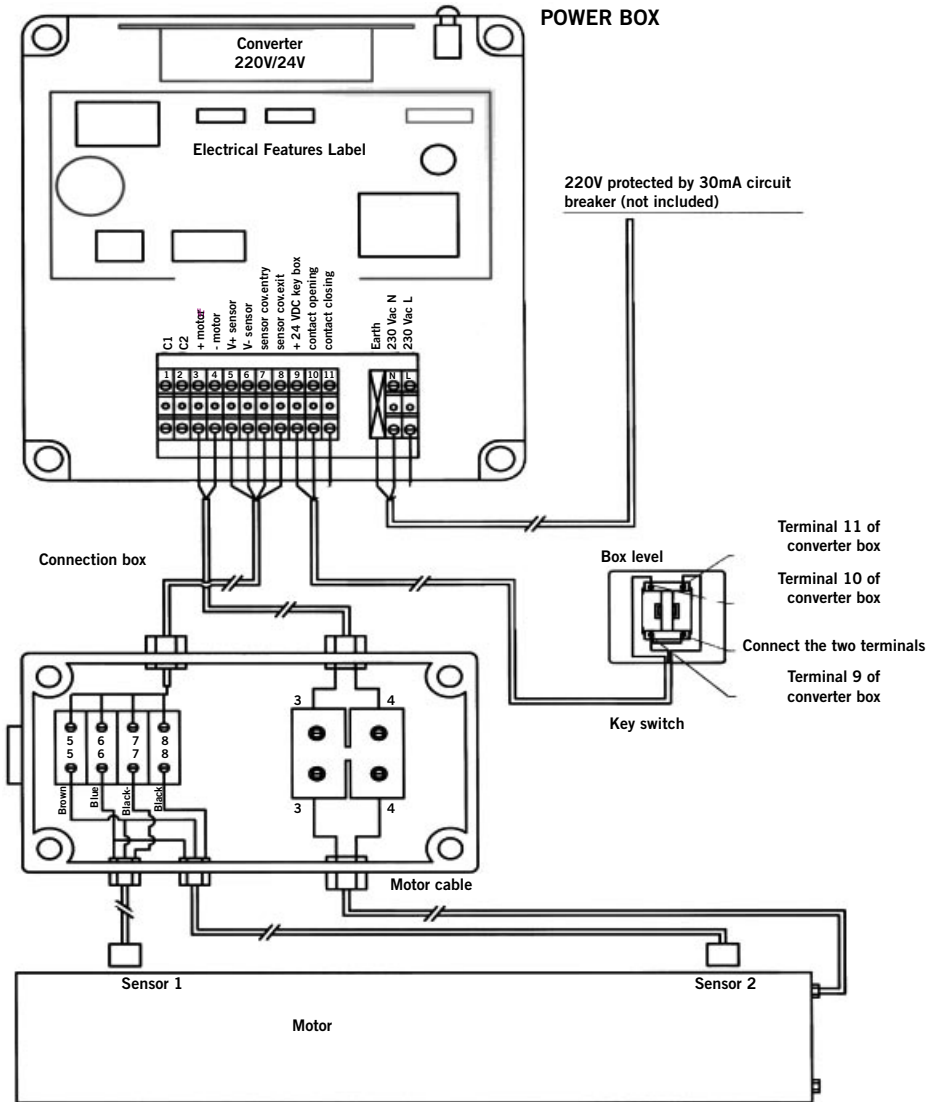
ELECTRICAL INSTALLATION

The electric installation must be done with total respect of the norms C15 100 and P91 C by a properly trained and qualified electrician.

Protect the 220 V power for the box with a 30 mA circuit breaker.



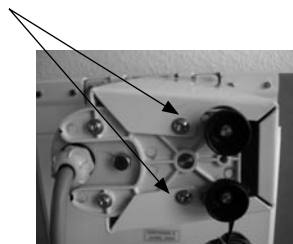
ELECTRICAL CONNECTIONS



PRELIMINARY LIMIT SWITCH ADJUSTMENTS



- To access to the limit switch device it is necessary to take out the protection cap.
- Remove the 2 fixing screws and slide the cap backwards.



- Limt switch sensor no. 1
- Limit switch mobile slider
- Limt switch sensor no. 2
- Limit switch adjustment rolls

After having made all the electrical connections, check the following points:

- Put the electrical box into voltage.
- Make sure that the direction of the roller displacement correspond to the position indicated by the key, otherwise overturn the two power cables of the motor (terminals 3 and 4 of the power box).

SIGNALIZATION OF COVER CLOSING AND COVER OPENING SENSORS

- Move the key switch to closing position and make sure that the mobile slider moves towards sensor no. 1 or sensor no. 2
- According to the direction of displacement and before the mobile slider reaches the sensor put a metal mass (blade or screwdriver for example), in front of the sensor. The motorized gear box must stop immediately.
- If that is not the case, move the key switch to stop position and overturn cables 7 and 8 of the electrical box.

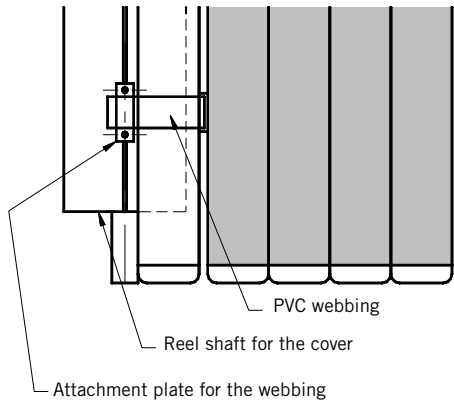
Closing:

- Drive the key switch to closing position.
- Wait for the automatic stop of the roller shaft when it gets closed.

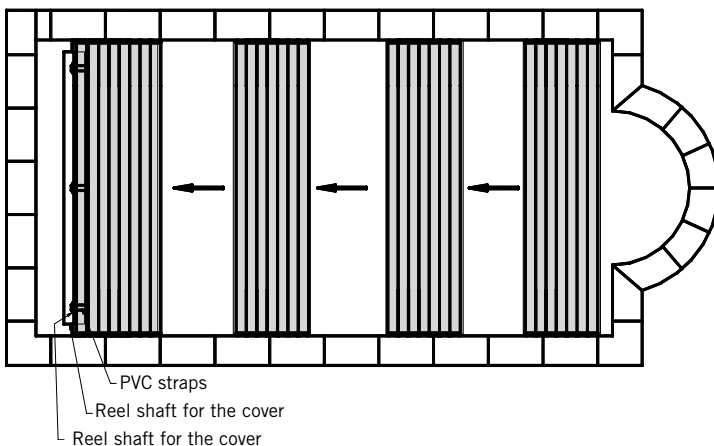
NOW YOU CAN PROCEED WITH THE SLAT ASSEMBLY

SLAT ASSEMBLY

- 1.- When removing the slats from the packing, place them immediately on the water of the pool to prevent any deformation due to soil movements.
- 2.- The number of slats in the automatic pool cover is determined according to the length of the pool, although four extra slats are also included.
- 3.- Place all the slats on the pool.
- 4.- The first set of slats is readily identifiable as it comes with straps for fastening it to the roller shaft.



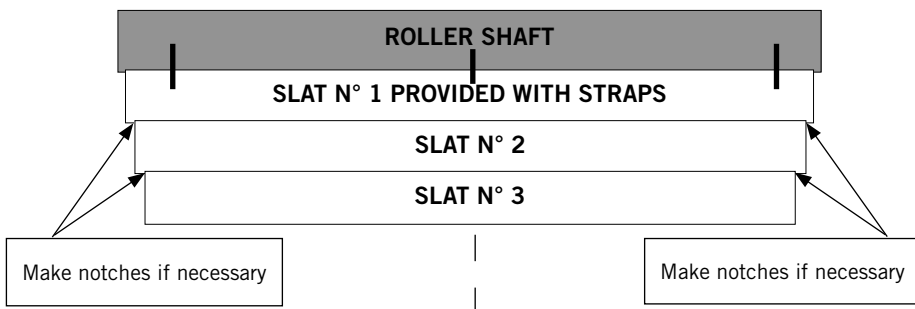
- 5.- Place the slats with the strap fasteners on the roller shaft.
- 6.- Slide the strap fasteners below the attachment plates.
- 7.- Bring the first slat as close as possible to the attachment plate.
- 8.- Centre the cover in the pool, leaving enough space on each side.
- 9.- Tighten the attachment plates.



SLAT ASSEMBLY FOR FREE-FORM POOL

In the case of a free-form pool cover, the slats are numbered.

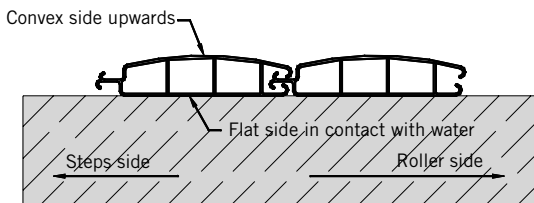
- 1.- When removing the slats from the packing, place them immediately on the pool water surface (see below), to prevent any deformation:



- 2.- The number of slats in the automatic pool cover was determined according to the length of the pool and according to the manufacturing date.
- 3.- Place the slats with strap fasteners on the roller shaft.
- 4.- Slide the strap fastener below the attachment plate.
- 5.- Bring the first slat as close as possible to the attachment plate.
- 6.- Centre the cover in the pool, leaving enough space on each side.
- 7.- Tighten the attachment plates.

SLAT DIRECTION

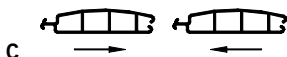
- 1.- Identify the upper surface (top) of the slats (curved surface).
- 2.- Identify the slat orientation:
 - Tongue toward the steps
 - Groove toward the reel shaft



- 3.- Assemble the slats, as indicated in the drawings, without shifting the slats with respect to each other (risk of plug damage).

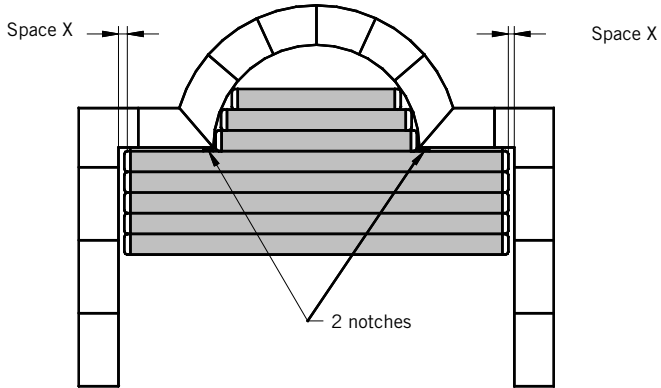
A Join the slats

B Join the tongue

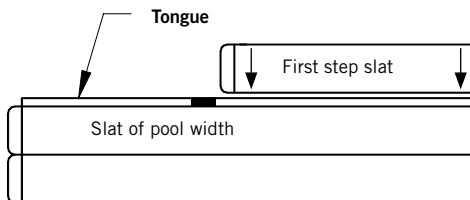


C -D: Move from top to bottom until completely adjusted

STAIR SLATS



- 1.- Place the step slats on the water.
- 2.- Assemble the slats until the cover for the steps is completely assembled.
- 3.- Make sure the pool slats are centred properly (with X play).
- 4.- Centre the step slats with respect to the pool slats

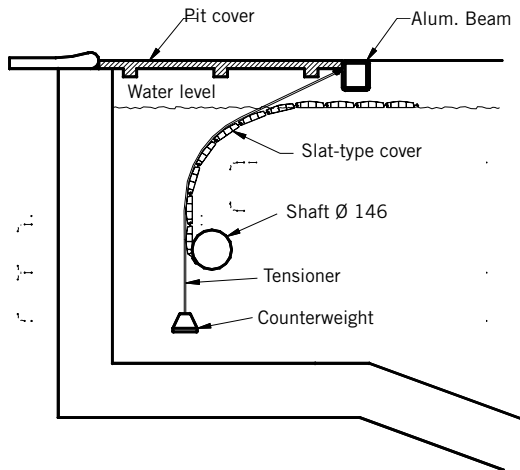
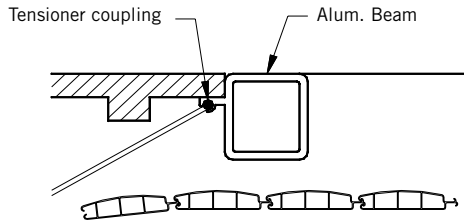


To connect step slats to pool slats, proceed as follows:

- 1.- Mark the positioning of the two plugs for the slat of the steps on the tongue or groove of the large adjacent slat (last slat for the pool).
- 2.- On this large slat, create two notches as wide as the plugs (approx. 1 cm) on the tongue; this will allow assembly between the last large slat for the pool and the first slat for the steps.

MOUNTING OF BEAM AND COUNTERWEIGHTS

- 1.- Place the two beam support brackets on the embedding parts for beam support, previously fixed, or directly on the wall, using screws.
- 2.- Slide the counterweights along the beam slot and place Aluminium beam on support bracket.
- 3.- Adjust the length of the counterweight when cover is completely unrolled over the pool surface. The counterweight should not touch the floor.
- 4.- Place pit cover as indicated in the diagram (Note: The beam section has been calculated to withstand pit cover only. Do not cover with concrete slabs)



PLACING THE LIFT PREVENTION BRACKETS WITH COPING STONE

Note: It may be necessary after this operation to fill the cut with cement or a similar product (tile joint for example)

1.



2.



3.



4.



5.



6.



7.



8.



9.



10.



PLACING THE LIFT PREVENTION BRACKETS WITHOUT COPING STONE

1.



2.



3.



4.



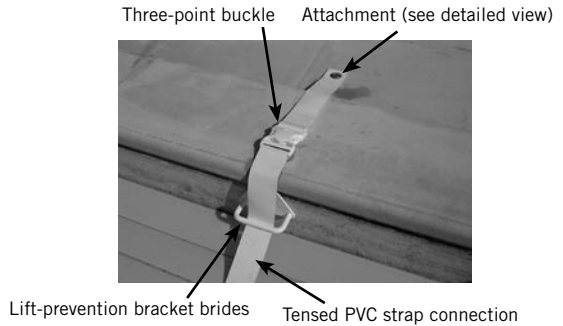
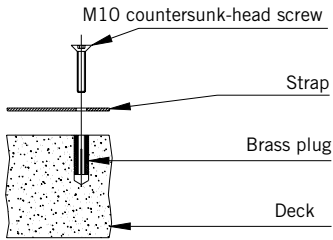
5.



6.

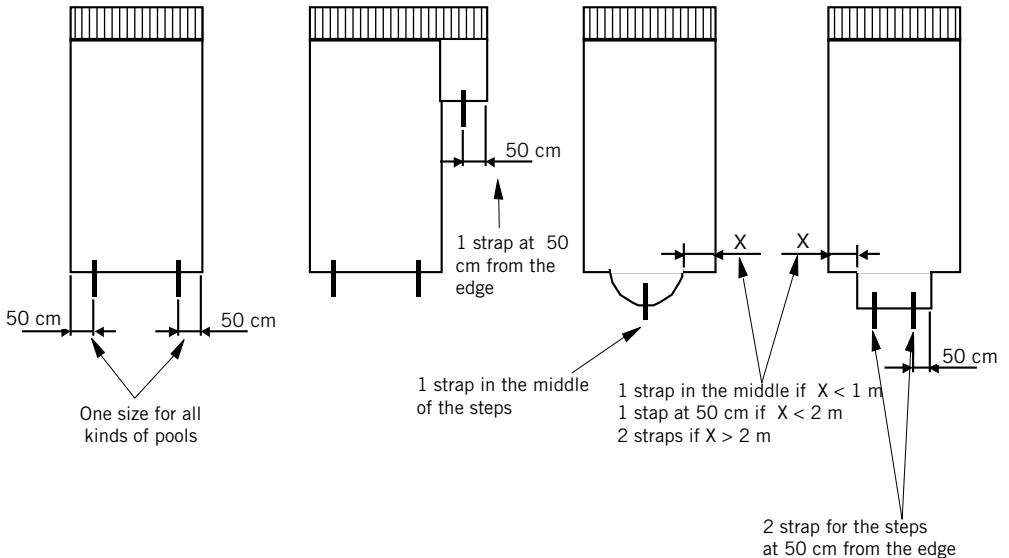


PLACING OF STRAP FASTENERS

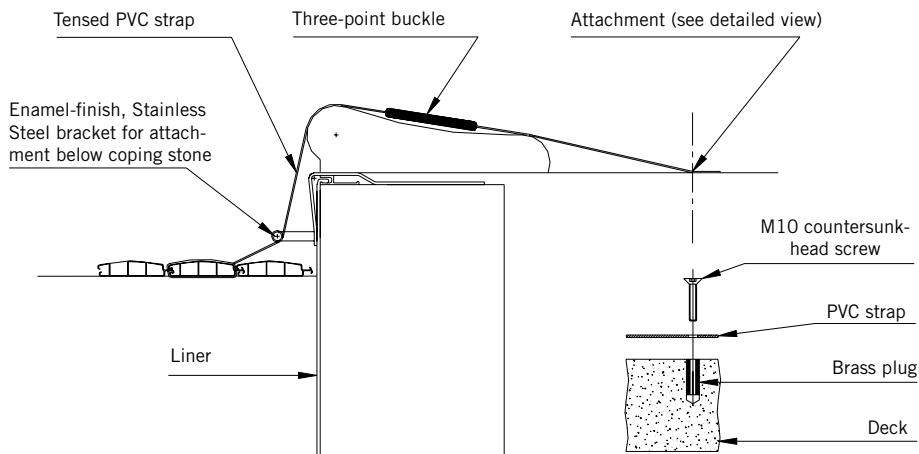


PLACING OF STRAP FASTENERS & LIFT BRACKETS

Width less than or equal to 3 m = 2 straps
 Width of 3 to 5 m = 3 straps
 Width of 5 to 7 m = 4 straps
 Width above 7 m = 5 straps



PLACING OF STRAP FASTENERS



USE OF IN-GROUND AUTOMATIC POOL COVER

READ CAREFULLY AND KEEP FOR FUTURE REFERENCE

Before performing any operation with the automatic pool cover, make sure there are no persons inside the pool and that there are no objects, such as a float or ball, that could hamper proper operation of the cover.

- 1.- Maintain correct water level in the pool before executing any opening or closing operations.
 - Level too high: risk of jamming at the beam level.
 - Level too low: risk of jamming at the wall or partition, over the steps, handle or outlet.
- 2.- If the pool has an automatic cleaner, check that the hose or power cord is not rolled up inside when the cover is opened.
- 3.- Make sure that no person holds the cover while it is being opened or closed.
- 4.- Check that the motor housing pit is dry, in order to prevent humidity problems in the motorised gear box.
- 5.- Clean the automatic pit cover several times annually using pressurised water. Prevent water stagnation and decomposing leaves on slats, as this can cause dark spots on PVC.
- 6.- Retract the automatic pool cover in the event of a hail storm. We recommend making insurance to cover up damages due to hail storm.
- 7.- The control switch key must always be removed, except when opening or closing the cover.
- 8.- Once the cover is unrolled, lock the fastening devices.
- 9.- Use of solar slats: the slats must remain in contact with the water at all times to prevent irreversible deformation.

TIPS FOR COVER WINTERISING

READ CAREFULLY AND KEEP FOR FUTURE REFERENCE

- 1.- Maintain a normal water level in the pool, draining any excess water caused by rain.
- 2.- Clean the motor pit with pressurised water cleaner.
- 3.- Leave the cover extended over the water surface.
- 4.- Carefully clean the trap box before winterising the pool.
- 5.- Place several floats in the trap box behind the cover and protect the skimmers with ice equalizers. To prevent leaves or other debris from clogging the mechanical trap, we recommend installing a mesh cover. Make sure the cover is cleaned regularly.
- 6.- Do NOT exert force on the slats when there is ice (risk of irreparable damage).
- 7.- Unplug the power cable to the electric box and dismantle the motorised gear box if there is any risk of flooding of the motor pit.

COVER INSTALLED WITH WALL OR PARTITION:

- Clean thoroughly with a suction pool cleaner before winterising.
- Clean the automatic pool cover with high-pressure cleaning equipment.
- Treat the water with a winterising product.
- Maintain a normal water level in the pool and secure the strap fasteners.
- Drain the pipes in the machine room.
- Seal the pipes of the skimmers, pool cleaner and supply nozzles.
- Seal the skimmers with suitable devices.
- Place ice breaker floats (00148) behind or in front of the weir flap.
- Unroll the automatic pool cover (rolled out over the water surface).
- Remove the control switch key and disconnect the power supply from the box.

AUTOMATIC POOL COVER MAINTENANCE

- Once assembly is completed, the user is responsible for full maintenance of the automatic pool cover.
- The slats of the automatic pool cover require periodic cleaning:
 - At least twice a year, or more frequently, in case of severe pollution or a high amount of lime in water.
 - Use a high-pressure cleaning device.
 - Pay particular attention to slat connections (lime scaling).
- If stubborn lime scale is present, use a suitable product. Do NOT use abrasive products or solvents that could damage the PVC slats. (Consult an authorised distributor).
- At the end of the bathing season, apply white spirit with a soft cloth to slats darkened by time to restore the gloss.
- The pool water must be checked frequently:
 - A - Chlorine less than or equal to 0.2 mg/litre (2 ppm)
 - B - pH between 7.2 and 7.4
 - C - Water temperature less than or equal to 30°C
 - D - If the pool is equipped with a salt electrolyser, keep the automatic cover open (rolled up) for at least 1 hour a day.
- The above indicated values are provided as a guideline. Consult an authorised distributor

MAINTENANCE INSTRUCTIONS

A) Slat inspection:

Regularly check that the slats fit together well and that there is no damage or sign of breakage, particularly where they join each other.

B) Fastener strap inspection:

- Check the straps every time the automatic cover is closed and locked, and every year after the winter season.

- Fastener strap conditions: Situation of fastener points at the coping stone and at the cover.

IMPORTANT: These safety devices must be replaced every 3 years.

C) After winterising, check that the overflow grills are correctly positioned and secure.

D) Make sure the control key switch is working properly. When the key is released, the winding/unwinding operation should stop automatically.

E) Use only original replacement parts, as they meet the manufacturer specifications.

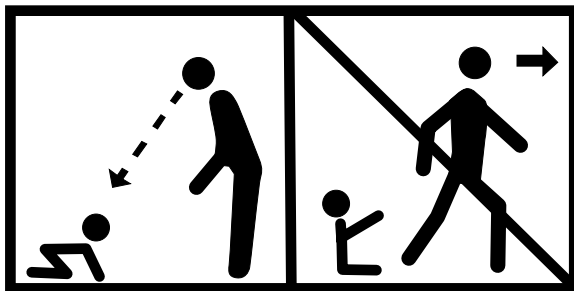
SAFETY TIPS

WARNING:

A swimming pool is a serious danger for children. They should never be left unattended.

A child can get drowned in a very short time.

The presence of children, even those who know to swim, in the vicinity of a pool requires constant adult supervision at all times.



For greater safety, the safety devices (cover fasteners) should be checked after the cover is closed and the control switch key should be removed.

WARNING:

The automatic pool cover may be opened and closed only by a responsible adult, who must also lock or unlock the devices holding the cover.

Make sure that no one is inside the pool during these operations and remove the control switch key immediately afterwards.

Rescue operations and First Aid courses should be attended.

Memorise First-Aid emergency phone numbers and place them where they can be seen easily near the pool.

SPECIFIC SAFETY TIPS FOR AUTOMATIC COVERS

The use of this cover is only an additional safety measure. Common sense, responsible attitude and constant supervision by parents, tutors or caretakers are still basic to child safety.

WARNING: This cover provides safety when properly closed and fastener devices are locked, and as long as the installation has been made in accordance with manufacturer's instructions.

- The cover must be routinely closed when no one is home, even if the absence is momentary.
- Make sure no person or foreign body is in the pool before and during close operations.
- Keep all tools needed to operate the cover out of the reach of children.
- The mechanism may be operate only by a responsible adult.
- Do not allow anyone to climb, step or jump on the automatic pool cover.
- In the even of a cover breakdown or malfunction, until the cover has been repaired every measure needed to prevent children from accessing the pool must be taken.

PURCHASE INFORMATION AND WARRANTIES

The use of this cover is only an additional safety measure. Common sense, a responsible attitude and constant supervision by parents, tutors or caretakers are basic to child safety.

Safety cover to prevent pool access to children under 5 years of age.

Pool size: up to a width 6 m

This product complies with French standard NF P90-308.

This product can be used during any season, as long as the pool water does not freeze.

Packing: Box width: 600 mm

Cover width	Box length	Box weight
4 m	4,50 m	350 Kg
5 m	5,50 m	450 Kg
6 m	6,60 m	500 Kg
7 m	7,60 m	550 Kg
8 m	8,60 m	600 Kg

At least two people and suitable mechanical equipment such as fork lift, must be available to unload the equipment.

The cover takes about 3 min to unroll itself (cover the pool) and about 2 min. 30 sec. to roll up (uncover the pool).

PURCHASE INFORMATION

WARRANTIES

- Purchase orders will be fulfilled in accordance with the diagrams and instructions provided by our customers on the manufacturing sheet.
- A three-year warranty is provided for slat floatability and watertightness
- The warranty does not cover dark stains or discoloration of the slats.
- The warranty does not cover damage caused by: hail, lightening storms, other natural disasters or weather phenomena and person or animal's falls in the pool.
- A three-year warranty is provided for the roller mechanical gear.
- The warranty does not cover damage caused by misuse of the cover or immersion of motors in dry pits during downpours.
- The warranty does not cover corrosion or deterioration caused by the use of an electrolyser or electro-physical unit.

Installer:

Serial number:



www.astralpool.com

Rev. 01 - 2005

WE RESERVE THE RIGHT TO CHANGE ALL OR PART OF THE FEATURES OF THE ARTICLES OR CONTENTS OF THIS DOCUMENT, WITHOUT PRIOR NOTICE.