

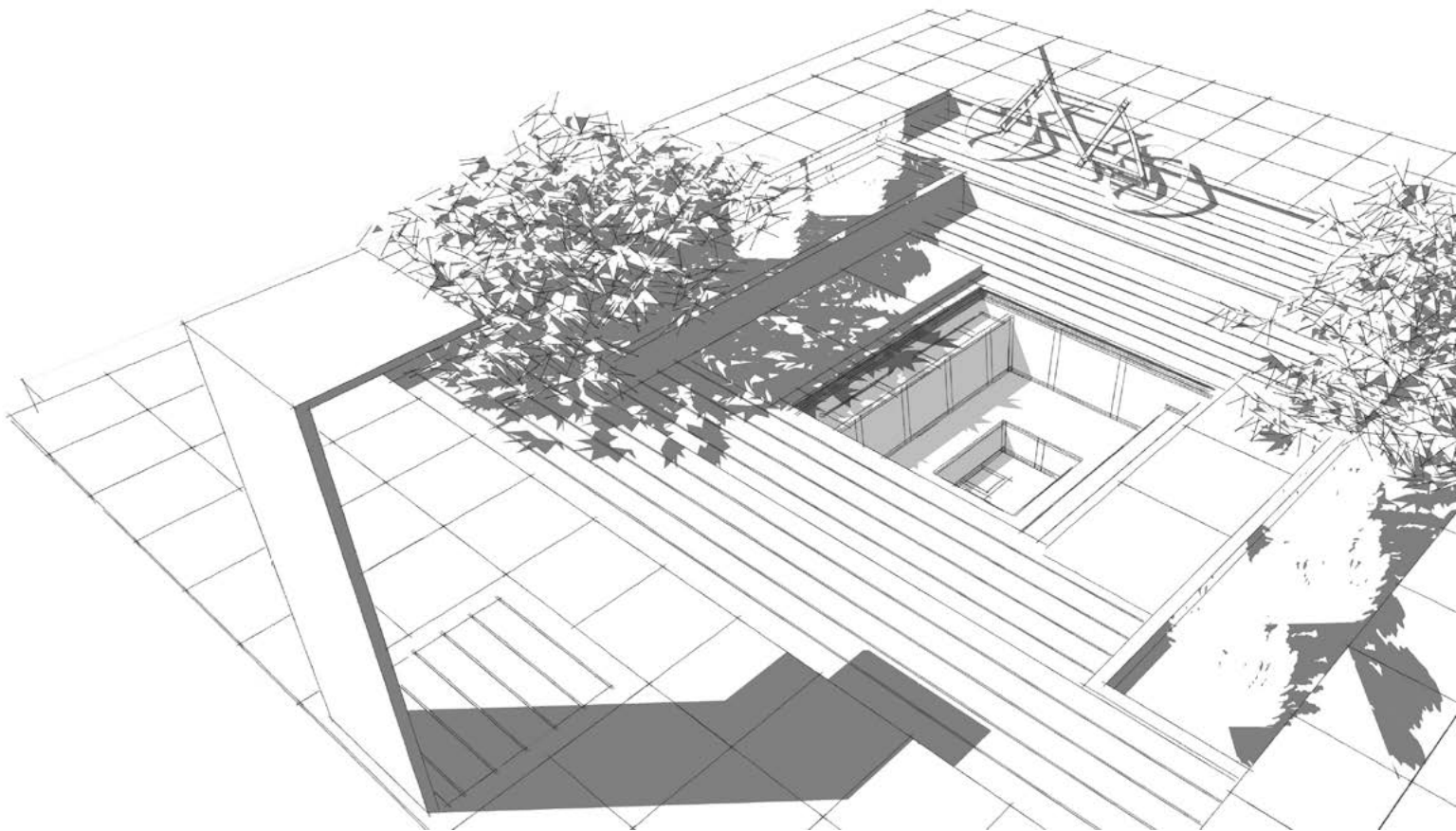
CSIDE P O O L S

CSIDE Classic

PRICES 2024 

Prices valid until revoked.
Selling prices in EUR incl. 25,0 % VAT.

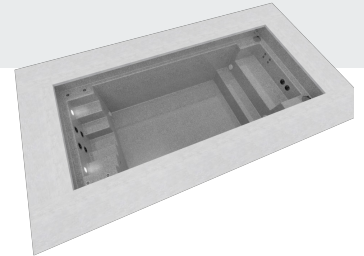
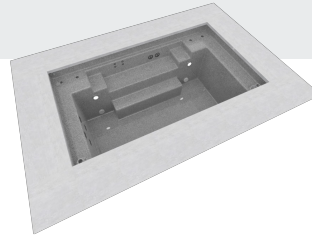
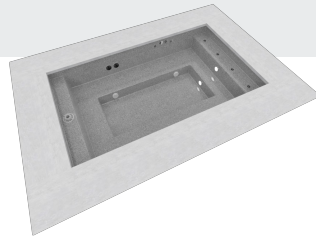
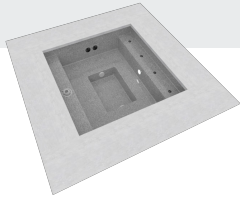
CSIDEPOOLS.EU



CSIDE Classic

Article included

- Equipment package
- Self-supporting construction



CSIDE 21 CLASSIC	CSIDE 37 CLASSIC	CSIDE 37L CLASSIC	CSIDE 47 CLASSIC
Dimensions inside: 2,10 x 2,10 x 0,80 m	Dimensions inside: 3,70 x 2,10 x 0,80 m	Dimensions inside: 3,70 x 2,10 x 1,27 m	Dimensions inside: 4,70 x 2,10 x 1,27 m
Outer dimensions LxWxD: 2,30 x 2,30 x 0,84 m	Outer dimensions LxWxD: 3,90 x 2,30 x 0,84 m	Outer dimensions LxWxD: 3,90 x 2,30 x 1,31 m	Outer dimensions LxWxD: 4,90 x 2,30 x 1,31 m
Capacity: 1,9 m3	Capacity: 3,7 m3	Capacity: 6,2 m3	Capacity: 8 m³
silver grey			
9.270 EUR CS210001124	11.087 EUR CS370001124	12.279 EUR CS37FL01124	14.270 EUR CS47FL01124
papyrus			
9.270 EUR CS210001108	11.087 EUR CS370001108	12.279 EUR CS37FL01108	14.270 EUR CS47FL01108
Granicite stone grey			
10.457 EUR CS210001122	12.542 EUR CS370001122	13.750 EUR CS37FL01122	15.830 EUR CS47FL01122
Mosaic tiled			
16.224 EUR CS210001130	20.000 EUR CS370001130	25.100 EUR CS37FL01130	30.194 EUR CS47FL01130

Accessories	CSIDE 21 CLASSIC	CSIDE 37 CLASSIC	CSIDE 37L CLASSIC	CSIDE 47 CLASSIC
Equipment package	-	-	-	-
4 x vertical inlets	593 EUR CS600004001	593 EUR CS600004001	593 EUR CS600004001	593 EUR CS600004001
Spa-Massage-Pak	2.358 EUR CS600007000	2.358 EUR CS600007000	2.358 EUR CS600007000	2.358 EUR CS600007000
Cascade "Maine"	2.684 EUR CS600003001	2.684 EUR CS600003001	2.684 EUR CS600003001	2.684 EUR CS600003001
Cascade "Cube"	3.550 EUR CS600003200	3.550 EUR CS600003200	3.550 EUR CS600003200	3.550 EUR CS600003200
Insulation	1.465 EUR CS210010000	1.891 EUR CS370010000	1.891 EUR CS37fl10000	2.862 EUR CS470010000
Self-supporting construction	-	-	3.293 EUR CS370020000	3.293 EUR CS370020000
Luftsprudelsystem	4.974 EUR CS600003500	4.974 EUR CS600003500	4.974 EUR CS600003500	4.974 EUR CS600003500
Luftsprudelplatte	4.160 EUR 3583020	4.160 EUR 3583020	4.160 EUR 3583020	4.160 EUR 3583020
Aqua Fun 4.0	-	-	5.725 EUR CS600003300	5.725 EUR CS600003300
Aqua Fun 4.0 als Healthstream angeordnet	-	-	5.725 EUR CS600003300-1	5.725 EUR CS600003300-1
Lighting	CSIDE 21 CLASSIC	CSIDE 37 CLASSIC	CSIDE 37L CLASSIC	CSIDE 47 CLASSIC
Additional underwater light LED warm white	893 EUR CS600005111	893 EUR CS600005111	893 EUR CS600005111	893 EUR CS600005111
Surcharge for 1x LED RGB light	956 EUR CS600006011	956 EUR CS600006011	956 EUR CS600006011	956 EUR CS600006011
Surcharge for 2 x LED RGB light	2.059 EUR CS600006111	2.059 EUR CS600006111	2.059 EUR CS600006111	2.059 EUR CS600006111

Technical equipment	CSIDE 21 CLASSIC	CSIDE 37 CLASSIC	CSIDE 37L CLASSIC	CSIDE 47 CLASSIC
Technical package for half-year use	1.765 EUR CS600002210	1.765 EUR CS600002210	1.765 EUR CS600002210	1.765 EUR CS600002210
Heat pump HKR 6 kW	1.865 EUR CS600010004	1.865 EUR CS600010004	1.865 EUR CS600010004	1.865 EUR CS600010004
Technical package with Spatouch-display	3.519 EUR CS600002225	3.519 EUR CS600002225	3.519 EUR CS600002225	3.519 EUR CS600002225
Terminal for Spatouch display	462 EUR CS600060020	462 EUR CS600060020	462 EUR CS600060020	462 EUR CS600060020
Technique shaft XL	1.943 EUR CS600002001	1.943 EUR CS600002001	1.943 EUR CS600002001	1.943 EUR CS600002001
Technique shaft XXL, incl. preparation for dosing system (dosing system not included)	2.679 EUR CS600002003	2.679 EUR CS600002003	2.679 EUR CS600002003	2.679 EUR CS600002003
Surcharge for electric heater 9 kW	1.155 EUR CS600008020	1.155 EUR CS600008020	1.155 EUR CS600008020	1.155 EUR CS600008020
Edelstahl Auf-/Unterputzdose für Touchdisplay	194 EUR CS600060030	194 EUR CS600060030	194 EUR CS600060030	194 EUR CS600060030
Pooldeck	CSIDE 21 CLASSIC	CSIDE 37 CLASSIC	CSIDE 37L CLASSIC	CSIDE 47 CLASSIC
CSide Pooldeck insulation	383 EUR CS210004120	588 EUR CS370004120	588 EUR CS370004120	693 EUR CS470004120
CSide pool deck drive	2.243 EUR CS210001500	2.243 EUR CS210001500	2.243 EUR CS210001500	2.243 EUR CS210001500
Surcharge for Pooldeck to be covered by stones (stones not included)	746 EUR CS210004130	1.197 EUR CS370004130	1.197 EUR CS370004130	1.507 EUR CS470004130
CSide Pooldeck (ohne Verkleidung)	6.654 EUR CS210004100	-	-	-

Covers	CSIDE 21 CLASSIC	CSIDE 37 CLASSIC	CSIDE 37L CLASSIC	CSIDE 47 CLASSIC
Roller cover	1.182 EUR CS210004021	1.350 EUR CS370004021	1.350 EUR CS370004021	1.633 EUR CS470004021
Insulating floating cover, 5 mm foam	672 EUR CS210006021G	1.035 EUR CS370006021G	1.035 EUR CS370006021G	1.182 EUR CS470006021
Winter debris cover	572 EUR CS210005021	888 EUR CS370005021	888 EUR CS370005021	993 EUR CS470005021
Roller shutter slats, PVC	924 EUR 01-0321202	1.434 EUR 01-0321203	1.434 EUR 01-0321203	1.780 EUR 01-0321204
Roller shutter slats, polycarbonate	1.838 EUR 01-0421202	3.036 EUR 01-0421203	3.036 EUR 01-0421203	3.587 EUR 01-0421204
Above ground electrical slatted cover	6.192 EUR CS600002400	6.192 EUR CS600002400	6.192 EUR CS600002400	6.192 EUR CS600002400
Aufpreis Oberflur-Sitzbankabdeckung	2.363 EUR CS600002410	2.363 EUR CS600002410	2.363 EUR CS600002410	2.363 EUR CS600002410
Hardtop cover	3.803 EUR CS210003206	4.154 EUR CS370003206	4.154 EUR CS370003206	4.680 EUR CS470003206

Coping	CSIDE 21 CLASSIC	CSIDE 37 CLASSIC	CSIDE 37L CLASSIC	CSIDE 47 CLASSIC
Coping stones granite, grey	2.925 EUR CS210040030	3.514 EUR CS370040030	3.514 EUR CS370040030	4.112 EUR CS470040030
Dekor-Fliesen für CSide 21 aus Ezarri Glasmosaik	1.040 EUR CS210001150	-	-	-
Dekor-Fliesen für CSide37 und CSide 37L	-	1.460 EUR CS370001150	1.460 EUR CS370001150	-
Dekor-Fliesen für CSide 47	-	-	-	1.712 EUR CS47FL01150

Other	CSIDE 21 CLASSIC	CSIDE 37 CLASSIC	CSIDE 37L CLASSIC	CSIDE 47 CLASSIC
Spare cartridge	79 EUR L817-3501	79 EUR L817-3501	79 EUR L817-3501	79 EUR L817-3501
Manual vacuum cleaner	231 EUR 7010003	231 EUR 7010003	231 EUR 7010003	231 EUR 7010003
Piping material	252 EUR CS600040010	252 EUR CS600040010	252 EUR CS600040010	252 EUR CS600040010
Suction fitting d130	221 EUR CS4205010	221 EUR CS4205010	221 EUR CS4205010	221 EUR CS4205010
Bottom outlet, elbow 90°	273 EUR 4205110	273 EUR 4205110	273 EUR 4205110	273 EUR 4205110
Inlet fitting 1 1/2"	310 EUR 3133121	310 EUR 3133121	310 EUR 3133121	310 EUR 3133121
surface care set	147 EUR 6451010	147 EUR 6451010	147 EUR 6451010	147 EUR 6451010
water care set HTH	263 EUR CS600030050	263 EUR CS600030050	263 EUR CS600030050	263 EUR CS600030050

Freight	CSIDE 21 CLASSIC	CSIDE 37 CLASSIC	CSIDE 37L CLASSIC	CSIDE 47 CLASSIC
Surcharge for fixed date (day) delivery	205 EUR CS920000140	205 EUR CS920000140	205 EUR CS920000140	205 EUR CS920000140
Surcharge for delivery by a curtainsider	205 EUR CS920000150	205 EUR CS920000150	205 EUR CS920000150	205 EUR CS920000150



Equipment package

incl. preinstalled equipment package consisting of

- 1 skimmer, incl. filter cartridge and skimmer basket
- 1 inlet jet 105, R 1 ½" 4 x 8 mm, V4A
- 1 winter plug for inlet jet 105 (delivered separately)
- 1 safety overflow fitting WP 133
- 1 underwater light LED warm white
- 1 transformer 100 VA and 1 deck box (delivered separately)

incl.



4 x vertical inlets

- installed in the entry area
- including 4 B141x winter plugs, 28/35 x 35 mm

593 EUR



Spa-Massage-Pak

- 2 x Turbojet-Slimline massage-nozzles for the lower back
- 4 x Microjet-Slimline massage-nozzles for neck and shoulders
- 2 x suction fittings, polished
- 1 x pneumatic switch with 5 m PN hose
- 1 x jet pump 230 V with PN switch box
(pump is delivered either loose or installed in the optional technical shaft)

Note: without PN switch in combination with technical package with Spa Touch display

2.358 EUR

Technical equipment required



Cascade "Maine"

Cascade "Mini V4A" consisting of:
 1 x stainless steel cascade Mini V4A
 1 x 1 jet pump 1,0 kW 230 V with PN switch box
 1 x pneumatic switch with 5 m PN hose
 2 x suction fittings
 (pump is delivered either lose or installed in the optional technique shaft)

Note: without PN switch in combination with technical package with Spa Touch display

2.684 EUR

Technical equipment required



Cascade "Cube"

V4A stainless steel cascade with push button in the pool

1 x cascade "Cube" (delivered separately)
 1 x pneumatic switch 107/1 V4A (mounted) with 10 m PN hose and 10 m protective hose (delivered separately)
 1 x jet pump with PN switch box
 2 x suction fittings with stainless steel cover (mounted)

Note: without PN switch in combination with technical package with Spa Touch display

3.550 EUR

Technical equipment required



Insulation

**Energy conservation through jointless thermal insulation | |
 Energy conservation through jointless thermal insulation**

sprayed PU foam insulation

CS 21 CSIDE 21 Classic
1.465 EUR

CS 37 CSIDE 37 Classic
1.891 EUR

CS37FL CSIDE 37L Classic
1.891 EUR

CS 47 CSIDE 47 Classic
2.862 EUR



Self-supporting construction

incl.



Luftsprudelsystem

mit Pneumatiktaster

CSIDE Luftsprudelsystem mit Sprudeldüsen in der Sitzbank für eine Whirlmassage.

Durch die starke Turbulenz werden feine Luftbläschen im Wasser und um den Körper verteilt, was zu einem milden Peelingeffekt führt. Die feinen Bläschen setzen sich auf der Haut fest, wodurch der Haut dringend benötigter Sauerstoff von außen zugeführt wird. Größere Sprudelblasen erzeugen eine Klopferschwingung, die sich ungehindert auf den Körper überträgt und so bis in die tiefsten Gewebeschichten wirkt. Dadurch wird die Durchblutung massiv gesteigert und bei regelmäßiger Nutzung Schlackenstoffe an alten Entzündungsherden eliminiert und Dellen und Wellen bei Cellulite gemindert.

Beinhaltet:

- 16 Düsen in 4 Reihen mit Edelstahlblenden
- Pneumatikschaltkasten (230V, 4-6A, bis 2kW)
- Gebläse (230V, 900W)

Achtung: Rohrschleife min. 30 cm über dem Wasserspiegel muss bauseits erstellt werden!

4.974 EUR



Luftsprudelplatte

im Beckenboden montiert

inklusive Seitenkanalgebläse (0,85 kW; 230 V) mit Gummimetallfüßen und EL-Zusatzgerät (230 V) mit Schütz bis 2 kW (6-10 A).

4.160 EUR



Aqua Fun 4.0

4-jet flow & massage system (second technique shaft required)

The four jet nozzles of the Aqua-Fun 4.0 bring a strong current into the water. Furthermore, individual body parts can be massaged selectively, consisting of:

- 4 Turbojet-Slimline massage-nozzles
- Jet pump 2,6 kW / 400V
- 1 pneumatic switch with 10 m PN hose
- PN switch box 400 V with contactor up to 2 kW (4 - 6A)
- 2 suction fittings polished

ATTENTION: The jet pump must always be installed below the water level. Please also note that you need an additional technique shaft for this pump.

5.725 EUR



Aqua Fun 4.0 als Healthstream angeordnet

Aqua Fun 4.0 Healthstream-Massagedüsen erlauben eine kraftvolle und gezielte Körpermassage im Pool. Vier Massagedüsen sind auf unterschiedlichen Höhen in der Beckenwand eingebaut für eine punktuelle Massage des Fuß- und Wadenbereichs, der Oberschenkel und des unteren Rückens.

5.725 EUR



Additional underwater light LED warm white

1 x underwater light LED warm white (HT), transformer 100 VA and second deck box (KU)

893 EUR



Surcharge for 1x LED RGB light

Coloured LED light

1 x underwater light LED RGB (HT) with DMX control box and remote control

956 EUR



Surcharge for 2 x LED RGB light

Coloured LED light

2 x underwater light LED RGB (HT) with DMX control box and remote control and second deck box (KU)

2.059 EUR



Technical package for half-year use

Technical equipment with filter pump and bypass for a heat pump

This technical package can be used from spring to autumn. The pool is heated by an optional heat pump. When the outside temperature is above 10°C, the water can be heated up to 28°C. The distance between pool and equipment should not exceed 5 m. Technical package can also be installed above water level.

Technical equipment mounted on a pallet consisting of:

- Self-priming filter pump 0.75 kW-230 V
- Check valve for filter pump
- Bypass for an optional heat pump
- Filter pump control mounted on inspection platform
- Connected load: 1 x 16 Ampere - 230 V
- Size 120 cm x 80 cm (length x width)

1.765 EUR



Heat pump HKR 6 kW

For the heating of your C-SIDE

Dimensions: 790 x 330 x 580 mm

Weight: approx. 36 kg

Hydraulic connection adhesive screw connection d 50

Performance data:

Heat output A 15°/W 26°= 4,25kW

Heating capacity A 26°/W 26° = 6 kW

Cooling capacity approx. 4kW

Power consumption approx. 1.04 kW

Current consumption nominal 5A, fuse 16A C (slow blow)

Water flow rate > 2,3m³

Pressure loss heat exchanger kPa=2,4

Volume level in 10/1 mtr. approx. 38/50 dB(A)

Functionality starting at an outdoor temperature of 10 degrees.

1.865 EUR

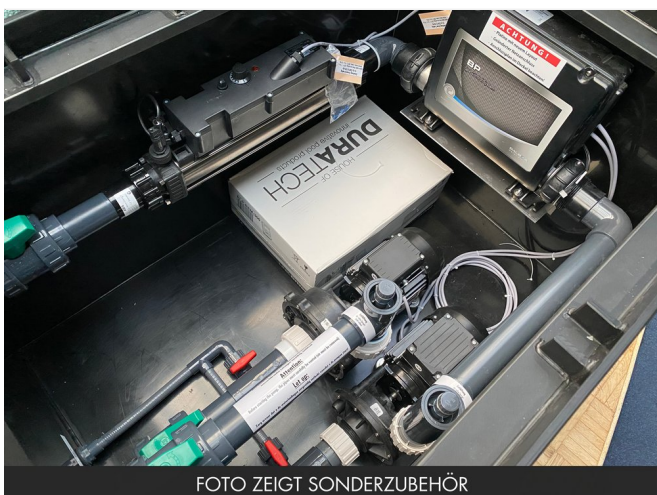


FOTO ZEIGT SONDERZUBEHÖR

Technical package with Spatouch-display

with frost protection, suitable for winter use

Technical equipment designed for automatic year-round use. The pool is heated by the electric heater. The distance between pool and equipment should not exceed 5 m.

Technical equipment mounted on a pallet consisting of:

- Self-priming filter pump 0.75 kW-230 V
- Pool-Control with Spatouch-display and temperature control and remote control (Spa touch-display and IR-receiver are delivered separately)
- electric heaters 230 V, 1 x 3 kW / 1 x 2 kW
- connected load: 2 x 16 Ampere

Note:

max. water temperature: 32°C for colours papyrus, silver grey and granicite stonegrey

max. water temperature: 38°C for mosaic tiled pools

3.519 EUR



Terminal for Spatouch display

stainless steel, ground surface

height: 1.000 mm

462 EUR

Technical package with Spatouch-display required



Technique shaft XL

incl. cover 1064 x 726 x 650 mm

Technique shaft XL

incl. cover 1064 x 726 x 650 mm

technical package, installed in technique shaft, consisting of:

- technique shaft XL

incl. inspection platform, shaft drain and cable bushing

(article only available in connection with a technical package)

Note:

Technique shafts must ALWAYS be installed below water level.

Please note that the technology mounted in the shaft ALWAYS needs to be installed below the water level.

1.943 EUR

Technical equipment required



Technique shaft XXL, incl. preparation for dosing system (dosing system not included)

incl. cover (1600 x 900 x 670 mm)

technical package, installed in technique shaft, consisting of:

- technique shaft XXL incl. inspection platform, shaft drain and cable bushing

(article only available in connection with a technical package)

Note:

Technique shafts must ALWAYS be installed below water level.

2.679 EUR



Surcharge for electric heater 9 kW

total capacity: 3 kW + 9 kW

Upgrade for the technical package with Spatouch-display with a stronger electric heater, that allows to heat up the water more quickly.

Preinstalled on the technical package

Connected load: 1 x 16 Ampere - 230 V, 1 x 16 Ampere - 400 V
An insulating pool cover is required to heat up the pool efficiently.

1.155 EUR

Technical package with Spatouch-display required



Edelstahl Auf-/Unterputzdose für Touchdisplay

(Bediendisplay) aus Edelstahl V2A, t=1,5mm,
230x170x50mm, mit zwei Aussparungen (Sensor und
Bedienfeld vorne), Ecken verschweißt und verschliffen.

194 EUR



CSide Pooldeck insulation

XPS insulation panels, incl. fixing brackets

for CS21 CSIDE 21 Classic
383 EUR

for CS37/37L CSIDE 37 Classic
588 EUR

for CS37/37L CSIDE 37L Classic
588 EUR

for CS47 CSIDE 47 Classic
693 EUR



CSide pool deck drive

With remote control

2.243 EUR



Surcharge for Pooldeck to be covered by stones (stones not included)

for CS21 CSIDE 21 Classic
746 EUR

for CS37/37L CSIDE 37 Classic
1.197 EUR

for CS37/37L CSIDE 37L Classic
1.197 EUR

for CS47 CSIDE 47 Classic
1.507 EUR



CSide Pooldeck (ohne Verkleidung)

Bestehend aus:

Komplett Alusystem inkl. Entwässerungsebene, Edelstahlrolle mit doppeltem Kugellager, begehbare Laufschiene zum auflegen oder einfräsen, Abschlusswinkel mit Bürstendichtung, Steckverbinder und Montagematerial Montage bauseits, Montagematerial wird mitgeliefert. Lieferung mit dem Becken.

Pooldeck in zwei Öffnungsvarianten verfügbar: Horizontal und Vertikal

6.654 EUR



Roller cover

Safety cover with roll-up gear

- incl. hand crank and drive pin.
- colour: grey (RAL 7037)

dimensions: 250 x 250 cm

CSIDE 21 Classic

1.182 EUR

dimensions: 400 x 250 cm

CSIDE 37 Classic

1.350 EUR

dimensions: 400 x 250 cm

CSIDE 37L Classic

1.350 EUR

· Size: 500 x 250 cm

CSIDE 47 Classic

1.633 EUR



Insulating floating cover, 5 mm foam

colour: grey

rectangular

dimensions: 205 x 205 cm

CSIDE 21 Classic

number of folding elements: 4

672 EUR

dimensions: 365 x 205 cm

CSIDE 37 Classic

number of folding elements: 4

1.035 EUR

dimensions: 365 x 205 cm

CSIDE 37L Classic

number of folding elements: 4

1.035 EUR

dimensions: 465 x 205 cm

CSIDE 47 Classic

number of folding elements: 5

1.182 EUR



Winter debris cover

Woven net to protect against foliage and coarse contaminants

Material: Polyester fabric

The cover protects against coarse impurities

Mounting instructions:

The cover is supplied with a double stitched wraparound. Eyelets are inserted at the edge at a distance of 50cm. The net cover is secured in retractable stainless steel floor anchors by means of elastic bands.

for CS 21, 2,50 x 2,50 Mtr.

CSIDE 21 Classic

572 EUR

for CS 37

CSIDE 37 Classic

888 EUR

for CS 37

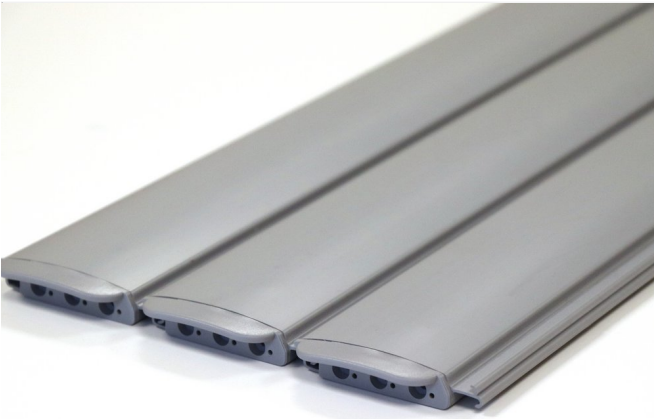
CSIDE 37L Classic

888 EUR

for CS 47

CSIDE 47 Classic

993 EUR



Roller shutter slats, PVC

PVC grey

for being used with the Poolbox

924 EUR

CSIDE 21 Classic

1.434 EUR

CSIDE 37 Classic

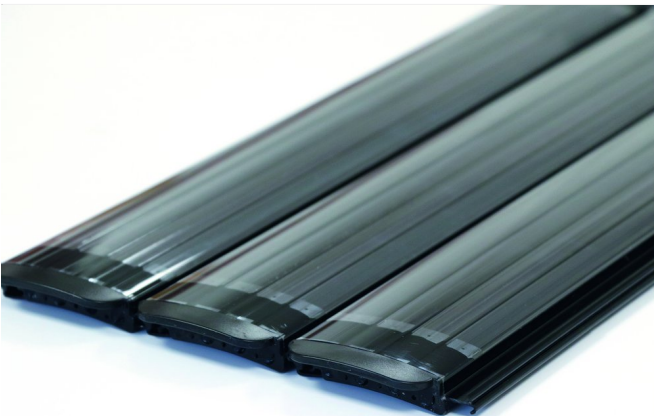
1.434 EUR

CSIDE 37L Classic

1.780 EUR

CSIDE 47 Classic

Above ground electrical slatted cover
required



Roller shutter slats, polycarbonate

polycarbonate solar version

for being used with the Poolbox

1.838 EUR

CSIDE 21 Classic

3.036 EUR

CSIDE 37 Classic

3.036 EUR

CSIDE 37L Classic

3.587 EUR

CSIDE 47 Classic

Above ground electrical slatted cover
required



Above ground electrical slatted cover

anthracite

Above ground electrical slatted cover, incl. sitch box ad key switch.
Slats not included

6.192 EUR



Aufpreis Oberflur-Sitzbankabdeckung

anthracite

Nur in Verbindung mit CSide Oberflurabdeckung

Nicht nachträglich erhältlich

2.363 EUR

**Above ground electrical slatted cover
required**



Hardtop cover

light grey

4 parts,made of RivieraTex, RivieraTex is a 100% dyed polyester fabric, PU-coated, water-repellent, incl. protective cover against pollution and rain

4 parts,made of RivieraTex
3.803 EUR

CSIDE 21 Classic

4 parts,made of RivieraTex, anthracite
3.803 EUR

4 parts,made of RivieraTex, light grey
3.803 EUR

5 parts,made of RivieraTex, RivieraTex is a 100% dyed polyester fabric, PU-coated, water-repellent
4.154 EUR

CSIDE 37 Classic

5 parts,made of RivieraTex, RivieraTex is a 100% dyed polyester fabric, PU-coated, water-repellent, anthracite
4.154 EUR

5 parts,made of RivieraTex, RivieraTex is a 100% dyed polyester fabric, PU-coated, water-repellent, light grey
4.154 EUR

5 parts,made of RivieraTex, RivieraTex is a 100% dyed polyester fabric, PU-coated, water-repellent
4.154 EUR

CSIDE 37L Classic

5 parts,made of RivieraTex, RivieraTex is a 100% dyed polyester fabric, PU-coated, water-repellent, anthracite
4.154 EUR

5 parts,made of RivieraTex, RivieraTex is a 100% dyed polyester fabric, PU-coated, water-repellent, light grey
4.154 EUR

6 parts,made of RivieraTex, RivieraTex is a 100% dyed polyester fabric, PU-coated, water-repellent
4.680 EUR

CSIDE 47 Classic

6 parts,made of RivieraTex, RivieraTex is a 100% dyed polyester fabric, PU-coated, water-repellent, anthracite
4.680 EUR

6 parts,made of RivieraTex, RivieraTex is a 100% dyed polyester fabric, PU-coated, water-repellent, light grey
4.680 EUR



Coping stones granite, grey

for CS 21 | for CS 37 | for CS 37L

Coping stones with overhanging nose
Dimensions: 60x60x6/3, mottled surface

for CS 21
2.925 EUR

CSIDE 21 Classic

for CS 37
3.514 EUR

CSIDE 37 Classic

for CS 37L
3.514 EUR

CSIDE 37L Classic

for CS 47
4.112 EUR

CSIDE 47 Classic



Dekor-Fliesen für CSide 21 aus Ezarri Glasmosaik

werkseitig angebracht und verfugt

Oberhalb der Rollladenauflegekante, Höhe: 21 cm

1.040 EUR



Dekor-Fliesen für CSide37 und CSide 37L

aus Ezarri Glasmosaik, werkseitig angebracht und verfugt.

Oberhalb der Rollladenauflegekante, Höhe: 21 cm

1.460 EUR



Dekor-Fliesen für CSide 47

Glasmosaik, werkseitig angebracht und verfugt

Oberhalb der Rollladenauflegekante, Höhe: 21 cm

1.712 EUR



Spare cartridge

Spare cartridge for cartridge filter

79 EUR



Manual vacuum cleaner

PVC blue

Remove the dirt from your CSIDE with light manual pumping movements. With removable, very fine filter, which can be easily rinsed out.

Total length: 148 cm

Colour: PVC-blue

Suction width: 8 cm

231 EUR



Piping material

for connecting the pool and technical shaft or heat pump

25m flexible hose, 50 mm

4 x reduction, 90°, 50 f/m

4 x elbow, 90° 2 x socket, 50 x 50 f/m

1 x Tangit cleaner 125 ml

1 x Griffon PVC glue WDF-05

252 EUR



Suction fitting d130

(only needed additionally if you want to connect a sand filter)

- straight wall duct
- polished stainless steel
- hair safe according to DIN 13451
- Qmax = 8.1 m³/h

221 EUR



Bottom outlet, elbow 90°

(only required if you want to empty the basin complete!)

- Red brass 1 1/2" f

273 EUR



Inlet fitting 1 1/2"

red brass wth plastic face plate, black or white

310 EUR



surface care set

For the ideal treatment of the pool surface

Consisting of:

- 1 each of Pool Finish, Gel Edge Cleaner, Antigilb, stainless steel polish, gloves, microfibre cloth polishing cloth, polishing set, sponge, care instructions for swimming pools (Technical Info SB 9)
- 4 x each 1000-, 2000-grit wet sandpaper and 800-grit sandpaper

147 EUR



water care set HTH

consisting of:

- 1 x Lovibond pool tester
- 1 x HTH pH-Plus 5 kg
- 1 x HTH Briquettes 7 g, 2.5 kg inorganic UN-1748, Calcium hypochlorite, mixture, dry, 5.1, III, (E),
- 1 x HTH - pH Minus 5 kg
- 1 x HTH - Alkanal 5 kg
- 1 x Chlorine doser "Swim"

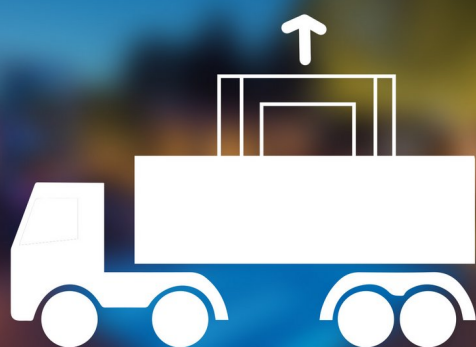
263 EUR



Surcharge for fixed date (day) delivery

Delivery to the dealer

205 EUR



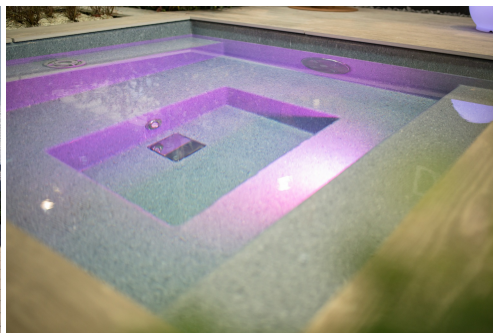
Surcharge for delivery by a curtailer

crane unloading on site

Forwarding truck is to be opened at the top. This allows a crane to lift the pool out of the truck.

205 EUR

C-SIDE REFERENCES



YOUR C-SIDE DEALER

CSIDE
POOLS

Partner Line

Geithus Næringspark, Gravfossveien 1
3360 Geithus
+4791651309
roy.paulsen@partnerline.no