

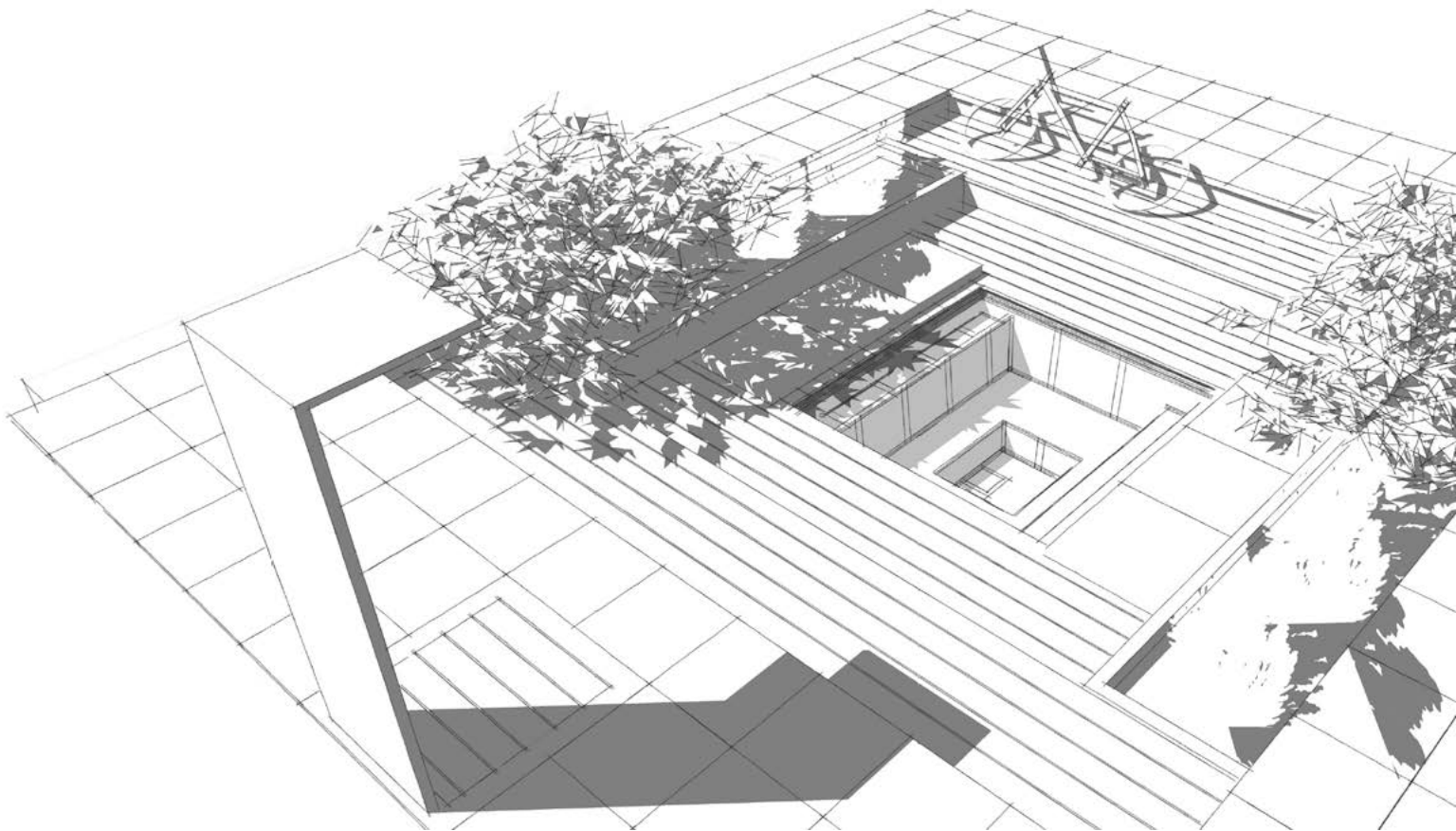
CSIDE POOLS

CSIDE Easy

PRICES 2024 

Prices valid until revoked.
Selling prices in EUR incl. 25,0 % VAT.

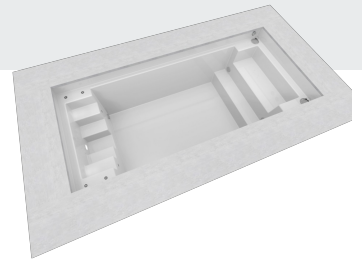
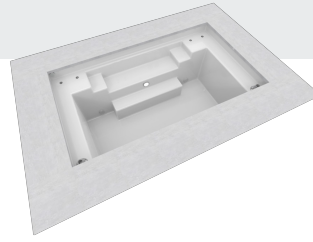
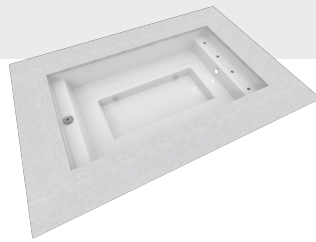
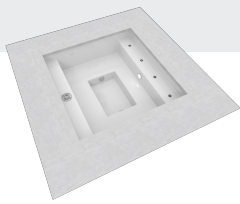
CSIDEPOOLS.EU



CSIDE Easy

Article included

- Technical package for half-year use
- 4 x vertical inlets
- Piping material
- Spare cartridge
- Equipment package



CSIDE 21 EASY	CSIDE 37 EASY	CSIDE 37L EASY	CSIDE 47 EASY
Dimensions inside: 2,10 x 2,10 x 0,80 m	Dimensions inside: 3,70 x 2,10 x 0,80 m	Dimensions inside: 3,70 x 2,10 x 1,27 m	Dimensions inside: 4,70 x 2,10 x 1,27 m
Capacity: 1,9 m³	Capacity: 3,7 m³	Capacity: 6,2 m³	Capacity: 8 m³
papyrus			
10.809 EUR CS210002208	11.859 EUR CS370002208	14.590 EUR CS37FL02208	16.691 EUR CS47FL02208
silver grey			
10.809 EUR CS210002224	11.859 EUR CS370002224	14.590 EUR CS37FL02224	16.691 EUR CS47FL02224

Covers	CSIDE 21 EASY	CSIDE 37 EASY	CSIDE 37L EASY	CSIDE 47 EASY
Roller cover	1.182 EUR CS210004021	1.350 EUR CS370004021	1.350 EUR CS370004021	1.633 EUR CS470004021
Winter debris cover	572 EUR CS210005021	888 EUR CS370005021	888 EUR CS370005021	993 EUR CS470005021
Insulating floating cover, 5 mm foam	672 EUR CS210006021G	1.035 EUR CS370006021G	1.035 EUR CS370006021G	1.182 EUR CS470006021
Roller shutter slats, PVC	924 EUR 01-0321202	1.434 EUR 01-0321203	1.434 EUR 01-0321203	1.780 EUR 01-0321204
Roller shutter slats, polycarbonate	1.838 EUR 01-0421202	3.036 EUR 01-0421203	3.036 EUR 01-0421203	3.587 EUR 01-0421204
Above ground electrical slatted cover	6.192 EUR CS600002400	6.192 EUR CS600002400	6.192 EUR CS600002400	6.192 EUR CS600002400
Aufpreis Oberflur-Sitzbankabdeckung	2.363 EUR CS600002410	2.363 EUR CS600002410	2.363 EUR CS600002410	2.363 EUR CS600002410
Hardtop cover	3.803 EUR CS210003206	4.154 EUR CS370003209	4.154 EUR CS370003206	4.680 EUR CS470003206
Pooldeck	CSIDE 21 EASY	CSIDE 37 EASY	CSIDE 37L EASY	CSIDE 47 EASY
CSide pool deck drive	2.243 EUR CS210001500	2.243 EUR CS210001500	2.243 EUR CS210001500	2.243 EUR CS210001500
CSide Pooldeck insulation	383 EUR CS210004120	588 EUR CS370004120	588 EUR CS370004120	693 EUR CS470004120
Surcharge for Pooldeck to be covered by stones (stones not included)	746 EUR CS210004130	1.197 EUR CS370004130	1.197 EUR CS370004130	1.507 EUR CS470004130
CSide Pooldeck (ohne Verkleidung)	6.654 EUR CS210004100	-	-	-
Coping	CSIDE 21 EASY	CSIDE 37 EASY	CSIDE 37L EASY	CSIDE 47 EASY
Coping stones granite, grey	2.925 EUR CS210040030	3.514 EUR CS370040030	3.514 EUR CS370040030	4.112 EUR CS470040030
Accessories	CSIDE 21 EASY	CSIDE 37 EASY	CSIDE 37L EASY	CSIDE 47 EASY
Insulation	1.465 EUR CS210010000	1.891 EUR CS370010000	1.891 EUR CS370010000	2.862 EUR CS470010000
4 x vertical inlets	-	-	-	-
Equipment package	-	-	-	-
Technical equipment	CSIDE 21 EASY	CSIDE 37 EASY	CSIDE 37L EASY	CSIDE 47 EASY
Heat pump HKR 6 kW	1.865 EUR CS600010004	1.865 EUR CS600010004	1.865 EUR CS600010004	1.865 EUR CS600010004
Technical package for half-year use	-	-	-	-

Freight	CSIDE 21 EASY	CSIDE 37 EASY	CSIDE 37L EASY	CSIDE 47 EASY
Surcharge for fixed date (day) delivery	205 EUR CS920000140	205 EUR CS920000140	205 EUR CS920000140	205 EUR CS920000140
Surcharge for delivery by a curtainsider	205 EUR CS920000150	205 EUR CS920000150	205 EUR CS920000150	205 EUR CS920000150
Other	CSIDE 21 EASY	CSIDE 37 EASY	CSIDE 37L EASY	CSIDE 47 EASY
Piping material	-	-	-	-
Spare cartridge	-	-	-	-
Manual vacuum cleaner	231 EUR 7010003	231 EUR 7010003	231 EUR 7010003	231 EUR 7010003
surface care set	147 EUR 6451010	147 EUR 6451010	147 EUR 6451010	147 EUR 6451010
water care set HTH	263 EUR CS600030050	263 EUR CS600030050	263 EUR CS600030050	263 EUR CS600030050



Roller cover

Safety cover with roll-up gear

- incl. hand crank and drive pin.
- colour: grey (RAL 7037)

dimensions: 250 x 250 cm

1.182 EUR

CSIDE 21 easy

dimensions: 400 x 250 cm

1.350 EUR

CSIDE 37 easy

dimensions: 400 x 250 cm

1.350 EUR

CSIDE 37L easy

· Size: 500 x 250 cm

1.633 EUR

CSIDE 47 easy



Winter debris cover

Woven net to protect against foliage and coarse contaminants

Material: Polyester fabric

The cover protects against coarse impurities

Mounting instructions:

The cover is supplied with a double stitched wraparound. Eyelets are inserted at the edge at a distance of 50cm. The net cover is secured in retractable stainless steel floor anchors by means of elastic bands.

for CS 21, 2,50 x 2,50 Mtr.

572 EUR

CSIDE 21 easy

for CS 37

888 EUR

CSIDE 37 easy

for CS 37

888 EUR

CSIDE 37L easy

for CS 47

993 EUR

CSIDE 47 easy



Insulating floating cover, 5 mm foam

colour: grey

rectangular

dimensions: 205 x 205 cm
number of folding elements: 4
672 EUR

CSIDE 21 easy

dimensions: 365 x 205 cm
number of folding elements: 4
1.035 EUR

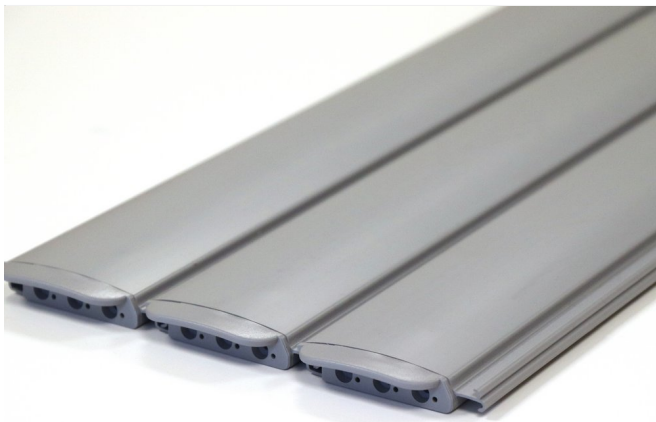
CSIDE 37 easy

dimensions: 365 x 205 cm
number of folding elements: 5
1.035 EUR

CSIDE 37L easy

dimensions: 465 x 205 cm
number of folding elements: 5
1.182 EUR

CSIDE 47 easy



Roller shutter slats, PVC

PVC grey

for being used with the Poolbox

924 EUR

CSIDE 21 easy

1.434 EUR

CSIDE 37 easy

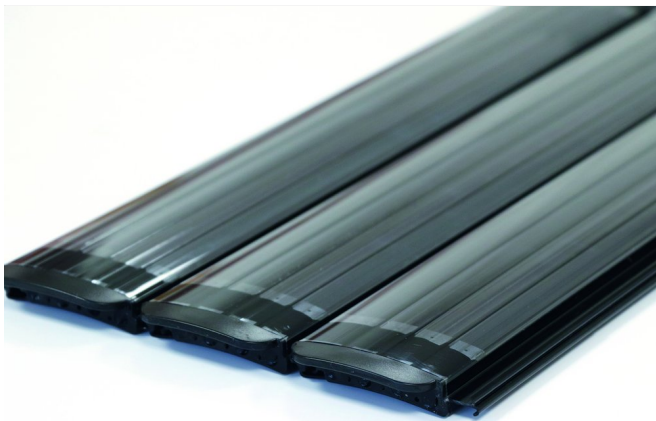
1.434 EUR

CSIDE 37L easy

1.780 EUR

CSIDE 47 easy

Above ground electrical slatted cover
required



Roller shutter slats, polycarbonate

polycarbonate solar version

for being used with the Poolbox

1.838 EUR

CSIDE 21 easy

3.036 EUR

CSIDE 37 easy

3.036 EUR

CSIDE 37L easy

3.587 EUR

CSIDE 47 easy

Above ground electrical slatted cover
required



Above ground electrical slatted cover

anthracite

Above ground electrical slatted cover, incl. sitch box ad key switch.
Slats not included

6.192 EUR



Aufpreis Oberflur-Sitzbankabdeckung

anthracite

Nur in Verbindung mit CSide Oberflurabdeckung

Nicht nachträglich erhältlich

2.363 EUR

Above ground electrical slatted cover required
--



Hardtop cover

light grey | beige-grau | light grey | light grey

4 parts, made of RivieraTex, RivieraTex is a 100% dyed polyester fabric, PU-coated, water-repellent, incl. protective cover against pollution and rain

4 parts, made of RivieraTex
3.803 EUR

CSIDE 21 easy

4 parts, made of RivieraTex, anthracite
3.803 EUR

4 parts, made of RivieraTex, light grey
3.803 EUR

5 parts, made of RivieraTex, RivieraTex is a 100% dyed polyester fabric, PU-coated, water-repellent, anthracite
4.154 EUR

CSIDE 37 easy

5 parts, made of RivieraTex, RivieraTex is a 100% dyed polyester fabric, PU-coated, water-repellent, light grey
4.154 EUR

5 parts, made of RivieraTex, RivieraTex is a 100% dyed polyester fabric, PU-coated, water-repellent
4.154 EUR

5 parts, made of RivieraTex, RivieraTex is a 100% dyed polyester fabric, PU-coated, water-repellent
4.154 EUR

CSIDE 37L easy

5 parts, made of RivieraTex, RivieraTex is a 100% dyed polyester fabric, PU-coated, water-repellent, anthracite
4.154 EUR

5 parts, made of RivieraTex, RivieraTex is a 100% dyed polyester fabric, PU-coated, water-repellent, light grey
4.154 EUR

6 parts, made of RivieraTex, RivieraTex is a 100% dyed polyester fabric, PU-coated, water-repellent
4.680 EUR

CSIDE 47 easy

6 parts, made of RivieraTex, RivieraTex is a 100% dyed polyester fabric, PU-coated, water-repellent, anthracite
4.680 EUR

6 parts, made of RivieraTex, RivieraTex is a 100% dyed polyester fabric, PU-coated, water-repellent, light grey
4.680 EUR



CSide pool deck drive

With remote control

2.243 EUR



CSide Pooldeck insulation

XPS insulation panels, incl. fixing brackets

for CS21 CSIDE 21 easy
383 EUR

for CS37/37L CSIDE 37 easy
588 EUR

for CS37/37L CSIDE 37L easy
588 EUR

for CS47 CSIDE 47 easy
693 EUR



Surcharge for Pooldeck to be covered by stones (stones not included)

for CS21 CSIDE 21 easy
746 EUR

for CS37/37L CSIDE 37 easy
1.197 EUR

for CS37/37L CSIDE 37L easy
1.197 EUR

for CS47 CSIDE 47 easy
1.507 EUR



CSide Pooldeck (ohne Verkleidung)

Bestehend aus:
Komplett Alusystem inkl. Entwässerungsebene, Edelstahlrolle mit doppeltem Kugellager, begehbare Laufschiene zum auflegen oder einfräsen, Abschlusswinkel mit Bürstendichtung, Steckverbinder und Montagematerial Montage bauseits, Montagematerial wird mitgeliefert. Lieferung mit dem Becken.

Pooldeck in zwei Öffnungsvarianten verfügbar: Horizontal und Vertikal
6.654 EUR

Coping



Coping stones granite, grey

for CS 21 | for CS 37 | for CS 37 |

Coping stones with overhanging nose
Dimensions: 60x60x6/3, mottled surface

for CS 21
2.925 EUR

CSIDE 21 easy

for CS 37
3.514 EUR

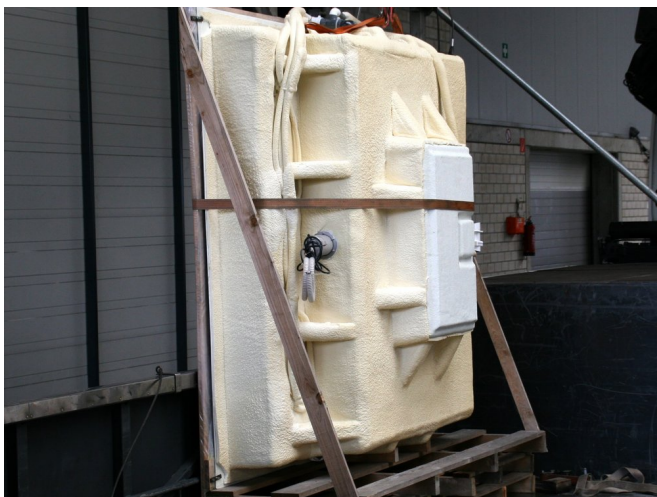
CSIDE 37 easy

for CS 37
3.514 EUR

CSIDE 37L easy

for CS 47
4.112 EUR

CSIDE 47 easy



Insulation

Energy conservation through jointless thermal insulation

sprayed PU foam insulation

CS 21 CSIDE 21 easy
1.465 EUR

CS 37 CSIDE 37 easy
1.891 EUR

CS 37 CSIDE 37L easy
1.891 EUR

CS 47 CSIDE 47 easy
2.862 EUR



4 x vertical inlets

- installed in the entry area
- including 4x winter plugs, 28/35 x 35 mm

incl.



Equipment package

incl. preinstalled equipment package consisting of

- 1 skimmer, incl. filter cartridge and skimmer basket
- 1 inlet jet 105, R 1 1/2" 4 x 8 mm, V4A
- 1 winter plug for inlet jet 105 (delivered separately)
- 1 safety overflow fitting WP 133
- 1 underwater light LED warm white
- 1 transformer 100 VA and 1 deck box (delivered separately)

incl.



Heat pump HKR 6 kW

For the heating of your C-SIDE

Dimensions: 790 x 330 x 580 mm
Weight: approx. 36 kg
Hydraulic connection adhesive screw connection d 50
Performance data:
Heat output A 15°/W 26°= 4,25kW
Heating capacity A 26°/W 26° = 6 kW
Cooling capacity approx. 4kW
Power consumption approx. 1.04 kW
Current consumption nominal 5A, fuse 16A C (slow blow)
Water flow rate > 2,3m³
Pressure loss heat exchanger kPa=2,4
Volume level in 10/1 mtr. approx. 38/50 dB(A)

Functionality starting at an outdoor temperature of 10 degrees.

1.865 EUR



Technical package for half-year use

Technical equipment with filter pump and bypass for a heat pump

Technical equipment mounted on a pallet consisting of:

- Self-priming filter pump 0.75 kW-230 V
- Bypass for an optional heat pump
- Filter pump control mounted
- Connected load: 1 x 16 Ampere - 230 V
- Size 120 cm x 80 cm (length x width)

This technical package can be used from spring to autumn. The pool is heated by an optional heat pump. When the outside temperature is above 10°C, the water can be heated up to 28°C.

The distance between pool and equipment should not exceed 5 m.

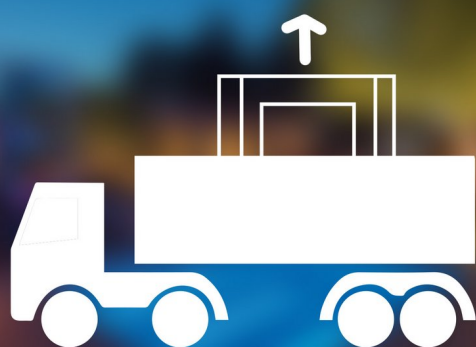
incl.



Surcharge for fixed date (day) delivery

Delivery to the dealer

205 EUR



Surcharge for delivery by a curtailer

crane unloading on site

Forwarding truck is to be opened at the top. This allows a crane to lift the pool out of the truck.

205 EUR



Piping material

for connecting the pool and technical shaft or heat pump

- 25m flexible hose, 50 mm
- 4 x reduction, 90°, 50 f/m
- 4 x elbow, 90° 2 x socket, 50 x 50 f/m
- 1 x Tangit cleaner 125 ml
- 1 x Griffon PVC glue WDF-05

incl.



Spare cartridge

Spare cartridge for cartridge filter

incl.



Manual vacuum cleaner

PVC blue

Remove the dirt from your CSIDE with light manual pumping movements. With removable, very fine filter, which can be easily rinsed out.

- Total length: 148 cm
- Colour: PVC-blue
- Suction width: 8 cm

231 EUR



surface care set

For the ideal treatment of the pool surface

Consisting of:

1 each of Pool Finish, Gel Edge Cleaner, Antigilb, stainless steel polish, gloves, microfibre cloth polishing cloth, polishing set, sponge, care instructions for swimming pools (Technical Info SB 9)
4 x each 1000-, 2000-grit wet sandpaper and 800-grit sandpaper

147 EUR



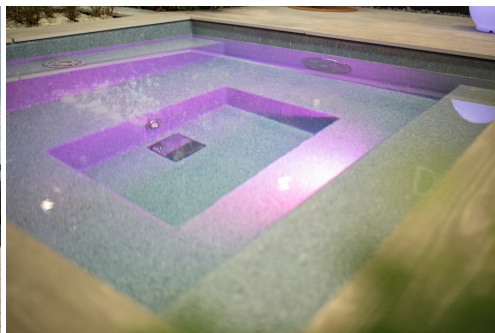
water care set HTH

consisting of:

1 x Lovibond pool tester
1 x HTH pH-Plus 5 kg
1 x HTH Briquettes 7 g, 2.5 kg inorganic UN-1748, Calcium hypochlorite, mixture, dry, 5.1, III, (E),
1 x HTH - pH Minus 5 kg
1 x HTH - Alkanal 5 kg
1 x Chlorine doser "Swim"

263 EUR

C-SIDE REFERENCES



YOUR C-SIDE DEALER



Partner Line

Geithus Næringspark, Gravfossveien 1
3360 Geithus
+4791651309
roy.paulsen@partnerline.no