

CSIDE POOLS

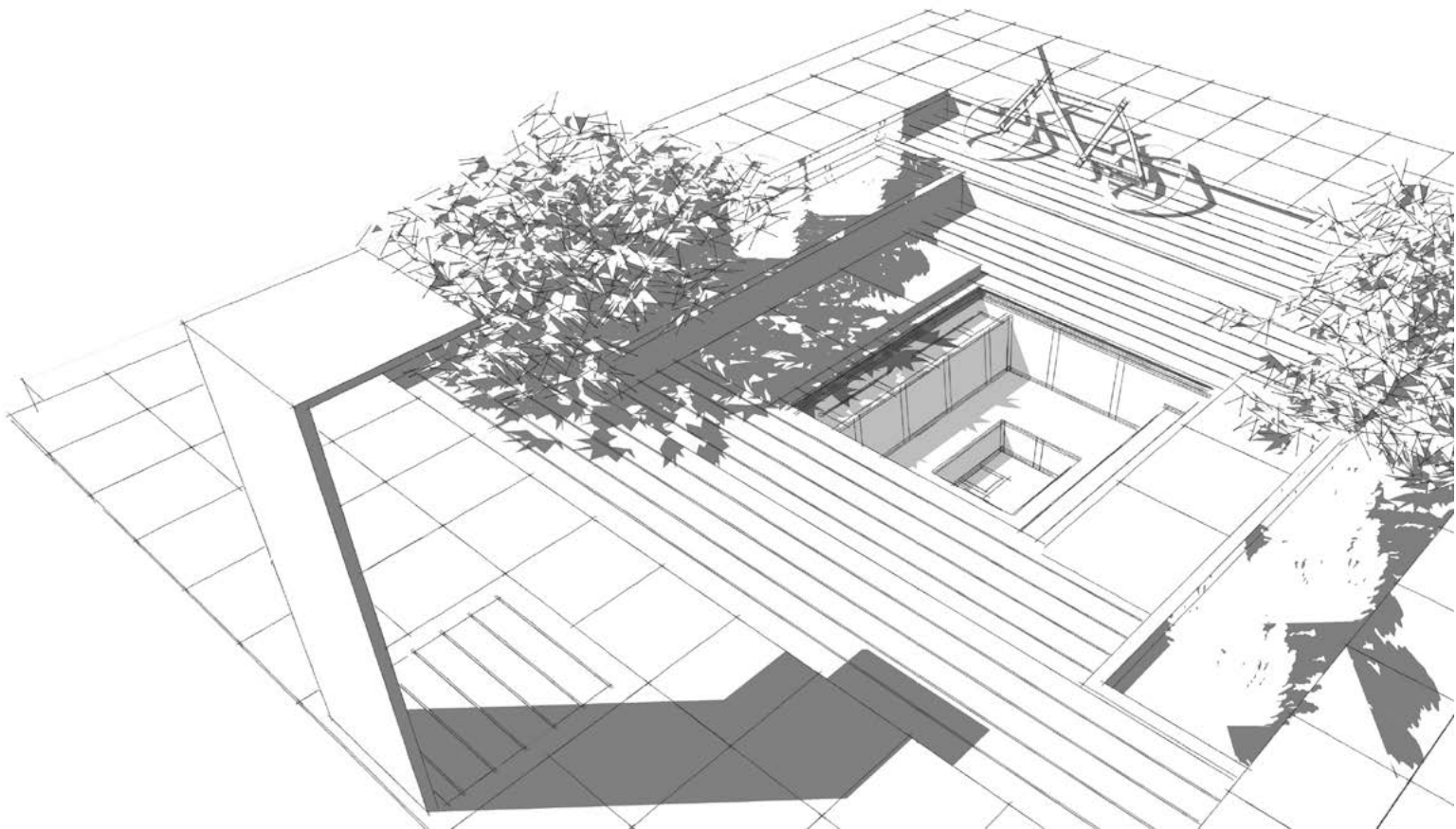
CSIDE special models

PRICES 2023 

Prices valid until revoked.

Selling prices in EUR incl. 25,0 % VAT.

CSIDEPOOLS.EU

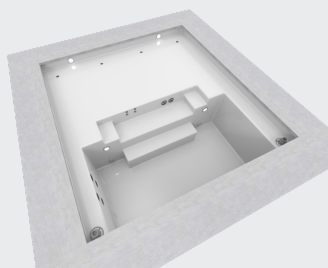


CSIDE special models

One-piece pool made of epoxy-acrylate, 6° wall incline with integrated steel frame, floor in sandwich construction with 3 cm insulation.

Inklusive Artikel

- Equipment package



CSIDE 37 L + SHALLOW WATER ZONE

Dimensions inside:
4,10 x 3,70 x 1,27 m

silver grey

21.187 EUR
 CS37FL-FWZ124

papyrus

21.187 EUR
 CS37FL-FWZ108

Granicite stone grey

22.810 EUR
 CS37FL-FWZ122

Mosaic tiled

36.996 EUR
 CS37FL-FWZ130

Accessories	CSIDE 37 L + SHALLOW WATER ZONE
Equipment package	incl.
Aqua Fun 4.0	5.725 EUR CS600003300
Cascade "Maine"	2.684 EUR CS600003001
Cascade "Cube"	3.550 EUR CS600003200
Spa-Massage-Pak	2.358 EUR CS600007000
4 x vertical inlets	593 EUR CS600004001
Other	CSIDE 37 L + SHALLOW WATER ZONE
Manual vacuum cleaner	231 EUR 7010003
Suction fitting d130	222 EUR CS4205010
Bottom outlet, elbow 90°	273 EUR 4205110
Electric vacuum cleaner	699 EUR CS600060010
Spare cartridge	79 EUR L817-3501
Inlet fitting 1 1/2"	310 EUR 3133121
Piping material	252 EUR CS600040010
surface care set	147 EUR 6451010
water care set HTH	262 EUR CS600030050

Coping	CSIDE 37 L + SHALLOW WATER ZONE
Copng stones Granite, grey for CS 37+ shallow water zone	4.711 EUR CS370040130
Technical equipment	CSIDE 37 L + SHALLOW WATER ZONE
Technique shaft XL	1.943 EUR CS600002001
Technical package for half-year use	1.765 EUR CS600002210
Heat pump HKR 6 kW	1.865 EUR CS600010004
Technique shaft XXL, incl. preparation for dosing system (dosing system not included)	2.679 EUR CS600002003
Terminal for Spatouch display	462 EUR CS600060020
Surcharge for electric heater 9 kW	1.155 EUR CS600008020
Technical package with Spatouch-display	3.519 EUR CS600002225
Lighting	CSIDE 37 L + SHALLOW WATER ZONE
WetLounge lighting in warm white	-
WetLounge lighting in RGB	-
Surcharge for 1x LED RGB light	956 EUR CS600006011
Surcharge for 2 x LED RGB light	2.059 EUR CS600006111
Additional underwater light LED warm white	893 EUR CS600005111

Freight	CSIDE 37 L + SHALLOW WATER ZONE
Surcharge for fixed date (day) delivery	205 EUR CS920000140
Surcharge for delivery by a curtainsider	205 EUR CS920000150



Equipment package

incl. preinstalled equipment package consisting of

- 1 skimmer, incl. filter cartridge and skimmer basket
- 1 inlet jet 105, R 1 ½" 4 x 8 mm, V4A
- 1 winter plug for inlet jet 105 (delivered separately)
- 1 safety overflow fitting WP 133
- 1 underwater light LED warm white
- 1 transformer 100 VA and 1 deck box (delivered separately)

incl.



Aqua Fun 4.0

4-jet flow & massage system (second technique shaft required)

The four jet nozzles of the Aqua-Fun 4.0 bring a strong current into the water. Furthermore, individual body parts can be massaged selectively.

consisting of:

- 4 Turbojet-Slimline massage-nozzles
- Jet pump 2,6 kW / 400V
- 1 pneumatic switch with 10 m PN hose
- PN switch box 400 V with contactor up to 2 kW (4 - 6A)
- 2 suction fittings polished

ATTENTION: The jet pump must always be installed below the water level. Please also note that you need an additional technique shaft for this pump.

5.725 EUR



Cascade "Maine"

Cascade "Mini V4A" consisting of:

- 1 x stainless steel cascade Mini V4A
 - 1 x 1 jet pump 1,0 kW 230 V with PN switch box
 - 1 x pneumatic switch with 5 m PN hose
 - 2 x suction fittings
- (pump is delivered either loose or installed in the optional technique shaft)

Note: without PN switch in combination with technical package with Spa Touch display

2.684 EUR

Technical equipment required



Cascade "Cube"

V4A stainless steel cascade with push button in the pool

- 1 x cascade "Cube" (delivered separately)
- 1 x pneumatic switch 107/1 V4A (mounted) with 10 m PN hose and 10 m protective hose (delivered separately)
- 1 x jet pump with PN switch box
- 2 x suction fittings with stainless steel cover (mounted)

Note: without PN switch in combination with technical package with Spa Touch display

3.550 EUR

Technical equipment required



Spa-Massage-Pak

2 x Turbojet-Slimline massage-nozzles for the lower back
 4 x Microjet-Slimline massage-nozzles for neck and shoulders
 2 x suction fittings, polished
 1 x pneumatic switch with 5 m PN hose
 1 x jet pump 230 V with PN switch box
 (pump is delivered either loose or installed in the optional technical shaft)

Note: without PN switch in combination with technical package with Spa Touch display

2.358 EUR

Technical equipment required



4 x vertical inlets

- installed in the entry area
 - including 4 B141x winter plugs, 28/35 x 35 mm

593 EUR



Manual vacuum cleaner

PVC blue

Remove the dirt from your CSIDE with light manual pumping movements. With removable, very fine filter, which can be easily rinsed out.

Total length: 148 cm

Colour: PVC-blue

Suction width: 8 cm

231 EUR



Suction fitting d130

(only needed additionally if you want to connect a sand filter)

- straight wall duct
- polished stainless steel
- hair safe according to DIN 13451
- $Q_{max} = 8.1 \text{ m}^3/\text{h}$

222 EUR



Bottom outlet, elbow 90°

(only required if you want to empty the basin completel)

- Red brass 1 1/2" f

273 EUR



Electric vacuum cleaner

with submersible pump and telescopic rod

Vacuum floor cleaning device with highly absorbent 7m³ pump and large-volume dirt bag. Suction head 350 mm made of thick-walled rot- and chemical-resistant ABS all-round rubber profile for protection against pool damage, rotating bristles on wheels for cleaning places that are difficult to access, height-adjustable strip brush 270 mm; spring-mounted with repositionable rod holder for cleaning floors and wall surfaces, 18 m underwater cable, equipped with an FI - personal protection plug and the TÜV test mark. Including easy-to-clean dirt bag with zipper. Connection for 230V 350W

699 EUR



Spare cartridge

Spare cartridge for cartridge filter

79 EUR



Inlet fitting 1 1/2"

red brass with plastic face plate, black or white

310 EUR



Piping material

for connecting the pool and technical shaft or heat pump

25m flexible hose, 50 mm
 4 x reduction, 90°, 50 f/m
 4 x elbow, 90° 2 x socket, 50 x 50 f/m
 1 x Tangit cleaner 125 ml
 1 x Griffon PVC glue WDF-05

252 EUR



surface care set

For the ideal treatment of the pool surface

Consisting of:

1 each of Pool Finish, Gel Edge Cleaner, Antigilb, stainless steel polish, gloves, microfibre cloth polishing cloth, polishing set, sponge, care instructions for swimming pools (Technical Info SB 9)
 4 x each 1000-, 2000-grit wet sandpaper and 800-grit sandpaper

147 EUR



water care set HTH

consisting of:

1 x Lovibond pool tester
 1 x HTH pH-Plus 5 kg
 1 x HTH Briquettes 7 g, 2.5 kg inorganic UN-1748, Calcium hypochlorite, mixture, dry, 5.1, III, (E),
 1 x HTH - pH Minus 5 kg
 1 x HTH - Alkanal 5 kg
 1 x Chlorine doser "Swim"

262 EUR

Coping



Copng stones Granite, grey for CS 37+ shallow water zone

Coping stones with overhanging nose
Dimensions: 60x60x6/3, mottled surface

4.711 EUR

Technical equipment



Technique shaft XL

incl. cover 1064 x 726 x 650 mm

Technique shaft XL

incl. cover 1064 x 726 x 650 mm

technical package, installed in technique shaft, consisting of:

- technique shaft XL

incl. inspection platform, shaft drain and cable bushing

(article only available in connection with a technical package)

Note:

Technique shafts must ALWAYS be installed below water level.

Please note that the technology mounted in the shaft ALWAYS needs to be installed below the water level.

1.943 EUR

Technical equipment required



Technical package for half-year use

Technical equipment with filter pump and bypass for a heat pump

This technical package can be used from spring to autumn. The pool is heated by an optional heat pump. When the outside temperature is above 10°C, the water can be heated up to 28°C.

The distance between pool and equipment should not exceed 5 m. Technical package can also be installed above water level.

Technical equipment mounted on a pallet consisting of:

- Self-priming filter pump 0.75 kW-230 V
- Check valve for filter pump
- Bypass for an optional heat pump
- Filter pump control mounted on inspection platform
- Connected load: 1 x 16 Ampere - 230 V
- Size 120 cm x 80 cm (length x width)

1.765 EUR



Heat pump HKR 6 kW

For the heating of your C-SIDE

Dimensions: 790 x 330 x 580 mm

Weight: approx. 36 kg

Hydraulic connection adhesive screw connection d 50

Performance data:

Heat output A 15°/W 26° = 4,25kW

Heating capacity A 26°/W 26° = 6 kW

Cooling capacity approx. 4kW

Power consumption approx. 1.04 kW

Current consumption nominal 5A, fuse 16A C (slow blow)

Water flow rate > 2,3m³

Pressure loss heat exchanger kPa=2,4

Volume level in 10/1 mtr. approx. 38/50 dB(A)

Functionality starting at an outdoor temperature of 10 degrees.

1.865 EUR



Technique shaft XXL, incl. preparation for dosing system (dosing system not included)

incl. cover (1600 x 900 x 670 mm)

technical package, installed in technique shaft, consisting of:

- technique shaft XXL incl. inspection platform, shaft drain and cable bushing (article only available in connection with a technical package)

Note:

Technique shafts must ALWAYS be installed below water level.

2.679 EUR



Terminal for Spatouch display

stainless steel, ground surface

height: 1.000 mm

462 EUR

Technical package with Spatouch-display required



Surcharge for electric heater 9 kW

total capacity: 3 kW + 9 kW

Upgrade for the technical package with Spatouch-display with a stronger electric heater, that allows to heat up the water more quickly.

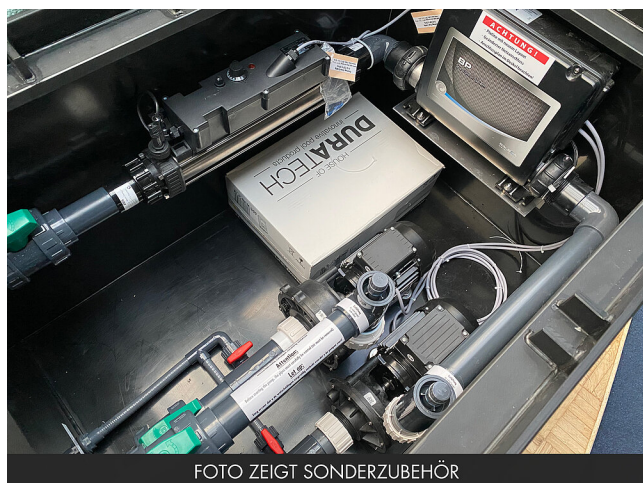
Preinstalled on the technical package

Connected load: 1 x 16 Ampere - 230 V, 1 x 16 Ampere - 400 V

An insulating pool cover is required to heat up the pool efficiently.

1.155 EUR

Technical package with Spatouch-display required



Technical package with Spatouch-display

with frost protection, suitable for winter use

Technical equipment designed for automatic year-round use. The pool is heated by the electric heater. The distance between pool and equipment should not exceed 5 m.

Technical equipment mounted on a pallet consisting of:

- Self-priming filter pump 0.75 kW-230 V
- Pool-Control with Spatouch-display and temperature control and remote control (Spa touch-display and IR-receiver are delivered separately)
- electric heaters 230 V, 1 x 3 kW / 1 x 2 kW
- connected load: 2 x 16 Ampere

Note:

max. water temperature: 32°C for colours papyrus, silver grey and granicite stonegrey

max. water temperature: 38°C for mosaic tiled pools

3.519 EUR

Lighting



WetLounge lighting in warm white

- 2 x LED underwater lights, warm white
- 2 x deck box (KU)

auf Anfrage



WetLounge lighting in RGB

- 2 x LED underwater lights RGB
- 2 x deck box (KU)

auf Anfrage



Surcharge for 1x LED RGB light

Coloured LED light

1 x underwater light LED RGB (HT) with DMX control box and remote control

956 EUR

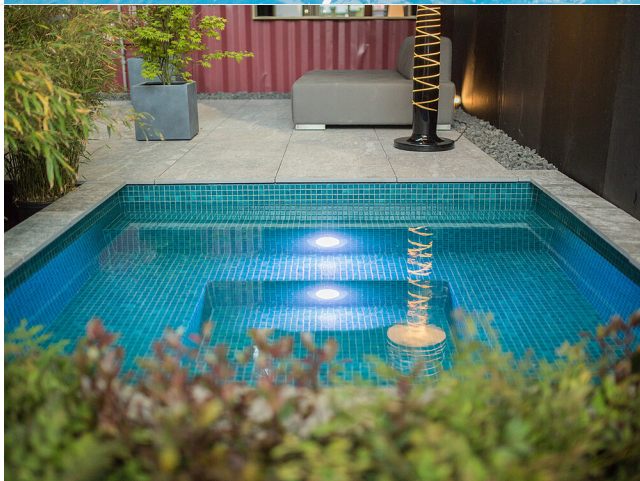


Surcharge for 2 x LED RGB light

Coloured LED light

2 x underwater light LED RGB (HT) with DMX control box and remote control and second deck box (KU)

2.059 EUR



Additional underwater light LED warm white

1 x underwater light LED warm white (HT), transformer 100 VA and second deck box (KU)

893 EUR

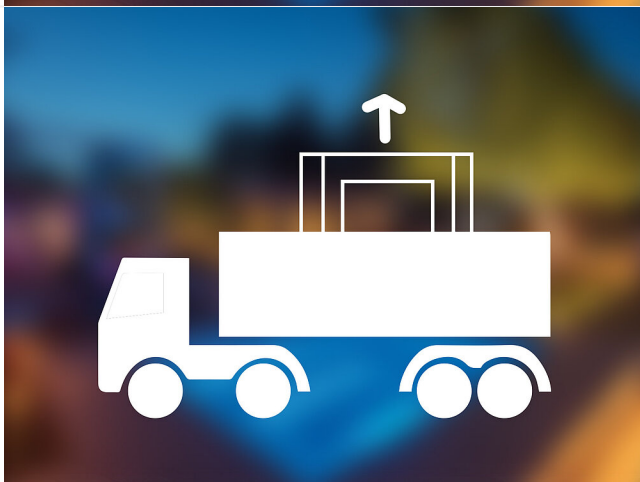
Freight



Surcharge for fixed date (day) delivery

Delivery to the dealer

205 EUR



Surcharge for delivery by a curtainsider

crane unloading on site

Forwarding truck is to be opened at the top. This allows a crane to lift the pool out of the truck.

205 EUR

C-SIDE REFERENCES



YOUR C-SIDE DEALER



Partner Line

Geithus Næringspark, Gravfossveien 1

3360 Geithus

+4791651309

roy.paulsen@partnerline.no