

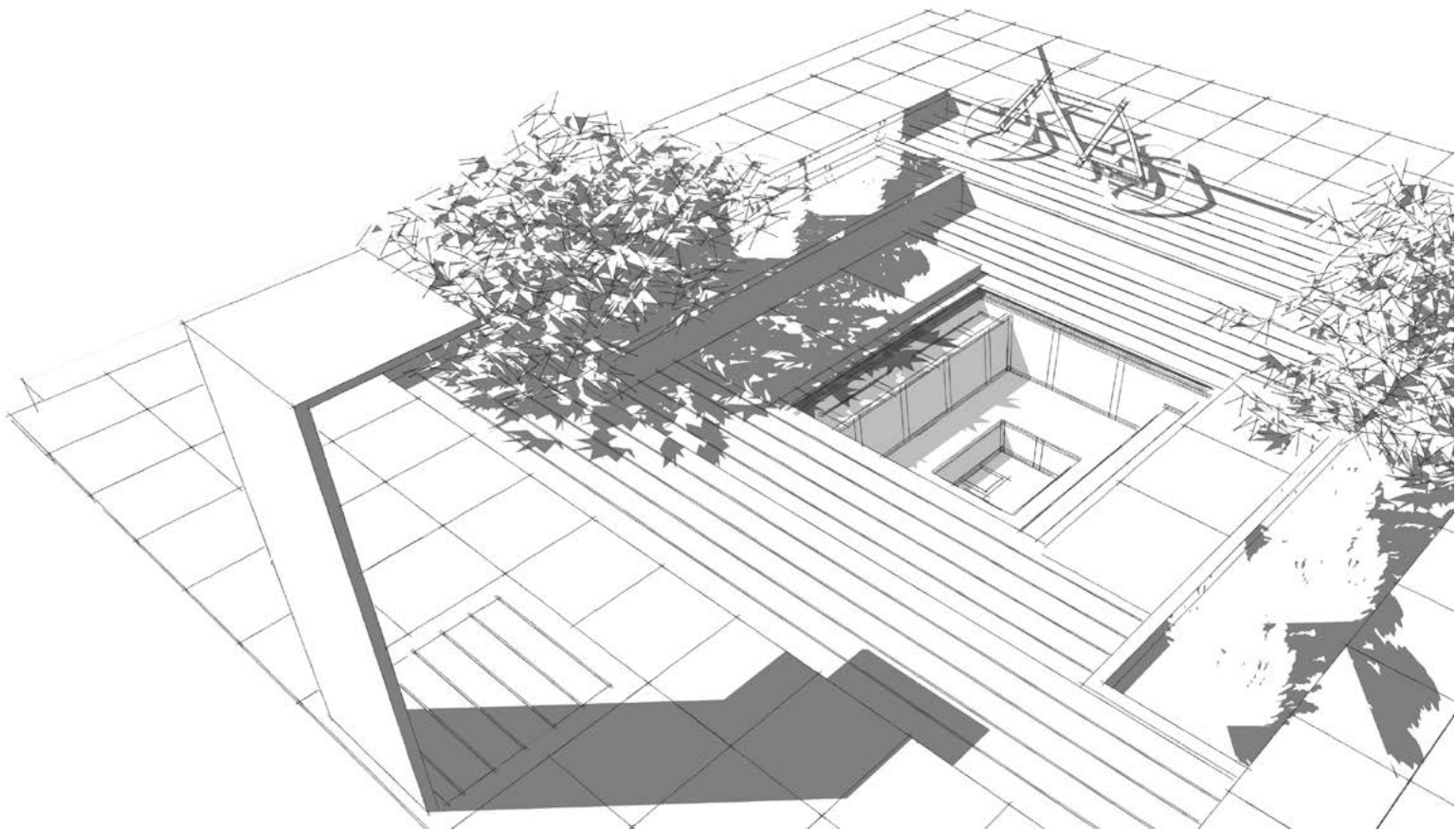
CSIDE POOLS

CSIDE special models

PRICES 2022 

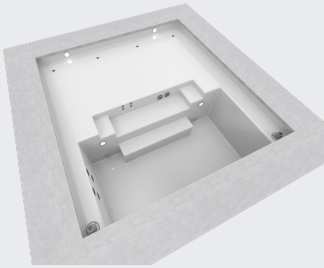
Prices valid until revoked.
Selling prices in EUR incl. 25,0 % VAT.

CSIDEPOOLS.EU



CSIDE special models

One-piece pool made of epoxy-acrylate, 6° wall incline with integrated steel frame, floor in sandwich construction with 3 cm insulation.



CSIDE 37 L + SHALLOW WATER ZONE

Dimensions inside:
4,10 x 3,70 x 1,27 m

papyrus

19.711 EUR
CS37FL-FWZ108

Granite stone grey

21.219 EUR
CS37FL-FWZ122

Mosaic tiled

34.419 EUR
CS37FL-FWZ130

silver grey

19.711 EUR
CS37FL-FWZ124

Accessories		CSIDE 37 L + SHALLOW WATER ZONE
Aqua Fun 4.0	6.562 EUR	CS600003300
Cascade "Maine"	2.500 EUR	CS600003001
Cascade "Cube"	3.640 EUR	CS600003200
Spa-Massage-Pak	2.195 EUR	CS600007000
4 x vertical inlets	557 EUR	CS600004001
Ausstattungspaket	incl.	
Other		CSIDE 37 L + SHALLOW WATER ZONE
Manual vacuum cleaner	215 EUR	7010003
Suction fitting d130	221 EUR	CS4205010
Pool care set	175 EUR	CS600030020
Bottom outlet, elbow 90°	257 EUR	4205110
Electric vacuum cleaner	699 EUR	CS600060010
Spare cartridge	74 EUR	L817-3501
Inlet fitting 1 1/2"	289 EUR	3133121
Piping material	236 EUR	CS600040010
Coping		CSIDE 37 L + SHALLOW WATER ZONE
Copng stones Granite, grey for CS 37+ shallow water zone	4.386 EUR	CS370040130

Technical equipment		CSIDE 37 L + SHALLOW WATER ZONE
Technique shaft XL	1.891 EUR CS600002001	
Technical package for half-year use	1.765 EUR CS600002210	
Heat pump HKR 6 kW	1.906 EUR CS600010002	
Technique shaft XXL, incl. preparation for dosing system (dosing system not included)	2.574 EUR CS600002003	
Terminal for Spatouch display	431 EUR CS600060020	
Surcharge for electric heater 9 kW	1.076 EUR CS600008020	
Technical package with Spatouch-display	3.729 EUR CS600002225	
Lighting		CSIDE 37 L + SHALLOW WATER ZONE
WetLounge lighting in warm white	1.387 EUR CS600005201	
WetLounge lighting in RGB	1.597 EUR CS600006201	
Surcharge for 1x LED RGB light	893 EUR CS600006011	
Surcharge for 2 x LED RGB light	1.917 EUR CS600006111	
Additional underwater light LED warm white	835 EUR CS600005111	
Freight		CSIDE 37 L + SHALLOW WATER ZONE

Accessories



Aqua Fun 4.0

4-jet flow & massage system (second technique shaft required)

The four jet nozzles of the Aqua-Fun 4.0 bring a strong current into the water. Furthermore, individual body parts can be massaged selectively.

consisting of:

- 4 Turbojet-Slimline massage-nozzles
- Jet pump 2,6 kW / 400V
- 1 pneumatic switch with 10 m PN hose
- PN switch box 400 V with contactor up to 2 kW (4 - 6A)
- 2 suction fittings polished

ATTENTION: The jet pump must always be installed below the water level. Please also note that you need an additional technique shaft for this pump.

6.562 EUR



Cascade "Maine"

Cascade "Mini V4A" consisting of:

- 1 x stainless steel cascade Mini V4A
- 1 x 1 jet pump 1,0 kW 230 V with PN switch box
- 1 x pneumatic switch with 5 m PN hose
- 2 x suction fittings

(pump is delivered either lose or installed in the optional technique shaft)

Note: without PN switch in combination with technical package with Spa Touch display

2.500 EUR

Technical equipment required



Cascade "Cube"

V4A stainless steel cascade with push button in the pool

- 1 x cascade "Cube" (delivered separately)
- 1 x pneumatic switch 107/1 V4A (mounted) with 10 m PN hose and 10 m protective hose (delivered separately)
- 1 x jet pump with PN switch box
- 2 x suction fittings with stainless steel cover (mounted)

Note: without PN switch in combination with technical package with Spa Touch display

3.640 EUR

Technical equipment required



Spa-Massage-Pak

- 2 x Turbojet-Slimline massage-nozzles for the lower back
- 4 x Microjet-Slimline massage-nozzles for neck and shoulders
- 2 x suction fittings, polished
- 1 x pneumatic switch with 5 m PN hose
- 1 x jet pump 230 V with PN switch box (pump is delivered either loose or installed in the optional technical shaft)

Note: without PN switch in combination with technical package with Spa Touch display

2.195 EUR

Technical equipment required



4 x vertical inlets

- installed in the entry area
- including 4 B141x winter plugs, 28/35 x 35 mm

557 EUR



Ausstattungspaket

inkl. vormont. Ausstattungspaket bestehend aus:

- Skimmer, inkl. Filterkartusche und Siebkorb
- Einlaufdüse 105, R1 1/2" 4x8mm Kugeldüse V4A
- Winterverschlussstopfen
- Sicherheitsüberlauf WP133
- 1 x Unterwasserscheinwerfer LED 12V-warmweiss mit Blende satiniert und -Nische, inkl. UWS-Aufnahme, 4xSenkschraube M5x12
- 1 x Trafo 100VA und Kabelanschlußdose aus Kunststoff werden LOSE geliefert

incl.



Manual vacuum cleaner

PVC blue

Remove the dirt from your CSIDE with light manual pumping movements. With removable, very fine filter, which can be easily rinsed out.

Total length: 148 cm

Colour: PVC-blue

Suction width: 8 cm

215 EUR



Suction fitting d130

(only needed additionally if you want to connect a sand filter)

- straight wall duct
- polished stainless steel
- hair safe according to DIN 13451
- Qmax = 8.1 m³/h

221 EUR



Pool care set

- pH (+) granulate, 1 kg
- pH (-) granulate, 1 kg
- chlorine granulate, in 1 kg can,
- pooltester Chlorine/pH incl. 20 tablets all stored in lockable plastic box

175 EUR



Bottom outlet, elbow 90°

(only required if you want to empty the basin completel)

· Red brass 1 1/2" f

257 EUR



Electric vacuum cleaner

with submersible pump and telescopic rod

Vacuum floor cleaning device with highly absorbent 7m³ pump and large-volume dirt bag. Suction head 350 mm made of thick-walled rot- and chemical-resistant ABS all-round rubber profile for protection against pool damage, rotating bristles on wheels for cleaning places that are difficult to access, height-adjustable strip brush 270 mm; spring-mounted with repositionable rod holder for cleaning floors and wall surfaces, 18 m underwater cable, equipped with an FI - personal protection plug and the TÜV test mark. Including easy-to-clean dirt bag with zipper. Connection for 230V 350W

699 EUR



Spare cartridge

Spare cartridge for cartridge filter

74 EUR



Inlet fitting 1 1/2"

red brass with plastic face plate, black or white

289 EUR



Piping material

for connecting the pool and technical shaft or heat pump

25m flexible hose, 50 mm

4 x reduction, 90°, 50 f/m

4 x elbow, 90° 2 x socket, 50 x 50 f/m

1 x Tangit cleaner 125 ml

1 x Griffon PVC glue WDF-05

236 EUR

Coping



Copng stones Granite, grey for CS 37+ shallow water zone

Coping stones with overhanging nose

Dimensions: 60x60x6/3, mottled surface

4.386 EUR

Technical equipment



Technique shaft XL

incl. cover 1064 x 726 x 650 mm

Technique shaft XL
incl. cover 1064 x 726 x 650 mm
technical package, installed in technique shaft,
consisting of:
- technique shaft XL
incl. inspection platform, shaft drain and cable
bushing
(article only available in connection with a technical
package)

Note:

Technique shafts must ALWAYS be installed below
water level.

Please note that the technology mounted in the shaft
ALWAYS needs to be installed below the water level.

1.891 EUR

Technical equipment required



Technical package for half-year use

**Technical equipment with filter pump and bypass
for a heat pump**

This technical package can be used from spring to
autumn. The pool is heated by an optional heat pump.
When the outside temperature is above 10°C, the
water can be heated up to 28°C.

The distance between pool and equipment should not
exceed 5 m. Technical package can also be installed
above water level.

Technical equipment mounted on a pallet consisting
of:

- Self-priming filter pump 0.75 kW-230 V
- Check valve for filter pump
- Bypass for an optional heat pump
- Filter pump control mounted on inspection platform
- Connected load: 1 x 16 Ampere - 230 V
- Size 120 cm x 80 cm (length x width)

1.765 EUR



Heat pump HKR 6 kW

For the heating of your C-SIDE

Dimensions: 790 x 330 x 580 mm

Weight: approx. 36 kg

Hydraulic connection adhesive screw connection d 50

Performance data:

Heat output A 15°/W 26° = 4,25kW

Heating capacity A 26°/W 26° = 6 kW

Cooling capacity approx. 4kW

Power consumption approx. 1.04 kW

Current consumption nominal 5A, fuse 16A C (slow blow)

Water flow rate > 2,3m³

Pressure loss heat exchanger kPa=2,4

Volume level in 10/1 mtr. approx. 38/50 dB(A)

Functionality starting at an outdoor temperature of 10 degrees.

1.906 EUR

Technical package for half-year use required



Technique shaft XXL, incl. preparation for dosing system (dosing system not included)

incl. cover (1600 x 900 x 670 mm)

technical package, installed in technique shaft, consisting of:

- technique shaft XXL incl. inspection platform, shaft drain and cable bushing
(article only available in connection with a technical package)

Note:

Technique shafts must ALWAYS be installed below water level.

2.574 EUR



Terminal for Spatouch display

stainless steel, ground surface

height: 1.000 mm

431 EUR

Technical package with Spatouch-display required



Surcharge for electric heater 9 kW

total capacity: 3 kW + 9 kW

Upgrade for the technical package with Spatouch-display with a stronger electric heater, that allows to heat up the water more quickly.

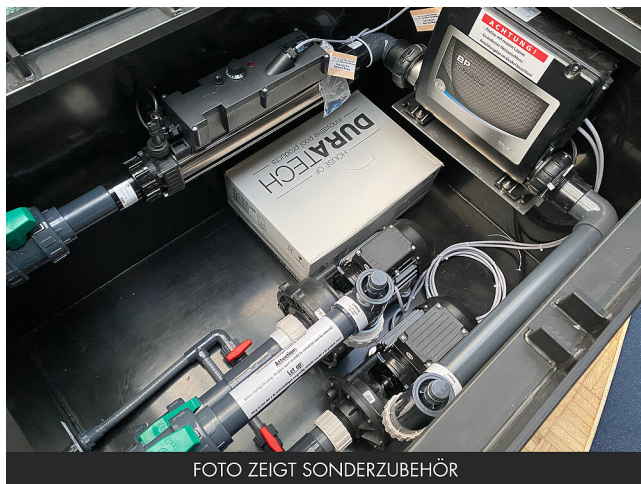
Preinstalled on the technical package

Connected load: 1 x 16 Ampere - 230 V, 1 x 16 Ampere - 400 V

An insulating pool cover is required to heat up the pool efficiently.

1.076 EUR

Technical package with Spatouch-display required



Technical package with Spatouch- display

with frost protection, suitable for winter use

Technical equipment designed for automatic year-round use. The pool is heated by the electric heater. The distance between pool and equipment should not exceed 5 m.

Technical equipment mounted on a pallet consisting of:

- Self-priming filter pump 0.75 kW-230 V
- Pool-Control with Spatouch-display and temperature control and remote control (Spa touch-display and IR-receiver are delivered separately)
- electric heaters 230 V, 1 x 3 kW / 1 x 2 kW
- connected load: 2 x 16 Ampere

Note:

max. water temperature: 32°C for colours papyrus,
silver grey and granicite stonegrey

max. water temperature: 38°C for mosaic tiled pools

3.729 EUR

Lighting



WetLounge lighting in warm white

- 2 x LED underwater lights, warm white
- 2 x deck box (KU)

1.387 EUR



WetLounge lighting in RGB

- 2 x LED underwater lights RGB
- 2 x deck box (KU)

1.597 EUR



Surcharge for 1x LED RGB light

Coloured LED light

- 1 x underwater light LED RGB (HT) with DMX control box and remote control

893 EUR



Surcharge for 2 x LED RGB light

Coloured LED light

2 x underwater light LED RGB (HT) with DMX control box and remote control and second deck box (KU)

1.917 EUR



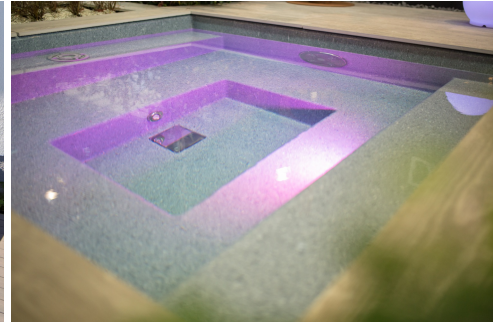
Additional underwater light LED warm white

1 x underwater light LED warm white (HT), transformer 100 VA and second deck box (KU)

835 EUR

Freight

C-SIDE REFERENCES



YOUR C-SIDE DEALER

CSIDE
POOLS

Partner Line

Geithus Næringspark, Gravfossveien 1

3360 Geithus

+4791651309

roy.paulsen@partnerline.no