



MLine
MLine
MLine

CUSTOM-MADE PREFABRICATED SWIMMING POOLS

RivieraPool[®]
PREFABRICATED SWIMMING POOLS • WHIRLPOOLS

The Glass Mosaic Line from RivieraPool ...

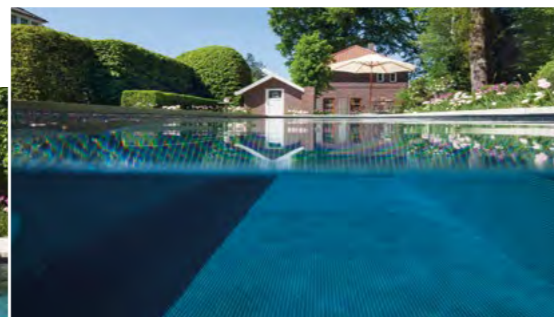
This is our concept, for today's prefabricated swimming pools: a smart and intelligent design offering everything a modern swimming pool needs. Individually designed to your wishes and completely manufactured in our factory using state-of-the-art technology.

This is an example of a simple and yet very stylish built-in pool, placed in front of the pool house. There is a clear uninter-

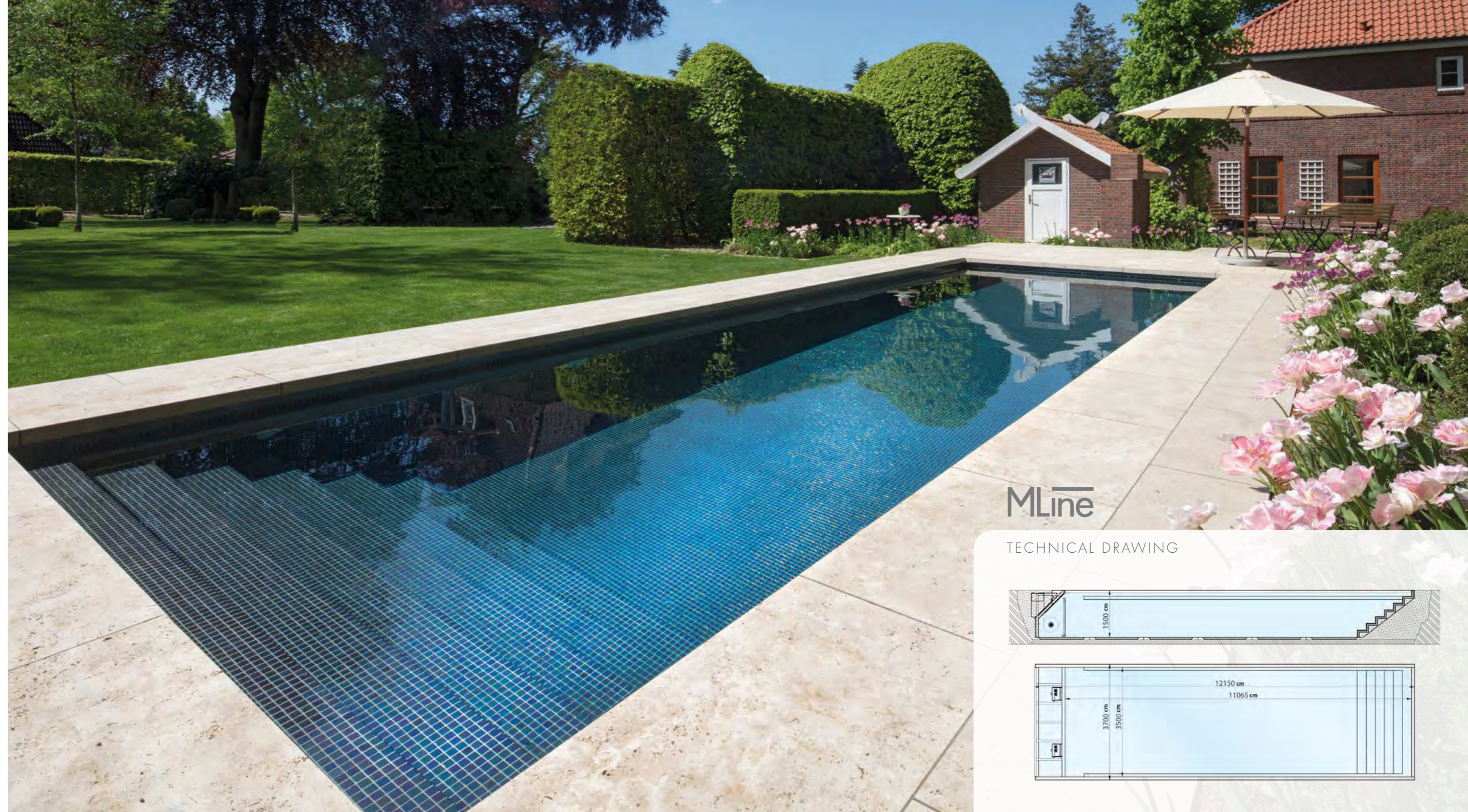
rupted view from the living room through to the pool and garden. The MLine pool (size: 3.70 x 12.50 m) has been lined with glass mosaic. The fine tiling pattern and light reflects on the walls and floors to create a natural appearance on an ultra-modern construction.

MLine swimming pools are formed from a shell made of multilayered epoxy acrylate reinforced with fibreglass. The glass mosaic

tiling is laid on an epoxy resin before being grouted in place. The result is a high-quality material structure inseparable offering excellent elasticity. This allows transporting the ready-made mosaic tiled pool over long distances by lorry.

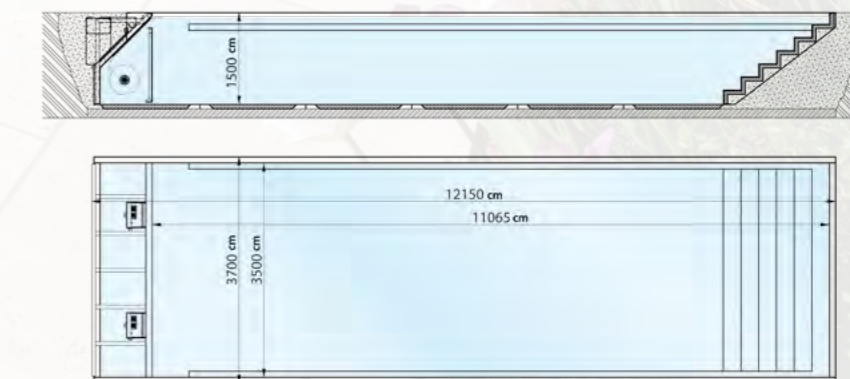


Tiled with Ezari glass mosaic (Iris/Ebano Collection).



MLine

TECHNICAL DRAWING



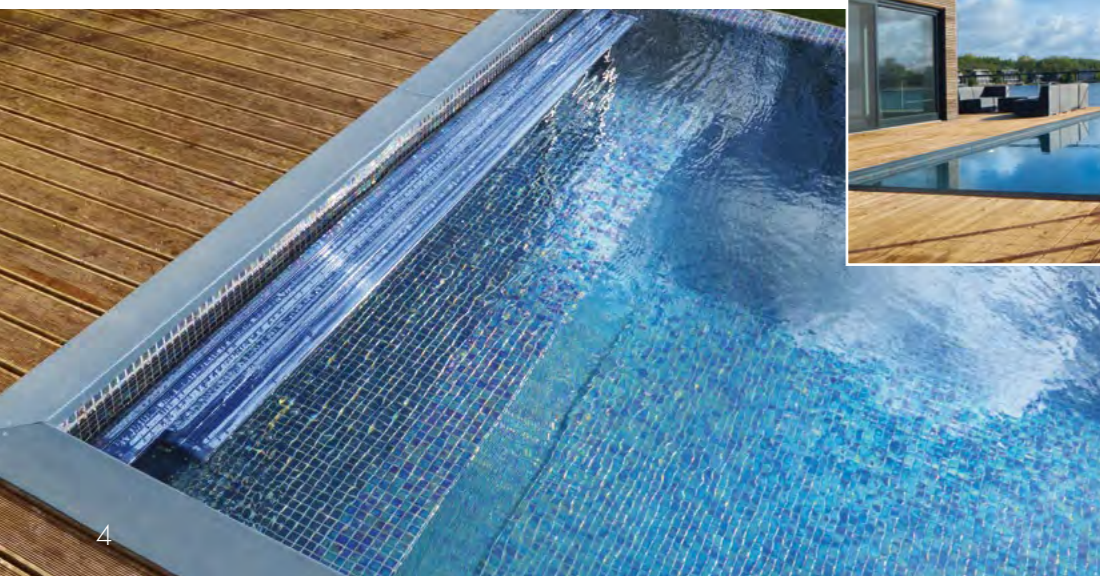
Perfect poolside living - limitless possibilities ...

Would you like your terrace gently floating above the water surface? Then choose a skimmer pool with a high water level. Or do you want the water surface to reflect the terrace like a mirror, seamlessly flowing into each other? Then an overflow "infinity" pool with a concealed channel is the right choice for you. Or should the water surface follow the contours of its surroundings as a terraced flow, offering a stunning view

of the valley? Bathing means relaxing. Stress and busyness reduce, and you calm down in contact with the water. A beautiful ambience stimulates the senses. The indirect light of the underwater spotlights creates a unique atmosphere. Relax in your MLine pool when it's cold outside and enjoy the warm water on your skin as well as the invigorating massage functions. Soft lighting transforms your pool into a stylish oasis of

relaxation. Shimmering mosaic tiles turn your pool into a pool with glamour! Or do you prefer a matt natural stone ambience?

Find your style and let yourself be inspired on

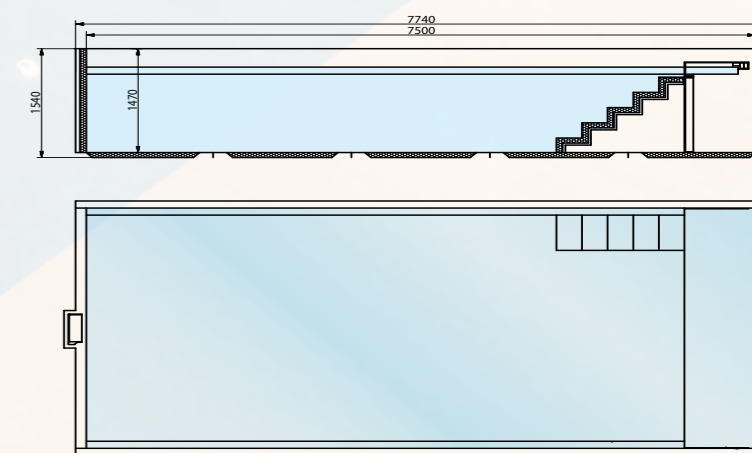


Mosaic pool with "Comfort" steps infinity edge and seat bench in the format 3 x 10 m. Tiled with Ezari glass mosaic (Iris/Zafiro collection).



MLine

TECHNICAL DRAWING



Mosaic pool with "Comfort" stairs and bench in a 3.4 x 7.5 m format. Tiled with Ezari glass mosaic (Zen/Cremestone collection).

Infinity channel. A little more to see.

A classic system like this will inspire many generations. Straight-line architecture with the "Palace" entry step system built in across the full width at one end of the pool and the roller shutter niche at the opposite end create a timelessly modern look. Add to this a chic mosaic surface from the high-class Ezarri line impressively reflecting the light of the underwater spotlights. With the smart light natural stone terrace, the colour

of the water can reach its full potential. Ezarri "Iris Ebano", the darker version of the shimmering mosaics, creates optical water depth and a dignified atmosphere. With its elegant appearance due to the light-blue water, this is not just any "normal" pool. This is achieved by the cleverly staged colour ensemble of nature: a deep dark mountain lake with earthy beach areas. Architecturally, it's all quite minimised. This

is how it can look. Opposite the steps, the Infinity channel adds some glamour to the pool which had been tiled at the factory and delivered in one piece. All jets, nozzles and lights are already integrated. This is today's definition of a "customised ready-to-use-pool".



MLine

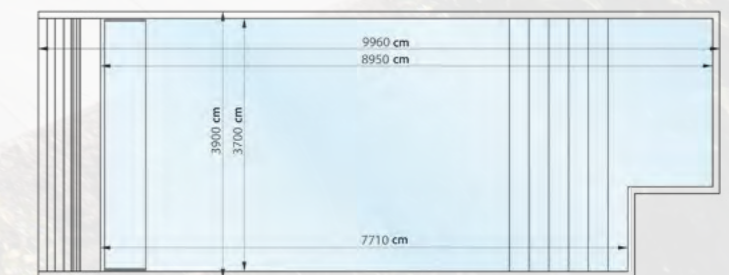
See it in reality at our RivieraPoolGarten at the Hofquartier, Taufkirchen-München (www.pools.bayern):

The MLine pool in the size 3.70 x 9.0 m in connection with a Strato whirlpool. The swimming pool's water surface is as high as possible and is lined with Ezarri glass mosaic (Iris/Ebano Collection). The infinity edge, a massage bench and the WetLounge make the pool a real eye-catcher.



MLine

TECHNICAL DRAWING



Top-class living space – Your indoor pool

Outdoor or indoor pool - with our MLine, the choice is yours! A very special wellness oasis – embedded straight into the floor. A reflective surface that mirrors the spaciousness of the indoor pool. An atmosphere that invites you to relax: Taking quiet laps through a smooth water surface. Or sit in the sauna with a view of the pool... With

a MLine pool, your indoor wellness area becomes your island of relaxation. Make your wellness dream come true! Regular swimming benefits your body and is a health-promoting measure on its own. Sport in the water is the best therapy! If you've done relaxing, try our counter-current unit. Various jets create a unique swimming

experience. Counter-swimming equipment maintains your fitness and gets your body into shape.



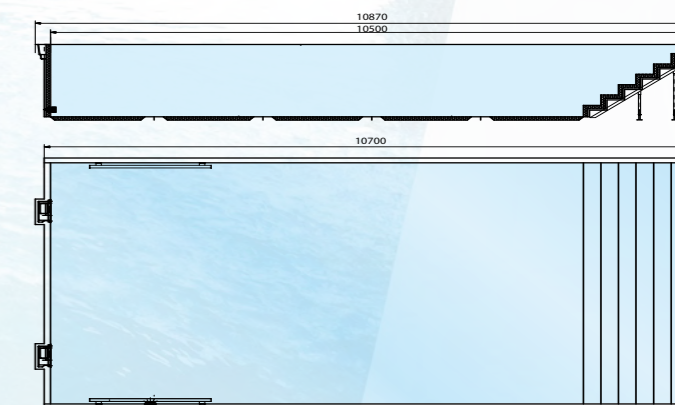
"Palace" staircase
tiled with Ezarri glass mosaic
(Iris/Ebano collection).

*These elements are combined
in a stylish way and adapted to
your wishes.*



MLine

TECHNICAL DRAWING



Design, functionality and quality

A very special high water level. MLine pools are durable, energy-saving and made for bathing pleasure without limits. The basis is a high-quality fibreglass pool, which is given a personal touch with mosaic tiling. An aesthetic, reflective pool with individual mosaic tiling is part of the exclusive basic equipment of bathing culture. After all,

swimming pools are not just used for the after-work training session. They're also for mental relaxation. The high-quality mosaic elements can be selected from a range of different collections and thus provide individual surface designs. The design impresses with clear lines and harmonious proportions. A high

water table blends seamlessly into the landscape.

You will find the fascinating colour world of glass mosaics at:



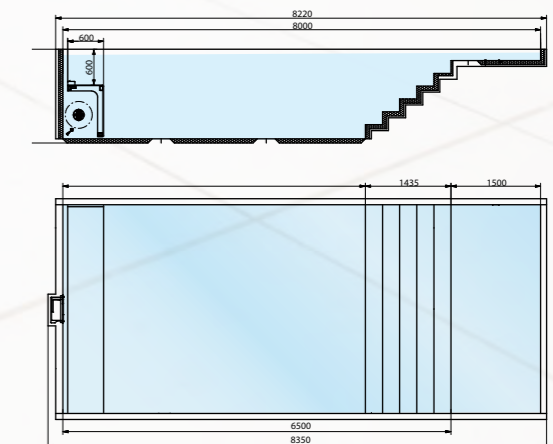
Staircase "Palace",
water surface 3.5 x 8 m
tiled with Ezarri glass mosaic
(Metallic/Lava collection).

The roller shutter is located under the massage bench, which allows you to sit comfortably in deep water. Optionally, jets can be installed in the pool's back wall to provide a strong massage effect.



MLine

TECHNICAL DRAWING

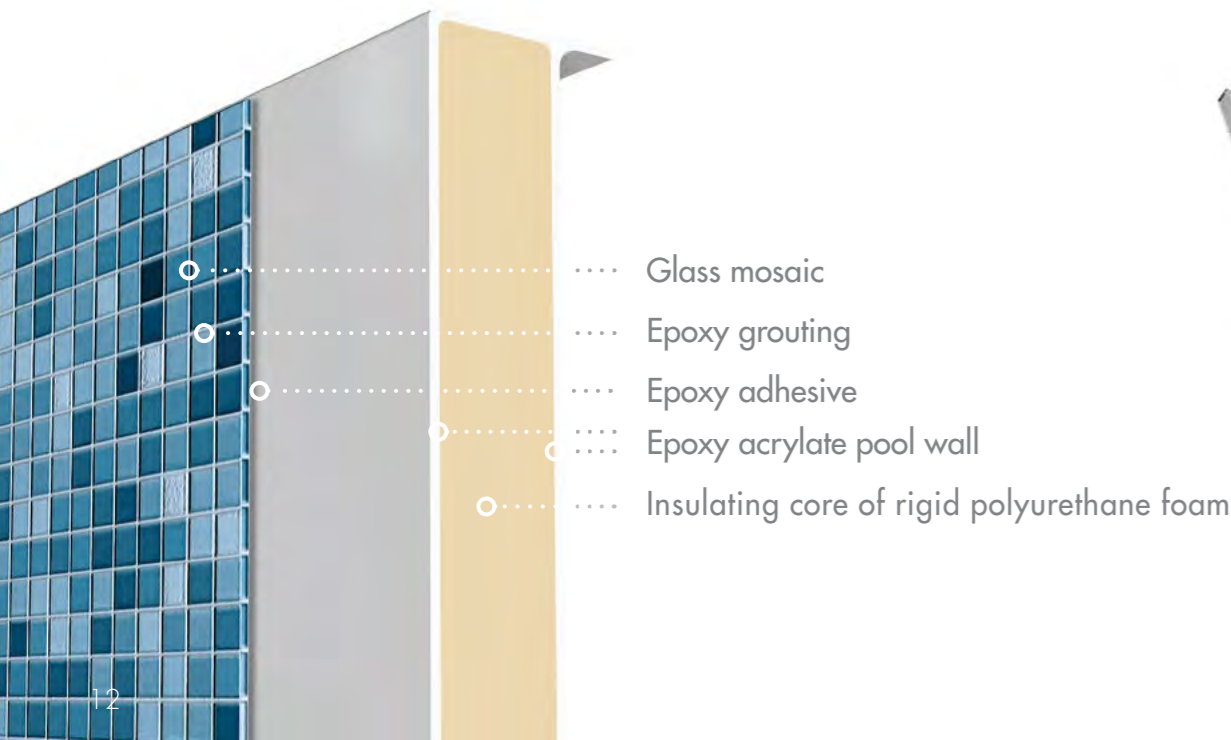


The construction

1 High quality wall construction

The basis of the MLine structure is a 60 mm thick insulated core which has an extremely low thermal transmittance and can be tailored to every desired size. The core is then coated with several layers of fibreglass-reinforced epoxy acrylate. This composite material provides a high chemical resistance, extreme stability and, at the same time high elasticity. For this reason, same combination of materials is used to manufacture wind turbines, aero-

planes and yachts. The glass mosaic is then glued to the surface with an epoxy adhesive and grouted. The result is a high quality material structure that is no longer separable but still flexible enough to bear up against movements during transport or external temperature differences.

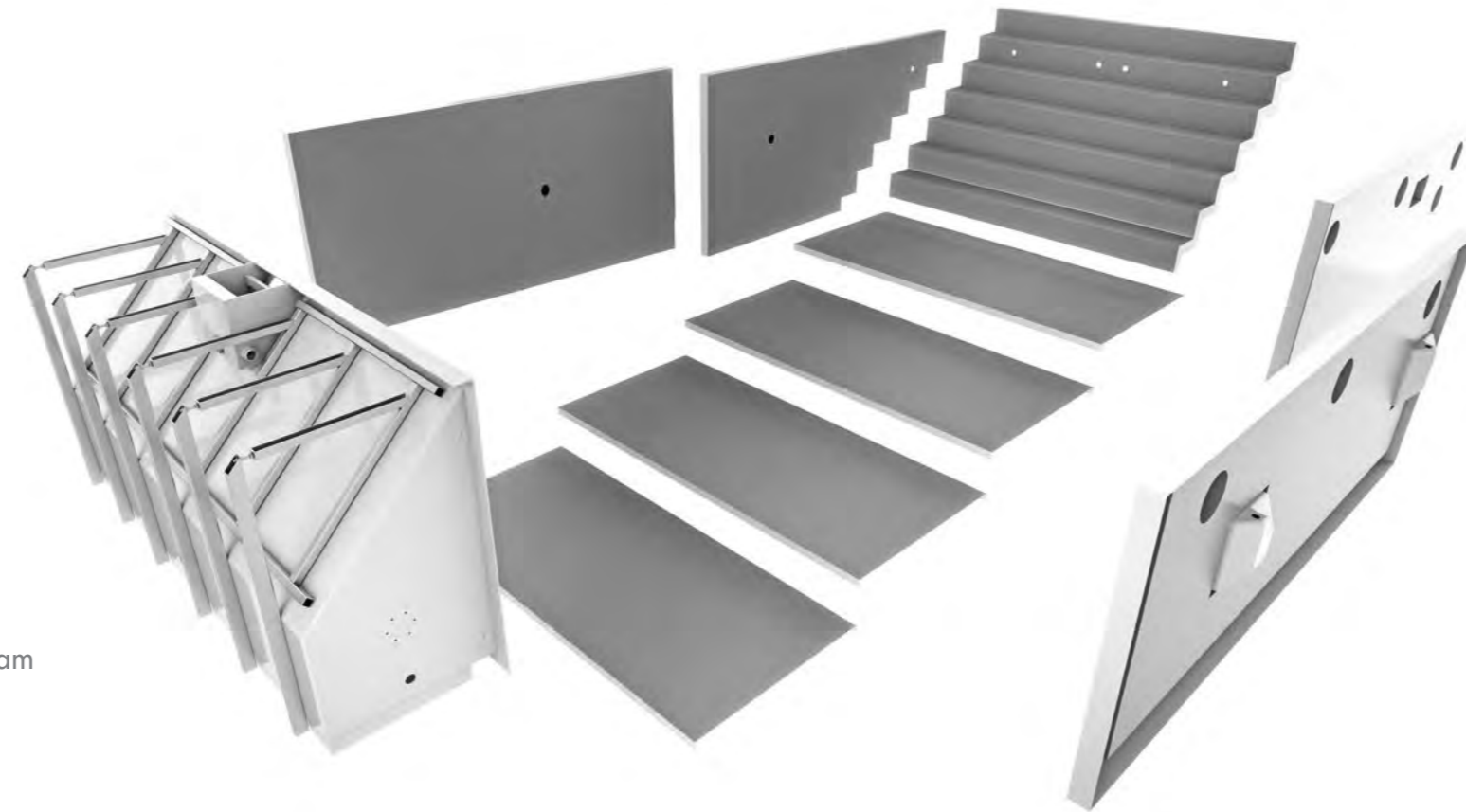


2 Shell elements

The individual production method of the MLine pool is achieved by fabricating panels which are used to assemble the pool shell. These panels are custom-made in the required sizes. Moulded parts are available for functional elements such as steps, roller shutter niche and overflow channels.

3 One-piece shell without mosaic

Each element will be individually tailored for your pool, assembled into a pool shell and then reinforced with fibreglass again. This permanently and homogenously seals the joints between the panels.



4 Applying the glass mosaic

Now, the pool surface is covered with glass mosaic. Jets, nozzles and pool lights are installed in a way that allows them to blend smoothly into the tiling pattern of the pool surface.

Planning advantages

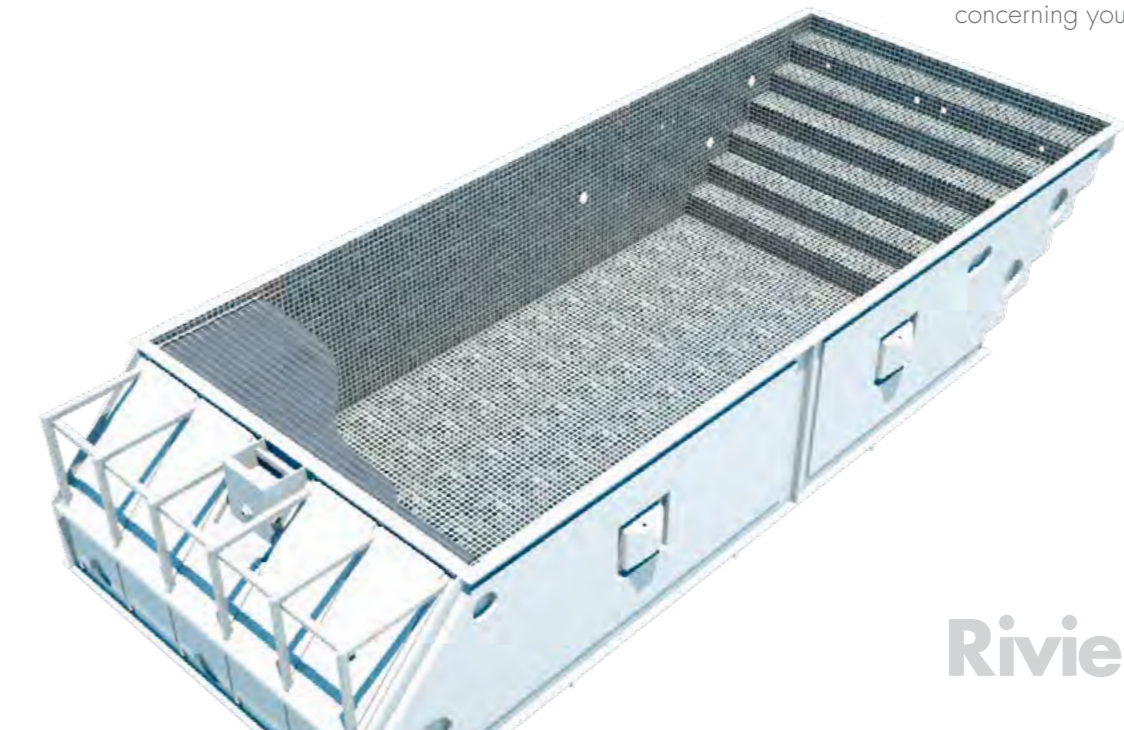
- Strictly angular elements are ideal for modern mosaic designs
- A wide range of prefabricated elements are available for modular planning and design
- Standard moulded parts such as, e.g. reclining zones or can be manufactured individually.
- More than 50 years of experience in swimming pool design for your personal pool project!

Manufacturing advantages

- The swimming pools are completely prefabricated in our factory
- Pools up to a size of 5 m x 15 m can be delivered in one piece
- Extremely short manufacturing time. You receive the finished tiled pool with integrated fitted parts
- Related trades such as the trench excavation, filtration technology, etc. can be precisely prepared

Our promise to you:

- We know every single piece that has been installed in your pool inside and out. Therefore, we can assure you that visual appearance as well as functionality of your MLine pool will last for many, many years
- Our pro-partners guarantee a professional and impeccable on-site service. Whether for the care and maintenance of the filter technology, winterising your pool or even the smallest of questions: they are happy to assist you with everything concerning your personal pool project



The construction



The pool is delivered to your location with a special transporter, either upright or on its base. Pools in segments are also possible - the flange is reworked on site with mosaic.

The pool arrives fully tiled at your location.



TRANSPORT AND INSTALLATION

The mosaic pool is transported to you by a special transporter; a crane organised by your pool dealer places the MLine pool in the excavation pit.

The pool is set on the prepared foundation raft and backfilled with lean-mixed concrete as the water level rises.

For indoor pools, a self-supporting structure is simply placed on the existing foundation raft. The pool equipment and technology are installed at the same time. Your RivieraPool will be ready for your first swim in just a few days!

ECONOMICAL & SAFE

Your RivieraPool is very economical. The insulated core in the walls and floor (sandwich construction with PU foam core "Thermoblock") keeps the heat inside the pool. Very few other conventional pool constructions can offer such well-insulated wall thicknesses. The solar cover not only insulates the water surface, it also transfers additional heat to the pool. Furthermore, the cover enhances the safety aspect of your pool. It prevents light from entering the water and thus also the growth of algae. An optional integrated safety ledge prevents the covers from sinking when under load, ensuring that your pool is securely closed.

ROBUST & DURABLE

RivieraPools are made from high-quality epoxy acrylate using fibre composite manufacturing techniques just like wind turbines or aircrafts. The extreme stability of fibreglass combined with the chemical resistance of epoxy acrylate guarantee excellent weather resistance and temperature adaptability, and ensure a long service life. Our pools are provided with a 20-year structural warranty, a 10-year delamination and blistering warranty. A 5-year warranty on built-in components and pipework, 5 years on tiled surface finish and a 2-year warranty on electrical components such as pumps, motors and heaters.

Applies across the European Union to every private first-time buyer of a RivieraPool prefabricated swimming pool



A 20-year warranty on water tightness of the fibreglass pool shell.



Aktives Mitglied in der Arbeitsgemeinschaft Verstärkte Kunststoffe - Technische Vereinigung e.V. (AVK-TV)

Active member of the AVK-TV (Federation of Reinforced Plastics)

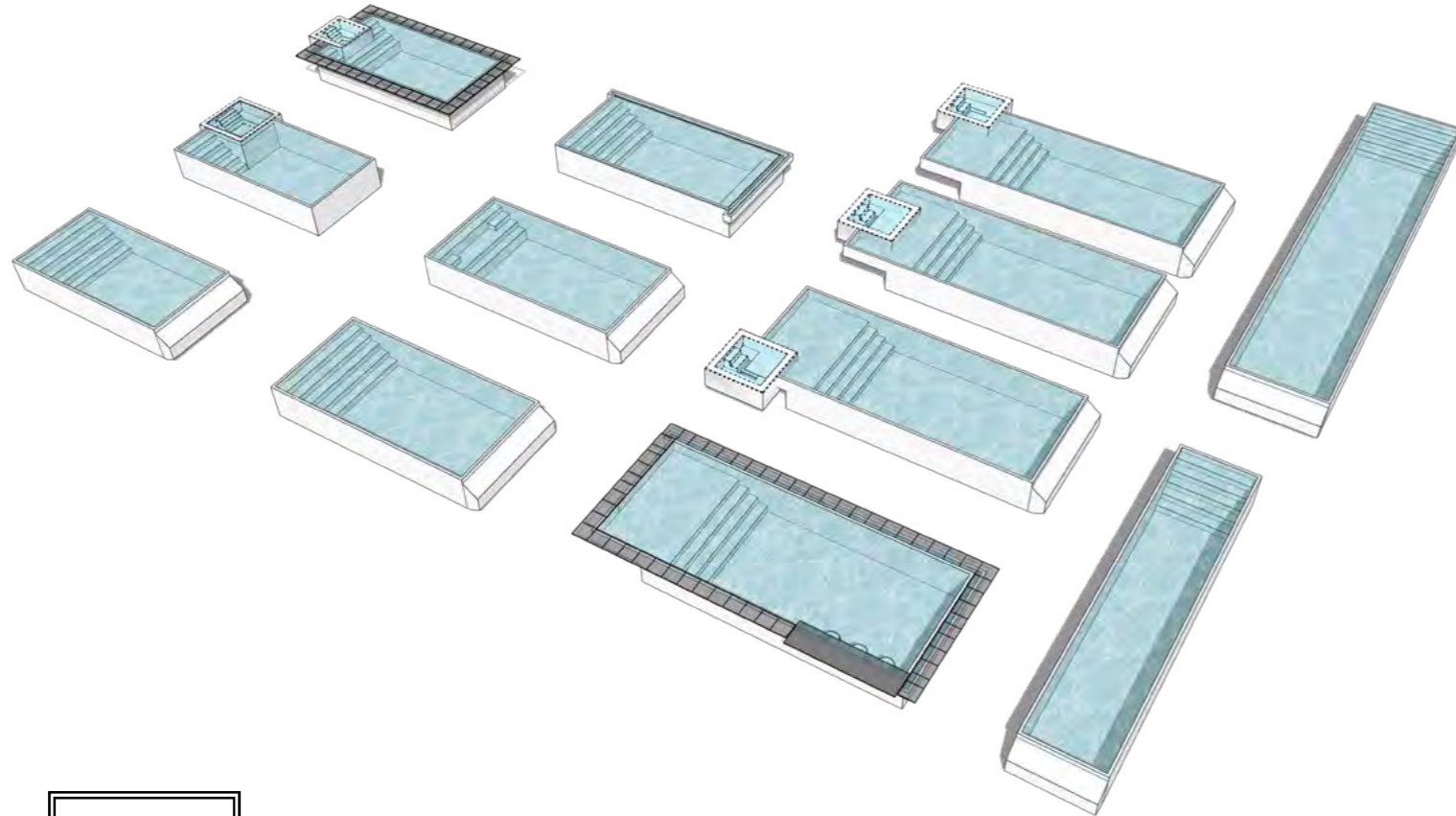


RivieraPool®

SYSTEM OPTIONS

Our series offers a variety of options to create a unique pool design whilst simultaneously benefitting from the advantages of a prefabricated kit. Choose your entry step, roller shutter technology, pool shape and size and skimmer or overflow system. Personalise your pool with your preferred mosaic, lighting and technical equipment.

All of these details are defined in an on-site planning meeting. Your pool is manufactured and fully equipped at the factory. It is delivered in one piece and will be ready to use in just a few days.



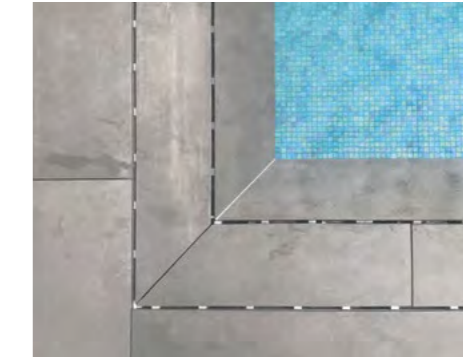
SKIMMER

If you want your terrace to float above the water surface, a skimmer pool with a high water level is the right choice. The overhanging coping stone conceals the pool edge above the water level. The water surface appears higher. A short construction time, the effective technical effort of the installation, and a fair price are the advantages of a skimmer pool.



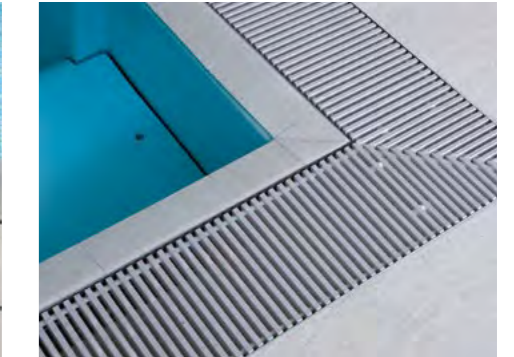
INFINITY CHANNEL

The infinity channel, also called “vanishing edge”, creates the stunning effect of letting the water surface disappear into the horizon. No channel or surfaces interrupt your view of the surrounding landscape. Infinity channels are often used on slopes or hillsides to enable breathtaking views of the valley below. They are also a great choice for terraced pools, perfectly highlighting the different levels. Using an infinity channel on each side of the pool even intensifies the effect. The other sides of the pool walls are usually skimmer walls with a high water level and overhanging coping stones.



CONCEALED OVERFLOW CHANNEL

Would you like the water surface to be embedded into its surroundings like a mirror? Then we recommend the MLine pool with (stone-) covered overflow channel, where the water runs over the top edge of the pool into the channel. The design of the channel allows the terrace tiles to extend over the edge of the pool and onto the pool walls, so that the tiling appears to continue under the water. The capstone has two openings for water intake and can easily be removed for cleaning purposes.



OVERFLOW CHANNEL WITH COVER GRATING

You can also add an elegant covering grate to your overflow channel, an option that is compulsory for commercial pools. This grate is extremely splashproof and can easily be removed for cleaning purposes. Meanwhile, there are modern overflow channel covers that can be covered with tiles. This results in a robust channel grating but with an individual look.

Roller shutter solutions

Roller shutter niche

The roller shutter is installed below the coping stones and behind the pool walls.

- An optically very subtle solution.
- The closed, straight front edge of the pool is perfect for counter current swimming.
- The roller shutter rises from a narrow slot below the water level. A step on the niche floor facilitates pool cleaning.
- The counter current return suction can be ideally "concealed" in the niche creating a well-balanced and calm visual appearance.

Shallow water bench

The roller shutter is integrated beneath the bench, installed at about 23 cm below the water surface. This design enables comfortable sitting or lying in your pool's shallow water zone. In addition, the straight and closed wall beneath the bench is perfect for counter current swimming. The roller shutter is mounted above the pool floor to provide maximum water buoyancy and secure use. The bench is detachable to enable easy access to the roller shutter system.

Inline bench

The roller shutter is mounted beneath a bench installed 60 cm below the water surface. This design allows you to sit comfortably in deep water. Massage jets can be placed at different heights in the rear wall. The bench is detachable to enable easy access to the roller shutter system.

New!

MLine RS

The "MLine RS" entry steps can be combined with all MLine body types: Comfort, Palace or Palace with lounge area. Counter-current systems such as the "Twinjet" or "Trijet" can be integrated on the roller shutter side. The roller shutter support edges on the long sides offer the possibility of installing indirect lighting to create a very special atmosphere.

Safety and energy efficiency

Our slat profiles are available in two different types and grades, made of PVC in colours solar and white or made of extremely durable polycarbonate in colours solar and silver. The RivieraPool "Thermosafe" roller shutter covers are INE tested and certified. They comply with the NF P90-308, the only European security regulation for pool covers. Our polycarbonate profiles are hailproof and included in the Swiss hail protection register. Roller shutters protect against coarse dirt and

evaporation and provide free solar heating. Furthermore, the covers essentially add to your pool's safety. When not in use, the pool can be securely covered and locked via key switch.

... for perfect safety and energy efficiency

Heating with the sun

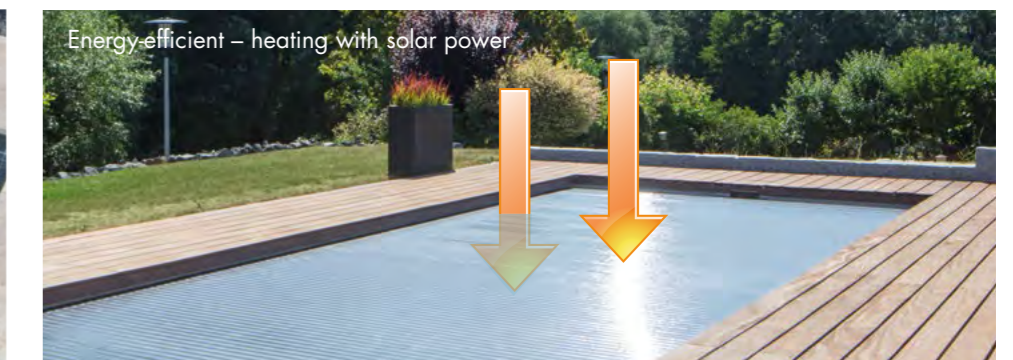
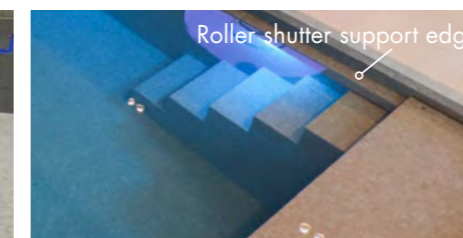
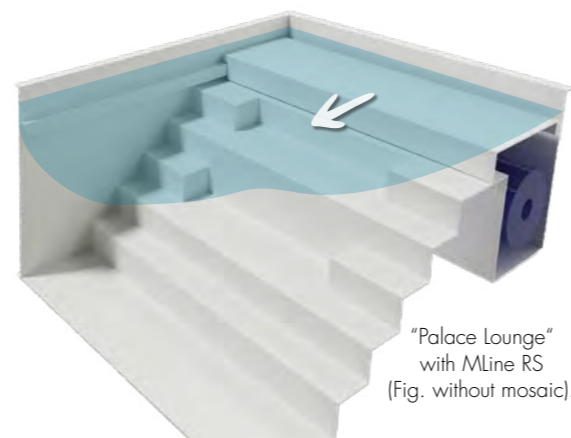
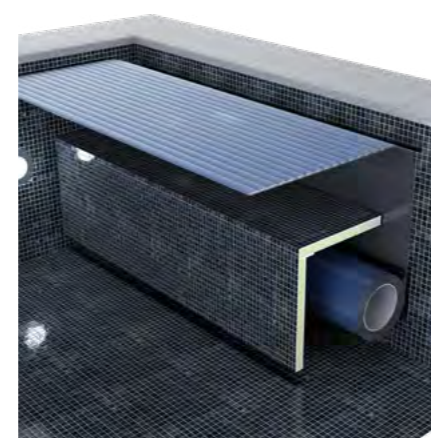
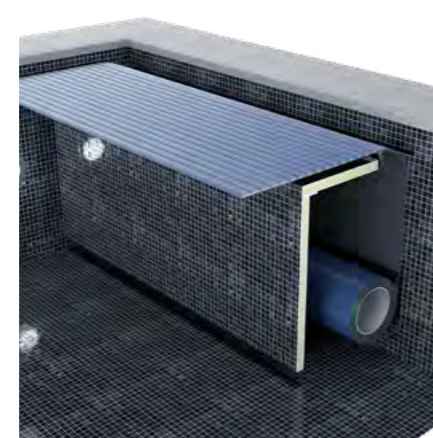
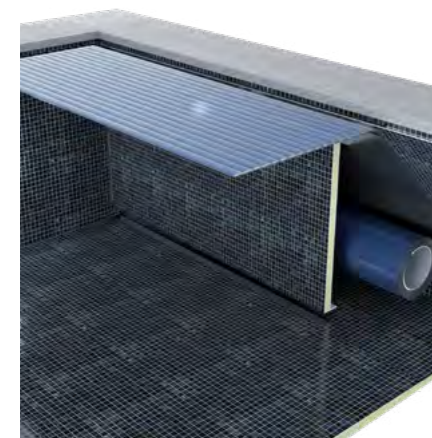
Energy-saving, environmentally friendly and highly efficient. Did you know approximately 80 % of the heat's energy is lost from the water surface?

This is caused by

- evaporation
- convection
- emission

This heat loss can be almost completely prevented by installing a pool cover. Beyond this, solar slats collect and transfer heat from the sun directly into your

pool while it is covered. The water heats up and the slats prevent the heat from escaping. Global radiation data confirms that an average of 160 kW per square metre per month hits the pool surface from May to August. During this period, 100 kW/h per day can be transferred to a covered outdoor swimming pool sized 4 m x 8 m. Works safely and saves money.



RivieraPool®

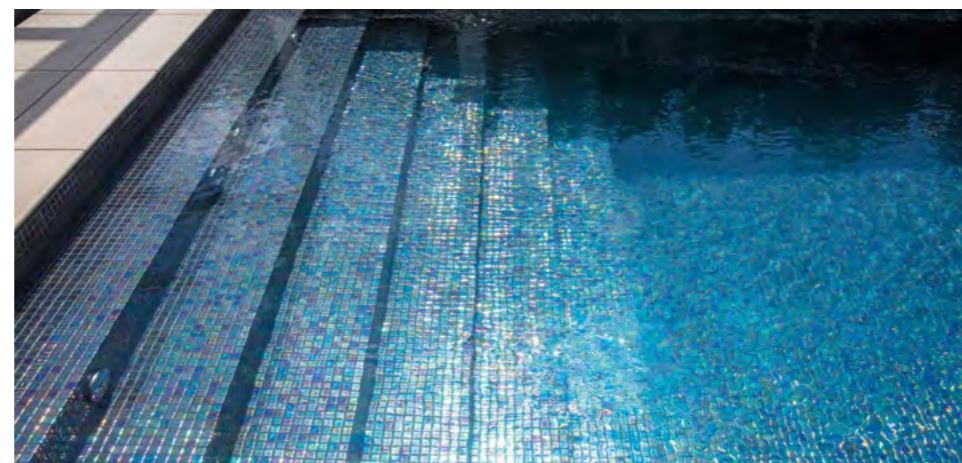
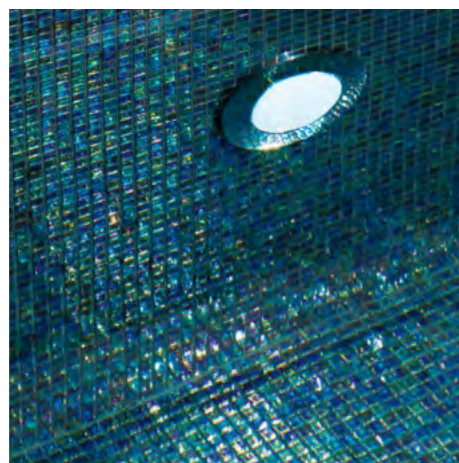
Unlimited variety of design ...

A wide colour selection of mosaics as well as examples of the colour effect can be found under:

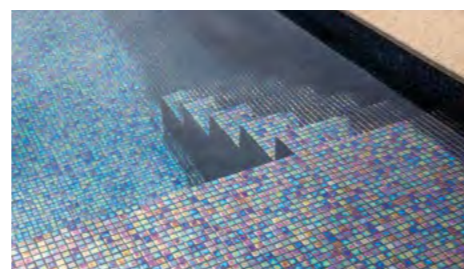


EXCLUSIVE GLASS MOSAIC SURFACES

Glass mosaic is one of the most durable, high-end surfaces available for swimming pool design. The single mosaic tiles have different tones and thus produce a unique reflection of light and colour to your pool, depending on the angle from which you're looking from and the spectral colour hitting the water surface. This result is an infinite number of different colour effects which extensively contribute to the ambience and atmosphere of your indoor or outdoor pool area.



We recommend the Ezarri mosaic collection, one of the most renowned European manufacturers of glass mosaic tiles. The high-quality material offers numerous design options and is easy to handle. Whether you choose the "ZEN" series, which looks very similar to natural stone, or the "IRIS" or "METAL" series with reflective, iridescent effects - you will definitely be impressed.



Water colour effect and mosaic selection



WATERCOLOUR SKY BLUE



PERLA - IRIS



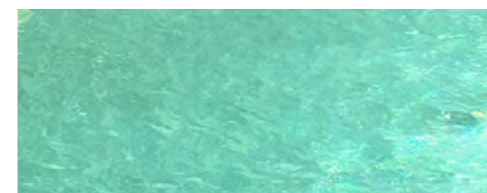
DIAMOND - IRIS



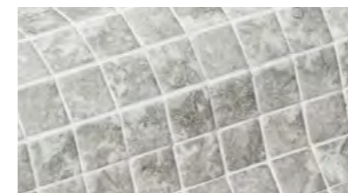
CARRARA- ZEN



NICKEL - IRIS



WATERCOLOUR GREEN



ASH - ZEN



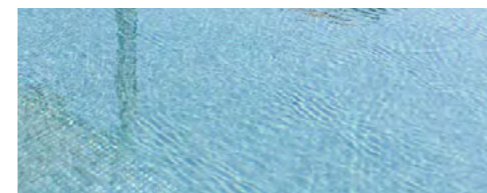
CREAMSTONE - ZEN



MARFIL - IRIS



NACAR - IRIS



WATERCOLOUR GREY-GREEN



FIOR-DI-BOSCO - ZEN



INOX - METAL



SARSEN - ZEN



CUARZO - IRIS



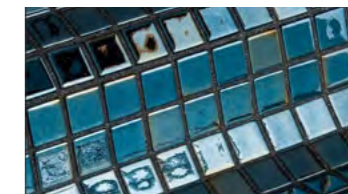
WATERCOLOUR NATURAL LAKE



EBANO - IRIS



CAPRICORN - SPACE



LAVA - METAL



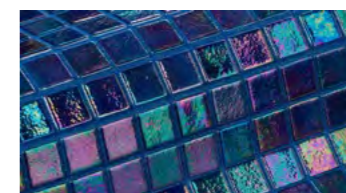
PHYLLITE - ZEN



WATERCOLOUR AQUARELL, INTENSE BLUE



OCEAN - IRIS



ZAFIRO - IRIS



BLUE LAGOON - COCKTAIL



SAGITTARIUS - SPACE

COUNTER CURRENT SYSTEMS



TWINJET 1000

Swimming on the spot in a never ending stream of water: that's what a counter current system offers.

The water gets pushed across the pool through jets by high powered pumps and is then drawn on the opposite side. The result is a strong and smooth current against which you can swim and exercise for as long as you want. Depending on the swimmer's distance to the jets, the current is either more gentle or more challenging.

New! TRIJET

The "Trijet" three-jet counter-swimming system guarantees individual training, fun and wellness. The jets are driven by a 2.6 kW pump unit that switches on at the touch of a button. With this counter-swimming unit, you can swim on the spot to cover long and enduring distances. You can also practice aqua-jogging - muscles are strengthened, and your fitness is improved.

New! TURBOJET

This high-quality turbine unit, with its high-quality stainless steel fascia, is not only an eye-catcher in its elegant, compact design but is also easy to operate. With 3-stage power control, the unit adapts to any swimming style. It's a powerful, voluminous flow through the entire pool for effective endurance training or relaxed swimming to relieve stress. The wide jet flow offers you a completely new swimming experience.

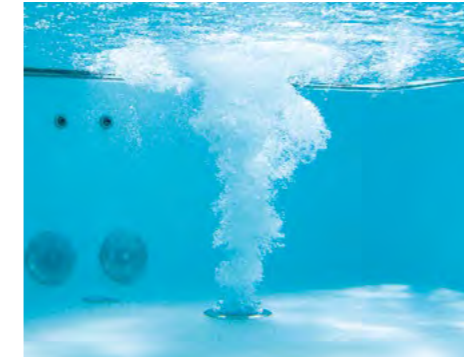
MASSAGE JET SYSTEM

HEALTHSTREAM

The Healthstream massage jets provide a powerful and targeted body massage in the pool. Four massage jets are built into the pool wall at different heights for a selective massage of the foot and leg area, the thighs and the lower back. It is also possible to add air to the water massage jet. The intake nozzles are invisibly hidden in the roller shutter shaft.

This feature adds a complete massage station to the pool. Ideal for use when your partner swims against the counter-current unit, and you prefer to massage your body.

ATMOSPHERIC AMBIENCE THROUGH LIGHT ...



AIR-BUBBLE PLATE

The air bubble plate is installed at the bottom of the pool or in the seating area. Countless air bubbles provide a gentle massage and make your body float in the water. The tingling feeling of massage and simultaneous relaxation brings your body and mind into harmony. Air bubbles have a soothing and gentle effect on the skin, tissues, and nerves. The gentle bubbling of the air stimulates the circulation of muscles and joints. It banishes stress and busyness - strength, stamina, and composure return.



LIGHTING

When it comes to atmosphere and ambience, the pool's lighting is the centrepiece of your indoor or outdoor swimming area. Warm and soft light not only has an inviting and calming effect, it also reflects every movement of the water to the pool's surroundings, for example onto a wall. Well-planned lighting can turn your swimming area into an atmospheric lagoon. Use lighting to highlight individual parts of your pool. Illuminated steps create interesting light and shadow effects, illuminated inlet nozzles accentuate the balanced water flow, just like a stream. You may also use indirect lighting from a roller shutter niche or from beneath a coping stone. And how



about adding some colour? Our product range includes warm-white LED lighting as well as coloured lighting to create different colour temperatures and play of light. The desired programme can be switched on via remote control. Underwater lighting has numerous advantages: it provides a high standard of safety when swimming at night. Small spotlights in the staircase area allow safe entry and exit regardless of the time of day. Individual illumination of the roller shutter support edge creates a very special atmosphere. Light has a positive emotional effect - nothing entices more seductively than a pool skilfully placed in the right light at night.



With the right technique, the water will appear very special. This is how water is magically staged and turns a balmy summer night into an unforgettable highlight

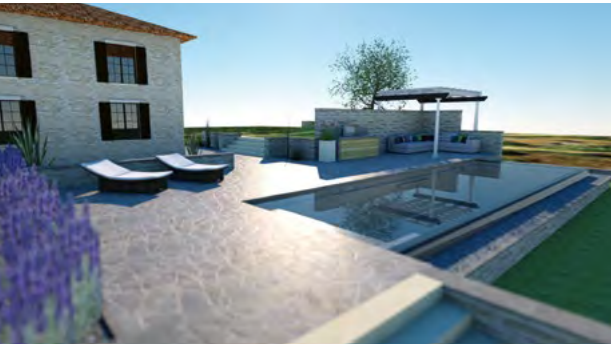
Planning your wellness area

We create a drawing of the pool with all the details. This drawing can be used for costing, determining the circuit points and in-depth designing. We will provide your architect with the drawings in the desired file format. Thus, all details and features can be easily mounted and visualised. Collect ideas for your future dream swimming pool. All you need is the floor plan of the indoor pool and the desired attractions,

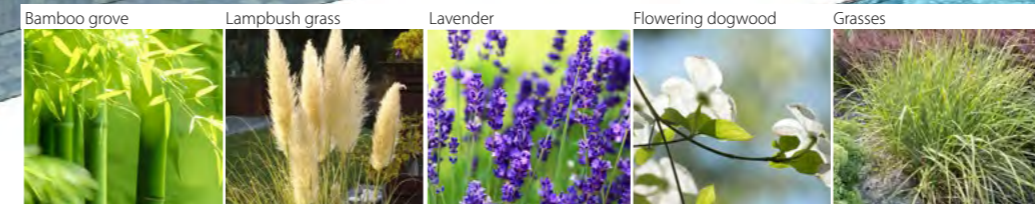
such as a sauna, whirlpool, lounge, etc. The possibilities are endless. Create a rough concept with which you can approach your architect. Visualise your indoor swimming pool so that your planning comes to life. This way, many details can be planned well in advance.



Have a plan...

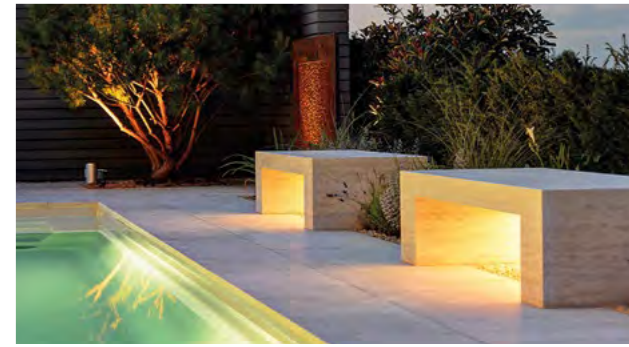


Your planner can come up with designs and graphic renderings using texture and light based on your garden layout. Often, even a sketch and "list of ingredients" can serve as a mood board. Ask your planner about this.



Computer modelling lets you generate various angles of view. This ensures the maximum security of design. These plans can be implemented by your local gardening and landscaping company. And the costs? Always cheaper than the annoyance of getting it wrong.

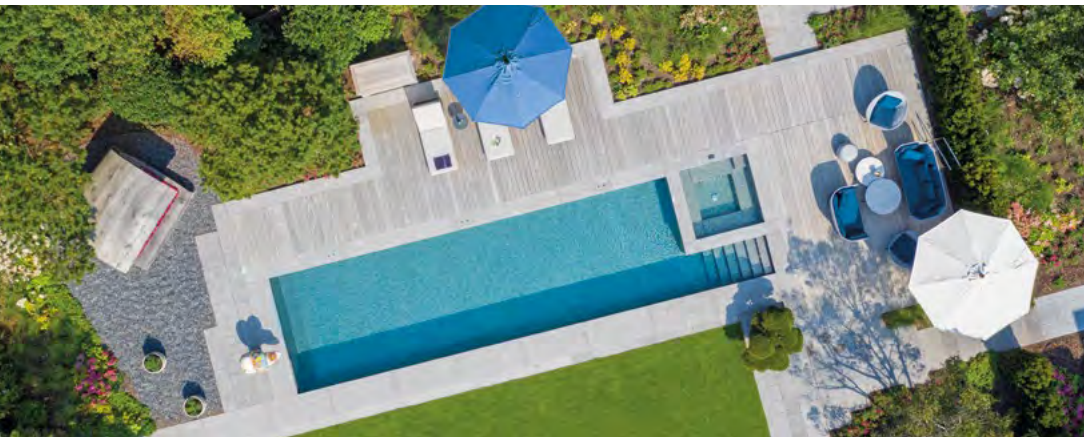
... living by water.



Start the realization of your pool dream with professional planning. This is the only way to take into account all the details that will be so important to you later.

RivieraPool®

Plan your dreams with us ...



www.rivierapool.com

RivieraPool®

One of the leading
German manufacturers
of prefabricated swimming
pools and whirlpools.
Member in the BSW



RivieraPool Fertigschwimmbad GmbH • Klöcknerstr. 2 • D-49744 Geeste-Dalum • Tel. +49 5937 660 • E-Mail: info@rivierapool.com

Date: 09/2021