

## VALVES

### SIDE MOUNT

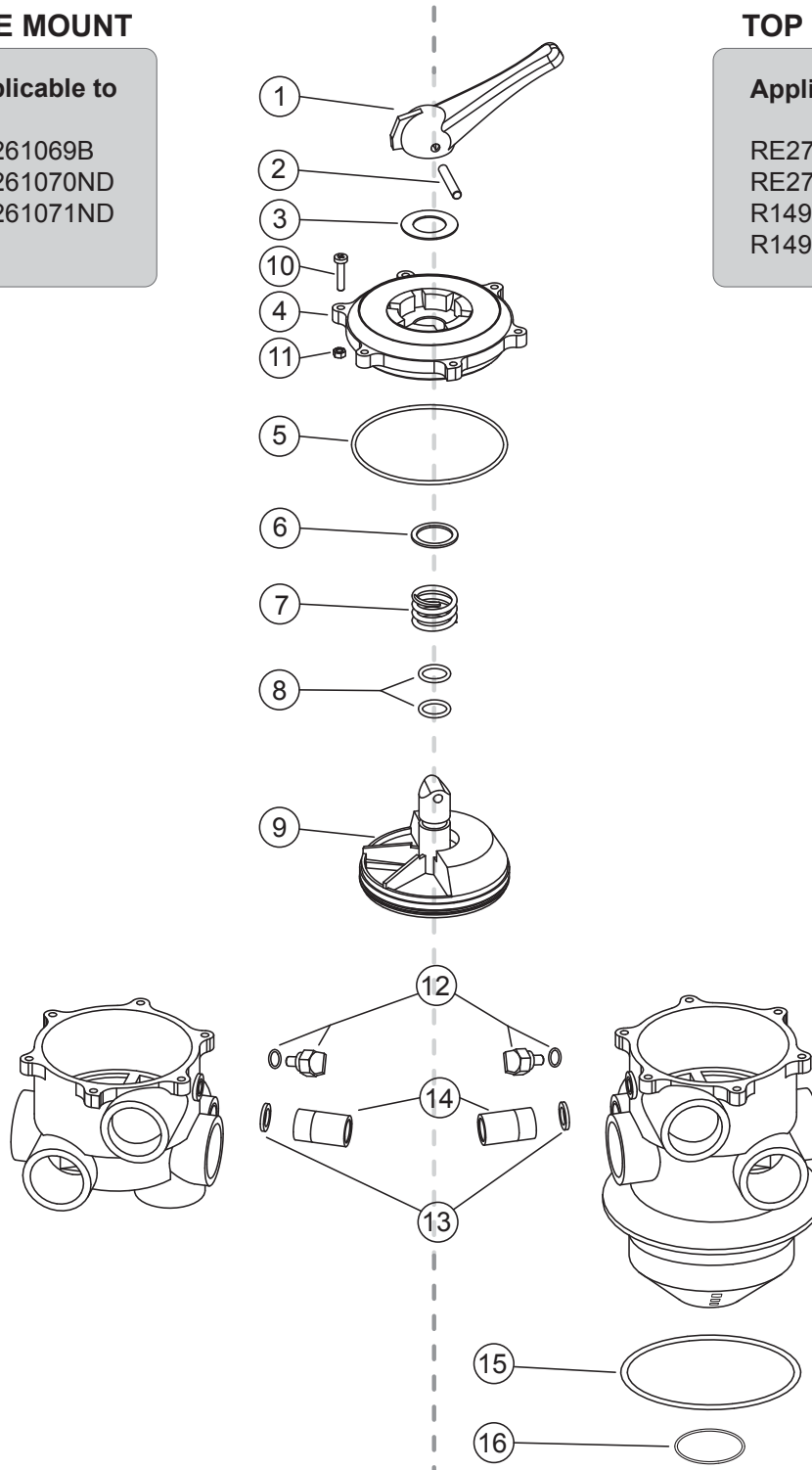
#### Applicable to

RE261069B  
RE261070ND  
RE261071ND

### TOP MOUNT

#### Applicable to

RE272026ND  
RE272029ND  
R14965TM10  
R14965TM20



## VALVES

### Replacement Parts

No.	Part No.	Description	Part No. Includes
1	RGA10E01	Valve Handle	1
2	RGA10E02	Pin Handle Valve	1
3	RGA10E03	Ring Handle Valve	1
4	RGB10E06	Cover 1 1/2" Valve - OLD STYLE	1
	RGE20E06	Cover 2" Valve - OLD STYLE	1
	RGB10E06ND	Cover 1 1/2" Valve - NEW STYLE	1
	RGE20E06ND	Cover 2" Valve - NEW STYLE	1
5	RGB10E07	Cover O-ring 1 1/2" Valve	1
	RGC20E07	Cover O-ring 2" Valve	1
6	RGA10E08	Washer Valve	1
7	RGA10E09	Spring Valve	1
8	RGA10E10	Axle O-Ring Valve	2
9	RGB10E13	Rotor 1 1/2" Valve - 'molded in' star gasket	1
	RGC20E13	Rotor 2" Valve - 'molded in' star gasket	1
10	RGA10E04	Screw Valve	6
11	RGA10E14	Nut Valve	6
12	RGA10E17	Gauge Nut with O-Ring	1
13	RGD20E15	O-Ring Sight Glass	1
14	RGD20E16	Sight Glass	1
15	R281008	O-Ring 1 1/2" Valve	1
	R250001	O-Ring 2" Valve	1
16	R281018	O-Ring 1 1/2" Valve	1
	R281009	O-Ring 2" Valve	1
<b>Not Shown</b>			
	RGB10E12	Star Gasket 1 1/2" Valve - Applicable to valves prior to 2007	1
	RGC20E12	Star Gasket 2" Valve - Applicable to valves prior to 2007	1
	R152046	Manometer - Pressure Gauge (back connection)	1
	R152047	Manometer - Pressure Gauge (bottom connection)	1
<b>Assemblies</b>			
	G-COV15-SM	Cover Assembly 1 1/2" Valve (Incl. Partn° 1 to 11) - OLD STYLE	1
	G-COV20-SM	Cover Assembly 2" Valve (Incl. Partn° 1 to 11) - OLD STYLE	1
	G-COV15-SMND	Cover Assembly 1 1/2" Valve (Incl. Partn° 1 to 11) - NEW STYLE	1
	G-COV20-SMND	Cover Assembly 2" Valve (Incl. Partn° 1 to 11) - NEW STYLE	1

Applicable to all valves, except Sta-Rite Valve R14965-TMKH