

PRICELIST 2022

Valid from 01/01/22 (until revoked)
Sales prices in Euro excl. VAT.

rivierapool.com

P R E F A B R I C A T E D S W I M M I N G P O O L S

RivieraPool[®]

PREFABRICATED SWIMMING POOLS • WHIRLPOOLS

About our pools

RivieraPool-swimming pools are made of Epoxy-Acrylate, a material that, among other applications, has been used for many years in the marine industry, due to its high degree of strength and flexibility. It is particularly suitable for swimming pool production as it can be shaped to form fixtures for technical components in the pool. Riviera pools can therefore be equipped with recesses for the floor drain, installation shaft, support edge for roller shutters and different styles of pool steps. The swimming pool shell is a sandwich construction, reinforced with PU foam. This ensures that the pool surfaces remain smooth and rigid and are insulated against temperature losses.

The prefabricated swimming pool shell enables easy transportation due to the low structural weight. Your pool is a high-quality product distinguished by unique characteristics. It resists UV light and deformation and is only mildly sensitive to temperature changes. All component fittings are made from high quality materials.

Quality:

Being member of the AVK (Federation of Reinforced Plastics) the Rengers group adheres to production and test criteria of the AVK and thus provides a best possible resistance of surfaces.

Distribution channels:

All our swimming pool systems are distributed exclusively through specialist retailers who, with their specialised planning and installation personnel, are serious partners for customers and architects.

Installation costs:

Prices for on-site installation and the required installation material are not included in this price list, as these services are provided by a specialised company and invoiced separately.

Transportation costs:

Specified prices are generally ex-works. Shipping and insurance to the limit of the receiver's site accessible to road traffic are included in the transportation costs. Special costs, such as rail transport loading, ferries etc. are borne by the customer. Transportation to the site should be organised on site and is also borne by the customer.

Pricing:

Prices in this list become void with the appearance of a new edition of this list. For all orders the price list valid on that day applies. We guarantee price stability for 4 months after ordering. The listed price valid on the day of delivery is invoiced if the goods are collected later. All prices are sales prices in Euro excl. VAT.

The pool content is rounded up to full m³ and calculated at a water level of 1.42 m. We reserve the right to change technical items without prior announcement to improve the product.



RivieraPool Fertigschwimmbad GmbH
Klöcknerstraße 2, Geeste-Dalum, Germany

Active member
of the AVK-TV
(Federation of reinforced plastics)



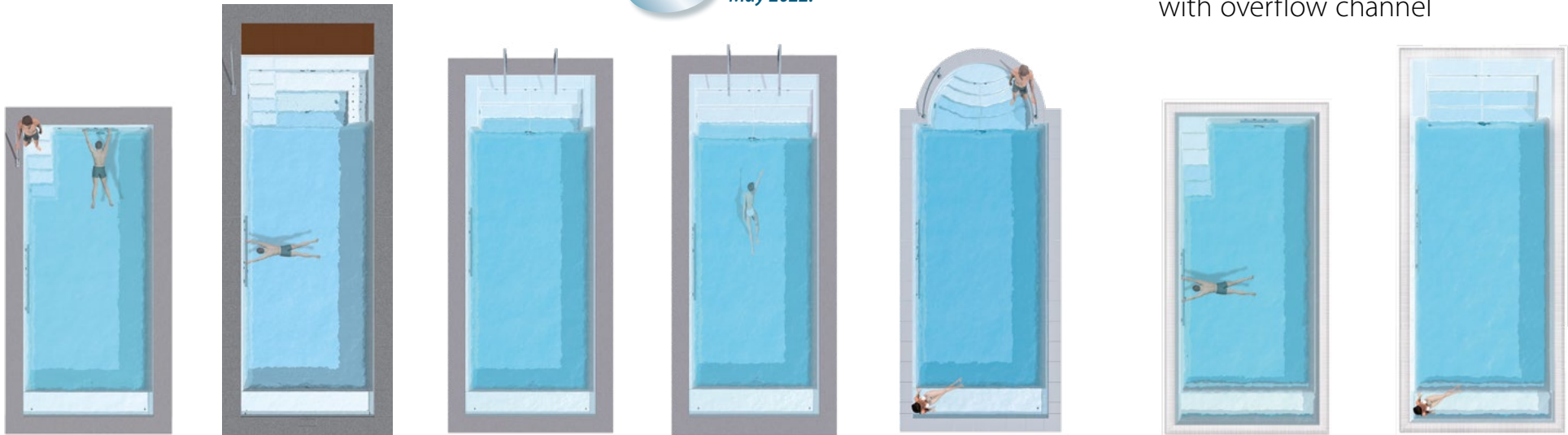
Aktives Mitglied in der
Arbeitsgemeinschaft
Verstärkte Kunststoffe -
Technische Vereinigung e.V.
(AVK-TV)

About our pools	Page 2
Type comparison prefabricated swimming pools	Page 4
Prefabricated swimming pools 270/320/370	
D•Line ANCONA	Page 6
D•Line MODENA	Page 8
D•Line MODENA 550: CLASSIC & SWIM & FUN	Page 10
D•Line LINEAR	Page 12
D•Line LINEAR 2.0	Page 14
D•Line LINEAR RS with integrated roller shutter shaft	Page 16
D•Line LUGANO RS with integrated roller shutter shaft	Page 18
WetLounge® - D•Line ANCONA with Linear RS step-end and integrated roller shutter cover	Page 20
ROM	Page 22
Prefabricated swimming pools with overflow channel	
D•Line ANCONA Ü	Page 24
D•Line LINEAR Ü	Page 26
Optional Extras / Accessories	
Infinity-edge	Page 28
Decor tiles made of Ezarri glass mosaic	Page 28
WetLounge / shallow water areas	Page 28
Handrails	Page 28
Roller shutter Integra D•Lux	Page 29
Roller shutter niche for skimmer pools	Page 29
Water tank	Page 29

Type comparison prefabricated one-piece pools

370 one-piece pool

New Available from May 2022!



D•LINE ANCONA 800 D•LINE MODENA 975 D•LINE LINEAR 945 D•LINE LINEAR 2.0 945 ROM 945 D•LINE ANCONA 800 Ü D•LINE LINEAR 945 Ü

270 one-piece pool

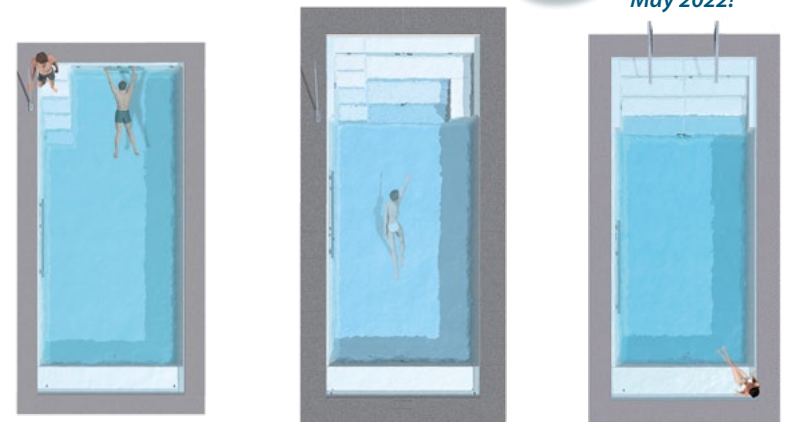
Classic Swim & Fun



ANCONA 550 MODENA 550 MODENA 550 S & F

320 one-piece pool

New Available from May 2022!

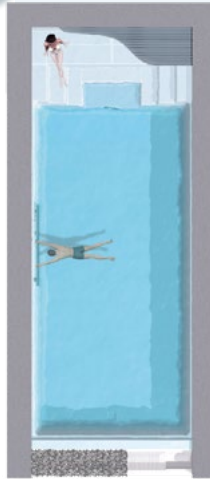


D•LINE ANCONA 320 MODENA 320 D•LINE LINEAR 2.0

RS - Models

- Thermosafe roller shutter cover invisibly integrated in the step end
- additional shallow water lounge area

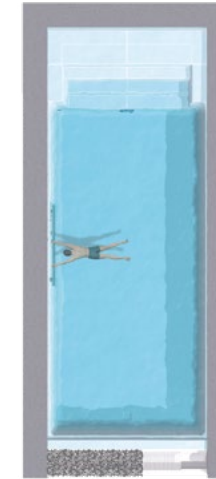
New



D•LINE LUGANO RS



D•LINE LINEAR RS 975



D•LINE LINEAR RS with Infinity-edge

WETLOUNGE

New

Available from May 2022!

WetLounge available in 2m and in 1m length



D•LINE LINEAR RS with WetLounge



WETLOUNGE with ANCONA and LINEAR RS step-end and integrated roller shutter cover

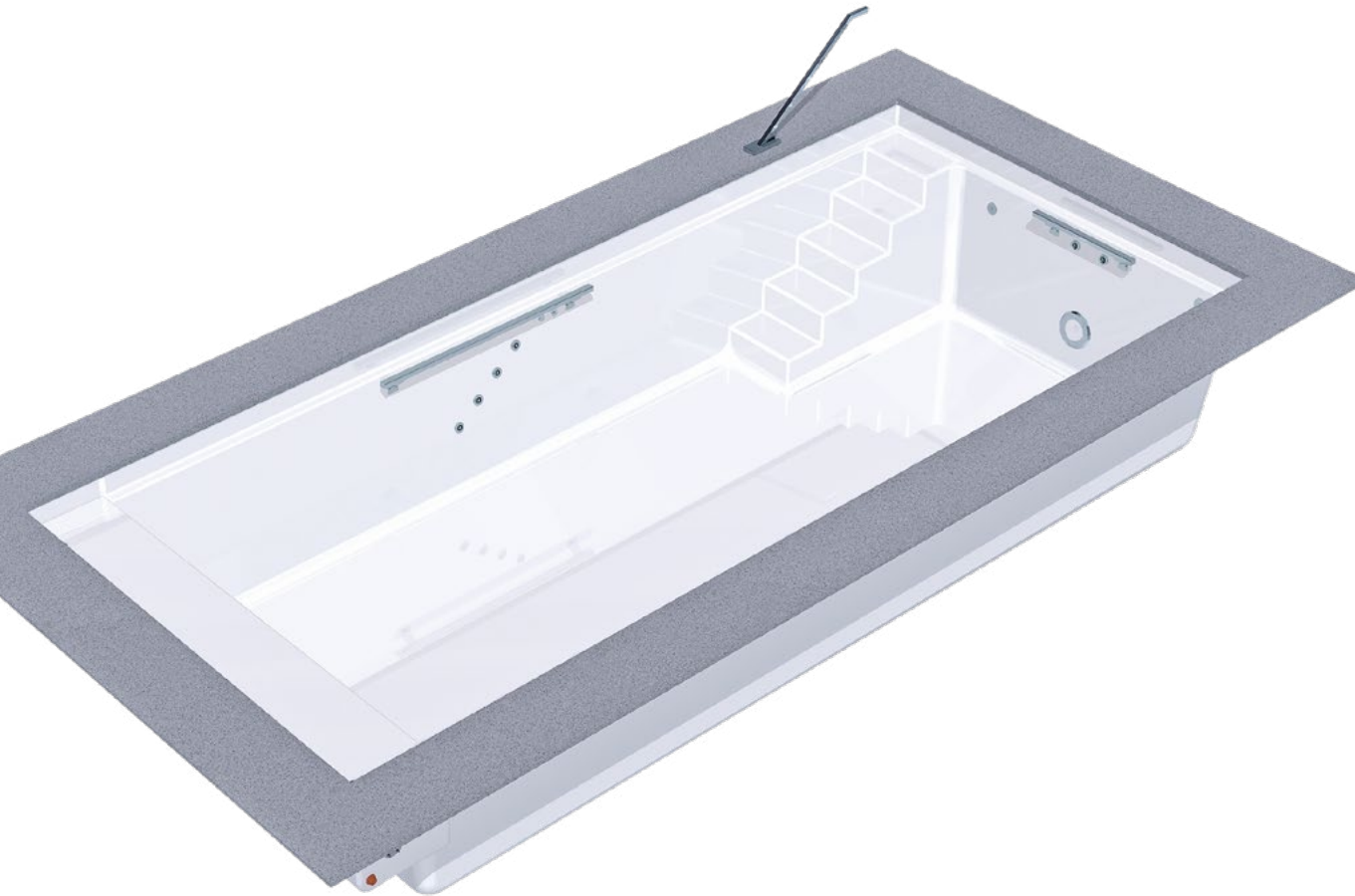
For original drawings, please contact our technical department.

All pools (except 270) are also available in long and short lengths as split versions.

All pools shown are with equipment package and options.

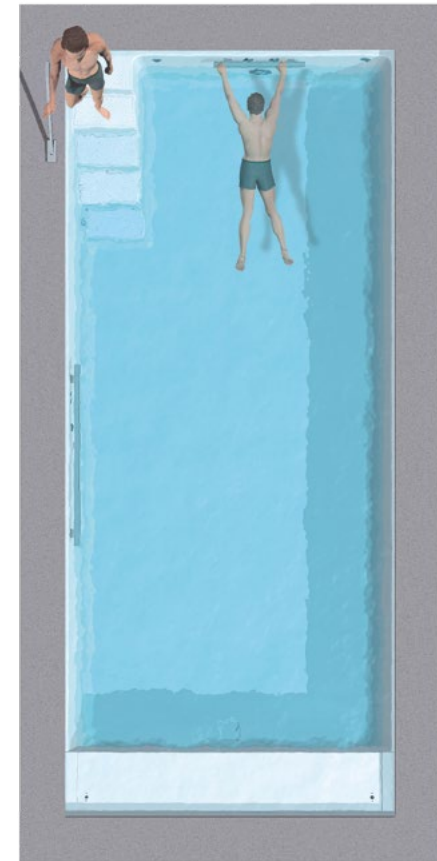
ANCONA – RivieraPool's simple entry step. A timeless design which enhances your swimming pleasure to the maximum. Allowing the whole length of the pool to be used.

Pool step with 5 Steps on the right side with anti-slip profiled surface. Pool with 6 degree wall incline and roll cover ledge with integrated steel beam. Pool with 30 mm insulation in the floor and 20 mm insulation in the walls.



D•Line ANCONA

270 / 320 / 370



D-Line ANCONA

Colours: • plain white

- papyrus (27) • silver-grey (24)
- sea blue (26) **New** • beach (28)

• granicite stone grey

550/270 650/320 800/320 1000/320 * 800/370 1000/370
5,5 x 2,7 x 1,5 m 6,5 x 3,2 x 1,5 m 8 x 3,2 x 1,5 m 10 x 3,2 x 1,5 m 8 x 3,7 x 1,5 m 9,94 x 3,7 x 1,5 m

11.798,32 **14.563,03** **16.533,61** **21.525,21** **22.235,29** **25.210,08**
A Anc 550 010 03 A Anc 650 050 03 A Anc 800 050 03 A Anc 1000 050 03 A Anc 800 010 03 A Anc 1000 010 03
12.151,26 **15.063,03** **17.004,20** **22.172,27** **22.907,56** **25.966,39**
A Anc 550 010 .. A Anc 650 050 .. A Anc 800 050 .. A Anc 1000 050 .. A Anc 800 010 .. A Anc 1000 010 ..
13.924,37 **17.319,33** **19.563,03** **25.823,53** **26.336,13** **29.861,34**
A Anc 550 010 22 A Anc 650 050 22 A Anc 800 050 22 A Anc 1000 050 22 A Anc 800 010 22 A Anc 1000 010 22

EQUIPMENT PACKAGE

Water Content m³

18 18 32 41 37 47

1 Skimmer with water level controller (8 cm), 2 (4) inlet jets, 1 wall low level suction, 1 bottom outlet sump with cover, 1 underwater light, LED white, with transformer

2.605,04 **2.605,04** **2.605,04** **2.605,04** **2.605,04** **2.907,56**
3 540 505 3 540 505 3 540 505 3 540 505 3 540 505 3 540 515

Additional underwater light with screwed-on red brass niche, 100 VA transformer

957,98 **957,98** **957,98** **957,98** **957,98** **957,98**
A 3 531 355 A 3 531 355 A 3 531 355 A 3 531 355 A 3 531 355 A 3 531 355

ACCESSORIES

Decor tiles made of Ezarri glass mosaic, series „Zen“ or „Iris“, installed and grouted at the factory. A 3 916 360

1.516,02 **1.793,34** **2.070,66** **2.440,42** **2.163,10** **2.532,86**
16,4 m 19,4 m 22,4 m 26,4 m 23,4 m 27,4 m

Coping Stones granite, grey, 60 x 60 x 6.3 cm, with overhanging nose mottled surface, cut out for the fiberglass skimmer lid

4.075,63 **4.264,71** **4.869,75** **5.474,79** **5.071,43** **5.474,79**
A 3 025 050 A 3 025 000 A 3 025 025 A 3 025 148 A 3 025 130 A 3 025 142

Stainless steel grabrail, per pair, polished

1.109,24 **1.109,24** **1.109,24** **1.109,24** **1.109,24** **1.109,24**
A 2 302 030 A 2 302 030 A 2 302 030 A 2 302 030 A 2 302 030 A 2 302 030

2 underwater lights, LED white, with transformer

1.092,44 **1.092,44** **1.092,44** **1.092,44** **1.092,44** **1.092,44**
A 3 202 080 A 3 202 080 A 3 202 080 A 3 202 080 A 3 202 080 A 3 202 080

Twinjet counter current unit, double jet system, **Qmax 60 m³** (for pools with roller shutter shaft)

6.088,24 **6.088,24** **6.088,24** **6.088,24** **6.088,24** **6.088,24**
B 3 590 067 B 3 590 067 B 3 590 067 B 3 590 067 B 3 590 067 B 3 590 067

Safety suction fittings for pools without roller shutter shaft according to DIN EN 16 713 (for pools without roller shutter shaft). **2 x 2 ½"**, suction grille ø350 mm, Qmax = **52,7 m³/h**, additional price

836,13 **836,13** **836,13** **836,13** **836,13** **836,13**
B 3 590 250 B 3 590 250 B 3 590 250 B 3 590 250 B 3 590 250 B 3 590 250

Trijet counter current unit, three jet system, Qmax **90 m³** (for pools with roller shutter shaft)

Alternatives on request.
Example consists of:

8.705,89 **8.705,89** **8.705,89** **8.705,89** **8.705,89** **8.705,89**
B 3 591 121 + B 3 591 110 B 3 591 121 + B 3 591 110 B 3 591 121 + B 3 591 110 B 3 591 121 + B 3 591 110 B 3 591 121 + B 3 591 110 B 3 591 121 + B 3 591 110

Safety suction fittings for pools without roller shutter shaft according to DIN EN 16 713

(for pools without roller shutter shaft). **3 x 2 ½"**, suction grille ø350 mm, Qmax = **105,4 m³/h**, additional price

1.029,41 **1.029,41** **1.029,41** **1.029,41** **1.029,41** **1.029,41**
B 3 590 260 B 3 590 260 B 3 590 260 B 3 590 260 B 3 590 260 B 3 590 260

Turbojet turbine unit, Qmax approx. **300 m³/h**, incl. technical shaft

Colour: black (00) or white (05)

12.563,03 **12.563,03** **12.563,03** **12.563,03** **12.563,03** **12.563,03**
A 3 591 3.. A 3 591 3.. A 3 591 3.. A 3 591 3.. A 3 591 3.. A 3 591 3..

UNDERGROUND ROLLER SHUTTER COVER

Roller shutter shaft Integra 2-13 for an extra high water level, extends the pool by 48 cm, with hinged seat bench and 2 inlet nozzles, Additional water content: 270: 1,2 m³ / 320: 1,6 m³ / 370: 1,9 m³

3.978,99 **4.235,29** **4.235,29** **4.235,29** **4.798,32** **4.798,32**
A 2 200 640 A 2 200 620 A 2 200 620 A 2 200 620 A 2 200 610 A 2 200 610

Electrical roll-up fixture, drive shaft made from composite material with internal motor with 10 m cable and stainless steel wall mount, installed in the factory; incl. control box and **key switch**

6.075,63 **6.327,73** **6.327,73** **6.327,73** **6.483,19** **6.483,19**
A 22 004 340 A 22 004 320 A 22 004 320 A 22 004 320 A 22 004 310 A 22 004 310

Roller shutter cover, 6 cm slat width

Cover: **Polycarbonate solar** version

3.508,40 **4.264,71** **5.399,16** **6.924,37** **6.550,42** **8.021,01**
A 01-04 20 211 A 01-04 02 201 A 01-04 02 204 A 01-04 02 206 A 01-04 03 204 A 01-04 03 206

Polycarbonate solar, version silver vaporized

4.029,41 **4.907,56** **6.201,68** **7.957,98** **7.542,02** **9.210,08**
A 01-05 20 211 A 01-05 02 201 A 01-05 02 204 A 01-05 02 206 A 01-05 03 204 A 01-05 03 206

PVC solar version

2.605,04 **3.193,28** **4.033,61** **5.205,88** **4.911,76** **6.008,40**
A 01-02 20 211 A 01-02 02 201 A 01-02 02 204 A 01-02 02 206 A 01-02 03 204 A 01-02 03 206

PVC white (01) / **PVC** grey (03)

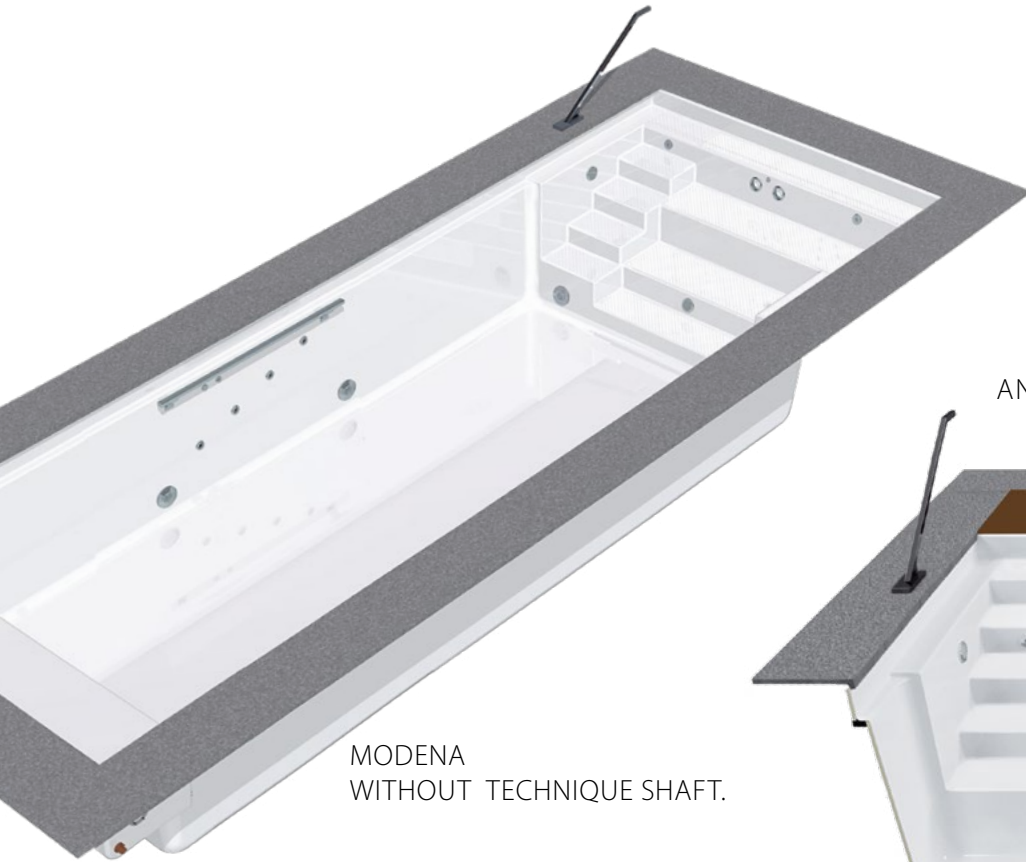
1.848,74 **2.180,67** **2.638,66** **3.273,11** **3.130,25** **3.802,52**
A 01- .. 20 211 A 01- .. 02 201 A 01- .. 02 204 A 01- .. 02 206 A 01- .. 03 204 A 01- .. 03 206

FREIGHT CHARGES on request

MODENA – Offering a contemporary design of massage seating bench and relaxation area for all the whole family to enjoy. Integrating the elegant entry step into one side.

One-piece pool made out of Epoxy-acrylate, sandwich construction with 20 mm insulation in walls and 30 mm in the floor. Pool step with 6 treads on the right side with anti-slip profiled surface.

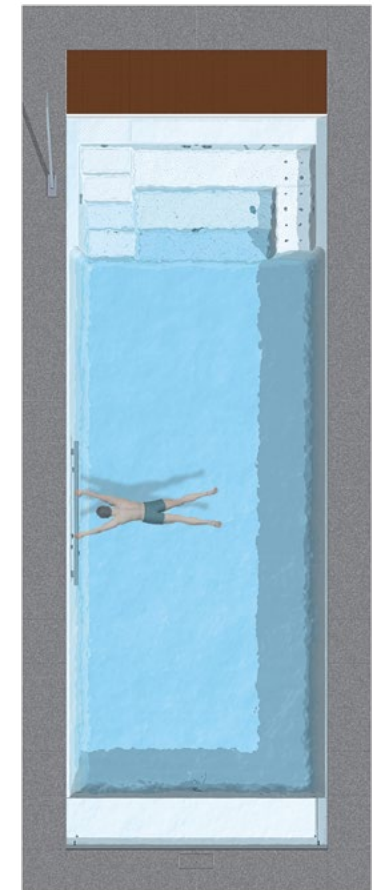
D•LINE MODENA



MODENA
WITHOUT TECHNIQUE SHAFT.



MODENA WITH **FUNPAK 4.2**
AND TECHNIQUE SHAFT (OPTIONAL).



D•LINE MODENA

Colours: • plain white

- papyrus (27) • silver-grey (24)
- sea blue (26) **New** • beach (28)
- granicite stone grey

EQUIPMENT PACKAGE

1 Skimmer with water level controller (8 cm), 2 (4) inlet jets, 1 wall low level suction, 1 bottom outlet sump with cover, 1 underwater light (ø100), LED white, with transformer

Additional underwater light (ø100) with screwed-on niche, 50 VA transformer

FUN PAK 4.2

Technique shaft, laminated to the pool shell with fine wood cover

Flow and massage system with double jet counter current unit, 2 maritim massage jets, 6 Microjets, 1 floor geyser, installed in technique shaft

Ditto, but then for concreting with red brass inlets and PVC pipes

Air massage system, incl. piezo switch, polished, 0,85 kW blower and switchbox

ACCESSORIES

Decor tiles made of glass mosaic, installed and grouted at the factory. Item no. A 3 916 360

Coping Stones granite, grey, 60 x 60 x 6.3 cm, with overhanging nose mottled surface, cut out for the fiberglass skimmer lid

Stainless steel grabrail, per pair, polished

2 underwater lights, LED white, with transformer

Trijet counter current unit, three jet system, Qmax 90 m³ (for pools with roller shutter shaft)

Safety suction fittings for pools without roller shutter shaft according to DIN EN 16 713 (for pools without roller shutter shaft). 2 x 2 1/2", suction grille ø350 mm, Qmax = 52,7 m³/h, additional price

Trijet counter current unit, three jet system, Qmax 90 m³ x 2 1/2", suction grille ø350 mm, Qmax = 105,4 m³/h, additional price. **Plus set of fittings 3 x 2 1/2" (see page 7)** Example consists of:

Turbojet turbine unit, Qmax approx. 300 m³/h, incl. technical shaft. Colour: black (00) or white (05)

UNDERGROUND ROLLER SHUTTER COVER

Roller shutter shaft Integra 2-13, for an extra high water level, extends the pool by 48 cm, with hinged seat bench and 2 inlet nozzles, Additional water content: 320: 1,6 m³ / 370: 1,9 m³

Electrical roll-up fixture, drive shaft made from composite material with internal motor with 10 m cable and stainless steel wall mount, installed in the factory; incl. control box and key switch

Roller shutter cover, 6 cm slat width

Cover: **Polycarbonate solar** version

Polycarbonate solar, version silver vaporized

PVC solar version

PVC white (01) / PVC grey (03)

FREIGHT CHARGES on request

	725/320 7,25 x 3,2 x 1,5	825/320 8,25 x 3,2 x 1,5	775/370 7,75 x 3,7 x 1,5	875/370 8,75 x 3,7 x 1,5	975/370 9,75 x 3,7 x 1,5	1075/370* 10,75 x 3,7 x 1,5	1175/370* 11,75 x 3,7 x 1,5
	15.865,55 A Mod 725 040 03	17.495,80 A Mod 825 040 03	22.508,40 A Mod 775 040 03	23.991,60 A Mod 875 040 03	25.462,18 A Mod 975 040 03	26.945,38 A Mod 1075 040 03	28.424,37 A Mod 1175 040 03
	16.441,18 A Mod 725 040 ..	18.067,23 A Mod 825 040 ..	23.088,24 A Mod 775 040 ..	24.558,82 A Mod 875 040 ..	26.033,61 A Mod 975 040 ..	27.521,01 A Mod 1075 040 ..	29.004,20 A Mod 1175 040 ..
	18.718,49 A Mod 725 040 22	20.584,03 A Mod 825 040 22	25.978,99 A Mod 775 040 22	27.457,98 A Mod 875 040 22	28.932,77 A Mod 975 040 22	30.407,56 A Mod 1075 040 22	31.903,36 A Mod 1175 040 22
EQUIPMENT PACKAGE	Water Content m ³ 26	30	32	37	42	47	52
1 Skimmer with water level controller (8 cm), 2 (4) inlet jets, 1 wall low level suction, 1 bottom outlet sump with cover, 1 underwater light (ø100), LED white, with transformer	2.415,97 3 540 600	2.415,97 3 540 600	2.415,97 3 540 600	2.415,97 3 540 600	2.415,97 3 540 600	2.718,49 3 540 610	2.911,76** 3 540 620
Additional underwater light (ø100) with screwed-on niche, 50 VA transformer	621,85 A 3 531 365	621,85 A 3 531 365	621,85 A 3 531 365	621,85 A 3 531 365	621,85 A 3 531 365	621,85 A 3 531 365	621,85 A 3 531 365
FUN PAK 4.2							
Technique shaft , laminated to the pool shell with fine wood cover	4.525,21 A 2 322 060	4.525,21 A 2 322 060	5.063,03 A 2 322 062	5.063,03 A 2 322 062	5.063,03 A 2 322 062	5.063,03 A 2 322 062	5.063,03 A 2 322 062
Flow and massage system with double jet counter current unit, 2 maritim massage jets, 6 Microjets, 1 floor geyser, installed in technique shaft	8.046,22 A 3 561 280	8.046,22 A 3 561 280	8.046,22 A 3 561 280	8.046,22 A 3 561 280	8.046,22 A 3 561 280	8.046,22 A 3 561 280	8.046,22 A 3 561 280
Ditto, but then for concreting with red brass inlets and PVC pipes	9.789,92 A 3 561 290	9.789,92 A 3 561 290	9.789,92 A 3 561 290	9.789,92 A 3 561 290	9.789,92 A 3 561 290	9.789,92 A 3 561 290	9.789,92 A 3 561 290
Air massage system , incl. piezo switch, polished, 0,85 kW blower and switchbox	3.978,99 A 3 593 110	3.978,99 A 3 593 110	3.978,99 A 3 593 110	3.978,99 A 3 593 110	3.978,99 A 3 593 110	3.978,99 A 3 593 110	3.978,99 A 3 593 110
ACCESSORIES							
Decor tiles made of glass mosaic , installed and grouted at the factory. Item no. A 3 916 360	1.932,00 20,9 m	2.116,88 22,9 m	2.116,88 22,9 m	2.301,76 24,9 m	2.486,64 26,9 m	2.763,96 29,9 m	2.856,40 30,9 m
Coping Stones granite , grey, 60 x 60 x 6.3 cm, with overhanging nose mottled surface, cut out for the fiberglass skimmer lid	4.869,75 A 3 025 120	5.071,43 A 3 025 130	4.869,75 A 3 025 120	5.071,43 A 3 025 130	5.474,79 A 3 025 142	5.878,15 A 3 025 146	6.079,83 A 3 025 162
Stainless steel grabrail , per pair, polished	1.109,24 A 2 302 030	1.109,24 A 2 302 030	1.109,24 A 2 302 030	1.109,24 A 2 302 030	1.109,24 A 2 302 030	1.109,24 A 2 302 030	1.109,24 A 2 302 030
2 underwater lights , LED white, with transformer	1.092,44 A 3 202 080	1.092,44 A 3 202 080	1.092,44 A 3 202 080	1.092,44 A 3 202 080	1.092,44 A 3 202 080	1.092,44 A 3 202 080	1.092,44 A 3 202 080
Trijet counter current unit, three jet system , Qmax 90 m ³ (for pools with roller shutter shaft)	6.088,24 B 3 590 067	6.088,24 B 3 590 067	6.088,24 B 3 590 067	6.088,24 B 3 590 067	6.088,24 B 3 590 067	6.088,24 B 3 590 067	6.088,24 B 3 590 067
Safety suction fittings for pools without roller shutter shaft according to DIN EN 16 713 (for pools without roller shutter shaft). 2 x 2 1/2", suction grille ø350 mm, Qmax = 52,7 m ³ /h, additional price	836,13 B 3 590 250	836,13 B 3 590 250	836,13 B 3 590 250	836,13 B 3 590 250	836,13 B 3 590 250	836,13 B 3 590 250	836,13 B 3 590 250
Trijet counter current unit, three jet system , Qmax 90 m ³ x 2 1/2", suction grille ø350 mm, Qmax = 105,4 m ³ /h, additional price. Plus set of fittings 3 x 2 1/2" (see page 7) Example consists of:	8.705,89 B 3 591 121 + B 3 591 110	8.705,89 B 3 591 121 + B 3 591 110	8.705,89 B 3 591 121 + B 3 591 110	8.705,89 B 3 591 121 + B 3 591 110	8.705,89 B 3 591 121 + B 3 591 110	8.705,89 B 3 591 121 + B 3 591 110	8.705,89 B 3 591 120 + B 3 591 110
Turbojet turbine unit , Qmax approx. 300 m ³ /h, incl. technical shaft. Colour: black (00) or white (05)	12.563,03 A 3 591 3..	12.563,03 A 3 591 3..	12.563,03 A 3 591 3..	12.563,03 A 3 591 3..	12.563,03 A 3 591 3..	12.563,03 A 3 591 3..	12.563,03 A 3 591 3..
UNDERGROUND ROLLER SHUTTER COVER							
Roller shutter shaft Integra 2-13 , for an extra high water level, extends the pool by 48 cm, with hinged seat bench and 2 inlet nozzles, Additional water content: 320: 1,6 m ³ / 370: 1,9 m ³	4.235,29 A 2 200 620	4.235,29 A 2 200 620	4.798,32 A 2 200 610	4.798,32 A 2 200 610	4.798,32 A 2 200 610	4.798,32 A 2 200 612	4.798,32 A 2 200 612
Electrical roll-up fixture , drive shaft made from composite material with internal motor with 10 m cable and stainless steel wall mount, installed in the factory; incl. control box and key switch	6.327,73 A 22 004 320	6.327,73 A 22 004 320	6.483,19 A 22 004 310	6.483,19 A 22 004 310	6.483,19 A 22 004 310	6.483,19 A 22 004 310	6.483,19 A 22 004 310
Roller shutter cover , 6 cm slat width							
Cover: Polycarbonate solar version	4.945,38 A 01-04 02 252	5.588,24 A 01-04 02 253	6.327,73 A 01-04 03 252	7.063,03 A 01-04 03 253	7.781,51 A 01-04 03 254	8.508,40 A 01-04 03 255	9.252,10 A 01-04 03 256
Polycarbonate solar , version silver vaporized	5.684,87 A 01-05 02 252	6.424,37 A 01-05 02 253	7.268,91 A 01-05 03 252	8.109,24 A 01-05 03 253	8.945,38 A 01-05 03 254	9.764,71 A 01-05 03 255	10.613,45 A 01-05 03 256
PVC solar version	3.722,69 A 01-02 02 252	4.155,46 A 01-02 02 253	4.739,50 A 01-02 03 252	5.294,12 A 01-02 03 253	5.836,13 A 01-02 03 254	6.390,76 A 01-02 03 255	6.932,77 A 01-02 03 256
PVC white (01) / PVC grey (03)	2.420,17 A 01-.. 02 252	2.731,09 A 01-.. 02 253	3.105,04 A 01-.. 03 252	3.449,58 A 01-.. 03 253	3.806,72 A 01-.. 03 254	4.134,45 A 01-.. 03 255	4.478,99 A 01-.. 03 256

MODENA 550

Classic

- One-piece pool made out of Epoxy-acrylate
- Pool with 3 cm insulation in the floor and 20 mm insulation in the walls
- Pool with 6 degree wall incline and roll cover ledge with integrated steel beam
- Pool step with 6 treads on the right side with anti-slip profiled surface



MODENA 550

Swim & Fun

Swim-Spa made out of "Epoxy Acrylate"

- 6 pool steps with anti-slip profiled surface, comfortable seat and lounge with massage equipment. Roller shutter safety ledge. Steel frame integrated below the ledge of the roller shutter
- Pool with 3 cm insulation in the floor and 2 cm insulation in the walls
- Technique shaft laminated to the pool shell with fine wood cover (Kebony®)

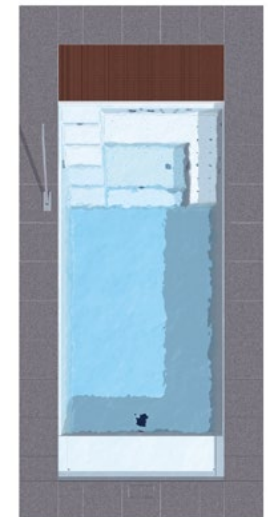
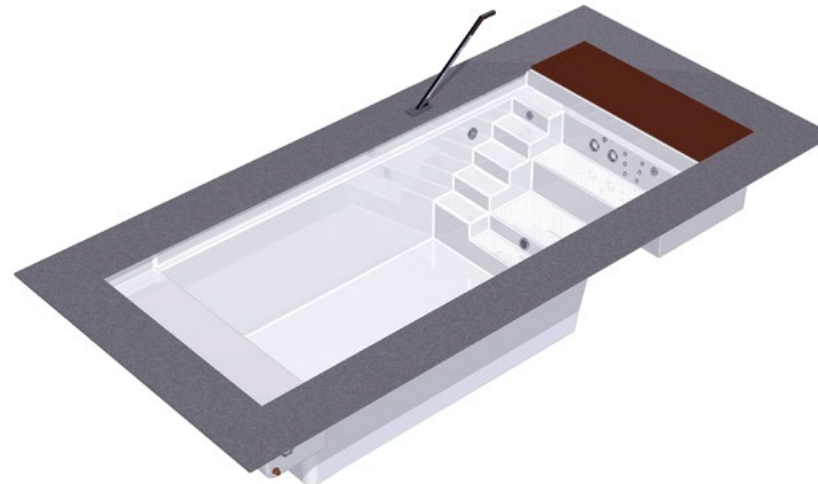
Prefabricated swimming pool for inground-installation to be backfilled with lean concrete. All accessories pre-plumbed and pre-installed.

Filtration/heating:

- Pool filter with 6-way multiport valve and pump 0,37 kW with prefilter
- Electric heater 3 + 2 kW
- Skimmer with water level regulator
- 1 low level wall suction fitting
- 1 bottom outlet sump with cover
- 2 inlet jets
- 1 underwater light, LED white, 12 V, with transformer and plastic connection box
- Spa control with Spa Touch

Swim & Fun Pak consisting of:

- Double jet countercurrent system with air controls
- 6 microjets for back and legs
- 1 floor geyser for foot and calf
- 2 maritim massage jets



Modena 550

- Colours: • plain white
 • papyrus (27) • silver-grey (24)
 • sea blue (26) **New** • beach (28)
 • granicite stone grey

EQUIPMENT PACKAGE

1 Skimmer with water level controller (8 cm), 2 inlet jets, 1 wall low level suction, 1 bottom outlet sump with cover, 1 underwater light, LED white, ø100 mm, with transformer

Water Content m³

Classic
550
5,5 x 2,7 x 1,5

Swim & Fun
550
5,5 x 2,7 x 1,5

12.193,28
A Mod 550 010 03
12.806,72
A Mod 550 010 ..
14.777,31
A Mod 550 010 22

36.386,55
A Mod 550 020 03
37.012,61
A Mod 550 020 ..
38.970,59
A Mod 550 020 22

16
2.415,97
3 540 650

16
incl.

ACCESSORIES

Decor tiles made of Ezarri glass mosaic, series „Zen“ or „Iris“, installed and grouted at the factory.

Item no. A 3 916 360

1.516,02
16,4 m

1.516,02
16,4 m

Coping Stones granite, grey, 60 x 60 x 6.3 cm, with overhanging nose mottled surface, cut out for the fiberglass skimmer lid

4.075,63
A 3 025 050

4.075,63
A 3 025 050

Stainless steel grabrail, made of square tubing, polished, with fixing material, adhesive anchors and polished screen, per piece

1.109,24
A 2 302 030

1.109,24
A 2 302 030

FUN PAK 4.2

Technique shaft, laminated to the pool shell with fine wood (Kebony®)

4.268,91
A 2 322 063

incl.

Flow and massage system with double jet counter current unit, 2 maritim massage jets, 6 Microjets, 1 floor geyser, installed in technique shaft

8.046,22
A 3 561 280

incl.

Ditto, but then for concreting with red brass inlets and PVC pipes

9.789,92
A 3 561 290

9.789,92
A 3 561 290

Air massage system, incl. piezo switch, polished, 0,85 kW blower and switchbox

3.978,99
A 3 593 110

3.978,99
A 3 593 110

2 underwater lights, LED white, with transformer

1.092,44
A 3 202 080

1.092,44
A 3 202 080

Pool filter 40 SC, with top valve, pump 0,37 kW, timer, installed in technique shaft

2.088,24
A 60 58

incl.

Warm water heat exchanger 40 kW with control unit installed in technique shaft

1.651,26
A 6 112 100

1.651,26
A 6 112 100

Twinjet counter current unit, double jet system, **Qmax 60 m³** (for pools with roller shutter shaft)

6.088,24
B 3 590 067

-

Safety suction fittings for pools without roller shutter shaft according to DIN EN 16 713 (for pools without roller shutter shaft). **2 x 2 ½"**, suction grille ø350 mm, Qmax = **52,7 m³/h**, additional price

836,13
B 3 590 250

836,13
B 3 590 250

UNDERGROUND ROLLER SHUTTER COVER

Roller shutter shaft Integra 2-13 for an extra high water level, extends the pool by 48 cm, with hinged seat bench and 2 inlet nozzles, Additional water content: 270 : 1,2 m³

3.978,99
A 2 200 640

3.978,99
A 2 200 640

Electrical roll-up fixture RSK, 24 V DC, drive shaft made from composite material with internal motor incl. 10 m cable or 20 m for the swim & fun respectively, stainless steel wall mount, installed in the factory; incl. control box and **key switch**

6.075,63
A 22 004 340

6.319,33
A 22 004 342

Roller shutter cover, 6 cm slat width

Cover: **Polycarbonate solar** version

3.508,40
A 01-04 20 211

3.508,40
A 01-04 20 211

Polycarbonate solar, version silver vaporized

4.029,41
A 01-05 20 211

4.029,41
A 01-05 20 211

PVC solar version

2.605,04
A 01-02 20 211

2.605,04
A 01-02 20 211

PVC white (01) / **PVC** grey (03)

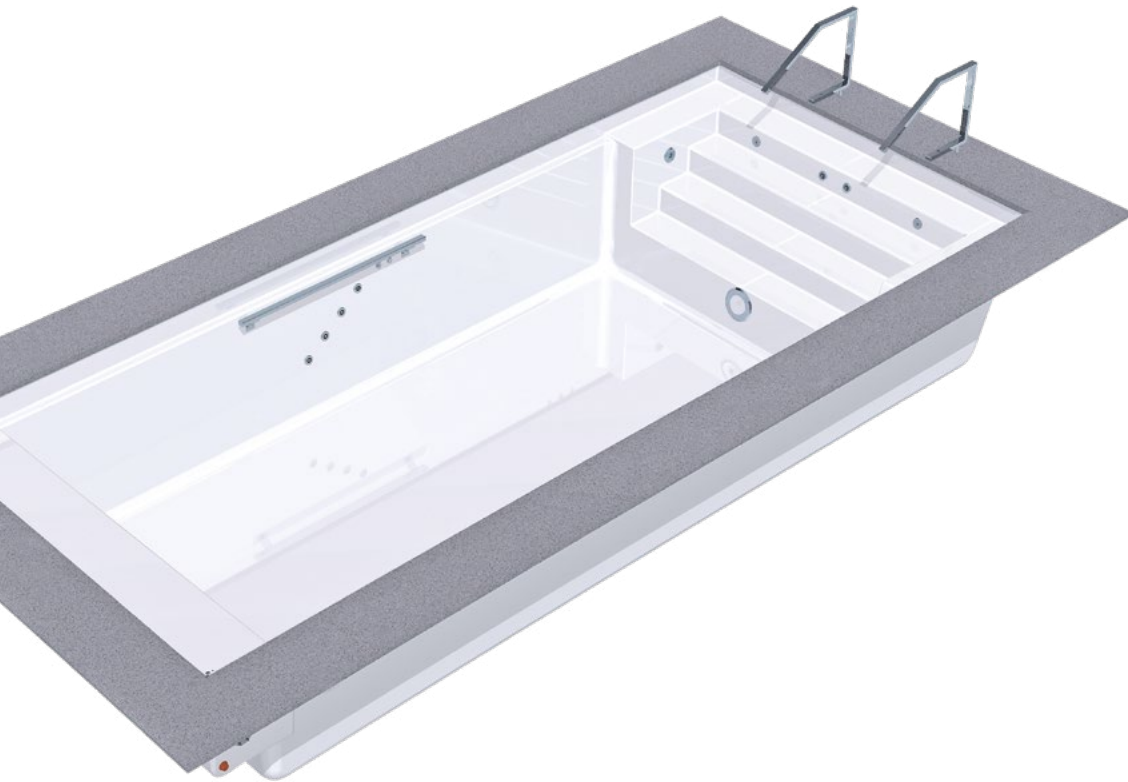
1.848,74
A 01-.. 20 211

1.848,74
A 01-.. 20 211

FREIGHT CHARGES on request

LINEAR – Modern, elegant and clean lines. An entry step for friends to gather and relax, before or after exercise.

One-piece pool made out of Epoxy-acrylate, sandwich construction with 2 cm insulation in walls and 3 cm in the floor. 6 degree wall incline and rollcover ledge with integrated steel beam. 4 extra wide 37 cm steps with anti-slip profiled surface.



D•Line LINEAR

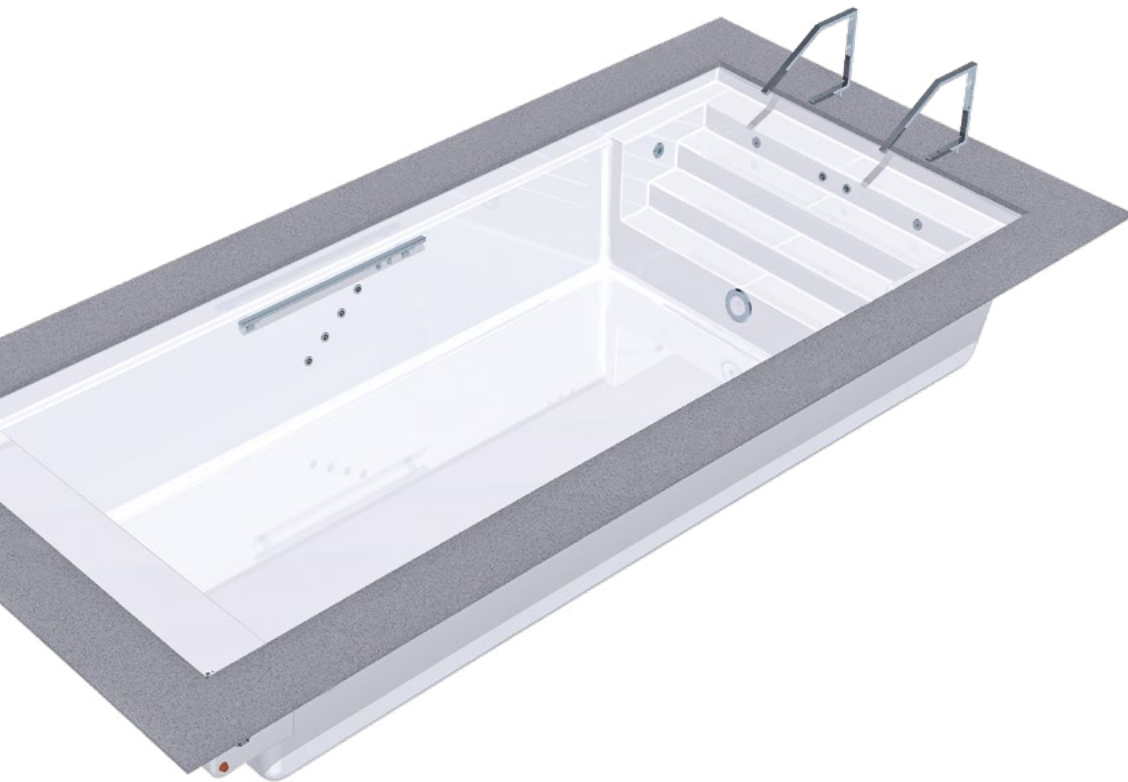


D-Line LINEAR

	745 7,4 x 3,7 x 1,5 m	845 8,4 x 3,7 x 1,5 m	945 9,4 x 3,7 x 1,5 m	1045 10,4 x 3,7 x 1,5 m	1145 11,4 x 3,7 x 1,5 m
Colours: • plain white	22.092,44 A Lin 745 010 03	23.571,43 A Lin 845 010 03	25.046,22 A Lin 945 010 03	26.529,41 A Lin 1045 010 03	28.012,61 A Lin 1145 010 03
• papyrus (27) • silver-grey (24)	22.672,27 A Lin 745 010 ..	24.138,66 A Lin 845 010 ..	25.626,05 A Lin 945 010 ..	27.100,84 A Lin 1045 010 ..	28.588,24 A Lin 1145 010 ..
• sea blue (26) New • beach (28)	25.563,03 A Lin 745 010 22	27.037,82 A Lin 845 010 22	28.516,81 A Lin 945 010 22	29.995,80 A Lin 1045 010 22	31.483,19 A Lin 1145 010 22
EQUIPMENT PACKAGE	Water Content m ³ 31	36	41	46	51
1 Skimmer with water level controller (8 cm), 2 (4) inlet jets, 1 wall low level suction, 1 bottom outlet sump with cover, 1 underwater light, LED white, with transformer	2.605,04 3 540 500	2.605,04 3 540 500	2.605,04 3 540 500	2.907,56 3 540 510	2.907,56 3 540 510
Additional underwater light with screwed-on red brass niche, 100 VA transformer	957,98 A 3 531 355	957,98 A 3 531 355	957,98 A 3 531 355	957,98 A 3 531 355	957,98 A 3 531 355
ACCESSORIES					
Decor tiles made of Ezarri glass mosaic , series „Zen“ or „Iris“, installed and grouted at the factory Item no. A 3 916 360	2.061,41 22,3 m	2.246,29 24,3 m	2.431,17 26,3 m	2.616,05 28,3 m	2.800,93 30,3 m
Coping stones granite , grey, 60 x 60 x 6.3 cm, with overhanging nose mottled surface, cut out for the fiberglass skimmer lid	4.869,75 A 3 025 120	5.071,43 A 3 025 130	5.474,79 A 3 025 142	5.676,47 A 3 025 144	5.878,15 A 3 025 152
Stainless steel grabrail Linear , polished, with fixing material, per piece	1.231,09 A 2 302 040	1.231,09 A 2 302 040	1.231,09 A 2 302 040	1.231,09 A 2 302 040	1.231,09 A 2 302 040
2 underwater lights , LED white, with transformer	1.092,44 A 3 202 080	1.092,44 A 3 202 080	1.092,44 A 3 202 080	1.092,44 A 3 202 080	1.092,44 A 3 202 080
Twinjet counter current unit , double jet system, Qmax 60 m³ (for pools with roller shutter shaft)	6.088,24 B 3 590 067	6.088,24 B 3 590 067	6.088,24 B 3 590 067	6.088,24 B 3 590 067	6.088,24 B 3 590 067
Safety suction fittings for pools without roller shutter shaft according to DIN EN 16 713 (for pools without roller shutter shaft). 2 x 2 1/2" , suction grille ø350 mm, Qmax = 52,7 m³/h , additional price	836,13 B 3 590 250	836,13 B 3 590 250	836,13 B 3 590 250	836,13 B 3 590 250	836,13 B 3 590 250
Trijet counter current unit, three jet system , Qmax 90 m³ (for pools with roller shutter shaft). Alternatives on request. Example consists of:	8.705,89 B 3 591 121 + B 3 591 110	8.705,89 B 3 591 121 + B 3 591 110	8.705,89 B 3 591 121 + B 3 591 110	8.705,89 B 3 591 121 + B 3 591 110	8.705,89 B 3 591 121 + B 3 591 110
Safety suction fittings for pools without roller shutter shaft according to DIN EN 16 713 (for pools without roller shutter shaft). 3 x 2 1/2" , suction grille ø350 mm, Qmax = 105,4 m³/h , additional price	1.029,41 B 3 590 260	1.029,41 B 3 590 260	1.029,41 B 3 590 260	1.029,41 B 3 590 260	1.029,41 B 3 590 260
Turbojet turbine unit , Qmax approx. 300 m³/h , incl. technical shaft Colour: black (00) or white (05)	12.563,03 A 3 591 3..	12.563,03 A 3 591 3..	12.563,03 A 3 591 3..	12.563,03 A 3 591 3..	12.563,03 A 3 591 3..
UNDERGROUND ROLLER SHUTTER COVER					
Roller shutter shaft Integra 2-13 for an extra high water level, extends the pool by 48 cm, with hinged seat bench and 2 inlet nozzles, Additional water content: 370: 1,9 m ³	4.798,32 A 2 200 610	4.798,32 A 2 200 610	4.798,32 A 2 200 610	4.798,32 A 2 200 612	4.798,32 A 2 200 612
Electrical roll-up fixture , drive shaft made from composite material with internal motor with 10 m cable and stainless steel wall mount, installed in the factory; incl. control box and key switch	6.483,19 A 22 004 310	6.483,19 A 22 004 310	6.483,19 A 22 004 310	6.483,19 A 22 004 310	6.483,19 A 22 004 310
Roller shutter cover , 6 cm slat width					
Cover: Polycarbonate solar version	6.327,73 A 01-04 03 232	7.063,03 A 01-04 03 233	7.781,51 A 01-04 03 234	8.508,40 A 01-04 03 235	9.252,10 A 01-04 03 236
Polycarbonate solar , version silver vaporized	7.268,91 A 01-05 03 232	8.109,24 A 01-05 03 233	8.945,38 A 01-05 03 234	9.764,71 A 01-05 03 235	10.613,45 A 01-05 03 236
PVC solar version	4.739,50 A 01-02 03 232	5.294,12 A 01-02 03 233	5.836,13 A 01-02 03 234	6.390,76 A 01-02 03 235	6.932,77 A 01-02 03 236
PVC white (01) / PVC grey (03)	3.105,04 A 01- .. 03 232	3.449,58 A 01- .. 03 233	3.806,72 A 01- .. 03 234	4.134,45 A 01- .. 03 235	4.478,99 A 01- .. 03 236
FREIGHT CHARGES on request					

LINEAR 2.0 – Modern, elegant and clean lines.
An entry step to relax, before or after exercise.

One-piece pool made out of Epoxy-acrylate, sandwich construction with 2 cm insulation in walls and 3 cm in the floor. 6 degree wall incline and rollcover ledge with integrated steel beam. 4 extra wide 37 cm steps with anti-slip profiled surface.



Available from May 2022!

D•Line LINEAR 2.0

370



320



D-Line LINEAR 2.0

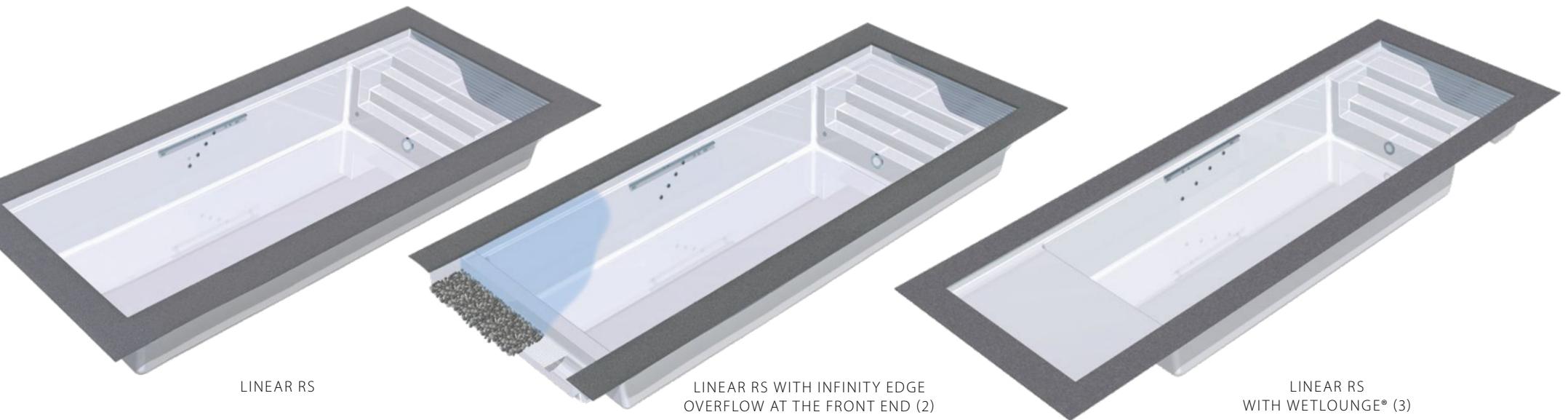
	700 6,90 x 3,2 x 1,5 m	800 7,90 x 3,2 x 1,5 m	740 7,4 x 3,7 x 1,5 m	840 8,4 x 3,7 x 1,5 m	940 9,4 x 3,7 x 1,5 m	1040 10,4 x 3,7 x 1,5 m	1140 11,4 x 3,7 x 1,5 m
Colours: • plain white	18.970,59 A Lin 700 010 03	21.764,71 A Lin 800 010 03	22.092,44 A Lin 745 020 03	23.571,43 A Lin 845 020 03	25.046,22 A Lin 945 020 03	26.529,41 A Lin 1045 020 03	28.012,61 A Lin 1145 020 03
• papyrus (27) • silver-grey (24)	19.483,19 A Lin 700 010 ..	22.537,82 A Lin 800 010 ..	22.672,27 A Lin 745 020 ..	24.138,66 A Lin 845 020 ..	25.626,05 A Lin 945 020 ..	27.100,84 A Lin 1045 020 ..	28.588,24 A Lin 1145 020 ..
• sea blue (26) New • beach (28)	22.504,20 A Lin 700 010 22	25.819,33 A Lin 800 010 22	25.563,03 A Lin 745 020 22	27.037,82 A Lin 845 020 22	28.516,81 A Lin 945 020 22	29.995,80 A Lin 1045 020 22	31.483,19 A Lin 1145 020 22
• granicite stone grey							
EQUIPMENT PACKAGE	Water Content m ³						
1 Skimmer with water level controller (8 cm), 2 (4) inlet jets, 1 wall low level suction, 1 bottom outlet sump with cover, 1 underwater light, LED white, with transformer, polished elements	27	31	31	36	41	46	51
Additional underwater light with screwed-on red brass niche, 100 VA transformer	2.605,04 3 540 500	2.605,04 3 540 500	2.605,04 3 540 500	2.605,04 3 540 500	2.605,04 3 540 500	2.907,56 3 540 510	2.907,56 3 540 510
	957,98 A 3 531 355	957,98 A 3 531 355	957,98 A 3 531 355	957,98 A 3 531 355	957,98 A 3 531 355	957,98 A 3 531 355	957,98 A 3 531 355
ACCESSORIES							
Decor tiles made of glass mosaic , installed and grouted at the factory. Item no. A 3 916 360	1.867,29 20,2 m	2.052,17 22,2 m	2.061,41 22,3 m	2.246,29 24,3 m	2.431,17 26,3 m	2.616,05 28,3 m	2.800,93 30,3 m
Coping stones granite , grey, 60 x 60 x 6.3 cm, with overhanging nose mottled surface, cut out for the fiberglass skimmer lid	4.466,39 A 3 025 020	4.869,75 A 3 025 025	4.869,75 A 3 025 120	5.071,43 A 3 025 130	5.474,79 A 3 025 142	5.676,47 A 3 025 144	5.878,15 A 3 025 152
Stainless steel grabrail Linear , polished, with fixing material, per piece	1.231,09 A 2 302 040	1.231,09 A 2 302 040	1.231,09 A 2 302 040	1.231,09 A 2 302 040	1.231,09 A 2 302 040	1.231,09 A 2 302 040	1.231,09 A 2 302 040
2 underwater lights , LED white, with transformer, polished	1.092,44 A 3 202 080	1.092,44 A 3 202 080	1.092,44 A 3 202 080	1.092,44 A 3 202 080	1.092,44 A 3 202 080	1.092,44 A 3 202 080	1.092,44 A 3 202 080
Twinjet counter current unit , double jet system, Qmax 60 m³ (for pools with roller shutter shaft)	6.088,24 B 3 590 067	6.088,24 B 3 590 067	6.088,24 B 3 590 067	6.088,24 B 3 590 067	6.088,24 B 3 590 067	6.088,24 B 3 590 067	6.088,24 B 3 590 067
Safety suction fittings for pools without roller shutter shaft according to DIN EN 16 713 (for pools without roller shutter shaft). 2 x 2 1/2" , suction grille ø350 mm, Qmax = 52,7 m³/h , additional price	836,13 B 3 590 250	836,13 B 3 590 250	836,13 B 3 590 250	836,13 B 3 590 250	836,13 B 3 590 250	836,13 B 3 590 250	836,13 B 3 590 250
Trijet counter current unit, three jet system , Qmax 90 m³ (for pools with roller shutter shaft) Alternatives on request. Example consists of:	8.705,89 B 3 591 121 + B 3 591 110	8.705,89 B 3 591 121 + B 3 591 110	8.705,89 B 3 591 121 + B 3 591 110	8.705,89 B 3 591 121 + B 3 591 110	8.705,89 B 3 591 121 + B 3 591 110	8.705,89 B 3 591 121 + B 3 591 110	8.705,89 B 3 591 121 + B 3 591 110
Safety suction fittings for pools without roller shutter shaft according to DIN EN 16 713 (for pools without roller shutter shaft). 3 x 2 1/2" , suction grille ø350 mm, Qmax = 105,4 m³/h , additional price	1.029,41 B 3 590 260	1.029,41 B 3 590 260	1.029,41 B 3 590 260	1.029,41 B 3 590 260	1.029,41 B 3 590 260	1.029,41 B 3 590 260	1.029,41 B 3 590 260
Turbojet turbine unit , Qmax approx. 300 m³/h , incl. technical shaft. Colour: black (00) or white (05)	12.563,03 A 3 591 3..	12.563,03 A 3 591 3..	12.563,03 A 3 591 3..	12.563,03 A 3 591 3..	12.563,03 A 3 591 3..	12.563,03 A 3 591 3..	12.563,03 A 3 591 3..
UNDERGROUND ROLLER SHUTTER COVER							
Roller shutter shaft Integra 2-13 for an extra high water level, extends the pool by 48 cm, with hinged seat bench and 2 inlet nozzles, Additional water content: 320: 1,6 m ³ , 370: 1,9 m ³	4.235,29 A 2 200 620	4.235,29 A 2 200 620	4.798,32 A 2 200 610	4.798,32 A 2 200 610	4.798,32 A 2 200 610	4.798,32 A 2 200 612	4.798,32 A 2 200 612
Electrical roll-up fixture , drive shaft made from composite material with internal motor with 10 m cable and stainless steel wall mount, installed in the factory; incl. control box and key switch	6.327,73 A 22 004 320	6.327,73 A 22 004 320	6.483,19 A 22 004 310	6.483,19 A 22 004 310	6.483,19 A 22 004 310	6.483,19 A 22 004 310	6.483,19 A 22 004 310
Roller shutter cover , 6 cm slat width							
Cover: Polycarbonate solar version	4.945,38 A 01-04 02 232	5.588,24 A 01-04 02 233	6.327,73 A 01-04 03 232	7.063,03 A 01-04 03 233	7.781,51 A 01-04 03 234	8.508,40 A 01-04 03 235	9.252,10 A 01-04 03 236
Polycarbonate solar , version silver vaporized	5.684,87 A 01-05 02 232	6.424,37 A 01-05 02 233	7.268,91 A 01-05 03 232	8.109,24 A 01-05 03 233	8.945,38 A 01-05 03 234	9.764,71 A 01-05 03 235	10.613,45 A 01-05 03 236
PVC solar version	3.722,69 A 01-02 02 232	4.155,46 A 01-02 02 233	4.739,50 A 01-02 03 232	5.294,12 A 01-02 03 233	5.836,13 A 01-02 03 234	6.390,76 A 01-02 03 235	6.932,77 A 01-02 03 236
PVC white (01) / PVC grey (03)	2.420,17 A 01-.. 02 232	2.731,09 A 01-.. 02 233	3.105,04 A 01-.. 03 232	3.449,58 A 01-.. 03 233	3.806,72 A 01-.. 03 234	4.134,45 A 01-.. 03 235	4.478,99 A 01-.. 03 236
FREIGHT CHARGES on request							

Linear RS – the highlight of your garden

The linear step end with integrated roller shutter shaft.

A one-piece swimming pool like the Linear but with a more sophisticated feature: The Linear RS stairs have an integrated roller-shutter shaft. The cover is concealed invisibly below the steps, slides out at the touch of a button and covers the pool. For inspections, the step section folds up to open up the entire shaft. This arrangement also allows the use of an infinity edge that can be covered with decorative flow gravel; the water surface is smooth and calm (Fig. 2). The WetLounge is a great combination with the Linear RS stairs, providing an additional calm-water area for you to relax and your children to play (Fig. 3).

D•Line LINEAR RS



D • Line LINEAR RS

Colours: • plain white

• papyrus (27) • silver-grey (24)
• sea blue (26) **New** • beach (28)

• granicite stone grey

775 7,75 x 3,7 x 1,5 875 8,75 x 3,7 x 1,5 975 9,75 x 3,7 x 1,5 1075 10,75 x 3,7 x 1,5 1175 11,75 x 3,7 x 1,5

30.567,23 A LRS 775 010 03 **32.042,02** A LRS 875 010 03 **33.525,21** A LRS 975 010 03 **34.995,80** A LRS 1075 010 03 **36.483,19** A LRS 1175 010 03

31.147,06 A LRS 775 010 .. **32.617,65** A LRS 875 010 .. **34.092,44** A LRS 975 010 .. **35.579,83** A LRS 1075 010 .. **37.058,82** A LRS 1175 010 ..

34.033,61 A LRS 775 010 22 **35.512,61** A LRS 875 010 22 **36.987,39** A LRS 975 010 22 **38.474,79** A LRS 1075 010 22 **39.957,98** A LRS 1175 010 22

EQUIPMENT PACKAGE

Water Content m³

32 37 42 47 52

1 Skimmer with water level controller (8 cm), 2 (4) inlet jets, 1 wall low level suction, 1 bottom outlet sump with cover, 1 underwater light, LED white, with transformer

2.605,04 3 540 500 **2.605,04** 3 540 500 **2.605,04** 3 540 500 **2.907,56** 3 540 510 **2.907,56** 3 540 510

Additional underwater light with screwed-on red brass niche, 100 VA transformer

957,98 A 3 531 355 **957,98** A 3 531 355 **957,98** A 3 531 355 **957,98** A 3 531 355 **957,98** A 3 531 355

ACCESSORIES

Decor tiles made of glass mosaic, series „Zen“ or „Iris“, installed and grouted at the factory. Item no. A 3 916 360

2.116,88 22,9 m **2.301,76** 24,9 m **2.486,64** 26,9 m **2.763,96** 29,9 m **2.856,40** 30,9 m

Coping stones granite, grey, 60 x 60 x 6.3 cm, with overhanging nose mottled surface, cut out for the fiberglass skimmer lid

4.869,75 A 3 025 120 **5.071,43** A 3 025 130 **5.474,79** A 3 025 142 **5.676,47** A 3 025 144 **5.878,15** A 3 025 152

Stainless steel grabrail Linear, polished, with fixing material, per piece

1.231,09 A 2 302 040 **1.231,09** A 2 302 040 **1.231,09** A 2 302 040 **1.231,09** A 2 302 040 **1.231,09** A 2 302 040

2 underwater lights, LED white, with transformer

1.092,44 A 3 202 080 **1.092,44** A 3 202 080 **1.092,44** A 3 202 080 **1.092,44** A 3 202 080 **1.092,44** A 3 202 080

Twinjet counter current unit, double jet system, **Qmax 60 m³** (for pools with roller shutter shaft)

6.088,24 B 3 590 067 **6.088,24** B 3 590 067 **6.088,24** B 3 590 067 **6.088,24** B 3 590 067 **6.088,24** B 3 590 067

Safety suction fittings for pools without roller shutter shaft according to DIN EN 16 713

(for pools without roller shutter shaft). **2 x 2 ½"**, suction grille ø350 mm, **Qmax = 52,7 m³/h**, additional price

836,13 B 3 590 250 **836,13** B 3 590 250 **836,13** B 3 590 250 **836,13** B 3 590 250 **836,13** B 3 590 250

Trijet counter current unit, three jet system, **Qmax 90 m³**

(for pools with roller shutter shaft)

Alternatives on request.
Example consists of:

8.705,89 B 3 591 121 + B 3 591 110 **8.705,89** B 3 591 121 + B 3 591 110 **8.705,89** B 3 591 121 + B 3 591 110 **8.705,89** B 3 591 121 + B 3 591 110 **8.705,89** B 3 591 121 + B 3 591 110

Safety suction fittings for pools without roller shutter shaft according to DIN EN 16 713

(for pools without roller shutter shaft). **3 x 2 ½"**, suction grille ø350 mm, **Qmax = 105,4 m³/h**, additional price

1.029,41 B 3 590 260 **1.029,41** B 3 590 260 **1.029,41** B 3 590 260 **1.029,41** B 3 590 260 **1.029,41** B 3 590 260

Turbojet turbine unit, **Qmax approx. 300 m³/h**, incl. technical shaft.

Colour: **black (00)** or **white (05)**

12.563,03 A 3 591 3.. **12.563,03** A 3 591 3.. **12.563,03** A 3 591 3.. **12.563,03** A 3 591 3.. **12.563,03** A 3 591 3..

UNDERGROUND ROLLER SHUTTER COVER

Electrical roll-up fixture, drive shaft made from composite material with internal motor with 10 m cable and stainless steel wall mount, installed in the factory; incl. control box and **key switch**

6.483,19 A 22 004 310 **6.483,19** A 22 004 310 **6.483,19** A 22 004 310 **6.483,19** A 22 004 310 **6.483,19** A 22 004 310

Roller shutter cover, 6 cm slat width

Cover: **Polycarbonate solar** version

6.327,73 A 01-04 04 232 **7.063,03** A 01-04 04 233 **7.781,51** A 01-04 04 234 **8.508,40** A 01-04 04 235 **9.252,10** A 01-04 04 236

Polycarbonate solar, version silver vaporized

7.268,91 A 01-05 04 232 **8.109,24** A 01-05 04 233 **8.945,38** A 01-05 04 234 **9.764,71** A 01-05 04 235 **10.613,45** A 01-05 04 236

PVC solar version

4.739,50 A 01-02 04 232 **5.294,12** A 01-02 04 233 **5.836,13** A 01-02 04 234 **6.390,76** A 01-02 04 235 **6.932,77** A 01-02 04 236

PVC white (01) / **PVC** grey (03)

3.105,04 A 01-.. 04 232 **3.449,58** A 01-.. 04 233 **3.806,72** A 01-.. 04 234 **4.134,45** A 01-.. 04 235 **4.478,99** A 01-.. 04 236

Infinity edge overflow at the front end

3.315,13 A 2 115 050 **3.315,13** A 2 115 050 **3.315,13** A 2 115 050 **3.315,13** A 2 115 050 **3.315,13** A 2 115 050

Overflow channel with gutter for infinity edge

1.100,84 A 2 115 055 **1.100,84** A 2 115 055 **1.100,84** A 2 115 055 **1.100,84** A 2 115 055 **1.100,84** A 2 115 055

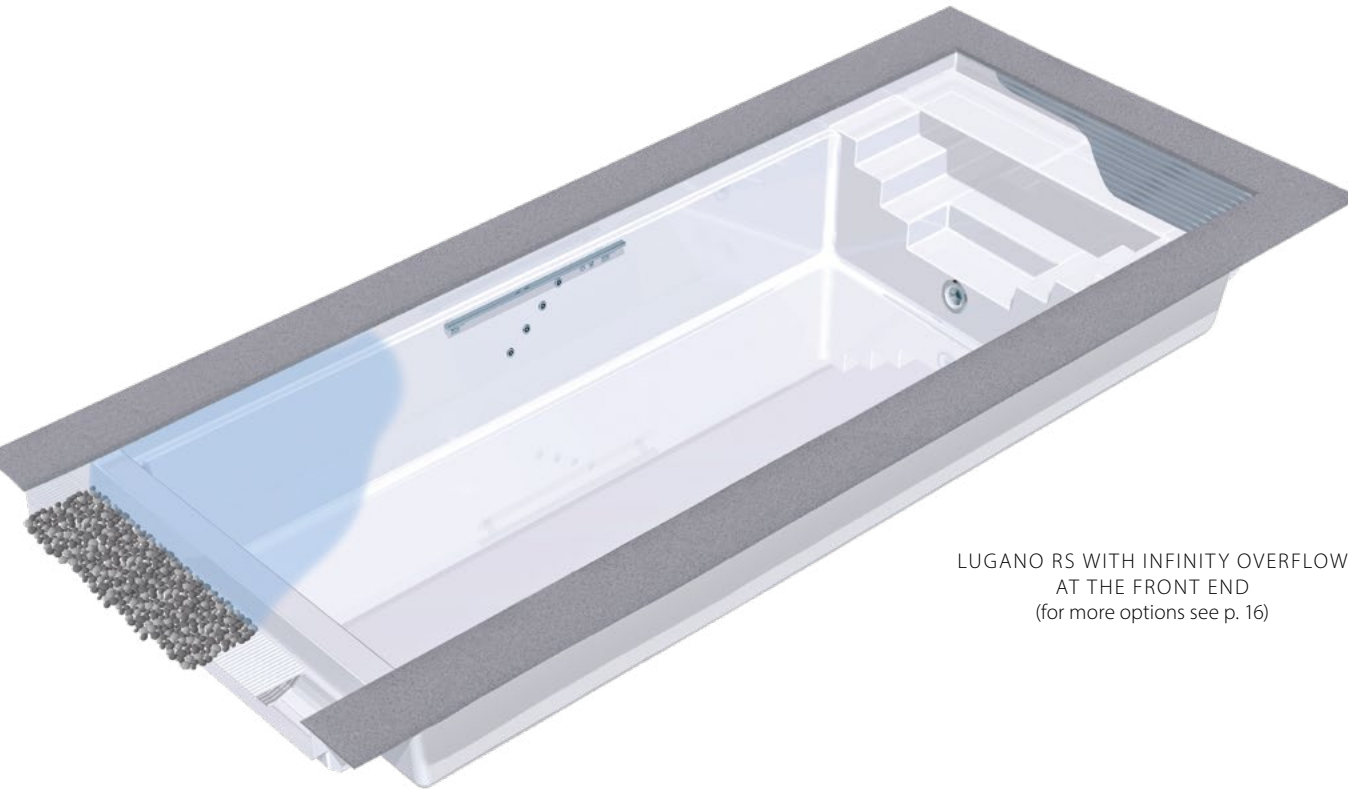
Shallow water area (Caution: Include roller cover extension) 23 cm deep, 2 m laminated, **** 1,80 m** long, flanged

5.680,67 A 2 115 370 **5.680,67** A 2 115 370 **5.680,67** A 2 115 370 **7.752,10**** A 2 115 360 **7.752,10**** A 2 115 360

FREIGHT CHARGES on request

The *new* LUGANO RS – the focal point of your wellness oasis!

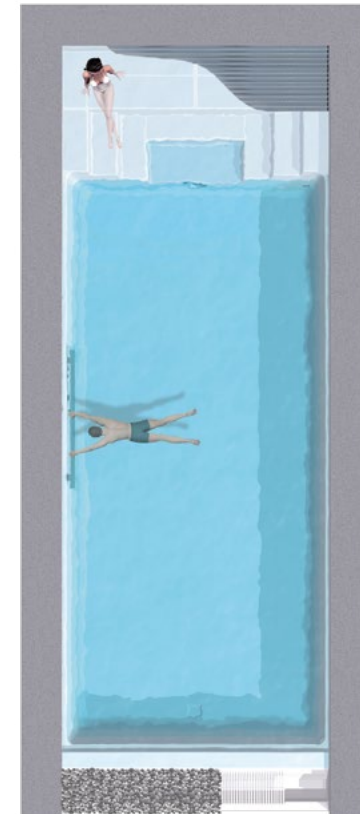
Just as the Linear RS the Lugano RS features an integrated roller shutter shaft. The cover is concealed invisibly below the steps, slides out at the touch of a button and covers the pool. For inspections, the step can be opened. This arrangement also allows the use of an infinity edge that can be covered with decorative flow gravel; the water surface is smooth and calm. The WetLounge is a great combination with the Lugano RS stairs, providing an additional shallow-water area for you to relax and your children to play (see example of Linear RS with Wetlounge).



LUGANO RS WITH INFINITY OVERFLOW
AT THE FRONT END
(for more options see p. 16)



D•Line LUGANO RS





D • Line LUGANO RS

Colours: • plain white

- papyrus (27) • silver-grey (24)
- sea blue (26) **New** • beach (28)
- granicite stone grey

775 7,75 x 3,7 x 1,5	875 8,75 x 3,7 x 1,5	975 9,75 x 3,7 x 1,5	1075 10,75 x 3,7 x 1,5	1175 11,75 x 3,7 x 1,5
30.369,75 A LURS 775 010 03	31.844,54 A LURS 875 010 03	33.327,73 A LURS 975 010 03	34.798,32 A LURS 1075 010 03	36.285,71 A LURS 1175 010 03
30.949,58 A LURS 775 010 ..	31.995,80 A LURS 875 010 ..	33.894,96 A LURS 975 010 ..	35.378,15 A LURS 1075 010 ..	36.861,34 A LURS 1175 010 ..
33.836,13 A LURS 775 010 22	35.289,92 A LURS 875 010 22	36.785,71 A LURS 975 010 22	38.273,11 A LURS 1075 010 22	39.760,50 A LURS 1175 010 22

EQUIPMENT PACKAGE

Water Content m³

1 Skimmer with water level controller (8 cm), 2 (4) inlet jets, 1 wall low level suction, 1 bottom outlet sump with cover, 1 underwater light, LED white, with transformer

Additional underwater light with screwed-on red brass niche, 100 VA transformer

32	37	42	47	52
2.605,04 3 540 500	2.605,04 3 540 500	2.605,04 3 540 500	2.907,56 3 540 510	2.907,56 3 540 510
957,98 A 3 531 355	957,98 A 3 531 355	957,98 A 3 531 355	957,98 A 3 531 355	957,98 A 3 531 355

ACCESSORIES

Decor tiles made of glass mosaic, series „Zen“ or „Iris“, installed and grouted at the factory.

Item no. A 3 916 360

2.116,88 22,9 m	2.301,76 24,9 m	2.486,64 26,9 m	2.763,96 29,9 m	2.856,40 30,9 m
---------------------------	---------------------------	---------------------------	---------------------------	---------------------------

Coping stones granite, grey, 60 x 60 x 6.3 cm, with overhanging nose mottled surface, cut out for the fiberglass skimmer lid

4.869,75 A 3 025 120	5.071,43 A 3 025 130	5.474,79 A 3 025 142	5.676,47 A 3 025 144	5.878,15 A 3 025 152
--------------------------------	--------------------------------	--------------------------------	--------------------------------	--------------------------------

Stainless steel grabrail Linear, polished, with fixing material, per piece

1.231,09 A 2 302 040	1.231,09 A 2 302 040	1.231,09 A 2 302 040	1.231,09 A 2 302 040	1.231,09 A 2 302 040
--------------------------------	--------------------------------	--------------------------------	--------------------------------	--------------------------------

2 underwater lights, LED white, with transformer

1.092,44 A 3 202 080	1.092,44 A 3 202 080	1.092,44 A 3 202 080	1.092,44 A 3 202 080	1.092,44 A 3 202 080
--------------------------------	--------------------------------	--------------------------------	--------------------------------	--------------------------------

Twinjet counter current unit, double jet system, **Qmax 60 m³** (for pools with roller shutter shaft)

6.088,24 B 3 590 067	6.088,24 B 3 590 067	6.088,24 B 3 590 067	6.088,24 B 3 590 067	6.088,24 B 3 590 067
--------------------------------	--------------------------------	--------------------------------	--------------------------------	--------------------------------

Safety suction fittings for pools without roller shutter shaft according to DIN EN 16 713

(for pools without roller shutter shaft). **2 x 2 1/2"**, suction grille ø350 mm, **Qmax = 52,7 m³/h**, additional price

836,13 B 3 590 250	836,13 B 3 590 250	836,13 B 3 590 250	836,13 B 3 590 250	836,13 B 3 590 250
------------------------------	------------------------------	------------------------------	------------------------------	------------------------------

Trijet counter current unit, three jet system, **Qmax 90 m³**

(for pools with roller shutter shaft)

Alternatives on request.
Example consists of:

8.705,89 B 3 591 121 + B 3 591 110	8.705,89 B 3 591 121 + B 3 591 110	8.705,89 B 3 591 121 + B 3 591 110	8.705,89 B 3 591 121 + B 3 591 110	8.705,89 B 3 591 121 + B 3 591 110
--	--	--	--	--

Safety suction fittings for pools without roller shutter shaft according to DIN EN 16 713

(for pools without roller shutter shaft). **3 x 2 1/2"**, suction grille ø350 mm, **Qmax = 105,4 m³/h**, additional price

1.029,41 B 3 590 260	1.029,41 B 3 590 260	1.029,41 B 3 590 260	1.029,41 B 3 590 260	1.029,41 B 3 590 260
--------------------------------	--------------------------------	--------------------------------	--------------------------------	--------------------------------

Turbojet turbine unit, **Qmax approx. 300 m³/h**, incl. technical shaft.

Colour: black (00) or white (05)

12.563,03 A 3 591 3..	12.563,03 A 3 591 3..	12.563,03 A 3 591 3..	12.563,03 A 3 591 3..	12.563,03 A 3 591 3..
---------------------------------	---------------------------------	---------------------------------	---------------------------------	---------------------------------

UNDERGROUND ROLLER SHUTTER COVER

Electrical roll-up fixture, drive shaft made from composite material with internal motor with 10 m cable and stainless steel wall mount, installed in the factory; incl. control box and **key switch**

6.483,19 A 22 004 310	6.483,19 A 22 004 310	6.483,19 A 22 004 310	6.483,19 A 22 004 310	6.483,19 A 22 004 310
---------------------------------	---------------------------------	---------------------------------	---------------------------------	---------------------------------

Roller shutter cover, 6 cm slat width

Cover: **Polycarbonate solar** version

6.327,73 A 01-04 04 232	7.063,03 A 01-04 04 233	7.781,51 A 01-04 04 234	8.508,40 A 01-04 04 235	9.252,10 A 01-04 04 236
-----------------------------------	-----------------------------------	-----------------------------------	-----------------------------------	-----------------------------------

Polycarbonate solar, version silver vaporized

7.268,91 A 01-05 04 232	8.109,24 A 01-05 04 233	8.945,38 A 01-05 04 234	9.764,71 A 01-05 04 235	10.613,45 A 01-05 04 236
-----------------------------------	-----------------------------------	-----------------------------------	-----------------------------------	------------------------------------

PVC solar version

4.739,50 A 01-02 04 232	5.294,12 A 01-02 04 233	5.836,13 A 01-02 04 234	6.390,76 A 01-02 04 235	6.932,77 A 01-02 04 236
-----------------------------------	-----------------------------------	-----------------------------------	-----------------------------------	-----------------------------------

PVC white (01) / **PVC** grey (03)

3.105,04 A 01- .. 04 232	3.449,58 A 01- .. 04 233	3.806,72 A 01- .. 04 234	4.134,45 A 01- .. 04 235	4.478,99 A 01- .. 04 236
------------------------------------	------------------------------------	------------------------------------	------------------------------------	------------------------------------

Infinity edge overflow at the front end

3.315,13 A 2 115 050	3.315,13 A 2 115 050	3.315,13 A 2 115 050	3.315,13 A 2 115 050	3.315,13 A 2 115 050
--------------------------------	--------------------------------	--------------------------------	--------------------------------	--------------------------------

Overflow channel with gutter for infinity edge

1.100,84 A 2 115 055	1.100,84 A 2 115 055	1.100,84 A 2 115 055	1.100,84 A 2 115 055	1.100,84 A 2 115 055
--------------------------------	--------------------------------	--------------------------------	--------------------------------	--------------------------------

Shallow water area (Caution: Include roller cover extension) 23 cm deep, 2 m laminated, ** 1,80 m long, flanged

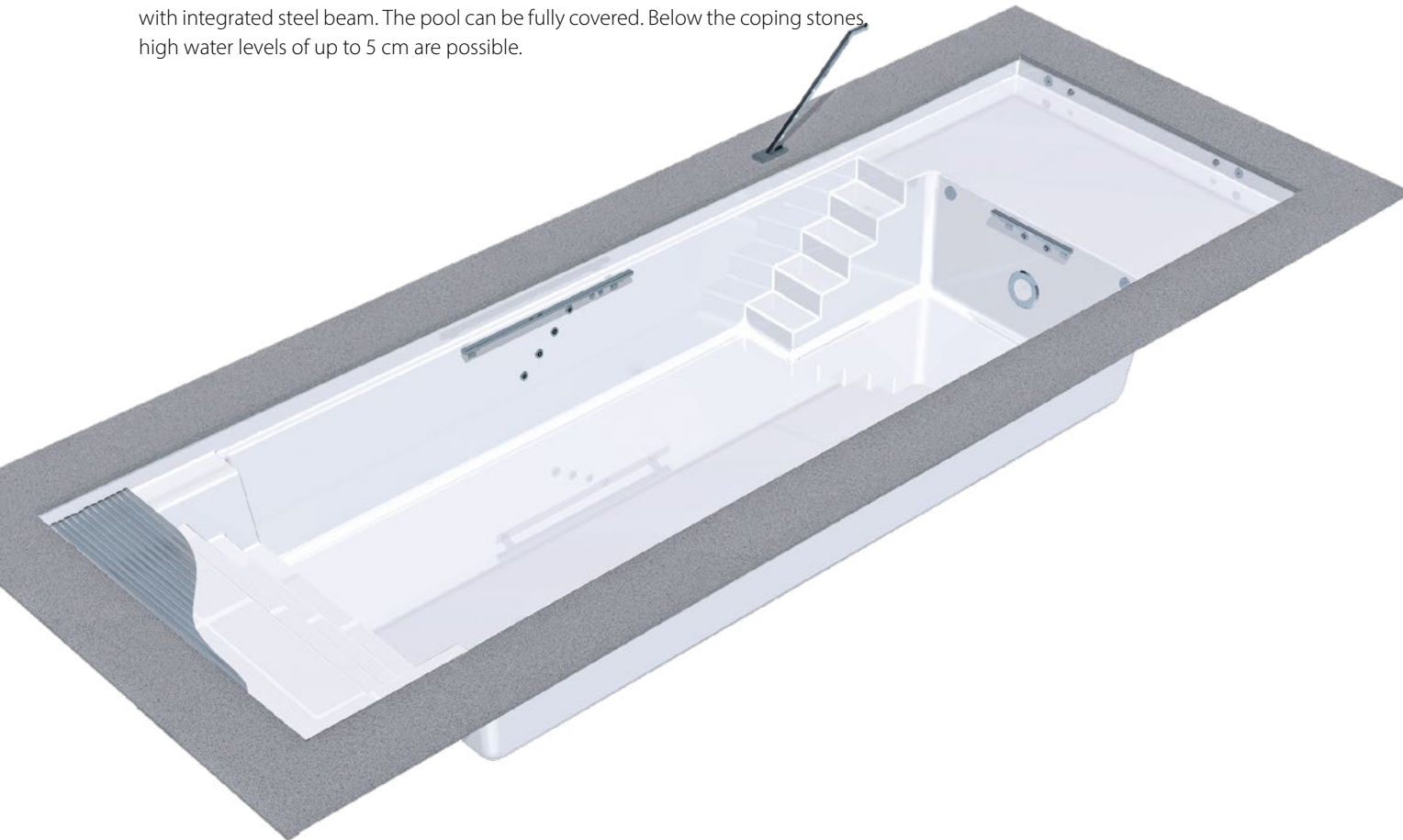
5.680,67 A 2 115 370	5.680,67 A 2 115 370	5.680,67 A 2 115 370	7.752,10** A 2 115 360	7.752,10** A 2 115 360
--------------------------------	--------------------------------	--------------------------------	----------------------------------	----------------------------------

FREIGHT CHARGES on request

WetLounge® is the ideal combination for plenty of unique and unforgettable summers:

- Spacious swimming area measuring 8 x 3,7 metres or 10 x 3,7 metres with 1,5 metres depth
- Step end Linear RS with four large steps and integrated roller shutter pool cover
- WetLounge® –shallow water zone 2 x 3,7 meters and 0,23 meters depth
- Step system Ancona, five steps in front of the lounge

One-piece pool made out of Epoxy-acrylate, sandwich construction with 2 cm insulation in the walls and 3 cm in the floor. 6 degree wall incline and rollcover ledge with integrated steel beam. The pool can be fully covered. Below the coping stones, high water levels of up to 5 cm are possible.



WET LOUNGE



WetLounge® area shallow water zone 2 m - D-Line Ancona with Linear RS step-end and integrated roller shutter cover 1,75 m

Colours: • plain white

- papyrus (27) • silver-grey (24)
- sea blue (26)  • beach (28)

• granicite stone grey

WL 1175
11,75 x 3,7 x 1,5 m

WL 1375*
13,75 x 3,7 x 1,5 m

36.403,36
A AWL 1175 01003

41.432,77
A Awl 1375 01003

40.075,63
A AWL 1175 010..

43.138,66
A Awl 1375 010..

43.512,61
A AWL 1175 01022

47.033,61
A Awl 1375 01022

EQUIPMENT PACKAGE

Water Content m³

43

53

1 Skimmer with water level controller (8 cm), 2 (4) inlet jets, 1 wall low level suction, 1 bottom outlet sump with cover, 1 underwater light, LED white, with transformer

2.605,04
3 540 505

2.907,56
3 540 515

Additional underwater light with screwed-on red brass niche, 100 VA transformer

957,98
A 3 531 355

957,98
A 3 531 355

ACCESSORIES

Decor tiles made of Ezarri glass mosaic, series „Zen“ or „Iris“, installed and grouted at the factory. Item no. Art.-Nr. A 3 916 360

2.856,40
30,9 m

3.226,16
34,9 m

Coping stones granite, grey, 60 x 60 x 6.3 cm, with overhanging nose mottled surface, cut out for the fiberglass skimmer lid

5.878,15
A 3 025 152

6.483,19
A 3 025 172

Stainless steel grabrail, polished, with fixing material, adhesive anchors and polished screen, per piece

1.109,24
A 2 302 030

1.109,24
A 2 302 030

2 underwater lights, LED white, with transformer

1.092,44
A 3 202 080

1.092,44
A 3 202 080

Twinjet counter current unit, double jet system, **Qmax 60 m³** (for pools with roller shutter shaft)

6.088,24
B 3 590 067

6.088,24
B 3 590 067

Safety suction fittings for pools without roller shutter shaft according to DIN EN 16 713
(for pools without roller shutter shaft). **2 x 2 ½"**, suction grille ø350 mm, Qmax = **52,7 m³/h**, additional price

836,13
B 3 590 250

836,13
B 3 590 250

Trijet counter current unit, three jet system, Qmax **90 m³** (for pools with roller shutter shaft)

Alternatives on request.
Example consists of:

8.705,89
B 3 591 121 + B 3 591 110

8.705,89
B 3 591 121 + B 3 591 110

Safety suction fittings for pools without roller shutter shaft according to DIN EN 16 713
(for pools without roller shutter shaft). **3 x 2 ½"**, suction grille ø350 mm, Qmax = **105,4 m³/h**, additional price

1.029,41
B 3 590 260

1.029,41
B 3 590 260

Turbojet turbine unit, Qmax approx. **300 m³/h**, incl. technical shaft.

Colour: black (00) or white (05)

12.563,03
A 3 591 3..

12.563,03
A 3 591 3..

UNDERGROUND ROLLER SHUTTER COVER

Electrical roll-up fixture, drive shaft made from composite material with internal motor with 10 m cable and stainless steel wall mount, installed in the factory; incl. control box and **key switch**

6.483,19
A 22 004 310

6.483,19
A 22 004 310

Roller shutter cover, 6 cm slat width

Cover: **Polycarbonate solar** version

9.252,10
A 01-04 04 236

10.815,13
A 01-04 04 238

Polycarbonate solar, version silver vaporized

10.613,45
A 01-05 04 236

12.441,18
A 01-05 04 238

PVC solar version

6.932,77
A 01-02 04 236

8.109,24
A 01-02 04 238

PVC white (01) / **PVC** grey (03)

4.478,99
A 01-.. 04 236

5.117,65
A 01-.. 04 238

FREIGHT CHARGES on request

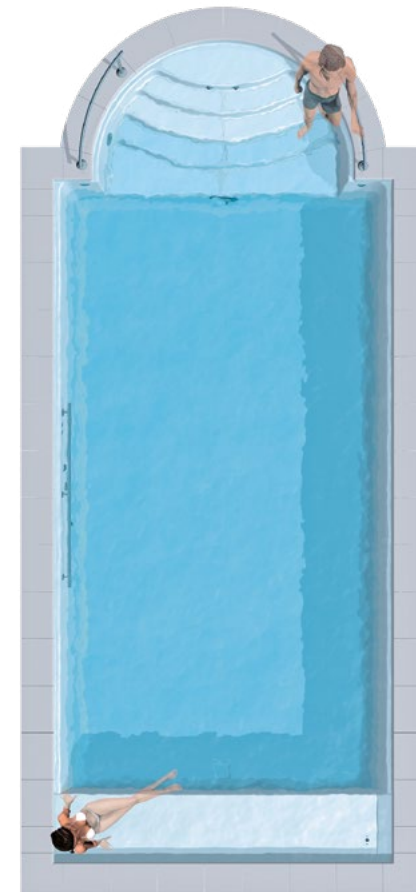
* For reasons of transport the WetLounge® is delivered with flange for on-site installation.

ROM – Traditional pool entry step with 5 full width steps with anti-slip profiled surface.

One-piece polyester pool made out of Epoxy-Acrylate. 5 pool steps, with 6 degree wall incline and rollcover ledge with integrated steel beam. Pool with 3 cm insulation in the floor and 2 cm insulation in the walls.



ROM



ROM

Colours: • plain white

• papyrus (27) • silver-grey (24)
• sea blue (26) **New** • beach (28)

• granicite stone grey

ROM 745 7,45 x 3,7 x 1,5
ROM 845 8,45 x 3,7 x 1,5
ROM 945 9,45 x 3,7 x 1,5
ROM 1045 10,45 x 3,7 x 1,5
ROM 1145 11,45 x 3,7 x 1,5

23.550,42 A Rom 745 010 03
25.037,82 A Rom 845 010 03
26.218,49 A Rom 945 010 03
27.697,48 A Rom 1045 010 03
29.184,87 A Rom 1145 010 03

24.138,66 A Rom 745 010 ..
25.617,65 A Rom 845 010 ..
26.815,13 A Rom 945 010 ..
28.298,32 A Rom 1045 010 ..
29.789,92 A Rom 1145 010 ..

27.533,61 A Rom 745 010 22
29.239,5 A Rom 845 010 22
30.642,86 A Rom 945 010 22
32.352,94 A Rom 1045 010 22
34.058,82 A Rom 1145 010 22

EQUIPMENT PACKAGE

Water Content m³

31 36 41 46 51

1 Skimmer with water level controller (8 cm), 2 (4) inlet jets, 1 wall low level suction, 1 bottom outlet sump with cover, 1 underwater light, LED white, with transformer

2.605,04 3 540 500
2.605,04 3 540 500
2.605,04 3 540 500
2.907,56 3 540 510
2.907,56 3 540 510

Additional underwater light with screwed-on red brass niche, 100 VA transformer

957,98 A 3 531 355
957,98 A 3 531 355
957,98 A 3 531 355
957,98 A 3 531 355
957,98 A 3 531 355

ACCESSORIES

Decor tiles made of Ezarri glass mosaic, series „Zen“ or „Iris“, installed and grouted at the factory. A 3 916 360

2.061,41 22,3 m
2.246,29 24,3 m
2.431,17 26,3 m
2.616,05 28,3 m
2.800,93 30,3 m

Coping stone made of granite, grey, 50 x 35 x 4 cm, stone rounded to the pool side

2.672,27 A 3 021 206
2.857,14 A 3 021 306
3.042,02 A 3 021 406
3.226,89 A 3 021 506
3.411,76 A 3 021 606

Stainless steel grabrail, per pair, polished

1.344,54 A 2 302 010
1.344,54 A 2 302 010
1.344,54 A 2 302 010
1.344,54 A 2 302 010
1.344,54 A 2 302 010

Twinjet counter current unit, double jet system, **Qmax 60 m³** (for pools with roller shutter shaft)

6.088,24 B 3 590 067
6.088,24 B 3 590 067
6.088,24 B 3 590 067
6.088,24 B 3 590 067
6.088,24 B 3 590 067

Safety suction fittings for pools without roller shutter shaft according to DIN EN 16 713

(for pools without roller shutter shaft). **2 x 2 1/2"**, suction grille ø350 mm, **Qmax = 52,7 m³/h**, additional price

836,13 B 3 590 250
836,13 B 3 590 250
836,13 B 3 590 250
836,13 B 3 590 250
836,13 B 3 590 250

Trijet counter current unit, three jet system, Qmax 90 m³

(for pools with roller shutter shaft)

Alternatives on request.
Example consists of:

B 3 591 121 + B 3 591 110 B 3 591 121 + B 3 591 110 B 3 591 121 + B 3 591 110 B 3 591 121 + B 3 591 110 B 3 591 121 + B 3 591 110

Safety suction fittings for pools without roller shutter shaft according to DIN EN 16 713 (for pools without roller shutter shaft). **3 x 2 1/2"**, suction grille ø350 mm, **Qmax = 105,4 m³/h**, additional price

1.029,41 B 3 590 260
1.029,41 B 3 590 260
1.029,41 B 3 590 260
1.029,41 B 3 590 260
1.029,41 B 3 590 260

Turbojet turbine unit, Qmax approx. **300 m³/h**, incl. technical shaft.

Colour: **black (00) or white (05)**

12.563,03 A 3 591 3..
12.563,03 A 3 591 3..
12.563,03 A 3 591 3..
12.563,03 A 3 591 3..
12.563,03 A 3 591 3..

Stainless steel handrail, polished, 2 m long, made of round tubing, with 2 mounting flanges and wall anchors, per piece

743,70 A 2 303 080
743,70 A 2 303 080
743,70 A 2 303 080
743,70 A 2 303 080
743,70 A 2 303 080

2 underwater lights, LED white, with transformer

1.092,44 A 3 202 080
1.092,44 A 3 202 080
1.092,44 A 3 202 080
1.092,44 A 3 202 080
1.092,44 A 3 202 080

UNDERGROUND ROLLER SHUTTER COVER

Roller shutter shaft Integra 2-13 for an extra high water level, extends the pool by 48 cm, with hinged seat bench and 2 inlet nozzles, Additional water content: 370: 1,9 m³

4.798,32 A 2 200 610
4.798,32 A 2 200 610
4.798,32 A 2 200 610
4.798,32 A 2 200 612
4.798,32 A 2 200 612

Electrical roll-up fixture, drive shaft made from composite material with internal motor with 10 m cable and stainless steel wall mount, installed in the factory; incl. control box and **key switch**

6.483,19 A 22 004 310
6.483,19 A 22 004 310
6.483,19 A 22 004 310
6.483,19 A 22 004 310
6.483,19 A 22 004 310

Roller shutter cover, 6 cm slat width

Cover: **Polycarbonate solar** version

6.529,41 A 01-04 03 242
7.264,71 A 01-04 03 243
7.983,19 A 01-04 03 244
8.710,08 A 01-04 03 245
9.453,78 A 01-04 03 246

Polycarbonate solar, version silver vaporized

7.365,55 A 01-05 03 242
8.205,88 A 01-05 03 243
9.042,02 A 01-05 03 244
9.861,34 A 01-05 03 245
10.710,08 A 01-05 03 246

PVC solar version

4.815,13 A 01-02 03 242
5.369,75 A 01-02 03 243
5.911,76 A 01-02 03 244
6.466,39 A 01-02 03 245
7.008,40 A 01-02 03 246

PVC white (01) / **PVC** grey (03)

3.168,07 A 01-.. 03 242
3.512,61 A 01-.. 03 243
3.869,75 A 01-.. 03 244
4.197,48 A 01-.. 03 245
4.542,02 A 01-.. 03 246

FREIGHT CHARGES on request

* Rom 1145 with roller shutter cover: Freight charges on request

Ancona with overflow channel – One-piece polyester pool made out of Epoxy-Acrylate.

Pool step with 5 steps on the right side with anti-slip profiled surface. Pool with 3 cm insulation in the floor and 2 cm insulation in the walls. White plastic overflow gutter, adjustable overflow weir, tiles and epoxy glue for installation on site. 2 overflow drains d125, white PVC grates with 4 corners.



Stone covering of the overflow channel
Fig. left: scope of delivery: insert grate to be covered by stones

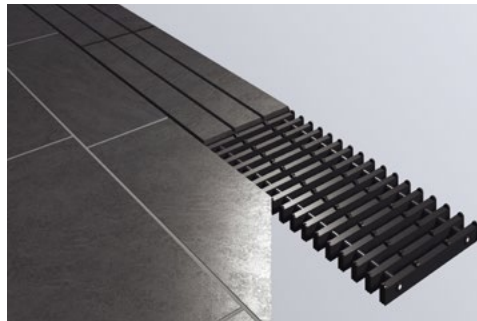
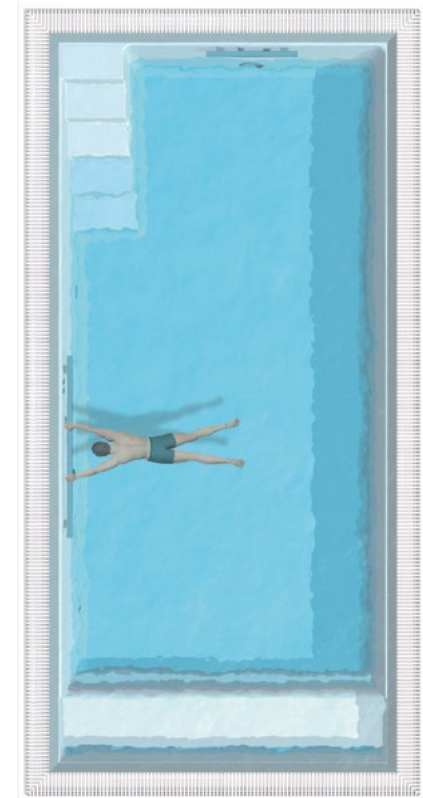


Fig. right: example of on-site finish



D•Line ANCONA with overflow channel



D-Line ANCONA with overflow channel

800 Ü
8,61 x 4,31 x 1,35 m

1000 Ü
10,61 x 4,31 x 1,35 m

Colours: • plain white

- papyrus (27) • silver-grey (24)
- sea blue (26) **New** • beach (28)
- granicite stone grey

38.983,19

A AncÜ 800 010 03

39.693,28

A AncÜ 800 010 ..

46.718,49

A AncÜ 800 010 22

44.563,03

A AncÜ 1000 010 03

45.336,13

A AncÜ 1000 010 ..

53.823,53

A AncÜ 1000 010 22

EQUIPMENT PACKAGE Ü, private use

Water Content m³

34

43

1 wall low level suction, 1 bottom outlet sump with cover,
4 (6) inlet jets 105, vacuum point,
1 underwater light, LED white, with transformer

2.306,72

3 540 135

2.609,24

3 540 145

Additional underwater light with screwed-on red brass niche, 100 VA transformer

957,98

A 3 531 355

957,98

A 3 531 355

ACCESSORIES

Prefabricated kit for pools with overflow channel with gutter, white, adjustable overflow weir of GRP, water-side tiles and epoxy glue for installation on site included

7.903,36

A 2 401 024

9.100,84

A 2 401 026

Prefabricated kit for pools with overflow channel with stone cover, adjustable overflow weir made of GRP, with plastic insert grate for on-site bonding of tiles/stone slabs

10.025,21

A 2 401 224

11.470,59

A 2 401 226

Hot tap sampling point, 2 suction fittings 2", female thread, suction grilles ø200 mm for 14,3 m³/h each, polished

689,08

B 4 230 110

689,08

B 4 230 110

2 underwater lights, LED white, with transformer

1.092,44

A 3 202 080

1.092,44

A 3 202 080

Twinjet counter current unit, double jet system, **Qmax 60 m³** (for pools with roller shutter shaft)

6.088,24

B 3 590 067

6.088,24

B 3 590 067

Safety suction fittings for pools without roller shutter shaft according to DIN EN 16 713

(for pools without roller shutter shaft). **2 x 2 ½"**, suction grille ø350 mm, Qmax = **52,7 m³/h**, additional price

836,13

B 3 590 250

836,13

B 3 590 250

Trijet counter current unit, three jet system, Qmax **90 m³** (for pools with roller shutter shaft)

8.705,89

B 3 591 121 + B 3 591 110

8.705,89

B 3 591 121 + B 3 591 110

Safety suction fittings for pools without roller shutter shaft according to DIN EN 16 713

(for pools without roller shutter shaft). **3 x 2 ½"**, suction grille ø350 mm, Qmax = **105,4 m³/h**, additional price

1.029,41

B 3 590 260

1.029,41

B 3 590 260

Turbojet turbine unit, Qmax approx. **300 m³/h**, incl. technical shaft

12.563,03

A 3 591 3..

12.563,03

A 3 591 3..

Alternatives on request.
Example consists of:

Colour: black (00) or white (05)

WATER TANKS (page 29)

INLINE ROLLER SHUTTER INLINE

Roller shutter installed on the bottom of a pool, roll cover housed in a hinged Inline bench pre-installed, with 2 nozzles 1,5" under the bench, Additional water content: 1,2 m³

8.957,98

A 2 200 355

8.957,98

A 2 200 355

Electrical roll-up fixture, drive shaft made from composite material with internal motor with 10 m cable and stainless steel wall mount, installed in the factory; incl. control box and **key switch**

6.483,19

A 22 004 310

6.483,19

A 22 004 310

Roller shutter cover, 6 cm slat width

Cover: **Polycarbonate solar** version

6.550,42

A 01-04 05 204

8.021,01

A 01-04 05 206

Polycarbonate solar, version silver vaporized

7.542,02

A 01-05 05 204

9.210,08

A 01-05 05 206

PVC solar version

4.911,76

A 01-02 05 204

6.008,40

A 01-02 05 206

PVC white (01) / **PVC** grey (03)

3.130,25

A 01- .. 05 204

3.802,52

A 01- .. 05 206

STEEL WALL SUPPORTS

Galvanized, laminated to the 4 sides of the pool shell in the factory

15.558,82

A 2 400 503

18.226,89

A 2 400 541

For installation on site, non-fixed

13.012,61

A 2 400 603

15.231,09

A 2 400 641

FREIGHT CHARGES on request

LINEAR with overflow channel – One-piece polyester pool made out of Epoxy-Acrylate.

Sandwich construction with 2 cm wall insulation and 3 cm insulation in the floor. White plastic overflow gutter, adjustable overflow weir, tiles and epoxy glue for installation on site. 2 overflow drains d125, white PVC grates with corners.



Stone covering of the overflow channel
Fig. left: scope of delivery: insert grate to be covered by stones

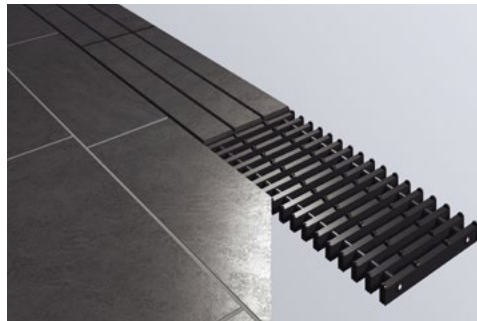


Fig. right: example of on-site finish



D•Line LINEAR with overflow channel



D-Line LINEAR with overflow channel

745 Ü 8,10 x 4,31 x 1,35 m 845 Ü 9,10 x 4,31 x 1,35 m 945 Ü 10,10 x 4,31 x 1,35 m 1045 Ü 11,10 x 4,31 x 1,35 m 145 Ü 12,10 x 4,31 x 1,35 m

Colours: • plain white

- papyrus (27) • silver-grey (24)
- sea blue (26) **New** • beach (28)
- granicite stone grey

37.768,91 A LinÜ 745 010 03	40.537,82 A LinÜ 845 010 03	43.306,72 A LinÜ 945 010 03	46.088,24 A LinÜ 1045 010 03	48.878,15 A LinÜ 1145 010 03
38.352,94 A LinÜ 745 010 ..	41.126,05 A LinÜ 845 010 ..	43.899,16 A LinÜ 945 010 ..	46.672,27 A LinÜ 1045 010 ..	49.449,58 A LinÜ 1145 010 ..
44.831,93 A LinÜ 745 010 22	48.084,03 A LinÜ 845 010 22	51.365,55 A LinÜ 945 010 22	54.638,66 A LinÜ 1045 010 22	57.911,76 A LinÜ 1145 010 22

EQUIPMENT PACKAGE CLASSIC Ü, private use

Water Content m³

1 wall low level suction, 1 bottom outlet sump with cover, 4 (6) inlet jets 105, vacuum point, 1 underwater light, LED white, with transformer

Additional underwater light with screwed-on red brass niche, 100 VA transformer

28	33	37	42	46
2.306,72 3 540 130	2.306,72 3 540 130	2.306,72 3 540 130	2.609,24 3 540 140	2.609,24 3 540 140
957,98 A 3 531 355	957,98 A 3 531 355	957,98 A 3 531 355	957,98 A 3 531 355	957,98 A 3 531 355

ACCESSORIES

Prefabricated kit for pools with overflow channel with gutter, white, adjustable overflow weir of GRP, water-side tiles and epoxy glue for installation on site included

Prefabricated kit for pools with overflow channel with stone cover, adjustable overflow weir made of GRP, with plastic insert grate for on-site bonding of tiles/stone slabs

Hot tap sampling point, 2 suction fittings 2", female thread, suction grilles ø200 mm for 14,3 m³/h each, polished

2 underwater lights, LED white, with transformer

Twinjet counter current unit, double jet system, Q_{max} 60 m³ (for pools with roller shutter shaft)

Safety suction fittings for pools without roller shutter shaft according to DIN EN 16 713

(for pools without roller shutter shaft). **2 x 2 1/2"**, suction grille ø350 mm, Q_{max} = **52,7 m³/h**, additional price

Trijet counter current unit, three jet system, Q_{max} 90 m³

(for pools with roller shutter shaft)

Safety suction fittings for pools without roller shutter shaft according to DIN EN 16 713

(for pools without roller shutter shaft). **3 x 2 1/2"**, suction grille ø350 mm, Q_{max} = **105,4 m³/h**, additional price

Turbojet turbine unit, Q_{max} approx. **300 m³/h**, incl. technical shaft.

Colour: **black (00) or white (05)**

7.718,49 A 2 401 052	8.205,88 A 2 401 053	8.798,32 A 2 401 054	9.390,76 A 2 401 055	9.873,95 A 2 401 056
9.663,87 A 2 401 252	10.386,55 A 2 401 253	11.109,24 A 2 401 254	11.831,93 A 2 401 255	12.558,82 A 2 401 256
689,08 B 4 230 110	689,08 B 4 230 110	689,08 B 4 230 110	689,08 B 4 230 110	689,08 B 4 230 110
1.092,44 A 3 202 080	1.092,44 A 3 202 080	1.092,44 A 3 202 080	1.092,44 A 3 202 080	1.092,44 A 3 202 080
6.088,24 B 3 590 067	6.088,24 B 3 590 067	6.088,24 B 3 590 067	6.088,24 B 3 590 067	6.088,24 B 3 590 067
836,13 B 3 590 250	836,13 B 3 590 250	836,13 B 3 590 250	836,13 B 3 590 250	836,13 B 3 590 250
8.705,89 B 3 591 121 + B 3 591 110	8.705,89 B 3 591 121 + B 3 591 110	8.705,89 B 3 591 121 + B 3 591 110	8.705,89 B 3 591 121 + B 3 591 110	8.705,89 B 3 591 121 + B 3 591 110
1.029,41 B 3 590 260	1.029,41 B 3 590 260	1.029,41 B 3 590 260	1.029,41 B 3 590 260	1.029,41 B 3 590 260
12.563,03 A 3 591 3..	12.563,03 A 3 591 3..	12.563,03 A 3 591 3..	12.563,03 A 3 591 3..	12.563,03 A 3 591 3..

WATER TANKS (page 29)

INLINE ROLLER SHUTTER INLINE

Roller shutter installed on the bottom of a pool, roll cover housed in a hinged Inline bench pre-installed, with 2 nozzles 1,5" under the bench, Additional water content: 1,2 m³

Electrical roll-up fixture, drive shaft made from composite material with internal motor with 10 m cable and stainless steel wall mount, installed in the factory; incl. control box and **key switch**

Roller shutter cover, 6 cm slat width

Cover: **Polycarbonate solar** version

Polycarbonate solar, version silver vaporized

PVC solar version

PVC white (01) / **PVC** grey (03)

8.957,98 A 2 200 355	8.957,98 A 2 200 355	8.957,98 A 2 200 355	8.957,98 A 2 200 355	8.957,98 A 2 200 355
6.483,19 A 22 004 310	6.483,19 A 22 004 310	6.483,19 A 22 004 310	6.483,19 A 22 004 310	6.483,19 A 22 004 310
6.327,73 A 01-04 05 232	7.063,03 A 01-04 05 233	7.781,51 A 01-04 05 234	8.508,40 A 01-04 05 235	9.252,10 A 01-04 05 236
7.268,91 A 01-05 05 232	8.109,24 A 01-05 05 233	8.945,38 A 01-05 05 234	9.764,71 A 01-05 05 235	10.613,45 A 01-05 05 236
4.739,50 A 01-02 05 232	5.294,12 A 01-02 05 233	5.836,13 A 01-02 05 234	6.390,76 A 01-02 05 235	6.932,77 A 01-02 05 236
3.105,04 A 01-.. 05 232	3.449,58 A 01-.. 05 233	3.806,72 A 01-.. 05 234	4.134,45 A 01-.. 05 235	4.478,99 A 01-.. 05 236

STEEL WALL SUPPORTS

Galvanized, laminated to the 4 sides of the pool shell in the factory

For installation on site, non-fixed

14.495,8 A 2 400 509	15.831,93 A 2 400 510	17.147,06 A 2 400 511	18.491,60 A 2 400 530	19.810,92 A 2 400 531
12.117,65 A 2 400 609	13.231,09 A 2 400 610	15.323,53 A 2 400 611	16.428,57 A 2 400 630	17.542,02 A 2 400 631

FREIGHT CHARGES on request

Extensions / Accessories

Overflow channel at the front side

Overflow channel, 47 x 27 cm, connected to the front side of the pool shell but 25 cm lower, incl. glue and filler to fix coping stones on top of the overflow edge (coping stone not included) 2 gutter drains dia 125 mm.

for 320	A 2 115 048	2.974,79
for 370	A 2 115 050	3.315,13
3,20 m channel grating	A 2 115 054	957,98
3,70 m channel grating	A 2 115 055	1.100,84
Pendulum glides with guide rollers	A LAT-005010	100,00



Overflow channel at the front side

Decor tiles made of Ezarri glass mosaic

Decor tiles made of Ezarri glass mosaic, series „Zen“ or „Iris“, installed and grouted at the factory.

Price per meter	A 3 916 360	92,44
-----------------	-------------	--------------



Decor tiles made of Ezarri glass mosaic

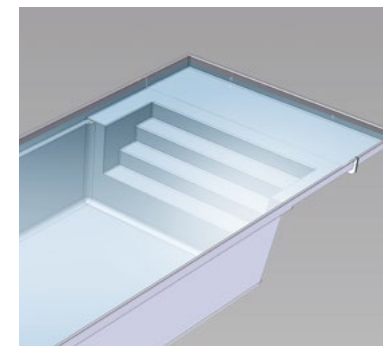


WetLounge® / Shallow water areas

In the same colour as the pool, depth of 23 cm, the full width of the pool, level with the top step. Allowing the shallow water zone to be completely covered by the slatted cover. Incl. 2 inlets 1 1/2", 4 x 8 mm.

New
Available from May 2022!

1 m long for 370 laminated	A 2 115 470	3.752,10
1 m long for 370 flanged	A 2 115 460	5.126,05
1 m long for 320 laminated (not for Ancona 1000 x 320)	A 2 115 440	3.315,13
1 m long for 320 flanged	A 2 115 430	4.676,47
2 m long for 370 laminated	A 2 115 370	5.680,67
2 m long for 370 flanged	A 2 115 360	7.752,10
2 m long for 320 laminated (not for Ancona 1000 x 320)	A 2 115 340	5.021,01
2 m long for 320 flanged	A 2 115 330	7.084,03



WetLounge shallow water areas



Stainless steel handrail long, round tube

Stainless steel handrail long, round tube

polished	A 2 303 080	743,70
----------	-------------	---------------

Stainless steel handrail 1 m, square tube

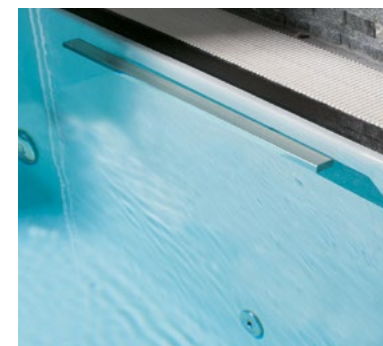
polished, 1 m long, with 2 mounting flange and wall anchors, per piece

A 2 302 086	529,41
-------------	---------------

Stainless steel handrail 2 m, square tube

polished, 2 m long, with 2 mounting flange and wall anchors, per piece

A 2 302 080	739,50
-------------	---------------



Stainless steel handrail long, polished

New Available from May 2022!

Roller shutter shaft Integra "D-Lux"

The roller shutter shaft extends the pool by 55 cm. The flatwater bench consists of two removable parts which allows for easy opening and access for cleaning and maintenance. Integrated light cove for optional ambience lighting.

Pool type: 370	A 2 200 810	7.873,95
320	A 2 200 820	6.718,49

Please note: **Individual shipment** **on request**
 Pool type **320,**
 Pool type **370**

Ambience package LED warm white

consisting of 4 preinstalled HT LED spots warm white incl. transformer 100 VA, cable connection box and wall duct

A 2 200 850 **1.256,30**

Ambience package LED RGB

consisting of 4 preinstalled HT LED spots RGB incl. remote control, control box, cable connection box and wall duct

A 2 200 860 **2.142,86**

Note:
 For different roller shutter shafts please see our accessories and spare parts price list



Roller shutter shaft Integra "D-Lux" (Fig. similar)

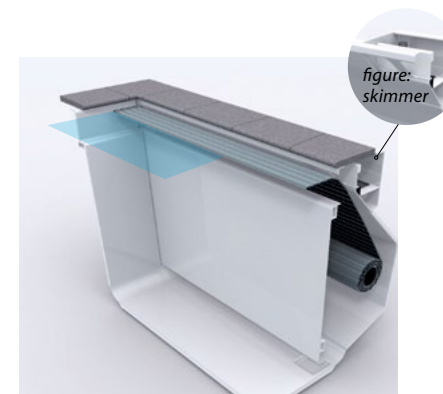
Roller shutter niche for skimmer pools

The roller shutter will be installed behind the pool wall and below the coping stones. It extends the pool by 25 cm and protrudes 50 cm into the pool. For inspection purposes the screen can be totally removed. 2 nozzles are installed in the niche and there is a plane surface for installation of the skimmer. Skimmer is not automatically included and has to be ordered separately! Attention: Pools with 320 cm width, the niche is flanged and bolted.

Pool type: 370	A 2 200 510	9.197,48
320	A 2 200 515	7.844,54

Caution: In the 320 pool, the niche is flanged and screwed in place. In conjunction with the flanging, insulation that is 3 cm thicker is incorporated in the pool base, so that the flange is flush with the pool base on the outside. External height 157 cm!

Please note: Individual shipment!



Roller shutter niche for skimmer pools

Water tank

GRP, insulated with 30 mm PU-foam. Tank in one-piece. Cleaning hole Ø500 mm, PVC fitting for connection to the overflow channel d110 mm, suction connection PVC d75 mm, overflow and drainage fitting.

Water tank 1.000 l capacity

Dimensions: 2,00 x 1,15 x 0,80 m

A 5 310 500 **2.722,69**

Water tank 2.000 l capacity

Dimensions: 2,00 x 1,90 x 0,80 m

A 5 320 100 **4.373,95**

Water level and pump control,

incl. mains water solenoid valve

A 5 350 100 **1.466,39**

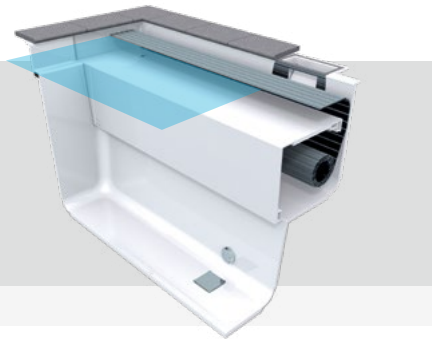


Water tank

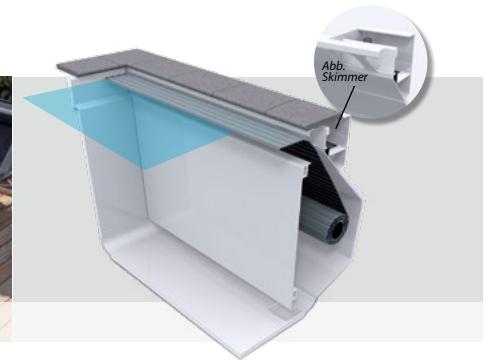
Examples of RivieraPool roller shutter systems



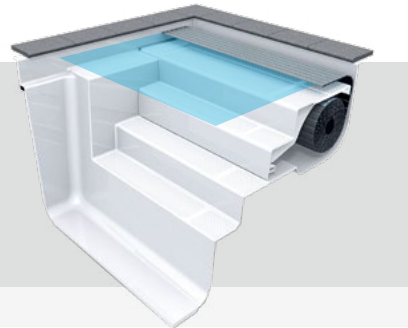
Roller shutter Integra 2-13



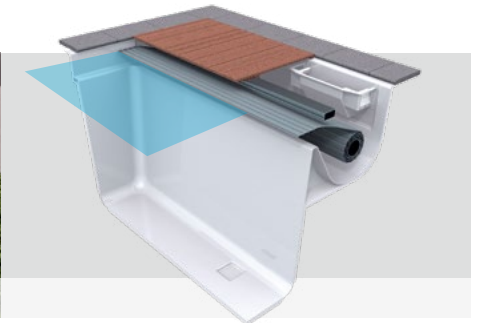
Roller shutter niche



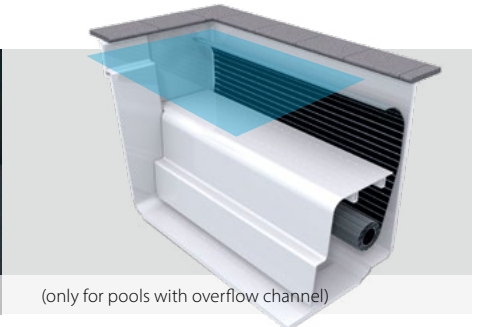
Roller shutter shaft Linear RS



Underground roller shutter shaft



Inline roller shutter



www.rivierapool.com

RivieraPool®

One of the leading manufacturers of prefabricated swimming-pools and spas. BSW member.



RivieraPool Fertigschwimmbad GmbH • Klöcknerstraße 2 • D-49744 Geeste • Tel. +49 5937 660 • E-Mail: info@rivierapool.com

Date: 01.01.2022