

RIVIERA SPAS

FOR PRIVATE INSTALLATIONS

PRICE LIST 2023

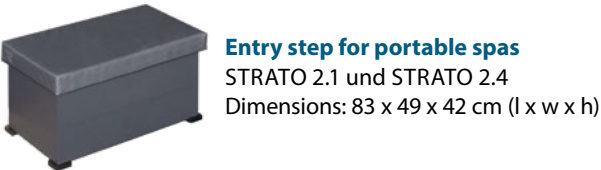
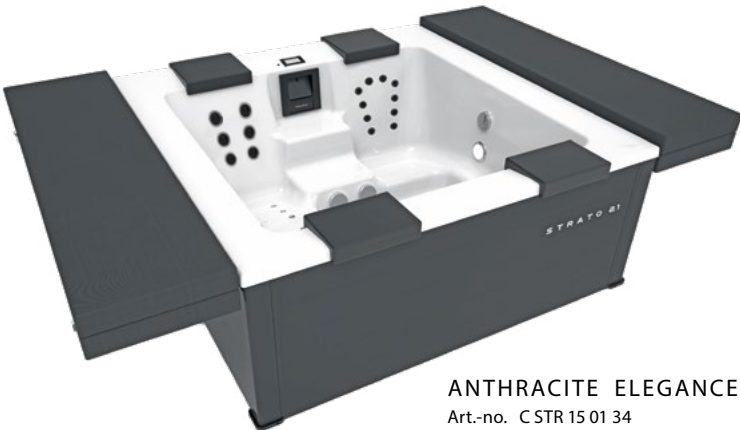
Valid from 01.02.2023 (until revoked)
Sales prices in Euro excl. VAT



www.rivierapool.com

RivieraPool®
PREFABRICATED SWIMMING POOLS • WHIRLPOOLS

STRATO 2.1



STRATO 2.4



Colour combinations: Strato 2.1 and Strato 2.4 see page 14.



Riviera Portable Spa			
		Strato 2.1	Strato 2.4
Basic equipment	Whirlpool type		
	Dimensions in cm outside	216 x 216 x 92 cm	236 x 236 x 92 cm
	Water capacity in ltrs / Shell weight (without accessories)	1.200 l / 380 kg	1.660 l / 440 kg
	Shell sanitary acrylic reinforced with fibreglass	●	●
	PU-hard foam insulation in bottom and corners, insulating panels all around behind the cabinet panels	●	●
	Underwater colour LED-light	2	2
Massage equipment	Supports for hardtop, 4 elements, extendible	●	●
	Headrest	4	5
	Jet Control	2	2
Technical	Superjets	6 + 4	6 + 4 + 4
	Turbojets	2	4
	Microjets	10	10
	Air channel jets	8	10
	Aeration for massage jets	●	●
Accessories	Massage pump 1 x 1,0 kW	●	●
	Massage pump 1 x 1,5 kW (not switchable via remote control)	–	●
	2-speed-pump for filtration and massage	●	●
	Blower 0,5 kW	●	●
	Cartridge filter 50 sqft	1	1
	Ozonator for basic disinfection	●	●
	Heater 3 kW – 230 V	●	●
	Pool-Control with Spa Touch	●	●
	Preparation for heat pump	663,87 A 6 502 100	663,87 A 6 502 100
	Connected load	1 x 230 V / 16 Amp.	1 x 400 V / 16 Amp.
Pool in white/ covering made of aluminium profiles, fine structured surface (Colour table + art.-no. see page 14)		19.928,57 C STR 15 01..	24.096,64 C STR 24 01..
New!	Hardtop insulation cover, 4 parts, RivieraTex, with cover as protection against rain and pollution. Riviera Tex is a 100% dyed polyester fabric, PU-coated, water-resistant Colours: light grey (06), anthracite (08), beige grey (09)	2.142,86 A STR 150 71..	2.247,90 A STR 240 71 ..
	Winter cover made of RivieraTex, Colours: light grey (06), beige grey (09)	684,87 C STR 150 72 ..	756,30 C STR 240 72 ..
	Insulating cover (5 mm foam)	466,39 C STR 150 700	672,27 C STR 240 700
	Lighting for the baseboards, LED white, (see page 12)	508,40 C 7 010 130	508,40 C 7 010 130
	Ambient lighting in the wall panel (see illustration on p. 15)	470,59 C 7 010 135	491,60 C 7 010 136
	LED light	●	●
	Remote control for jet, whirl, light	378,15 C 7 010 001	378,15 C 7 010 001
	Manual vacuum cleaner	184,87 C 7 010 003	184,87 C 7 010 003
	Filter cartridge	74,79 C L8 17-0050	74,79 C L8 17-0050
	Entry step incl. protective cover in colour white (10), anthracite (20), beige grey (30)	789,92 A STR1507..	789,92 A STR1507..
Transport costs		on request	on request
Additional price for a specific delivery time using a lifting platform/lifting truck		on request	on request

Riviera Inground Spa

An inground spa is an incredible permanent fixture to add to your home. With installation available for either the interior or exterior of your home, our inground spa is uniquely designed with a durable and resilient frame that offers maximum enjoyment wherever you choose to place it.

Our pools and spas are meticulously designed with dozens of high-end features that deliver an experience you will never forget. With an intense focus on creating a relaxing, comforting, and therapeutic experience, our design team crafted a massage jet system capable of providing a full spectrum of kneading options. The massage jet system was carefully created to provide a soothing, restorative, and relaxing experience for the entire body, with special attention being spent on the shoulder, neck, lower back, and feet.

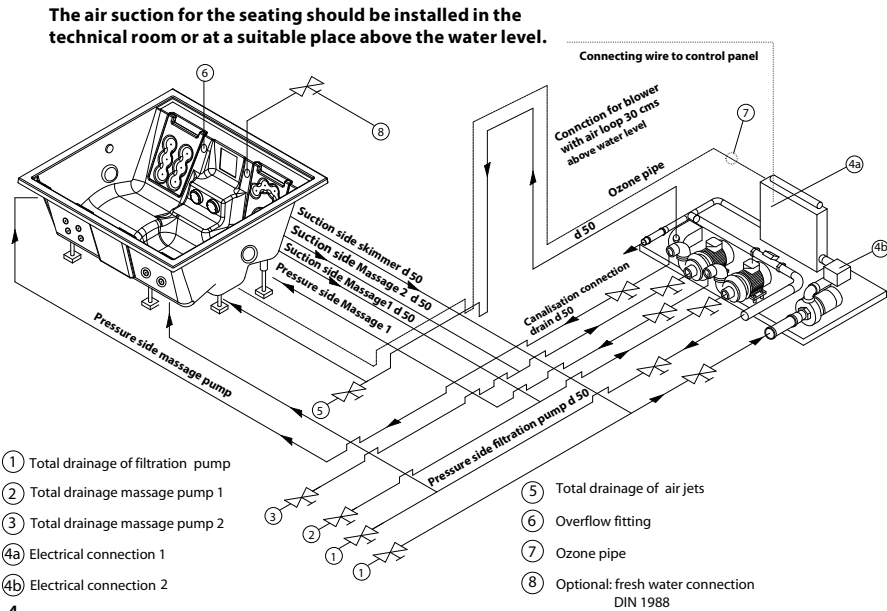
The powerful massage jets harness the power of water and air to create an adjustable and customizable massage experience. In addition to the massage jets, bubble seats can be added to your inground spa and pool experience, adding to the overall effervescent experience. By drawing in air and forcing through the jets and seats, your body will be treated to a therapeutic and healing massage. The heater provides a deep warmth that loosens muscles and calms the nerves. For those who seek even more warmth, our inground spas and pools can be equipped with an optional hot-water heat exchanger that can be directly connected to the boiler in your home, maximizing efficiency and adding extra heat to your experience. In other words, no matter how chilly it might be outside, the heating capacity of your spa and pool will keep you warm.

Featuring fully adjustable settings, features, and amenities found in the Pool Control Panel, including filter cycle programs, the inground spa and pool has everything you need to keep your pool running efficiently, all while keeping you relaxed. When something does go wrong, the LCD screen is able to identify a variety of warning messages or errors to help pinpoint you in the right direction. In addition to environment control panel optionally that is the nerve center of your pool, a convenient remote control comes with our spas – meaning you can make your adjustments without ever leaving the comfort of the water.

Available Colours: white, sea blue, anthracite, limestone

Fittings are light grey with stainless steel face plates.

Inground pools and spas from Riviera offer the ultimate in relaxation, convenience, and simplicity – everything your whirlpool needs for years and years of enjoyment.



RivieraPool®

Riviera inground spas

	Type Whirlpool	Strato 2.0		Strato 2.3		Wave 2.0		Roman 195		Roman 225	
		194 x 194 x 80 cm		226 x 226 x 85 cm		206 x 226 x 85 cm		ø 193 cm / 83 cm		ø 223 cm / 83 cm	
Basic equipment	Dimensions in cm outside	194 x 194 x 80 cm		226 x 226 x 85 cm		206 x 226 x 85 cm		ø 193 cm / 83 cm		ø 223 cm / 83 cm	
	Water capacity in ltrs / Shell weight (without accessories)	1.300 l /ca. 110 kg		1.800 l /ca. 170 kg		1.710 l /ca. 135 kg		1.100 l /ca. 100 kg		1.680 l /ca. 170 kg	
	Shell from sanitary grade acrylic with fibreglass reinforcement	●		●		●		●		●	
	Adjustable supporting frame	●		●		●		●		●	
	PU foam insulation	●		●		●		●		●	
Massage equipment	Halogen underwater light 50 W -12 V	1		1		1		1		1	
	Headrests	4		4 (5 th place optional)		4		—		—	
	Superjets	6 + 4		6 + 4		6		6		6	
	Turbojets	2		2		4		4		4	
Technical	Microjets	10		10		10		10		10	
	Air channel jets	8		10		16		16		16	
	Hygiene and controls										
	Flat skimmer with cartridge in plant room	—		—		—		●		●	
Accessories	Skim filter with cartridge	●		●		●		—		—	
	Distribution valve	2		2		2		2		2	
	Sales prices in Euro excl. VAT	13.075,63		14.453,78		13.764,71		13.252,10		14.647,06	
	Colours: white sea blue	C STR 110 001 C STR 110 002		C STR 210 001 C STR 210 002		C WAV 110 001 C WAV 110 002		C ROM 110 001 C ROM 110 002		C ROM 210 001 C ROM 210 002	
Accessories	anthracite (25), dark grey limestone (26), light grey	13.642,86 C STR 110 025 C STR 110 026		14.747,90 C STR 210 025 C STR 210 026		14.336,13 C WAV 110 025 C WAV110 026		13.810,92 C ROM 110 025 C ROM 110 026		15.214,29 C ROM 210 025 C ROM 210 026	
	Technical equipment ELS										
	Filter pump	1		1		1		1		1	
	Massage pump	2		2		2		2		2	
Accessories	Heater kW	3		3 + 2		3 + 2		3 + 2		3 + 2	
	Blower	1		1		1		1		1	
	Pool control with Spa Touch	●		●		●		● * 2		● * 2	
	Preparation for heat pump	672,27 A 6 502 200		672,27 A 6 502 200		672,27 A 6 502 200		672,27 A 6 502 200		672,27 A 6 502 200	
Accessories	Connected load in kW	1 x 230 V - 16 A		2 x 230 V - 16 A		2 x 230 V - 16 A		2 x 230 V - 16 A		2 x 230 V - 16 A	
	Sales prices in Euro excl. VAT	4.247,90 C 6 500 151		4.882,35 C 6 500 152		4.882,35 C 6 500 152		7.155,46 C 6 500 101		7.155,46 C 6 500 101	
	Technical equipment PWW identical to ELS *1 but with heat exchanger 40 kW in addition to 1 x 3 kW electric heater	5.067,23 C 6 500 161 1 x 230 V - 16 A		5.521,01 C 6 500 162 1 x 230 V - 16 A		5.521,01 C 6 500 162 1 x 230 V - 16 A		7.823,53 C 6 500 111 1 x 230 V - 16 A		7.823,53 C 6 500 111 1 x 230 V - 16 A	
	Remote control for jet, whirl, light	378,15 C 7 010 001		378,15 C 7 010 001		378,15 C 7 010 001		incl.		incl.	
Accessories	Vacuum Hoover manual	184,87 C 7 010 003		184,87 C 7 010 003		184,87 C 7 010 003		184,87 C 7 010 003		184,87 C 7 010 003	
	Insulating cover white (5 mm foam)	466,39 C STR 110 700		684,87 C STR 210 700		529,41 C WAV 110 700		579,83 C 5 260 021		655,46 C 5 260 005	
	Hardtop insulation cover made of RivieraTex, 4-pieces, Colours: anthracite (08), beige grey (09), light grey (06)	1.726,89 A STR110 72..		2.247,90 A STR210 72..		2.142,86 A WAV210 72..		—		—	
	Hardtop insulation cover "Wind & Weather", made of RivieraTex 4-pieces weather proof, (2-pieces by Roman 195 + 225) Colours: anthracite (08), beige grey (09), light grey (06)	1.915,97 A STR110 73..		2.344,54 A STR210 73..		2.243,70 A WAV210 73..		1.420,17 A Rom110 71..		1.697,48 A Rom210 71..	
Accessories	Additional Massage Equipment opposite the steps, 4 multi-jets, 1 Multi-Masterjet, with its own pump 1,5 kW and circuit (not switchable via remote control), connection 400 V	—		1.378,15* 1 C 7 010 142		—		—		—	
	Grabrail, stainless steel, polished	504,20 B 5 220 000		504,20 B 5 220 000		504,20 B 5 220 000		504,20 B 5 220 000		504,20 B 5 220 000	
	Filter cartridge per piece	74,79 C L8 17-0050		74,79 C L8 17-5000		74,79 C L8 17-5000		105,88 C 6 007 000		105,88 C 6 007 000	
	Inlet fitting made of PVC, colours: white (21), black 22)	247,90 A 3 133 1..		247,90 A 3 133 1..		247,90 A 3 133 1..		247,90 A 3 133 1..		247,90 A 3 133 1..	
Accessories	Overflow fitting made of PVC, colours: white (21), black 22)	247,90 A 3 133 1..		247,90 A 3 133 1..		247,90 A 3 133 1..		247,90 A 3 133 1..		247,90 A 3 133 1..	
	Transport costs	on request		on request		on request		on request		on request	

* 1 not switchable via remote control, 400 V connection

* 2 not installed in the pool, installation in technical room or bathroom.

● = included

— = not included

Riviera Highline Spas

The next level in relaxation and luxury, Riviera Highline Spas are available for permanent installation anywhere inside or outside of your home. Designed for indoor or outdoor use, this spa will treat you to years of therapeutic massage, comfort, and relaxation.

Complete with an adjustable support frame designed to meet your specific needs, including an overflow gutter. The Riviera Highline spa is self-supporting and comes standard with adjustable legs. Constructed from sanitary and durable acrylic, the shell of the pool includes specially designed massage jets that are engineered, installed, and plumbed within the factory. The nozzles are designed and arranged to hit the major spaces of tension within the body, offering deep, soothing, and restorative massage that delights. Whether you want a deep massage or a light kneading, the adjustable jets will provide the exact level of complete relaxation you desire.

The powerful massage jets harness the power of water and air to create an adjustable and customizable massage experience. In addition to the massage jets, bubble seats can be added to your inground spa and pool experience, adding to the overall effervescent experience. By drawing in air and forcing through the jets and seats, your body will be treated to a therapeutic and healing massage that combines the soothing heat from the water with air being drawn from outside. The 5 KW heater provides a deep warmth that loosens muscles and calms the nerves. For those who seek even more warmth, our inground spas and pools can be equipped with an optional hot-water heat exchanger that can be directly connected to the boiler in your home, maximizing efficiency and adding extra heat to your experience. In other words, no matter how chilly it might be outside, the heating capacity of your spa and pool will keep you warm.

Featuring fully adjustable settings, features, and amenities found in the Pool Control Panel, including filter cycle programs, the inground spa and pool has everything you need to keep your pool running efficiently, all while keeping you relaxed. When some-

thing does go wrong, the LCD screen is able to identify a variety of warning messages or errors to help pinpoint you in the right direction. In addition to the environment control panel that is the nerve center of your pool, a convenient remote control comes optionally with our spas – meaning you can make your adjustments without ever leaving the comfort of the water. The optional technical package comes complete with a heater, circulation pump, filter vessel, massage pumps, jets, and blowers. This package includes separate installation away from the spa itself, isolating the equipment in another space, cutting down on potentially intrusive noises and visuals, delivering a truly calming sensory experience without the clutter of equipment. The distance between the spa and the equipment should not exceed 10 m, and the overflow tank must be installed below the water level.

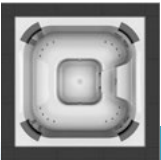
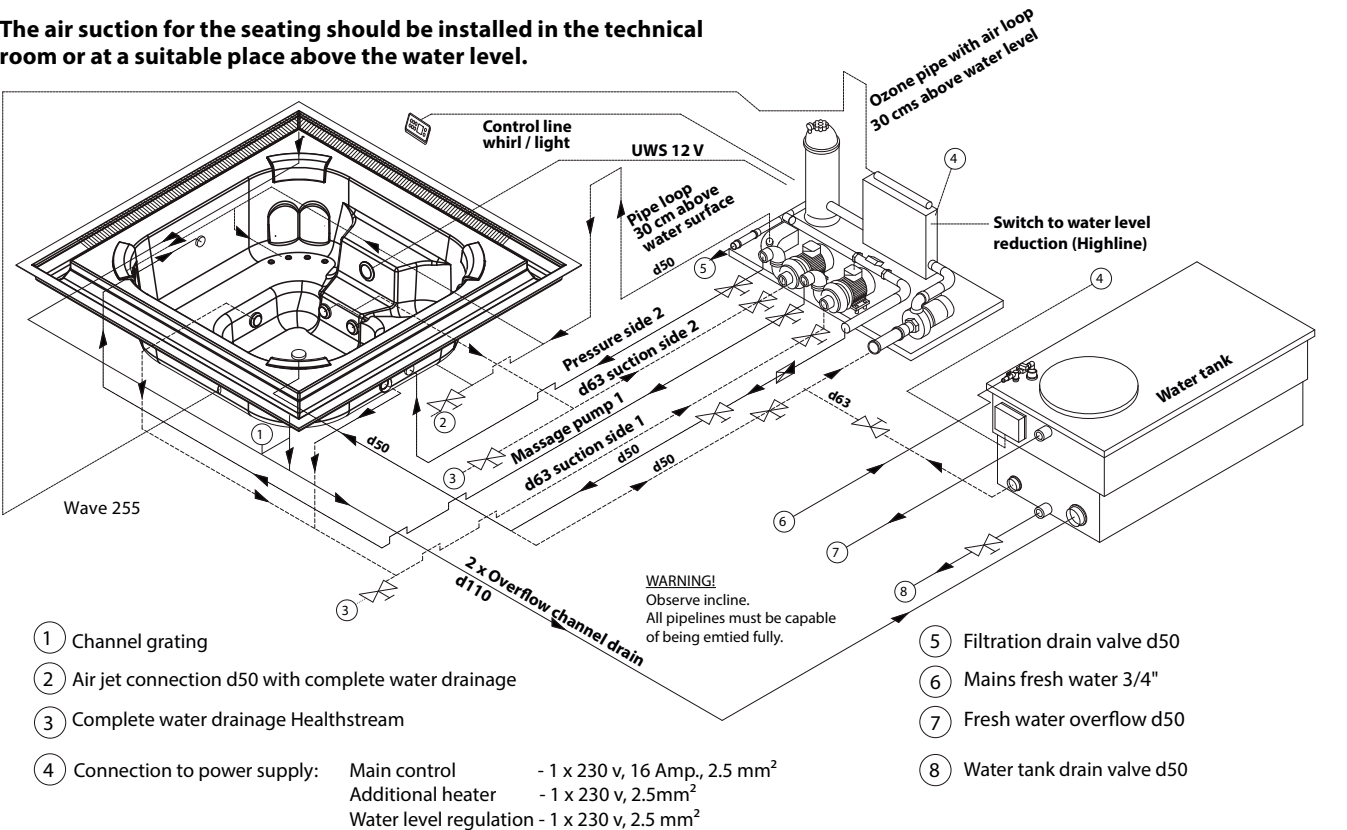
The Wave 255 operates as an overflow spa solution, allowing for rapid adjustment and capable of performing like a skimmer spa. The pool is also covered by an insulated cover, saving energy and keeping the pool ready to use at a moment’s notice.

Highline Spas from Riviera Pools offer everything you could ever dream of in your whirlpool experience, offering years of relaxation, comfort, and luxury.



Overflow channel covered by coping stones.

The air suction for the seating should be installed in the technical room or at a suitable place above the water level.



Riviera Wave			
	Type Whirlpool	Wave 255 Highline	Wave 255
	Dimensions in cm Water capacity in ltrs Shell weight (without Accessories + Technique pallet)	254 x 254 x 77 cm ca. 1.680 l 170 kg	254 x 254 x 77 cm ca. 1.680 l 170 kg
Basic equipment	Shell from sanitary grade acrylic with fibreglass reinforcement	●	●
	PU foam insulation	●	●
	Adjustable supporting frame and channel reinforcement	●	●
	Halogen underwater light 50 W -12 V	1	1
	Channel grating, PVC	—	●
	Support for gutter coping stone	●	—
	Channel drains, PVC	2 x d 110	2 x d 110
Massage equipment	Superjets	6	6
	Microjets	10	10
	Turbojets	4	4
	Volcano jet	1	1
	Air channel seats	4	4
	Jet Control	2	2
	Sales prices in Euro excl. VAT		
	Colours: white (01), sea blue (02)	18.361,34 C WAV 210 0..	17.781,51 C WAV 220 0..
	anthracite (25), dark grey, limestone (26), light grey	19.710,08 C WAV 210 0..	19.117,65 C WAV 220 0..
Technical	Technical package EL/Ü		
	Pool control with Spa Touch	1	1
	Massage pump	2	2
	Filter pump	1	1
	Cartridge filter 50sq/ft	1	1
	Blower	1	1
	Ozone basic disinfection	●	●
	Transformer 50 W-12 V	●	●
	Electric heater 230 V - 2 + 3 kW, Total connected load 2 x 230 V -16 Amp.	●	●
	Motorised changeover valve	1	—
Accessories	Preparation for heat pump	672,27 A 6 502 200	672,27 A 6 502 200
	Sales prices in Euro excl. VAT	8.718,49 C 6 500 300	6.777,31 C 6 500 100
	Technical package PWW as technical package EL but with heat exchanger 40 kW in addition to 1 x 3 kW electric heater, 1 x 230 V-16 Amp.	9.378,15 C 6 500 310	7.445,38 C 6 500 110
	Power Pak, 2 massage pumps, 1 blower, transformer 50 VA, 4 Piezo-buttons and switchbox 400 V	8.046,22 C 6 500 325	6.075,63 C 6 500 123
	Water tank 1.000 l capacity with water level regulator, dimensions: 2,00 x 1,15 x 0,80 m	4.504,20 A 5 310 600	4.504,20 A 5 310 600
	Insulating cover (5 mm foam)	920,17 C WAV 210 700	920,17 C WAV 210 700
	Remote control for jet, whirl, light	378,15 C 7 010 001	378,15 C 7 010 001
	Vacuum Hoover manual	184,87 C 7 010 003	184,87 C 7 010 003
	Grabrail, stainless steel, polished	504,20 B 5 220 000	504,20 B 5 220 000
	Overflow channel lighting	1.701,68 A 2 012 175	1.701,68 A 2 012 175
	Filter cartridge per piece	105,88 C 6 007 000	105,88 C 6 007 000
	Transport costs	on request * 1	on request * 1

* 1 A crane or a forklift with long forks is required for the unloading.

● = included

— = not included

Overflow Spas

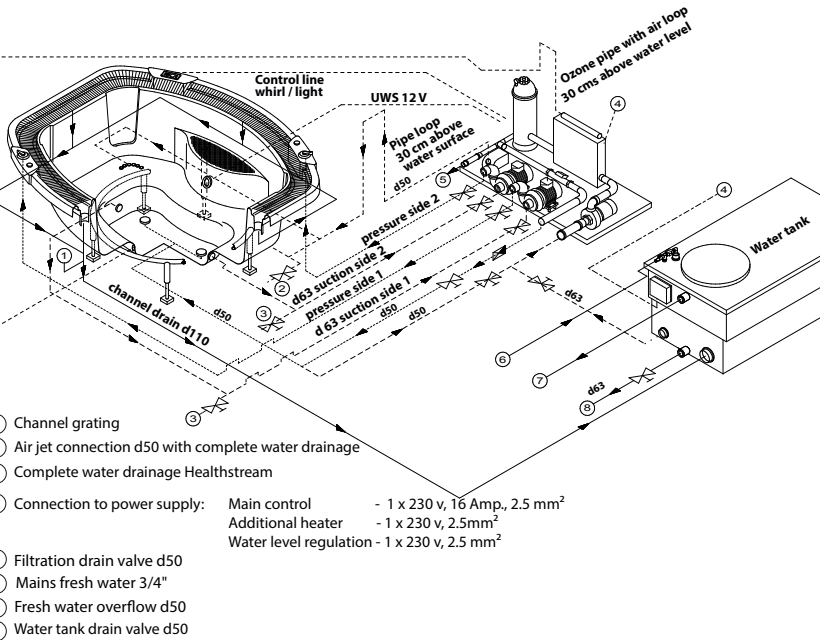
The ultimate whirlpool experience, the Overflow Spa is designed for years and years of luxurious relaxation. Elegantly designed, the Overflow Spa at Riviera Pools is our most exclusive pool to date. Riviera Overflow Spas are available for permanent installation anywhere inside or outside of your home. Designed for indoor or outdoor use, this spa will treat you to years of therapeutic massage, comfort, and relaxation.

The innovative design and meticulous engineering of the Overflow Spa offers the most massage features of any of our pools. Constructed from sanitary and durable acrylic, the shell of the pool includes of specially designed massage jets that are engineered, installed, and plumbed within the factory. The nozzles are designed and arranged to hit the major spaces of tension within the body, offering deep, soothing, and restorative massage that delights. Whether you want a deep massage or a light kneading, the adjustable jets will provide the exact level of complete relaxation you desire. The Overflow Spa is designed for the discerning pool owner who demands nothing but the ultimate in soothing relaxation.

Featuring fully adjustable settings, features, and amenities found in the Pool Control Panel, including filter cycle programs, the and pool has everything you need to keep running efficiently, all while keeping you relaxed. With adjustable jets, flow, lights and the Overflow Spa delivers a truly unique experience every time you step into the pool. Designed for easy maintenance and repair, this spa offers years of stress-free operation. When something does go wrong, the screen is able to identify a variety of warning messages or errors to help pinpoint you in the right direction. In addition to the environment control panel that is the nerve center of your pool, a convenient remote control comes optionally with our spas – meaning you can make your adjustments without ever leaving the comfort of the water.

The optional technical package comes complete with a heater, circulation pump, filter vessel, massage pumps, jets, and blowers. This package includes separate installation away from the spa itself, isolating the equipment in another space, cutting down on potentially intrusive noises and visuals, delivering a truly calming sensory experience without the clutter of equipment. The distance between the spa and the equipment should not exceed 10 m, and the overflow tank must be installed below the water level.

Ultimate relaxation. Ultimate luxury. Ultimate flexibility. The Overflow Spa is your ultimate whirlpool experience, designed to pamper you for years to come.



Overflow Spas				
Basic equipment	Type Whirlpool	Relaxo 255	Roman 255	Roman 285
	Dimensions in cm	255 x 255 x 104 cm	ø 252 / 87 (74) cm	ø 281 / 87 (74) cm
	Water capacity in ltrs	1.600 l	1.420 (1.320) l	2.020 (1.900) l
	Shell weight (without accessories)	170 kg	170 (160) kg	215 (205) kg
	Shell sanitary acrylic shell Fibreglass reinforcement	●	●	●
	PU foam insulation	●	●	●
	Adjustable supporting frame and channel reinforcement	●	●	●
	8 adjustable overflow channel supports	—	●	●
	Halogen underwater light 50 W -12 V	1	—	1
	Channel grating, PVC	●	●	●
Massage equipment	Channel drains, PVC	2 x d 125	1 x d 110	1 x d 110
	Shortened edge for tiling "Stone Edge" (illustrations + description see page 13)	—	● 504,20 WPZ01000030	● 529,41 WPZ01000040
	Superjets	—	6	6
	Microjets	10 + 4	8	8
	Multi-Masterjet	1	—	—
	Multijets	2	—	—
	Turbojets	2	4	4
	Hydrojets	—	—	—
	Volcano jet	1	floor drain	floor drain
	Air channel jets	2 x 6	70	70
Technical	Air Control	2	air suction	air suction
	Jet Control	2	—	—
	Sales prices in Euro excl. VAT	16.588,24	20.613,45	23.281,51
	Colours: white (01), sea blue (02)	C 1 350 ..	B Rom 310 0..	B Rom 410 0..
	anthracite (25), dark grey, limestone (26), light grey	17.953,78	22.033,61	24.634,45
		C 1 350 ..	B Rom 310 0..	B Rom 410 0..
	Technical package EL/Ü			
	Pool control with Spa Touch	1	1	1
	Massage pump	2	2	2
	Filterpump	1	1	1
Accessories	Cartridge filter container 50 sqft	1	1	1
	Blower	1	1	1
	Ozonator for basic disinfection	●	●	●
	Transformer 50 W-12 V	●	●	●
	Electric heater 230 V - 2 + 3 kW,	●	●	●
	Total connected load 2 x 230 V -16 Amp.	●	●	●
	Sales prices in Euro excl. VAT	6.777,31	7.302,52	7.302,52
		C 6 500 100	C 6 500 102	C 6 500 102
	Technical package PWW			
	identical to EL/Ü but with heat exchanger 40 kW in addition to 1 x 3 kW electric heater, 1 x 230 V-16 Amp.	7.445,38	7.970,59	7.970,59
Accessories		C 6 500 110	C 6 500 112	C 6 500 112
	Power Pak , 2 massage pumps, 1 blower, transformer 50 VA, 4 Piezo-buttons and switchbox 400 V	6.075,63	6.075,63	6.075,63
		C 6 500 123	C 6 500 123	C 6 500 123
	Water tank 1.000 l capacity with water level regulator, dimensions: 2,00 x 1,15 x 0,80 m	4.504,20	4.504,20	4.504,20
		A 5 310 600	A 5 310 600	A 5 310 600
	Insulating cover (5 mm foam)	920,17	848,74	928,57
		C 5 260 024	C 5 260 022	C 5 260 010
	Manual vacuum cleaner	184,87	184,87	184,87
		C 7 010 003	C 7 010 003	C 7 010 003
	Grabrail, stainless steel, polished	504,20	504,20	504,20
Accessories		B 5 220 000	B 5 220 000	B 5 220 000
	Anti-slip coating of entry steps, color: transparent	500,00	500,00	500,00
		B 2 200 121	B 2 200 121	B 2 200 121
	Filter cartridge per piece	105,88	105,88	105,88
		C 6 007 000	C 6 007 000	C 6 007 000
	Transport costs	on request	on request	on request

Head rests for Strato 2.1/Strato 2.4

Colours: light grey, dimensions: 272 x 400 mm	100,84 C WPZ 00 700 060
anthracite, dimensions: 272 x 400 mm	100,84 C WPZ 00 700 061
light grey, dimensions: 363 x 400 mm (skimmer side)	100,84 C WPZ 00 700 070
anthracite, dimensions: 363 x 400 mm (skimmer side)	100,84 C WPZ 00 700 071



Headrest for Strato 2.1 + 2.4

Head rests for Wave

incl. 2 fixing bolts

Colour: grey	84,03 C LO 210 050 502
white	84,03 C LO 210 050 503



Headrest for Wave

Neu! available soon

Head rests for 2.0 und 2.3

71,43
WPZ 6 502 150



Headrest for Strato 2.0/2.3

Headrest for Strato 2.0/ Strato 2.3

hinged, black, incl. 2 mounting pins

71,43
WPZ 6 502 150

Headrest cover

Riviera CS for Strato 2.0 / 2.3

Colours: light blue	per piece	75,63 C WPZ 00 700 052
blackberry	per piece	75,63 C WPZ 00 700 053
grey	per piece	75,63 C WPZ 00 700 054



Headrest cover for Strato 2.0/2.3

Entry step for Strato 2.1/Strato 2.4

Dimensions: 83 x 49 x 42 cm (L x W x H), aluminum profile with a fine structured surface lid can be opened, with RivieraTex cover

Colours: light grey	789,92 A STR 150 710
anthracite	789,92 A STR 150 720
beige grey	789,92 A STR 150 730



Step for Strato 2.1/ Strato 2.4

Hardtop cover for inground spas

4 parts,made of RivieraTex, RivieraTex is a 100% dyed polyester fabric, PU-coated, water-repellent (colour overview: see page 15)

Colours: anthracite (08)
beige grey (09)
light grey (06)

Price
see inside



Hardtop cover made of RivieraTex

Cover for portable spa hardtops as protection against pollution and rain, made of RivieraTex.

RivieraTex is a 100% dyed polyester fabric, PU-coated, water-repellent (coulour overview: see page 15)

Strato 2.0 (port.)	light grey (06), anthracite (08), beige grey (09)	277,31 C STR 110 75 ..
Strato 2.1 (port.)	light grey (06), anthracite (08), beige grey (09)	319,33 C STR 150 73 ..
Strato 2.3 (port.)	light grey (06), anthracite (08), beige grey (09)	369,75 C STR 210 75 ..
Strato 2.4 (port.)	light grey (06), anthracite (08), beige grey (09)	357,14 C STR 240 73 ..
Wave 2.0 (port.)	light grey (06), anthracite (08), beige grey (09)	369,75 C WAV 120 73 ..



Cover for hardtop, Strato portable

Winter cover for portable spas as protection against pollution and rain, made of RivieraTex.

RivieraTex is a 100% dyed polyester fabric, PU-coated, water-repellent (coulour overview: see page 15)

Strato 2.0 (portable)	light grey (06), beige grey (09)	550,42 C STR 110 74 ..
Strato 2.1 (portable)	light grey (06), beige grey (09)	684,87 C STR 150 72 ..
Strato 2.3 (portable)	light grey (06), beige grey (09)	756,30 C STR 210 74 ..
Strato 2.4 (portable)	light grey (06), beige grey (09)	756,30 C STR 240 72 ..
Wave 2.0 (portable)	light grey (06), beige grey (09)	756,30 C WAV 120 72 ..



Winter cover for Strato portable

Hardtop cover "Wind & Weather" for inground spas

with slope, 4 parts, made of RivieraTex, RivieraTex is a 100% dyed polyester fabric, PU-coated, water-repellent (coulour overview: see page 15)

Colours: anthracite (08)
beige grey (09)
light grey (06)

Price
see inside

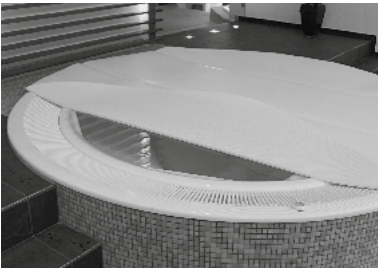


Hardtop cover "wind & weather" with slope (figure similar)

Insulating cover

5 mm

Price
see inside



Insulating cover

LED lights for inground spas
WP-LED-UWS, 4/4, 3.0, 24 V DC, **warm white**,
face plate: stainless **steel polished**, with 5 m silicon cable

588,24
A 4 534 325

Ditto RGBW

LED light
WP-LED-UWS, 4/4, 3.0, 24 V DC, **warm white**,
face plate: **white**, with 5 m silicon cable

588,24
A 4 534 326

Ditto RGBW

504,20
A 4 122 180

Halogen light, 12 V / 50 W, AC adapter

25,21
B 999 001

Pre-assembly



WP LED light 4/4



WP Halogen light

Power supply 100-277 V AC/24 V DC, 200 W for two
21-piece, for 15-piece, or 6 x 3-piece high-power
LED 2.0, monochrome

697,48
A 3 534 030

Electrical ballast 100-277 V AC/24 V DC, 200 W for two
21-piece, for 15-piece, or six 3-piece high-power
LED 2.0, RGB

1.197,48
A 3 534 040

LED-remote control for coloured LED lights
consisting of:

Hand-held remote control incl. receiver, antenna
and cable

756,30
A 3 534 050

Remote control
for jet, whirl, light

378,15
C 7 010 001



Remote control



Remote control

Lighting of the baseboards
LED white

Price
see inside



Lighting of the baseboards, LED white

Stainless steel grabrail
stainless steel, polished, with connection kit
(2 grabrails recommended) per piece

504,20
B 5 220 000



Grabrail, stainless steel, polished

Manual vacuum cleaner
For a simple dirt suction on the pool ground.

184,87
C 7 010 003



Manual vacuum cleaner

New!

Shortened edge for tiling "Stone Edge"
The Stone Edge enables stone or tile material to be applied flush with
the floor. This means that the usual white edge is no longer present
and considerably enhances the appearance of the whirlpool. The
pool appears slimmer and integrates elegantly into the surroundings.

Roman 255

504,20
WPZ01000030

Roman 285

529,41
WPZ01000040



ELEGANCE



ANTHRACITE ELEGANCE
Strato 2.1 Art.-no. C STR 15 01 34
Strato 2.4 Art.-no. C STR 24 01 34



WHITE ELEGANCE
Strato 2.1 Art.-no. C STR 15 01 31
Strato 2.4 Art.-no. C STR 24 01 31



BEIGE ELEGANCE
Strato 2.1 Art.-no. C STR 15 01 35
Strato 2.4 Art.-no. C STR 24 01 35

LITE



BEIGE LITE
Strato 2.1 Art.-no. C STR 15 01 33
Strato 2.4 Art.-no. C STR 24 01 33

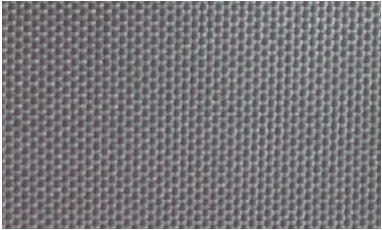


ANTHRACITE LITE
Strato 2.1 Art.-no. C STR 15 01 32
Strato 2.4 Art.-no. C STR 24 01 32

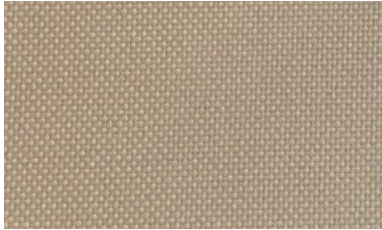
Designpackage	Pool/acryl	Covering	Corner	Headrest	Steps	Cover
WHITE ELEGANCE	white	white	white	light grey	white	light grey
ANTHRACITE ELEGANCE	white	anthracite	anthracite	anthracite	anthracite	anthracite
BEIGE ELEGANCE	white	beige-grey	beige-grey	light grey	beige-grey	beige-grey
BEIGE LITE	white	beige-grey	white	light grey	beige-grey	beige-grey
ANTHRACITE LITE	white	anthracite	white	anthracite	anthracite	light grey

RIVIERATEX-COLOURS:

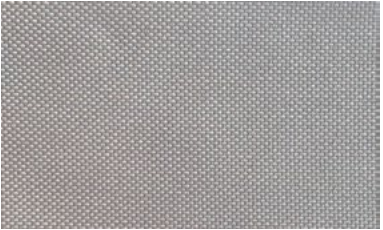
Anthracite (08)



Beige grey (09)



Light grey (06)



- Used for:
- hardtop covers
 - winter covers
 - cover of the entry step for portable spas

HARDTOP COVER / WINTER COVER



Hardtop cover, 4 parts



Winter cover as protection against pollution and rain

New!

AMBIENT LIGHTING



Ambient lighting in the front panel

ENTRY STEPS



Anthracite
A STR150720 (incl. protective cover)

Beige grey
A STR150730 (incl. protective cover)

White
A STR150710 (incl. protective cover)

The photos shown are simply examples and can only approximate to the actual appearance due to printing limitations. Your RivieraPool specialist retailer can show you the genuine colours.

PRODUCTION FACILITIES IN D-GEESTE-DALUM AND SK-TRNAVA



Geeste-Dalum



SK-Trnava



Geeste-Dalum



Date: 01.01.2023

This list does not contain details relating to prefabricated swimming pools or cold dip pools.
Please request our documentation if required, or visit us at:

www.rivierapool.com

RivieraPool®

One of the leading
manufacturers of
prefabricated swimming
and spas.
BSW member.

