

PRICELIST 2021

Valid from 01/01/21 until 31/12/21

Sales prices in Euro excl. VAT.

rivierapool.com

P R E F A B R I C A T E D S W I M M I N G P O O L S

RivieraPool[®]

PREFABRICATED SWIMMING POOLS • WHIRLPOOLS

About our pools

RivieraPool-swimming pools are made of Epoxy-Acrylate, a material that, among other applications, has been used for many years in the marine industry, due to its high degree of strength and flexibility. It is particularly suitable for swimming pool production as it can be shaped to form fixtures for technical components in the pool. Riviera pools can therefore be equipped with recesses for the floor drain, installation shaft, support edge for roller shutters and different styles of pool steps. The swimming pool shell is a sandwich construction, reinforced with PU foam. This ensures that the pool surfaces remain smooth and rigid and are insulated against temperature losses.

The prefabricated swimming pool shell enables easy transportation due to the low structural weight. Your pool is a high-quality product distinguished by unique characteristics. It resists UV light and deformation and is only mildly sensitive to temperature changes. All component fittings are made from polished stainless steel.

Quality:

The AVK quality seal confirms that production and test criteria of the AVK (Federation of Reinforced Plastics) have been adhered to. It is thus proof of the long-term resistance of surfaces to osmosis and fading.

Distribution channels:

All our swimming pool systems are distributed exclusively through retailers specialising in swimming pool, sauna, sanitary and heating installation who, with their specialised planning and installation personnel, are serious partners for customers and architects.

Installation costs:

Prices for on-site installation and the required installation material are not included in this price list, as these services are provided by a specialised company and invoiced separately.

Transportation costs:

Specified prices are generally ex-works. Shipping and insurance to the limit of the receiver's site accessible to road traffic are included in the transportation costs. Special costs, such as rail transport loading, ferries etc. are borne by the customer. Transportation to the site should be organised on site and is also borne by the customer.

Pricing:

Prices in this list only apply to orders received by us up to the 31st of December. We also guarantee price stability for 4 months after ordering. The listed price valid on the day of delivery is invoiced if the goods are collected later. All prices are sales prices in Euro excl. VAT.

The pool content is rounded up to full m³ and calculated at a water level of 1.42 m.



RivieraPool Fertigschwimmbad GmbH
Klößnerstraße 2, Geeste-Dalum, Germany



Aktives Mitglied in der
Arbeitsgemeinschaft
Verstärkte Kunststoffe -
Technische Vereinigung e.V.
(AVK-TV)

Active member
of the AVK-TV
(Federation of reinforced plastics)

About our pools	Page 2
------------------------	--------

Type comparison prefabricated swimming pools	Page 4
---	--------

Prefabricated swimming pools 270/320/370

D•Line ANCONA	Page 6
D•Line MODENA	Page 8
MODENA 550: CLASSIC & SWIM & FUN	Page 10
D•Line LINEAR	Page 12
D•Line Linear RS with integrated roller shutter shaft	Page 14
WetLounge® - D•Line Ancona with Linear RS step-end and integrated roller shutter cover	Page 16
ROM	Page 18

Prefabricated swimming pools with overflow channel

D•Line ANCONA Ü	Page 20
D•Line LINEAR Ü	Page 22

Optional Extras / Accessories

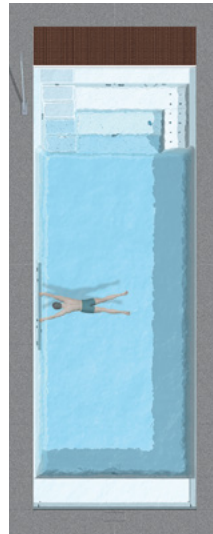
Infinity-edge	Page 24
Spring	Page 24
Stream course 38 x 7,5 cm / 220 x 30 x 14 cm	Page 24
WetLounge / shallow water areas	Page 24
Decor tiles made of Ezarri glass mosaic	Page 24
Handrails	Page 25
Balance tank	Page 25
Roller shutter niche for skimmer pools	Page 25

Type comparison prefabricated one-piece pools

370 one-piece pool



D•LINE ANCONA 800



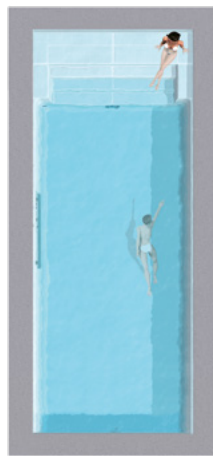
D•LINE MODENA 975



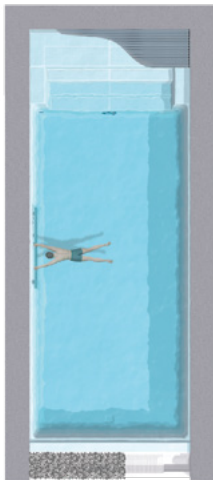
D•LINE LINEAR 945



ROM 945



D•LINE LINEAR RS 975



D•LINE LINEAR RS
with Infinity-edge



D•LINE LINEAR RS
with WetLounge

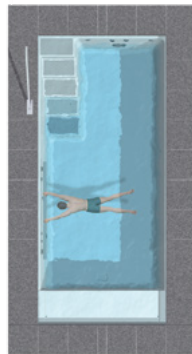


WETLOUNGE with ANCONA
and LINEAR RS step-end and
integrated roller shutter cover

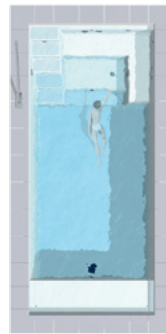
270 one-piece pool

Classic

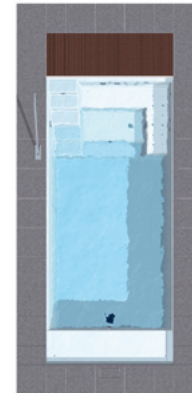
Swim & Fun



ANCONA 550

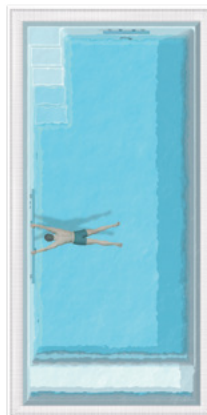


MODENA 550



MODENA 550 S & F

370 one-piece pool with overflow channel



D•LINE ANCONA 800 Ü



D•LINE LINEAR 945 Ü

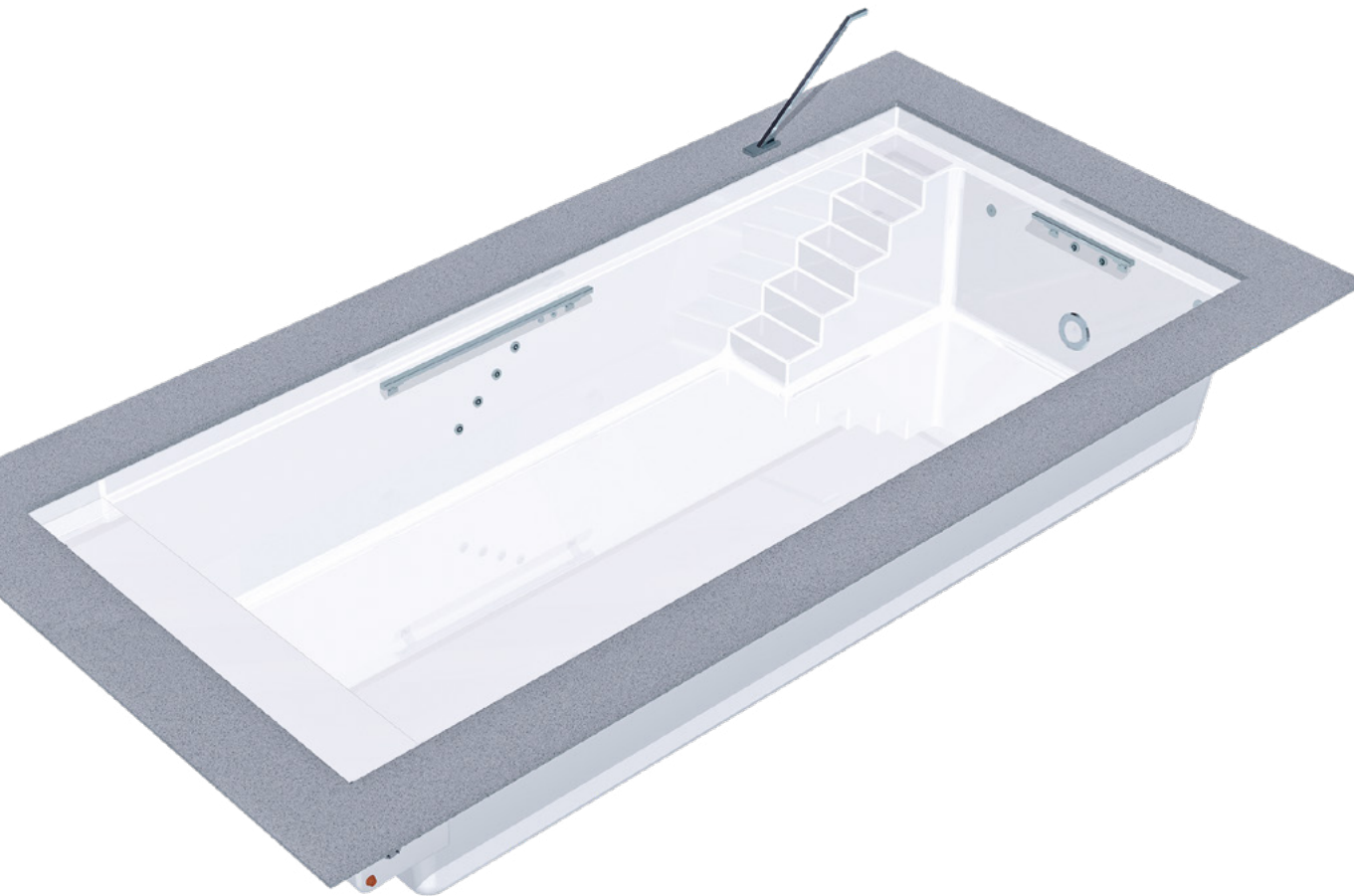
For original drawings, please contact our technical department.

All basins (except 270) are also available in excess and short lengths as split versions.

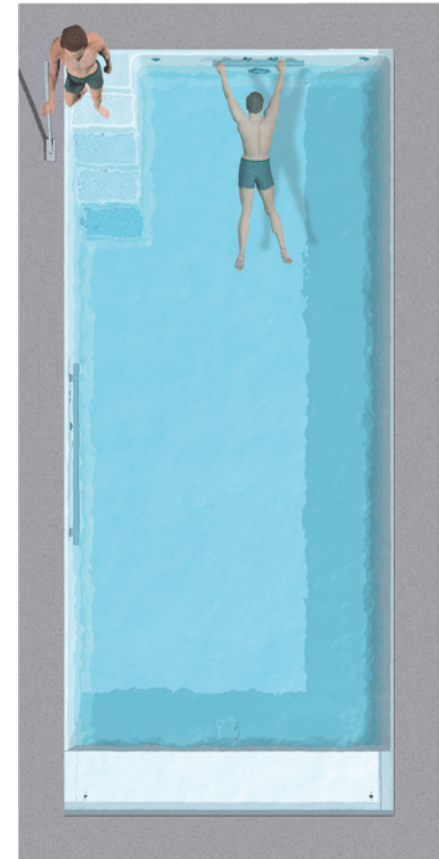
All pools shown are with equipment package and options.

ANCONA – RivieraPool's simple entry step. A timeless design which enhances your swimming pleasure to the maximum. Allowing the whole length of the pool to be used.

Pool step with 5 Steps on the right side with anti-slip profiled surface. Pool with 6 degree wall incline and roll cover ledge with integrated steel beam. Pool with 30 mm insulation in the floor and 20 mm insulation in the walls.



D•Line ANCONA

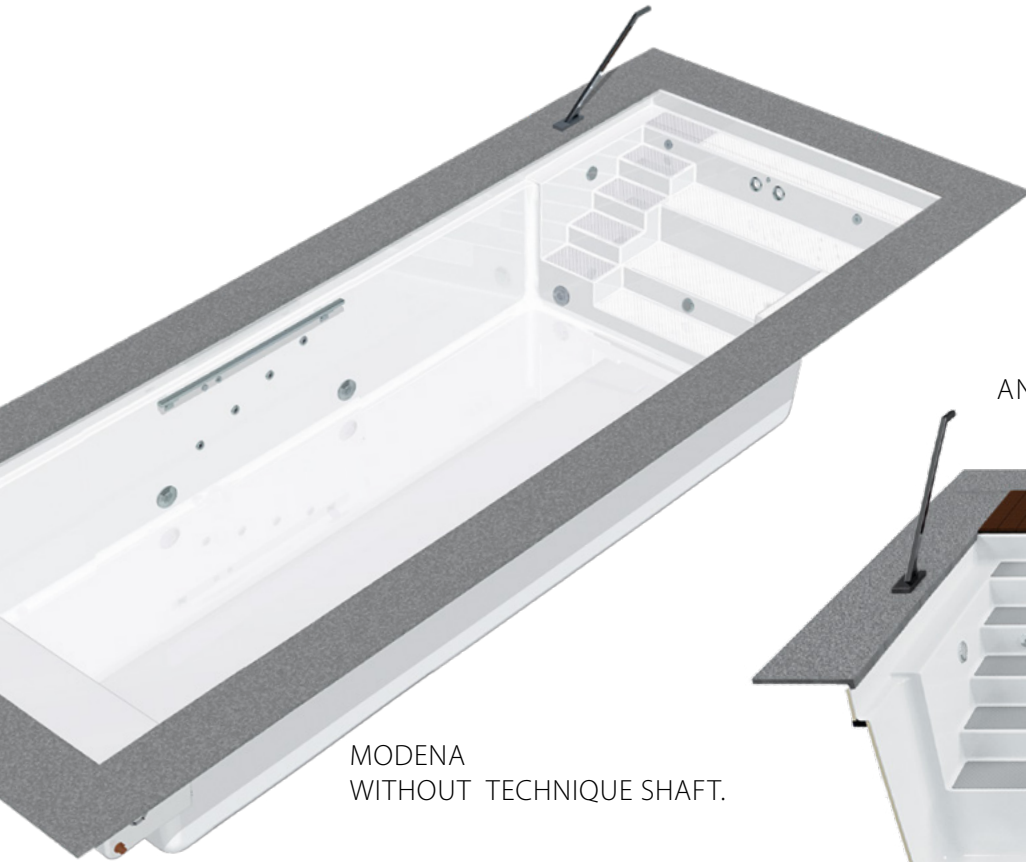


D-Line ANCONA

	550/270 5,5 x 2,7 x 1,5 m	650/320 6,5 x 3,2 x 1,5 m	800/320 8 x 3,2 x 1,5 m	1000/320 * 10 x 3,2 x 1,5 m	800/370 8 x 3,7 x 1,5 m	1000/370 9,94 x 3,7 x 1,5 m
Colours: • plain white	10.403,36 A Anc 550 010 03	12.840,34 A Anc 650 050 03	14.579,83 A Anc 800 050 03	18.983,19 A Anc 1000 050 03	19.609,24 A Anc 800 010 03	22.231,09 A Anc 1000 010 03
• papyrus (08) • plain silver-grey (24)	10.714,29 A Anc 550 010 ..	13.281,51 A Anc 650 050 ..	14.995,80 A Anc 800 050 ..	19.550,42 A Anc 1000 050 ..	20.201,68 A Anc 800 010 ..	22.899,16 A Anc 1000 010 ..
• sea blue (02) • sand (05) • white, with steps in grey or blue(01)	12.277,31 A Anc 550 010 22	15.273,11 A Anc 650 050 22	17.252,10 A Anc 800 050 22	22.773,11 A Anc 1000 050 22	23.222,69 A Anc 800 010 22	26.331,93 A Anc 1000 010 22
• granicite stone grey						
EQUIPMENT PACKAGE	Water content m ³ 18	26	32	41	37	47
1 Skimmer with water level controller (8 cm), 2 (4) inlet jets, 1 wall low level suction, 1 bottom outlet sump with cover, 1 underwater light, LED white, with transformer, polished elements	2.310,92 3 540 505	2.310,92 3 540 505	2.310,92 3 540 505	2.310,92 3 540 505	2.310,92 3 540 505	2.579,83 3 540 515
Additional underwater light with screwed-on red brass niche, 100 VA transformer	844,54 A 3 531 355	844,54 A 3 531 355	844,54 A 3 531 355	844,54 A 3 531 355	844,54 A 3 531 355	844,54 A 3 531 355
ACCESSORIES						
New! Decor tiles made of glass mosaic , series „Zen“ or „Iris“, installed and grouted at the factory. A 3 916 360	1.364,32 16,4 m	1.613,89 19,4 m	1.863,46 22,4 m	2.196,22 26,4 m	1.946,65 23,4 m	2.279,41 27,4 m
Coping stones granite , grey, 60 x 60 x 6.3 cm, with overhanging nose mottled surface, cut out for the fiberglass skimmer lid	2.936,97 A 3 025 050	3.088,24 A 3 025 000	3.542,02 A 3 025 025	3.844,54 A 3 025 148	3.693,28 A 3 025 130	3.995,80 A 3 025 142
Coping stone made of granite, grey , 50 x 35 x 4 cm, stone rounded to the pool side	1.378,15 A 3 020 226	1.596,64 A 3 020 366	1.798,32 A 3 020 356	2.012,61 A 3 020 346	1.861,34 A 3 020 506	2.079,83 A 3 020 526
Stainless steel grabrail, made of square tubing , polished, with fixing material, adhesive anchors and polished screen, per piece	978,99 A 2 302 030	978,99 A 2 302 030	978,99 A 2 302 030	978,99 A 2 302 030	978,99 A 2 302 030	978,99 A 2 302 030
2 underwater lights , LED white, with transformer, polished	1.218,49 A 3 202 080	1.218,49 A 3 202 080	1.218,49 A 3 202 080	1.218,49 A 3 202 080	1.218,49 A 3 202 080	1.218,49 A 3 202 080
Twinjet 1000 counter current unit , double jet system with 2 air regulator, piezo switch, pump 2.6 kW-400 V, nozzles with 2" connection can be installed in the backfilling concrete, piping to be done at the site	5.470,59 B 3 590 067	5.470,59 B 3 590 067	5.470,59 B 3 590 067	5.470,59 B 3 590 067	5.470,59 B 3 590 067	5.470,59 B 3 590 067
Healthstream massage system 4-22 , 4 Superjet massage jets, pump 2.2 kW, 1 air control and piezo switch	4.508,40 B 3 594 550	4.508,40 B 3 594 550	4.508,40 B 3 594 550	4.508,40 B 3 594 550	4.508,40 B 3 594 550	4.508,40 B 3 594 550
Safety suction fittings for pools <u>without roller shutter</u> shaft according to DIN EN 16 713 to be installed in the pool area. 2 x 2 ½", suction grille ø350 mm, Qmax = 52,7 m ³ /h, additional price	752,10 B 3 590 250	752,10 B 3 590 250	752,10 B 3 590 250	752,10 B 3 590 250	752,10 B 3 590 250	752,10 B 3 590 250
UNDERGROUND ROLLER SHUTTER COVER						
Roller shutter shaft Integra 2-13 for an extra high water level, extends the pool by 48 cm, with hinged seat bench and 2 inlet nozzles, Additional water content: 270: 1,2 m ³ / 320: 1,6 m ³ / 370: 1,9 m ³	3.508,40 A 2 200 640	3.735,29 A 2 200 620	3.735,29 A 2 200 620	3.735,29 A 2 200 620	4.231,09 A 2 200 610	4.231,09 A 2 200 610
Electrical roll-up fixture RSK, 24 V DC , drive shaft made from composite material with internal gear motor with 4 m cable and stainless steel wall fixings, installed in the factory; incl. control box and key switch	5.357,14 A 22 003 340	5.579,83 A 22 003 320	5.579,83 A 22 003 320	5.579,83 A 22 003 320	5.718,49 A 22 003 310	5.718,49 A 22 003 310
Roller shutter cover , 6 cm slat width						
Cover: Polycarbonate solar version	3.092,44 A 01-04 20 211	3.760,50 A 01-04 02 201	4.760,50 A 01-04 02 204	6.105,04 A 01-04 02 206	5.777,31 A 01-04 03 204	7.071,43 A 01-04 03 206
Polycarbonate solar , version silver vaporized	3.554,62 A 01-05 20 211	4.327,73 A 01-05 02 201	5.470,59 A 01-05 02 204	7.016,81 A 01-05 02 206	6.651,26 A 01-05 03 204	8.121,85 A 01-05 03 206
PVC solar version	2.298,32 A 01-02 20 211	2.815,13 A 01-02 02 201	3.558,82 A 01-02 02 204	4.592,44 A 01-02 02 206	4.331,93 A 01-02 03 204	5.298,32 A 01-02 03 206
PVC white version	1.630,25 A 01-01 20 211	1.924,37 A 01-01 02 201	2.327,73 A 01-01 02 204	2.886,55 A 01-01 02 206	2.760,50 A 01-01 03 204	3.352,94 A 01-01 03 206
PVC grey version	1.630,25 A 01-03 20 211	1.924,37 A 01-03 02 201	2.327,73 A 01-03 02 204	2.886,55 A 01-03 02 206	2.760,50 A 01-03 03 204	3.352,94 A 01-03 03 206
FREIGHT CHARGES on request						

MODENA – Offering a contemporary design of massage seating bench and relaxation area for all the whole family to enjoy. Integrating the elegant entry step into one side.

One-piece pool made out of Epoxy-acrylate, sandwich construction with 20 mm insulation in walls and 30 mm in the floor. Pool step with 6 treads on the right side with anti-slip profiled surface.

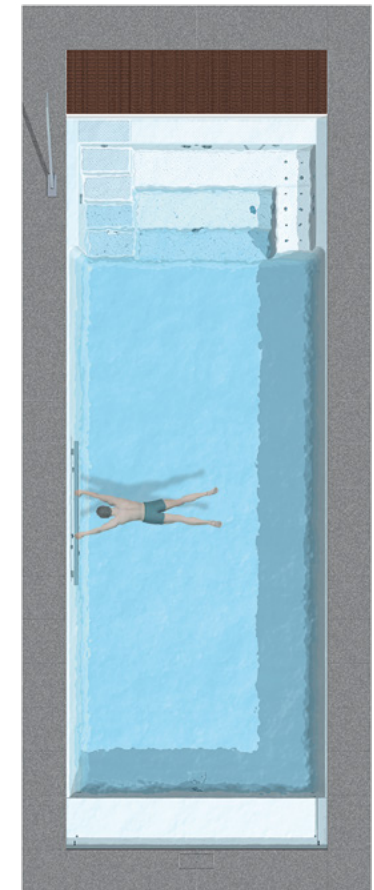


MODENA
WITHOUT TECHNIQUE SHAFT.



MODENA WITH **FUNPAK 4.2**
AND TECHNIQUE SHAFT (OPTIONAL).

D•LINE MODENA



D•LINE MODENA

Colours: • plain white

• papyrus (08) • plain silver-grey (24)

• sea blue (02) • sand (05) • white, with steps in grey or sea blue (01)

• granicite stone grey

EQUIPMENT PACKAGE

1 Skimmer with water level controller (8 cm), 2 (4) inlet jets, 1 wall low level suction, 1 bottom outlet sump with cover, 1 underwater light (ø100), LED white, with transformer, polished elements

Additional underwater light (ø100) with screwed-on niche, 50 VA transformer

FUN PAK 4.2

Technique shaft, laminated to the pool shell with fine wood cover

Flow and massage system with double jet counter current unit, 2 maritim massage jets, 6 Microjets, 1 floor geyser, installed in technique shaft

Ditto, but then for concreting with red brass inlets and PVC pipes

Air massage system, incl. piezo switch, polished, 0,85 kW blower and switchbox

ACCESSORIES

New!

Decor tiles made of glass mosaic, series „Zen“ or „Iris“, installed and grouted at the factory. A 3 916 360

Coping Stones granite, grey, 60 x 60 x 6.3 cm, with overhanging nose mottled surface, cut out for the fiberglass skimmer lid

Coping stone made of granite, grey, 50 x 35 x 4 cm, stone rounded to the pool side

Stainless steel grabrail, made of square tubing, polished, with fixing material, adhesive anchors and polished screen, per piece

2 underwater lights, LED white, with transformer, polished

Twinjet 1000 counter current unit, double jet system with 2 air regulator, Piezo switch, pump 2.6 kW-400 V, nozzles with 2" connection can be installed in the backfilling concrete, piping to be done at the site

Healthstream massage system 4-22, 4 Superjet massage jets, pump 2.2 kW, 1 air control and piezo switch

Safety suction fittings for pools without roller shutter shaft according to DIN EN 16 713 to be installed in the pool area. 2 x 2 ½", suction grille ø350 mm, Qmax = 52,7 m³/h, additional price

UNDERGROUND ROLLER SHUTTER COVER

Roller shutter shaft Integra 2-13 for an extra high water level, extends the pool by 48 cm, with hinged seat bench and 2 inlet nozzles, Additional water content: 320: 1,6 m³ / 370: 1,9 m³

Electrical roll-up fixture RSK, 24 V DC, drive shaft made from composite material with internal gear motor with 4 m cable and stainless steel wall fixings, installed in the factory; incl. control box and key switch

Roller shutter cover, 6 cm slat width

Cover: **Polycarbonate solar** version

Polycarbonate solar, version silver vaporized

PVC solar version

PVC white version

PVC grey version

FREIGHT CHARGES on request

	725/320 7,25 x 3,2 x 1,5	825/320 8,25 x 3,2 x 1,5	775/370 7,75 x 3,7 x 1,5	875/370 8,75 x 3,7 x 1,5	975/370 9,75 x 3,7 x 1,5	1075/370* 10,75 x 3,7 x 1,5	1175/370* 11,75 x 3,7 x 1,5
	13.991,60 A Mod 725 040 03	15.428,57 A Mod 825 040 03	19.848,74 A Mod 775 040 03	21.155,46 A Mod 875 040 03	22.453,78 A Mod 975 040 03	23.760,50 A Mod 1075 040 03	25.067,23 A Mod 1175 040 03
	14.500,00 A Mod 725 040 ..	15.932,77 A Mod 825 040 ..	20.361,34 A Mod 775 040 ..	21.655,46 A Mod 875 040 ..	22.957,98 A Mod 975 040 ..	24.268,91 A Mod 1075 040 ..	25.575,63 A Mod 1175 040 ..
	16.508,40 A Mod 725 040 22	18.151,26 A Mod 825 040 22	22.907,56 A Mod 775 040 22	24.214,29 A Mod 875 040 22	25.512,61 A Mod 975 040 22	26.815,13 A Mod 1075 040 22	28.134,45 A Mod 1175 040 22
EQUIPMENT PACKAGE	Water content m³ 26	30	32	37	42	47	52
1 Skimmer with water level controller (8 cm), 2 (4) inlet jets, 1 wall low level suction, 1 bottom outlet sump with cover, 1 underwater light (ø100), LED white, with transformer, polished elements	2.142,86 3 540 600	2.142,86 3 540 600	2.142,86 3 540 600	2.142,86 3 540 600	2.142,86 3 540 600	2.411,76 3 540 610	2.579,83** 3 540 620
Additional underwater light (ø100) with screwed-on niche, 50 VA transformer	676,47 A 3 531 365	676,47 A 3 531 365	676,47 A 3 531 365	676,47 A 3 531 365	676,47 A 3 531 365	676,47 A 3 531 365	676,47 A 3 531 365
FUN PAK 4.2							
Technique shaft , laminated to the pool shell with fine wood cover	3.991,60 A 2 322 060	3.991,60 A 2 322 060	4.466,39 A 2 322 062	4.466,39 A 2 322 062	4.466,39 A 2 322 062	4.466,39 A 2 322 062	4.466,39 A 2 322 062
Flow and massage system with double jet counter current unit, 2 maritim massage jets, 6 Microjets, 1 floor geyser, installed in technique shaft	7.096,64 A 3 561 280	7.096,64 A 3 561 280	7.096,64 A 3 561 280	7.096,64 A 3 561 280	7.096,64 A 3 561 280	7.096,64 A 3 561 280	7.096,64 A 3 561 280
Ditto, but then for concreting with red brass inlets and PVC pipes	8.634,45 A 3 561 290	8.634,45 A 3 561 290	8.634,45 A 3 561 290	8.634,45 A 3 561 290	8.634,45 A 3 561 290	8.634,45 A 3 561 290	8.634,45 A 3 561 290
Air massage system , incl. piezo switch, polished, 0,85 kW blower and switchbox	3.508,40 A 3 593 110	3.508,40 A 3 593 110	3.508,40 A 3 593 110	3.508,40 A 3 593 110	3.508,40 A 3 593 110	3.508,40 A 3 593 110	3.508,40 A 3 593 110
ACCESSORIES							
Decor tiles made of glass mosaic , series „Zen“ or „Iris“, installed and grouted at the factory. A 3 916 360	1.738,67 20,9 m	1.905,05 22,9 m	1.905,05 22,9 m	2.071,43 24,9 m	2.237,81 26,9 m	2.487,38 29,9 m	2.570,57 30,9 m
Coping Stones granite , grey, 60 x 60 x 6.3 cm, with overhanging nose mottled surface, cut out for the fiberglass skimmer lid	3.542,02 A 3 025 120	3.693,28 A 3 025 130	3.542,02 A 3 025 120	3.693,28 A 3 025 130	3.995,80 A 3 025 142	4.298,32 A 3 025 146	4.449,58 A 3 025 162
Coping stone made of granite, grey , 50 x 35 x 4 cm, stone rounded to the pool side	1.655,46 A 3 020 376	1.798,32 A 3 020 356	1.861,34 A 3 020 506	1.974,79 A 3 020 516	2.079,83 A 3 020 526	2.172,27 A 3 020 536	2.281,51 A 3 020 546
Stainless steel grabrail, made of square tubing , polished, with fixing material, adhesive anchors and polished screen, per piece	978,99 A 2 302 030	978,99 A 2 302 030	978,99 A 2 302 030	978,99 A 2 302 030	978,99 A 2 302 030	978,99 A 2 302 030	978,99 A 2 302 030
2 underwater lights , LED white, with transformer, polished	1.218,49 A 3 202 080	1.218,49 A 3 202 080	1.218,49 A 3 202 080	1.218,49 A 3 202 080	1.218,49 A 3 202 080	1.218,49 A 3 202 080	1.218,49 A 3 202 080
Twinjet 1000 counter current unit , double jet system with 2 air regulator, Piezo switch, pump 2.6 kW-400 V, nozzles with 2" connection can be installed in the backfilling concrete, piping to be done at the site	5.470,59 B 3 590 067	5.470,59 B 3 590 067	5.470,59 B 3 590 067	5.470,59 B 3 590 067	5.470,59 B 3 590 067	5.470,59 B 3 590 067	5.470,59 B 3 590 067
Healthstream massage system 4-22 , 4 Superjet massage jets, pump 2.2 kW, 1 air control and piezo switch	4.508,40 B 3 594 550	4.508,40 B 3 594 550	4.508,40 B 3 594 550	4.508,40 B 3 594 550	4.508,40 B 3 594 550	4.508,40 B 3 594 550	4.508,40 B 3 594 550
Safety suction fittings for pools <u>without roller shutter</u> shaft according to DIN EN 16 713 to be installed in the pool area. 2 x 2 ½", suction grille ø350 mm, Qmax = 52,7 m³/h, additional price	752,10 B 3 590 250	752,10 B 3 590 250	752,10 B 3 590 250	752,10 B 3 590 250	752,10 B 3 590 250	752,10 B 3 590 250	752,10 B 3 590 250
UNDERGROUND ROLLER SHUTTER COVER							
Roller shutter shaft Integra 2-13 for an extra high water level, extends the pool by 48 cm, with hinged seat bench and 2 inlet nozzles, Additional water content: 320: 1,6 m³ / 370: 1,9 m³	3.735,29 A 2 200 620	3.735,29 A 2 200 620	4.231,09 A 2 200 610	4.231,09 A 2 200 610	4.231,09 A 2 200 610	4.231,09 A 2 200 612	4.231,09 A 2 200 612
Electrical roll-up fixture RSK, 24 V DC , drive shaft made from composite material with internal gear motor with 4 m cable and stainless steel wall fixings, installed in the factory; incl. control box and key switch	5.579,83 A 22 003 320	5.579,83 A 22 003 320	5.718,49 A 22 003 310	5.718,49 A 22 003 310	5.718,49 A 22 003 310	5.718,49 A 22 003 310	5.718,49 A 22 003 310
Roller shutter cover , 6 cm slat width							
Cover: Polycarbonate solar version	4.361,34 A 01-04 02 252	4.928,57 A 01-04 02 253	5.579,83 A 01-04 03 252	6.222,69 A 01-04 03 253	6.861,34 A 01-04 03 254	7.500,00 A 01-04 03 255	8.155,46 A 01-04 03 256
Polycarbonate solar , version silver vaporized	5.012,61 A 01-05 02 252	5.663,87 A 01-05 02 253	6.411,76 A 01-05 03 252	7.151,26 A 01-05 03 253	7.890,76 A 01-05 03 254	8.617,65 A 01-05 03 255	9.365,55 A 01-05 03 256
PVC solar version	3.281,51 A 01-02 02 252	3.663,87 A 01-02 02 253	4.180,67 A 01-02 03 252	4.668,07 A 01-02 03 253	5.151,26 A 01-02 03 254	5.634,45 A 01-02 03 255	6.117,65 A 01-02 03 256
PVC white version	2.134,45 A 01-01 02 252	2.407,56 A 01-01 02 253	2.743,70 A 01-01 03 252	3.042,02 A 01-01 03 253	3.357,14 A 01-01 03 254	3.651,26 A 01-01 03 255	3.949,58 A 01-01 03 256
PVC grey version	2.134,45 A 01-03 02 252	2.407,56 A 01-03 02 253	2.743,70 A 01-03 03 252	3.042,02 A 01-03 03 253	3.357,14 A 01-03 03 254	3.651,26 A 01-03 03 255	3.949,58 A 01-03 03 256

* Freight charges with roller shutter cover and technique shaft on request

** Skimmer made of stainless steel, loose, if basin is equipped with Integra 2-13

MODENA 550 *Classic*

- One-piece pool made out of Epoxy-acrylate
- Pool with 3 cm insulation in the floor and 20 mm insulation in the walls
- Pool with 6 degree wall incline and roll cover ledge with integrated steel beam
- Pool step with 6 treads on the right side with anti-slip profiled surface



MODENA 550 *Swim & Fun*

Swim-Spa made out of "Epoxy Acrylate"

- 6 pool steps with anti-slip profiled surface, comfortable seat and lounge with massage equipment. Roller shutter safety ledge. Steel frame integrated below the ledge of the roller shutter
- Pool with 3 cm insulation in the floor and 2 cm insulation in the walls
- Technique shaft laminated to the pool shell with fine wood cover (Kebony®)

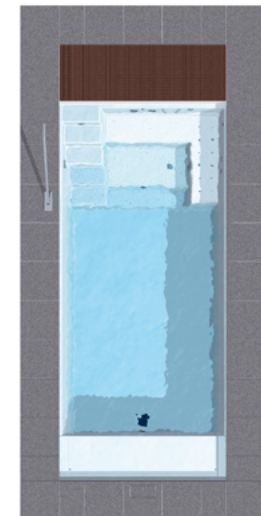
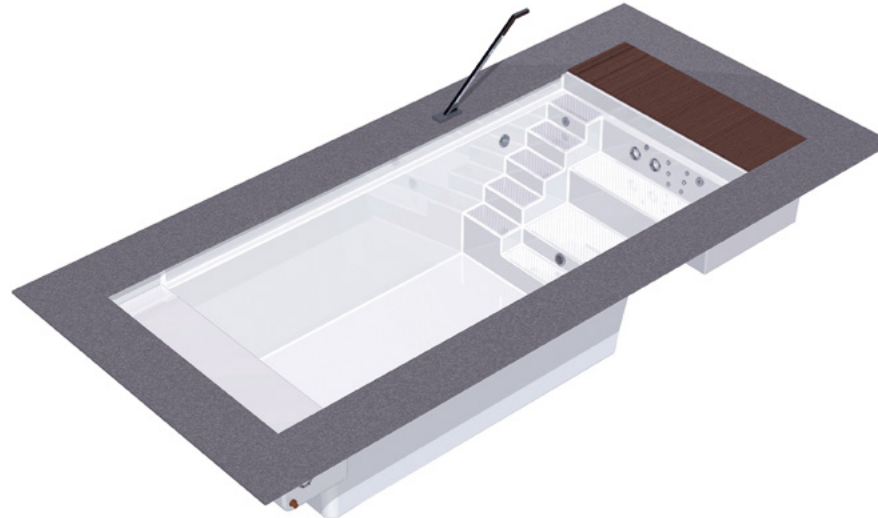
Prefabricated swimming pool for inground-installation to be backfilled with lean concrete. All accessories pre-plumbed and pre-installed.

Filtration/heating:

- Pool filter with 6-way multiport valve and pump 0,37 kW with prefilter
- Electric heater 3 + 2 kW
- Skimmer with water level regulator
- 1 low level wall suction fitting
- 1 bottom outlet sump with cover
- 2 inlet jets
- 1 underwater light, LED white, 12 V, with transformer and plastic connection box
- Spa control with Spa Touch

Swim & Fun Pak consisting of:

- Double jet countercurrent system with air controls
- 6 microjets for back and legs
- 1 floor geyser for foot and calf
- 2 maritim massage jets



Modena 550

- Colours: • plain white
 • papyrus (08) • plain silver-grey (24)
 • sea blue (02) • sand (05) • white, with steps in grey or sea blue (01)
 • granicite stone grey

EQUIPMENT PACKAGE

1 Skimmer with water level controller (8 cm), 2 inlet jets, 1 wall low level suction, 1 bottom outlet sump with cover, 1 underwater light, LED white, ø100 mm, with transformer, polished elements

ACCESSORIES

New!

Decor tiles made of Ezarri glass mosaic, series „Zen“ or „Iris“, installed and grouted at the factory.

Coping Stones granite, grey, 60 x 60 x 6.3 cm, with overhanging nose mottled surface, cut out for the fiberglass skimmer lid

Coping stone made of granite, grey, 50 x 35 x 4 cm, stone rounded to the pool side

Stainless steel grabrail, made of square tubing, polished, with fixing material, adhesive anchors and polished screen, per piece

FUN PAK 4.2

Technique shaft, laminated to the pool shell with fine wood (Kebony®)

Flow and massage system with double jet counter current unit, 2 maritim massage jets, 6 Microjets, 1 floor geyser, installed in technique shaft

Ditto, but then for concreting with red brass inlets and PVC pipes

Air massage system, incl. piezo switch, polished, 0,85 kW blower and switchbox

2 underwater lights, LED white, with transformer, polished

Pool filter 40 SC, with top valve, pump 0,37 kW, timer, installed in technique shaft

Warm water heat exchanger 40 kW with control unit installed in technique shaft

Twinjet 1000 counter current unit, double jet system with 2 air regulator, piezo switch, pump 2.6 kW- 400 V, nozzles with 2" connection can be installed in the backfilling concrete, piping to be done at the site

Safety suction fittings for pools without roller shutter shaft according to DIN EN 16 713 to be installed in the pool area. 2 x 2 1/2", suction grille ø 350 mm, Qmax = 52,7 m³/h, additional price

UNDERGROUND ROLLER SHUTTER COVER

Roller shutter shaft Integra 2-13 for an extra high water level, extends the pool by 48 cm, with hinged seat bench and 2 inlet nozzles, Additional water content: 270 : 1,2 m³

Electrical roll-up fixture RSK, 24 V DC, drive shaft made from composite material with internal gear motor incl. 4 m cable or 20 m for the swim & fun respectively, stainless steel wall fixings, installed in the factory; incl. control box and key switch

Roller shutter cover, 6 cm slat width

Cover: **Polycarbonate solar** version

Polycarbonate solar, version silver vaporized

PVC solar version

PVC white version

PVC grey version

FREIGHT CHARGES on request

Classic

5,5 x 2,7 x 1,5

10.752,10

A Mod 550 010 03

11.294,12

A Mod 550 010 ..

13.029,41

A Mod 550 010 22

Water Content m³

16

2.142,86

3 540 650

Swim & Fun

5,5 x 2,7 x 1,5

32.088,24

A Mod 550 020 03

32.638,66

A Mod 550 020 ..

34.365,55

A Mod 550 020 22

16

incl.

1.364,32

16,4 m

2.936,97

A 3 025 050

1.378,15

A 3 020 226

978,99

A 2 302 030

1.364,32

16,4 m

2.936,97

A 3 025 050

1.378,15

A 3 020 226

978,99

A 2 302 030

3.764,71

A 2 322 063

7.096,64

A 3 561 280

8.634,45

A 3 561 290

3.508,40

A 3 593 110

1.218,49

A 3 202 080

1.840,34

A 60 58

1.457,98

A 6 112 100

5.470,59

B 3 590 067

752,10

B 3 590 250

incl.

incl.

8.634,45

A 3 561 290

3.508,40

A 3 593 110

1.218,49

A 3 202 080

incl.

1.457,98

A 6 112 100

5.470,59

B 3 590 067

752,10

B 3 590 250

3.508,40

A 2 200 640

5.357,14

A 22 003 340

3.092,44

A 01-04 20 211

3.554,62

A 01-05 20 211

2.298,32

A 01-02 20 211

1.630,25

A 01-01 20 211

1.630,25

A 01-03 20 211

3.508,40

A 2 200 640

5.571,43

A 22 003 350

3.092,44

A 01-04 20 211

3.554,62

A 01-05 20 211

2.298,32

A 01-02 20 211

1.630,25

A 01-01 20 211

1.630,25

A 01-03 20 211

LINEAR – Modern, elegant and clean lines. An entry step for friends to gather and relax, before or after exercise.

One-piece pool made out of Epoxy-acrylate, sandwich construction with 2 cm insulation in walls and 3 cm in the floor. 6 degree wall incline and rollcover ledge with integrated steel beam. 4 extra wide 37 cm steps with anti-slip profiled surface.



D•Line LINEAR



D-Line LINEAR

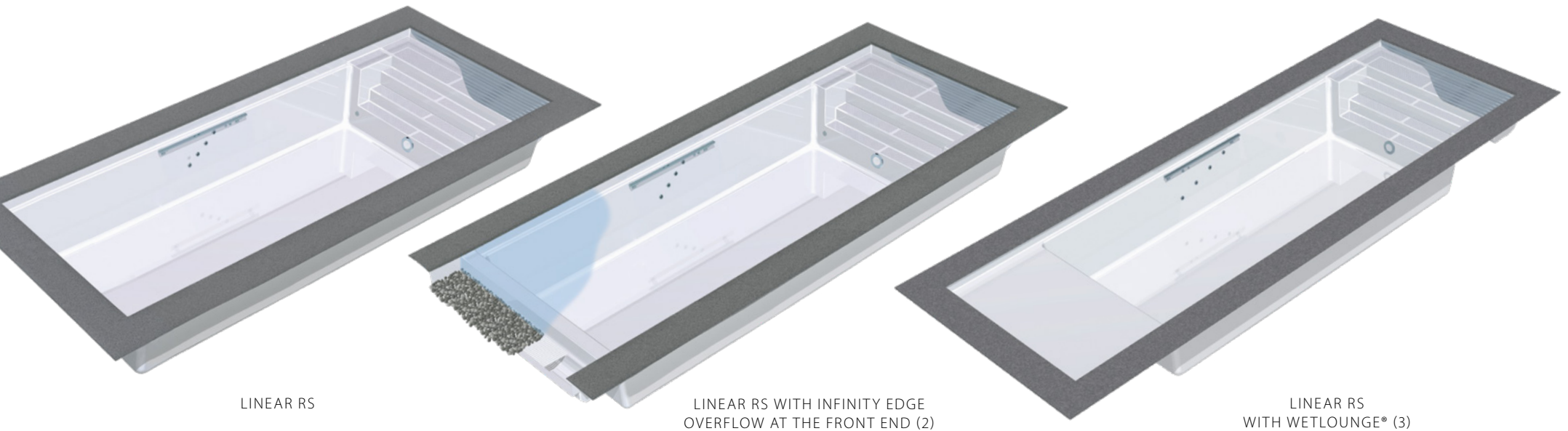
	745 7,40 x 3,7 x 1,5 m	845 8,40 x 3,7 x 1,5 m	945 9,40 x 3,7 x 1,5 m	1045 10,40 x 3,7 x 1,5 m	1145 11,40 x 3,7 x 1,5 m
Colours: • plain white	19.483,19 A Lin 745 010 03	20.785,71 A Lin 845 010 03	22.088,24 A Lin 945 010 03	23.394,96 A Lin 1045 010 03	24.701,68 A Lin 1145 010 03
• papyrus (08) • plain silver-grey (24)	19.991,60 A Lin 745 010 ..	21.285,71 A Lin 845 010 ..	22.596,64 A Lin 945 010 ..	23.899,16 A Lin 1045 010 ..	25.210,08 A Lin 1145 010 ..
• sea blue (02) • sand (05) • white, with steps in grey or sea blue (01)	22.542,02 A Lin 745 010 22	23.844,54 A Lin 845 010 22	25.147,06 A Lin 945 010 22	26.449,58 A Lin 1045 010 22	27.764,71 A Lin 1145 010 22
• granicite stone grey					
EQUIPMENT PACKAGE	Water content m ³	31	36	41	46
1 Skimmer with water level controller (8 cm), 2 (4) inlet jets, 1 wall low level suction, 1 bottom outlet sump with cover, 1 underwater light, LED white, with transformer, polished elements	2.310,92 3 540 500	2.310,92 3 540 500	2.310,92 3 540 500	2.579,83 3 540 510	2.579,83 3 540 510
Additional underwater light with screwed-on red brass niche, 100 VA transformer	844,54 A 3 531 355	844,54 A 3 531 355	844,54 A 3 531 355	844,54 A 3 531 355	844,54 A 3 531 355
ACCESSORIES					
New! Decor tiles made of glass mosaic , series „Zen“ or „Iris“, installed and grouted at the factory. A 3 916 360	1.855,14 22,3 m	2.021,52 24,3 m	2.187,90 26,3 m	2.354,28 28,3 m	2.520,66 30,3 m
Coping stones granite , grey, 60 x 60 x 6.3 cm, with overhanging nose mottled surface, cut out for the fiberglass skimmer lid	3.542,02 A 3 025 120	3.693,28 A 3 025 130	3.995,80 A 3 025 142	4.147,06 A 3 025 144	4.298,32 A 3 025 152
Coping stone made of granite, grey , 50 x 35 x 4 cm, stone rounded to the pool side	1.861,34 A 3 022 306	1.974,79 A 3 022 406	2.079,83 A 3 022 506	2.172,27 A 3 022 606	2.281,51 A 3 022 706
Stainless steel grabrail Linear , polished, with fixing material, per piece	1.084,03 A 2 302 040	1.084,03 A 2 302 040	1.084,03 A 2 302 040	1.084,03 A 2 302 040	1.084,03 A 2 302 040
2 underwater lights , LED white, with transformer, polished	1.218,49 A 3 202 080	1.218,49 A 3 202 080	1.218,49 A 3 202 080	1.218,49 A 3 202 080	1.218,49 A 3 202 080
Twinjet 1000 counter current unit , double jet system with 2 air regulator, piezo switch, pump 2.6 kW- 400 V, nozzles with 2" connection can be installed in the backfilling concrete, piping to be done at the site	5.470,59 B 3 590 067	5.470,59 B 3 590 067	5.470,59 B 3 590 067	5.470,59 B 3 590 067	5.470,59 B 3 590 067
Healthstream massage system 4-22 , 4 Superjet massage jets, pump 2.2 kW, 1 air control and Piezo switch	4.508,40 B 3 594 550	4.508,40 B 3 594 550	4.508,40 B 3 594 550	4.508,40 B 3 594 550	4.508,40 B 3 594 550
Safety suction fittings for pools <u>without roller shutter</u> shaft according to DIN EN 16713 to be installed in the pool area. 2 x 2 1/2", suction grille ø 350 mm, Qmax = 52,7 m ³ /h, additional price	752,10 B 3 590 250	752,10 B 3 590 250	752,10 B 3 590 250	752,10 B 3 590 250	752,10 B 3 590 250
UNDERGROUND ROLLER SHUTTER COVER					
Roller shutter shaft Integra 2-13 for an extra high water level, extends the pool by 48 cm, with hinged seat bench and 2 inlet nozzles, Additional water content: 370: 1,9 m ³	4.231,09 A 2 200 610	4.231,09 A 2 200 610	4.231,09 A 2 200 610	4.231,09 A 2 200 612	4.231,09 A 2 200 612
Electrical roll-up fixture RSK, 24 V DC , drive shaft made from composite material with internal gear motor with 4 m cable and stainless steel wall fixings, installed in the factory; incl. control box and key switch	5.718,49 A 22 003 310	5.718,49 A 22 003 310	5.718,49 A 22 003 310	5.718,49 A 22 003 310	5.718,49 A 22 003 310
Roller shutter cover , 6 cm slat width					
Cover: Polycarbonate solar version	5.579,83 A 01-04 03 232	6.222,69 A 01-04 03 233	6.861,34 A 01-04 03 234	7.500,00 A 01-04 03 235	8.155,46 A 01-04 03 236
Polycarbonate solar , version silver vaporized	6.411,76 A 01-05 03 232	7.151,26 A 01-05 03 233	7.890,76 A 01-05 03 234	8.617,65 A 01-05 03 235	9.365,55 A 01-05 03 236
PVC solar version	4.180,67 A 01-02 03 232	4.668,07 A 01-02 03 233	5.151,26 A 01-02 03 234	5.634,45 A 01-02 03 235	6.117,65 A 01-02 03 236
PVC white version	2.743,70 A 01-01 03 232	3.042,02 A 01-01 03 233	3.357,14 A 01-01 03 234	3.651,26 A 01-01 03 235	3.949,58 A 01-01 03 236
PVC grey version	2.743,70 A 01-03 03 232	3.042,02 A 01-03 03 233	3.357,14 A 01-03 03 234	3.651,26 A 01-03 03 235	3.949,58 A 01-03 03 236
FREIGHT CHARGES on request					

Linear RS – the highlight of your garden

The linear step end with integrated roller shutter shaft.

A one-piece swimming pool like the Linear but with a more sophisticated feature: The Linear RS stairs have an integrated roller-shutter shaft. The cover is concealed invisibly below the steps, slides out at the touch of a button and covers the pool. For inspections, the step section folds up to open up the entire shaft. This arrangement also allows the use of an infinity edge that can be covered with decorative flow gravel; the water surface is smooth and calm (Fig. 2). The WetLounge is a great combination with the Linear RS stairs, providing an additional calm-water area for you to relax and your children to play (Fig. 3).

D•Line LINEAR RS



D • Line LINEAR RS

Colours: • plain white

• papyrus (08) • plain silver-grey (24)

• sea blue (02) • sand (05) • white, with steps in grey or sea blue (01)

• granicite stone grey

EQUIPMENT PACKAGE

1 Skimmer with water level controller (8 cm), 2 (4) inlet jets, 1 wall low level suction, 1 bottom outlet sump with cover, 1 underwater light, LED white, with transformer, polished elements

Additional underwater light with screwed-on red brass niche, 100 VA transformer

ACCESSORIES

New!

Decor tiles made of glass mosaic, series „Zen“ or „Iris“, installed and grouted at the factory. A 3 916 360

Coping stones granite, grey, 60 x 60 x 6.3 cm, with overhanging nose mottled surface, cut out for the fiberglass skimmer lid

Coping stone made of granite, grey, 50 x 35 x 4 cm, stone rounded to the pool side

Stainless steel grabrail Linear, polished, with fixing material, per piece

2 underwater lights, LED white, with transformer, polished

Twinjet 1000 counter current unit, double jet system with 2 air regulator, piezo switch, pump 2.6 kW- 400 V, nozzles with 2" connection can be installed in the backfilling concrete, piping to be done at the site

Healthstream massage system 4-22, 4 Superjet massage jets, pump 2.2 kW, 1 air control and Piezo switch

Safety suction fittings for pools without roller shutter shaft according to DIN EN 16713 to be installed in the pool area. 2 x 2 1/2", suction grille ø 350 mm, Qmax = 52,7 m³/h, additional price

UNDERGROUND ROLLER SHUTTER COVER

Electrical roll-up fixture RSK, 24 V DC, drive shaft made from composite material with internal gear motor with 4 m cable and stainless steel wall fixings, installed in the factory; incl. control box and key switch

Roller shutter cover, 6 cm slat width

Cover: **Polycarbonate solar** version

Polycarbonate solar, version silver vaporized

PVC solar version

PVC white version

PVC grey version

Infinity edge overflow at the front end

Overflow channel with gutter for infinity edge

Shallow water area (Caution: Include roller cover extension) 23 cm deep, 2 m laminated, ** 1,80 m long, flanged

FREIGHT CHARGES on request

775
7,75 x 3,7 x 1,5

875
8,75 x 3,7 x 1,5

975
9,75 x 3,7 x 1,5

1075
10,75 x 3,7 x 1,5

1175
11,75 x 3,7 x 1,5

26.953,78

A LRS 775 010 03

27.466,39

A LRS 775 010 ..

30.012,61

A LRS 775 010 22

28.256,30

A LRS 875 010 03

28.764,71

A LRS 875 010 ..

31.315,13

A LRS 875 010 22

29.563,03

A LRS 975 010 03

30.063,03

A LRS 975 010 ..

32.617,65

A LRS 975 010 22

30.861,34

A LRS 1075 010 03

31.373,95

A LRS 1075 010 ..

33.928,57

A LRS 1075 010 22

32.172,27

A LRS 1175 010 03

32.680,67

A LRS 1175 010 ..

35.235,29

A LRS 1175 010 22

Water content m³

32

37

42

47

52

2.310,92

3 540 500

2.310,92

3 540 500

2.310,92

3 540 500

2.579,83

3 540 510

2.579,83

3 540 510

844,54

A 3 531 355

844,54

A 3 531 355

844,54

A 3 531 355

844,54

A 3 531 355

844,54

A 3 531 355

1.905,05

22,9 m

2.071,43

24,9 m

2.237,81

26,9 m

2.487,38

29,9 m

2.570,57

30,9 m

3.542,02

A 3 025 120

3.693,28

A 3 025 130

3.995,80

A 3 025 142

4.147,06

A 3 025 144

4.298,32

A 3 025 152

1.756,30

A 3 020 496

1.861,34

A 3 020 506

1.974,79

A 3 020 516

2.079,83

A 3 020 526

2.172,27

A 3 020 536

1.084,03

A 2 302 040

1.084,03

A 2 302 040

1.084,03

A 2 302 040

1.084,03

A 2 302 040

1.084,03

A 2 302 040

1.218,49

A 3 202 080

1.218,49

A 3 202 080

1.218,49

A 3 202 080

1.218,49

A 3 202 080

1.218,49

A 3 202 080

5.470,59

B 3 590 067

5.470,59

B 3 590 067

5.470,59

B 3 590 067

5.470,59

B 3 590 067

5.470,59

B 3 590 067

4.508,40

B 3 594 550

4.508,40

B 3 594 550

4.508,40

B 3 594 550

4.508,40

B 3 594 550

4.508,40

B 3 594 550

752,10

B 3 590 250

752,10

B 3 590 250

752,10

B 3 590 250

752,10

B 3 590 250

752,10

B 3 590 250

5.718,49

A 22 003 310

5.718,49

A 22 003 310

5.718,49

A 22 003 310

5.718,49

A 22 003 310

5.718,49

A 22 003 310

5.579,83

A 01-04 04 232

6.222,69

A 01-04 04 233

6.861,34

A 01-04 04 234

7.500,00

A 01-04 04 235

8.155,46

A 01-04 04 236

6.411,76

A 01-05 04 232

7.151,26

A 01-05 04 233

7.890,76

A 01-05 04 234

8.617,65

A 01-05 04 235

9.365,55

A 01-05 04 236

4.180,67

A 01-02 04 232

4.668,07

A 01-02 04 233

5.151,26

A 01-02 04 234

5.634,45

A 01-02 04 235

6.117,65

A 01-02 04 236

2.743,70

A 01-01 04 232

3.042,02

A 01-01 04 233

3.357,14

A 01-01 04 234

3.651,26

A 01-01 04 235

3.949,58

A 01-01 04 236

2.743,70

A 01-03 04 232

3.042,02

A 01-03 04 233

3.357,14

A 01-03 04 234

3.651,26

A 01-03 04 235

3.949,58

A 01-03 04 236

2.924,37

A 2 115 050

2.924,37

A 2 115 050

2.924,37

A 2 115 050

2.924,37

A 2 115 050

2.924,37

A 2 115 050

970,59

A 2 115 055

970,59

A 2 115 055

970,59

A 2 115 055

970,59

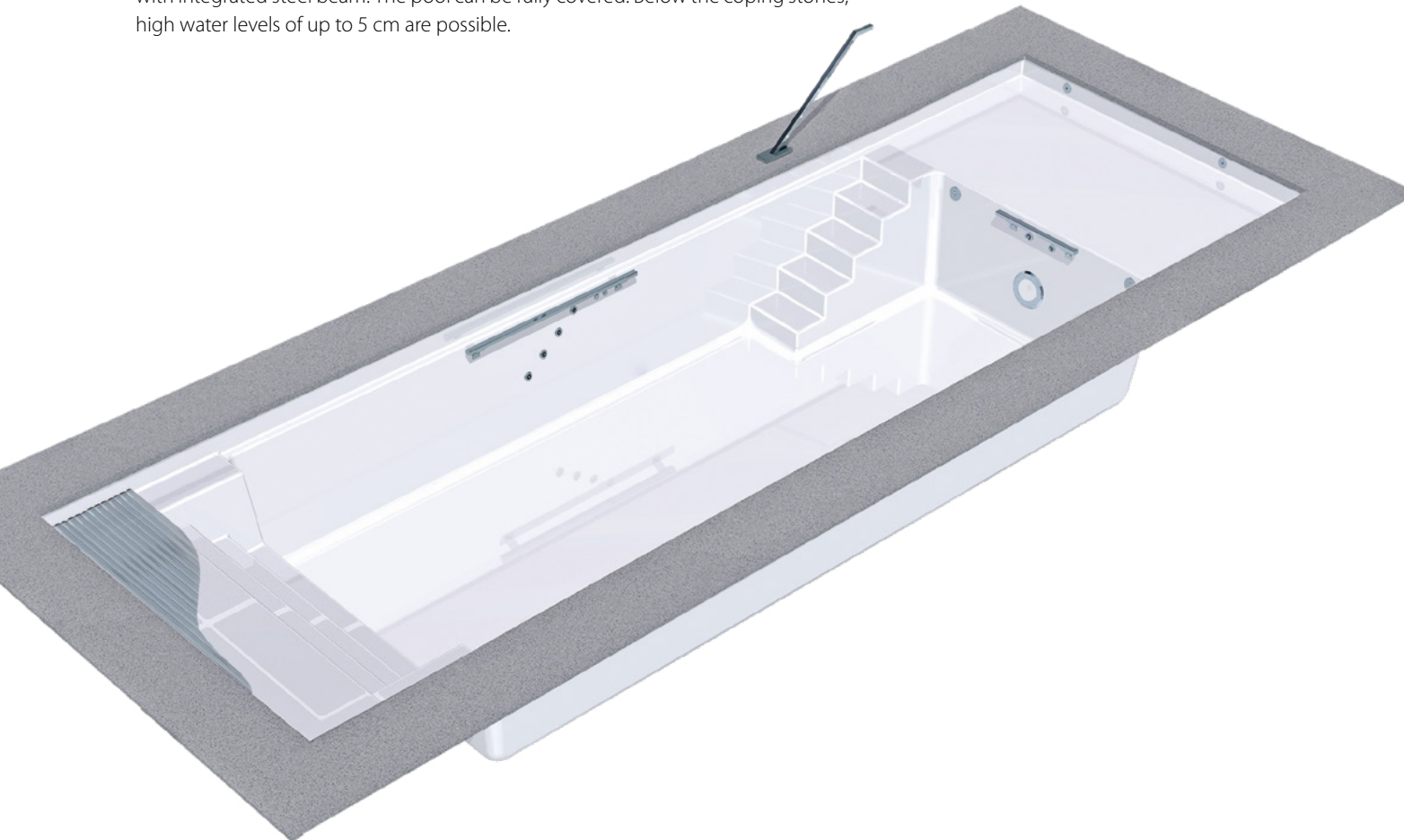
A 2 115 055

970,59

WetLounge® is the ideal combination for plenty of unique and unforgettable summers:

- Spacious swimming area measuring 8 x 3,7 metres or 10 x 3,7 metres with 1,5 metres depth
- Step system Linear RS with four large steps and integrated roller shutter pool cover
- WetLounge® –shallow water zone 2 x 3,7 meters and 0,23 meters depth
- Step system Ancona, five steps in front of the lounge

One-piece pool made out of Epoxy-acrylate, sandwich construction with 2 cm insulation in the walls and 3 cm in the floor. 6 degree wall incline and rollcover ledge with integrated steel beam. The pool can be fully covered. Below the coping stones, high water levels of up to 5 cm are possible.



WET LOUNGE



WetLounge® area shallow water zone 2 m - D-Line Ancona with Linear RS step-end and integrated roller shutter cover 1,75 m

Colours: • plain white

- papyrus (08) • plain silver-grey (24)
- sea blue (02) • sand (05) • white, with steps in grey or sea blue (01)

- granicite stone grey

WL 1175
11,75 x 3,7 x 1,5 m

WL 1375*
13,75 x 3,7 x 1,5 m

32.100,84
A AWL 1175 01003

36.537,82
A Awl 1375 01003

35.340,34
A AWL 1175 010..

38.042,02
A Awl 1375 010..

38.369,75
A AWL 1175 01022

41.474,79
A Awl 1375 01022

EQUIPMENT PACKAGE

Water content m³

43

53

1 Skimmer with water level controller (8 cm), 2 (4) inlet jets, 1 wall low level suction, 1 bottom outlet sump with cover, 1 underwater light, LED white, with transformer, polished elements

2.310,92
3 540 505

2.579,83
3 540 515

Additional underwater light with screwed-on red brass niche, 100 VA transformer

844,54
A 3 531 355

844,54
A 3 531 355

ACCESSORIES

New!

Decor tiles made of Ezarri glass mosaic, series „Zen“ or „Iris“, installed and grouted at the factory.

A 3 916 360

2.570,57
30,9 m

2.903,33
34,9 m

Coping stones granite, grey, 60 x 60 x 6.3 cm, with overhanging nose mottled surface, cut out for the fiberglass skimmer lid

4.298,32
A 3 025 152

4.752,10
A 3 025 172

Coping stone made of granite, grey, 50 x 35 x 4 cm, stone rounded to the pool side

2.172,27
A 3 020 536

2.289,92
A 3 020 556

Stainless steel grabrail, polished, with fixing material, adhesive anchors and polished screen, per piece

978,99
A 2 302 030

978,99
A 2 302 030

2 underwater lights, LED white, with transformer, polished

1.218,49
A 3 202 080

1.218,49
A 3 202 080

Twinjet 1000 counter current unit, double jet system with 2 air regulator, piezo switch, pump 2.6 kW- 400 V, nozzles with 2" connection can be installed in the backfilling concrete, piping to be done at the site

5.470,59
B 3 590 067

5.470,59
B 3 590 067

Healthstream massage system 4-22, 4 Superjet massage jets, pump 2.2 kW, 1 air control and piezo switch

4.508,40
B 3 594 550

4.508,40
B 3 594 550

Safety suction fittings for pools without roller shutter shaft according to DIN EN 16713 to be installed in the pool area. 2 x 2 ½", suction grille ø 350 mm, Qmax = 52,7 m³/h, additional price

752,10
B 3 590 250

752,10
B 3 590 250

UNDERGROUND ROLLER SHUTTER COVER

Electrical roll-up fixture RSK, 24 V DC, drive shaft made from composite material with internal gear motor with 4 m cable and stainless steel wall fixings, installed in the factory; incl. control box and key switch

5.718,49
A 22 003 310

5.718,49
A 22 003 310

Roller shutter cover, 6 cm slat width

Cover: **Polycarbonate solar** version

8.155,46
A 01-04 04 236

9.537,82
A 01-04 04 238

Polycarbonate solar, version silver vaporized

9.365,55
A 01-05 04 236

10.970,59
A 01-05 04 238

PVC solar version

6.117,65
A 01-02 04 236

7.151,26
A 01-02 04 238

PVC white version

3.949,58
A 01-01 04 236

4.512,61
A 01-01 04 238

PVC grey version

3.949,58
A 01-03 04 236

4.512,61
A 01-03 04 238

FREIGHT CHARGES on request

* For reasons of transport the WetLounge® is delivered with flange for on-site installation.

ROM – Traditional pool entry step with 5 full width steps with anti-slip profiled surface. Designed into a semi-circular "Roman" end.

One-piece polyester pool made out of Epoxy-Acrylate. 5 pool steps, with 6 degree wall incline and rollcover ledge with integrated steel beam. Pool with 3 cm insulation in the floor and 2 cm insulation in the walls.



ROM



ROM

Colours: • plain white

- papyrus (08) • plain silver-grey (24)
- sea blue (02) • sand (05) • white, with steps in grey or sea blue (01)

• granicite stone grey

	745 7,45 x 3,7 x 1,5	845 8,45 x 3,7 x 1,5	945 9,45 x 3,7 x 1,5	1045 10,45 x 3,7 x 1,5	1145 11,45 x 3,7 x 1,5
	19.445,38 A Rom 745 010 03	20.756,30 A Rom 845 010 03	22.063,03 A Rom 945 010 03	23.365,55 A Rom 1045 010 03	24.676,47 A Rom 1145 010 03
	19.962,18 A Rom 745 010 ..	21.268,91 A Rom 845 010 ..	22.588,24 A Rom 945 010 ..	23.894,96 A Rom 1045 010 ..	25.210,08 A Rom 1145 010 ..
	22.957,98 A Rom 745 010 22	24.462,18 A Rom 845 010 22	25.962,18 A Rom 945 010 22	27.470,59 A Rom 1045 010 22	28.974,79 A Rom 1145 010 22

EQUIPMENT PACKAGE

Water Content m³

1 Skimmer with water level controller (8 cm), 2 (4) inlet jets, 1 wall low level suction, 1 bottom outlet sump with cover, 1 underwater light, LED white, with transformer, polished elements

	31	36	41	46	51
	2.310,92 3 540 500	2.310,92 3 540 500	2.310,92 3 540 500	2.579,83 3 540 510	2.579,83 3 540 510

Additional underwater light with screwed-on red brass niche, 100 VA transformer

	844,54 A 3 531 355	844,54 A 3 531 355	844,54 A 3 531 355	844,54 A 3 531 355	844,54 A 3 531 355

ACCESSORIES

New!

Decor tiles made of Ezarri glass mosaic, series „Zen“ or „Iris“, installed and grouted at the factory. A 3 916 360

	1.855,14 22,3 m	2.021,52 24,3 m	2.187,90 26,3 m	2.354,28 28,3 m	2.520,66 30,3 m

Coping stone made of granite, grey, 50 x 35 x 4 cm, stone rounded to the pool side

	1.932,77 A 3 021 206	2.054,62 A 3 021 306	2.151,26 A 3 021 406	2.252,10 A 3 021 506	2.361,34 A 3 021 606

Stainless steel grabrail, per pair, polished

	1.184,87 A 2 302 010	1.184,87 A 2 302 010	1.184,87 A 2 302 010	1.184,87 A 2 302 010	1.184,87 A 2 302 010

Twinjet 1000 counter current unit, double jet system with 2 air regulator, piezo switch, pump 2.6 kW- 400 V, nozzles with 2" connection can be installed in the backfilling concrete, piping to be done at the site

	5.470,59 B 3 590 067	5.470,59 B 3 590 067	5.470,59 B 3 590 067	5.470,59 B 3 590 067	5.470,59 B 3 590 067

Healthstream massage system 4-22, 4 Superjet massage jets, pump 2.2 kW, 1 air control and piezo switch

	4.508,40 B 3 594 550	4.508,40 B 3 594 550	4.508,40 B 3 594 550	4.508,40 B 3 594 550	4.508,40 B 3 594 550

Safety suction fittings for pools without roller shutter shaft according to DIN EN 16713 to be installed in the pool area. 2 x 2 1/2", suction grille ø350 mm, Qmax = 52,7 m³/h, additional price

	752,10 B 3 590 250	752,10 B 3 590 250	752,10 B 3 590 250	752,10 B 3 590 250	752,10 B 3 590 250

Stainless steel handrail, polished, 2 m long, made of round tubing, with 2 mounting flanges and wall anchors, per piece

	584,03 A 2 303 080	584,03 A 2 303 080	584,03 A 2 303 080	584,03 A 2 303 080	584,03 A 2 303 080

2 underwater lights, LED white, with transformer, polished

	1.218,49 A 3 202 080	1.218,49 A 3 202 080	1.218,49 A 3 202 080	1.218,49 A 3 202 080	1.218,49 A 3 202 080

UNDERGROUND ROLLER SHUTTER COVER

Roller shutter shaft Integra 2-13 for an extra high water level, extends the pool by 48 cm, with hinged seat bench and 2 inlet nozzles, Additional water content: 370: 1,9 m³

	4.231,09 A 2 200 610	4.231,09 A 2 200 610	4.231,09 A 2 200 610	4.231,09 A 2 200 612	4.231,09 A 2 200 612

Electrical roll-up fixture RSK, 24 V DC, drive shaft made from composite material with internal gear motor with 4 m cable and stainless steel wall fixings, installed in the factory; incl. control box and key switch

	5.718,49 A 22 003 310	5.718,49 A 22 003 310	5.718,49 A 22 003 310	5.718,49 A 22 003 310	5.718,49 A 22 003 310

Roller shutter cover, 6 cm slat width

Cover: **Polycarbonate solar** version

	5.760,50 A 01-04 03 242	6.407,56 A 01-04 03 243	7.042,02 A 01-04 03 244	7.680,67 A 01-04 03 245	8.336,13 A 01-04 03 246

Polycarbonate solar, version silver vaporized

	6.495,80 A 01-05 03 242	7.235,29 A 01-05 03 243	7.974,79 A 01-05 03 244	8.697,48 A 01-05 03 245	9.445,38 A 01-05 03 246

PVC solar version

	4.247,90 A 01-02 03 242	4.735,29 A 01-02 03 243	5.214,29 A 01-02 03 244	5.701,68 A 01-02 03 245	6.180,67 A 01-02 03 246

PVC white version

	2.794,12 A 01-01 03 242	3.096,64 A 01-01 03 243	3.411,76 A 01-01 03 244	3.701,68 A 01-01 03 245	4.004,20 A 01-01 03 246

PVC grey version

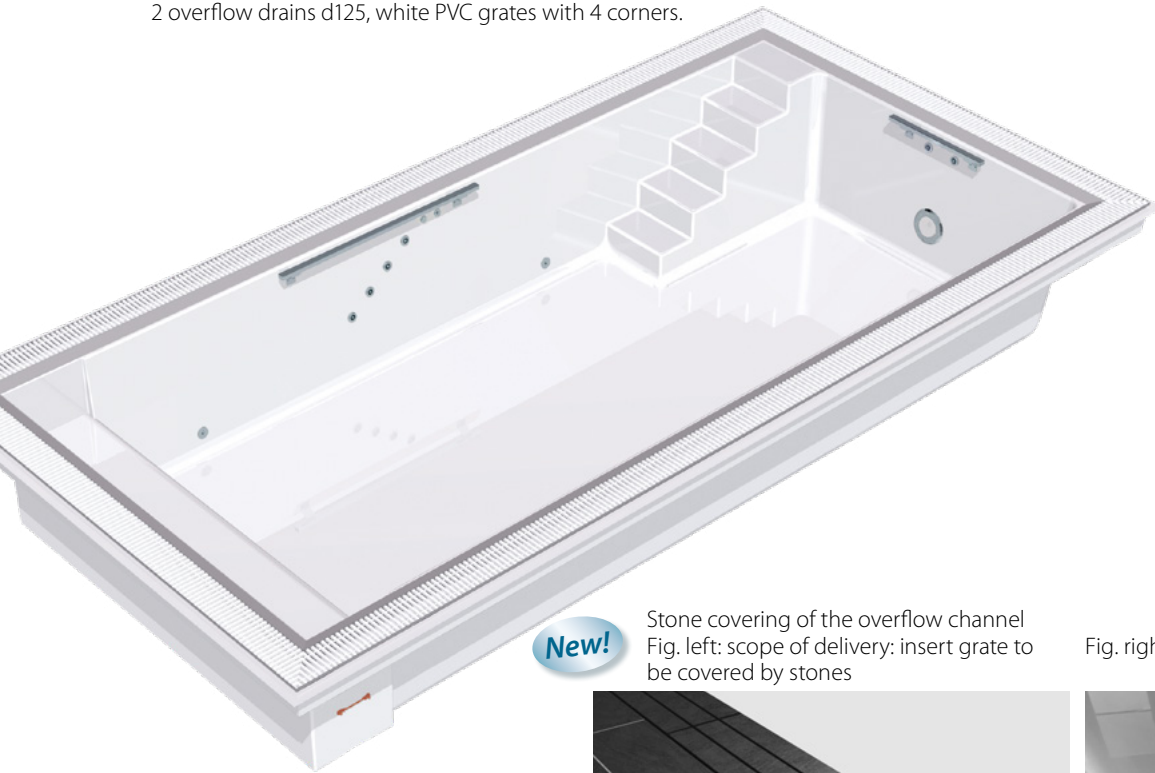
	2.794,12 A 01-03 03 242	3.096,64 A 01-03 03 243	3.411,76 A 01-03 03 244	3.701,68 A 01-03 03 245	4.004,20 A 01-03 03 246

FREIGHT CHARGES on request

* Rom 1145 with roller shutter cover: Freight charges on request

Ancona with overflow channel – One-piece polyester pool made out of Epoxy-Acrylate.

Pool step with 5 steps on the right side with anti-slip profiled surface. Pool with 3 cm insulation in the floor and 2 cm insulation in the walls. White plastic overflow gutter, adjustable overflow weir, tiles and epoxy glue for installation on site. 2 overflow drains d125, white PVC grates with 4 corners.



New!

Stone covering of the overflow channel
Fig. left: scope of delivery: insert grate to be covered by stones

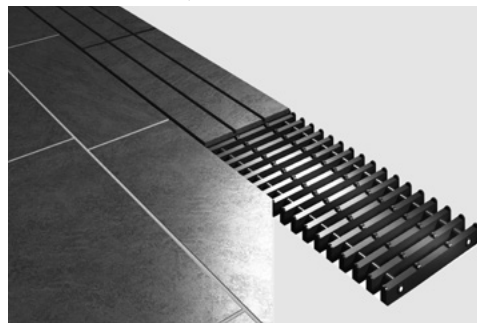
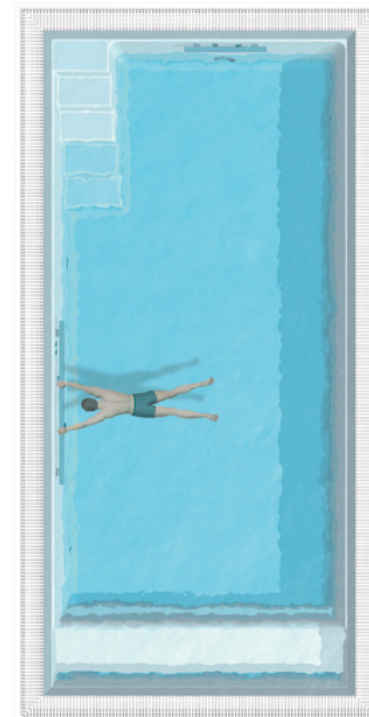


Fig. right: example of on-site finish



D•LINE ANCONA with overflow channel



D•Line ANCONA with overflow channel

Colours: • plain white

- papyrus (08) • plain silver-grey (24)
- sea blue (02) • sand (05) • white, with steps in grey or sea blue (01)
- granicite stone grey

EQUIPMENT PACKAGE Ü, private use

1 wall low level suction, 1 bottom outlet sump with cover, 4 (6) inlet jets 105, vacuum point, 1 underwater light, LED white, with transformer, polished

Additional underwater light with screwed-on red brass niche, 100 VA transformer

ACCESSORIES

Prefabricated kit for pools with overflow channel with gutter, white, adjustable overflow weir of GRP, water-side tiles and epoxy glue for installation on site included

New! **Prefabricated kit for pools with overflow channel with stone cover**, adjustable overflow weir made of GRP, with plastic insert grate for on-site bonding of tiles/stone slabs

Hot tap sampling point, 2 suction fittings 2", female thread, suction grilles ø200 mm for 14,3 m³/h each, polished

2 underwater lights, LED white, with transformer, polished

Twinjet 1000 counter current unit, double jet system with 2 air regulator, piezo switch, pump 2.6 kW- 400 V, nozzles with 2" connection can be installed in the backfilling concrete, piping to be done at the site

Healthstream massage system 4-22, 4 Superjet massage jets, pump 2.2 kW, 1 air control and piezo switch

Safety suction fittings for pools without roller shutter shaft according to DIN EN 16713 to be installed in the pool area. 2 x 2 1/2", suction grille ø350 mm, Qmax = 52,7 m³/h, additional price

WATER TANKS (page 25)

INLINE ROLLER SHUTTER INLINE

Roller shutter installed on the bottom of a pool, roll cover housed in a hinged Inline bench pre-installed, with 2 nozzles 1,5" under the bench, Additional water content: 1,2 m³

Electrical roll-up fixture RSK, 24 V DC, drive shaft made from composite material with internal gear motor with 4 m cable and stainless steel wall fixings, installed in the factory; incl. control box and key switch

ditto, but with control panel with transponder

Roller shutter cover, 6 cm slat width

Cover: **Polycarbonate solar** version

Polycarbonate solar, version silver vaporized

PVC solar version

PVC white version

PVC grey version

STEEL WALL SUPPORTS

Galvanized, laminated to the 4 sides of the pool shell in the factory

For installation on site, non-fixed

FREIGHT CHARGES on request

800 Ü
8,61 x 4,31 x 1,35 m

1000 Ü
10,61 x 4,31 x 1,35 m

34.378,15

A AncÜ 800 010 03

35.004,20

A AncÜ 800 010 ..

41.197,48

A AncÜ 800 010 22

39.298,32

A AncÜ 1000 010 03

39.978,99

A AncÜ 1000 010 ..

47.462,18

A AncÜ 1000 010 22

Water content m³

34

43

2.054,62

3 540 135

844,54

A 3 531 355

2.323,53

3 540 145

844,54

A 3 531 355

6.970,59

A 2 401 024

6.789,92

A 2 401 224

621,85

B 4 230 110

1.218,49

A 3 202 080

5.470,59

B 3 590 067

4.508,40

B 3 594 550

752,10

B 3 590 250

8.025,21

A 2 401 026

7.894,96

A 2 401 226

621,85

B 4 230 110

1.218,49

A 3 202 080

5.470,59

B 3 590 067

4.508,40

B 3 594 550

752,10

B 3 590 250

7.899,16

A 2 200 355

5.718,49

A 22 003 310

6.109,24

A 22 003 311

5.777,31

A 01-04 05 204

6.651,26

A 01-05 05 204

4.331,93

A 01-02 05 204

2.760,50

A 01-01 05 204

2.760,50

A 01-03 05 204

7.899,16

A 2 200 355

5.718,49

A 22 003 310

6.109,24

A 22 003 311

7.071,43

A 01-04 05 206

8.121,85

A 01-05 05 206

5.298,32

A 01-02 05 206

3.352,94

A 01-01 05 206

3.352,94

A 01-03 05 206

13.718,49

A 2 400 503

11.474,79

A 2 400 603

16.071,43

A 2 400 541

13.432,77

A 2 400 641

LINEAR with overflow channel – One-piece polyester pool made out of Epoxy-Acrylate.

Sandwich construction with 2 cm wall insulation and 3 cm insulation in the floor. White plastic overflow gutter, adjustable overflow weir, tiles and epoxy glue for installation on site. 2 overflow drains d125, white PVC grates with corners.



New!

Stone covering of the overflow channel
Fig. left: scope of delivery: insert grate to be covered by stones

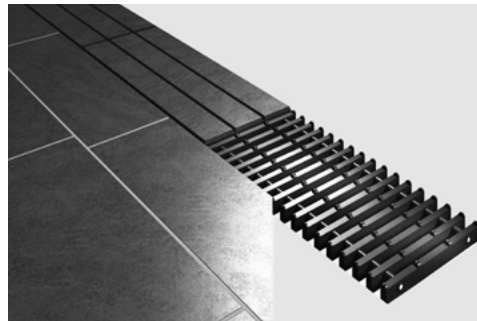
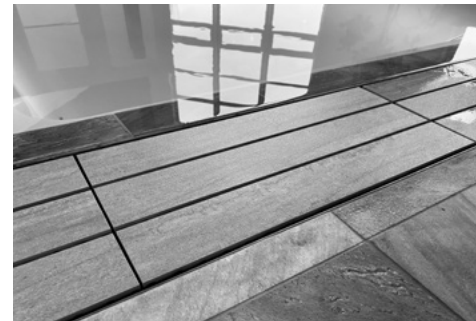
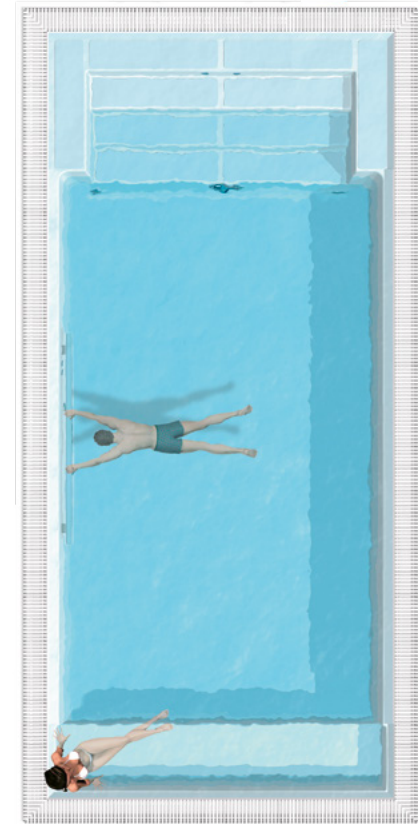


Fig. right: example of on-site finish



D•LINE LINEAR with overflow channel



D-Line LINEAR with overflow channel

Colours: • plain white

• papyrus (08) • plain silver-grey (24)

• sea blue (02) • sand (05) • white, with steps in grey or sea blue (01)

• granicite stone grey

EQUIPMENT PACKAGE Ü, private use

Water content m³

1 wall low level suction, 1 bottom outlet sump with cover, 4 (6) inlet jets 105, vacuum point, 1 underwater light, LED white, with transformer, polished

Additional underwater light with screwed-on red brass niche, 100 VA transformer

ACCESSORIES

Prefabricated kit for pools with overflow channel with gutter, white, adjustable overflow weir of GRP, water-side tiles and epoxy glue for installation on site included

New!

Prefabricated kit for pools with overflow channel with stone cover, adjustable overflow weir made of GRP, with plastic insert grate for on-site bonding of tiles/stone slabs

Hot tap sampling point, 2 suction fittings 2", female thread, suction grilles ø200 mm for 14,3 m³/h each, polished

2 underwater lights, LED white, with transformer, polished

Twinjet 1000 counter current unit, double jet system with 2 air regulator, piezo switch, pump 2.6 kW-400 V, nozzles with 2" connection can be installed in the backfilling concrete, piping to be done at the site

Healthstream massage system 4-22, 4 Superjet massage jets, pump 2.2 kW, 1 air control and piezo switch

Safety suction fittings for pools without roller shutter shaft according to DIN EN 16 713 to be installed in the pool area. 2 x 2 1/2", suction grille ø350 mm, Q_{max} = 52,7 m³/h, additional price

WATER TANKS (page 25)

INLINE ROLLER SHUTTER INLINE

Roller shutter installed on the bottom of a pool, roll cover housed in a hinged Inline bench pre-installed, with 2 nozzles 1,5" under the bench, Additional water content: 1,2 m³

Electrical roll-up fixture RSK, 24 V DC, drive shaft made from composite material with internal gear motor with 4 m cable and stainless steel wall fixings, installed in the factory; incl. control box and key switch

ditto, but with control panel with transponder

Roller shutter cover, 6 cm slat width

Cover: **Polycarbonate solar** version

Polycarbonate solar, version silver vaporized

PVC solar version

PVC white version

PVC grey version

STEEL WALL SUPPORTS

Galvanized, laminated to the 4 sides of the pool shell in the factory

For installation on site, non-fixed

FREIGHT CHARGES on request

	745 Ü 8,10 x 4,31 x 1,35 m	845 Ü 9,10 x 4,31 x 1,35 m	945 Ü 10,10 x 4,31 x 1,35 m	1045 Ü 11,10 x 4,31 x 1,35 m	1145 Ü 12,10 x 4,31 x 1,35 m
	33.306,72 A LinÜ 745 010 03	35.747,90 A LinÜ 845 010 03	38.189,08 A LinÜ 945 010 03	40.642,86 A LinÜ 1045 010 03	43.100,84 A LinÜ 1145 010 03
	33.819,33 A LinÜ 745 010 ..	36.264,71 A LinÜ 845 010 ..	38.710,08 A LinÜ 945 010 ..	41.155,46 A LinÜ 1045 010 ..	43.605,04 A LinÜ 1145 010 ..
	39.533,61 A LinÜ 745 010 22	42.403,36 A LinÜ 845 010 22	45.294,12 A LinÜ 945 010 22	48.180,67 A LinÜ 1045 010 22	51.067,23 A LinÜ 1145 010 22
	28	33	37	42	46
	2.054,62 3 540 130	2.054,62 3 540 130	2.054,62 3 540 130	2.323,53 3 540 140	2.323,53 3 540 140
	844,54 A 3 531 355	844,54 A 3 531 355	844,54 A 3 531 355	844,54 A 3 531 355	844,54 A 3 531 355
	6.806,72 A 2 401 052	7.235,29 A 2 401 053	7.760,50 A 2 401 054	8.281,51 A 2 401 055	8.705,88 A 2 401 056
	6.487,39 A 2 401 252	7.046,22 A 2 401 253	7.596,64 A 2 401 254	8.147,06 A 2 401 255	8.701,68 A 2 401 256
	621,85 B 4 230 110	621,85 B 4 230 110	621,85 B 4 230 110	621,85 B 4 230 110	621,85 B 4 230 110
	1.218,49 A 3 202 080	1.218,49 A 3 202 080	1.218,49 A 3 202 080	1.218,49 A 3 202 080	1.218,49 A 3 202 080
	5.470,59 B 3 590 067	5.470,59 B 3 590 067	5.470,59 B 3 590 067	5.470,59 B 3 590 067	5.470,59 B 3 590 067
	4.508,40 B 3 594 550	4.508,40 B 3 594 550	4.508,40 B 3 594 550	4.508,40 B 3 594 550	4.508,40 B 3 594 550
	752,10 B 3 590 250	752,10 B 3 590 250	752,10 B 3 590 250	752,10 B 3 590 250	752,10 B 3 590 250
	7.899,16 A 2 200 355	7.899,16 A 2 200 355	7.899,16 A 2 200 355	7.899,16 A 2 200 355	7.899,16 A 2 200 355
	5.718,49 A 22 003 310	5.718,49 A 22 003 310	5.718,49 A 22 003 310	5.718,49 A 22 003 310	5.718,49 A 22 003 310
	6.109,24 A 22 003 311	6.109,24 A 22 003 311	6.109,24 A 22 003 311	6.109,24 A 22 003 311	6.109,24 A 22 003 311
	5.579,83 A 01-04 05 232	6.222,69 A 01-04 05 233	6.861,34 A 01-04 05 234	7.500,00 A 01-04 05 235	8.155,46 A 01-04 05 236
	6.411,76 A 01-05 05 232	7.151,26 A 01-05 05 233	7.890,76 A 01-05 05 234	8.617,65 A 01-05 05 235	9.365,55 A 01-05 05 236
	4.180,67 A 01-02 05 232	4.668,07 A 01-02 05 233	5.151,26 A 01-02 05 234	5.634,45 A 01-02 05 235	6.117,65 A 01-02 05 236
	2.743,70 A 01-01 05 232	3.042,02 A 01-01 05 233	3.357,14 A 01-01 05 234	3.651,26 A 01-01 05 235	3.949,58 A 01-01 05 236
	2.743,70 A 01-03 05 232	3.042,02 A 01-03 05 233	3.357,14 A 01-03 05 234	3.651,26 A 01-03 05 235	3.949,58 A 01-03 05 236
	12.781,51 A 2 400 509	13.962,18 A 2 400 510	15.121,85 A 2 400 511	16.306,72 A 2 400 530	17.470,59 A 2 400 531
	10.684,87 A 2 400 609	11.668,07 A 2 400 610	13.512,61 A 2 400 611	14.487,39 A 2 400 630	15.470,59 A 2 400 631

Extensions / Accessories

Overflow channel at the front side

Overflow channel, 47 x 27 cm, connected to the front side of the pool shell but 25 cm lower, incl. glue and filler to fix coping stones on top of the overflow edge (coping stone not included) 2 gutter drains dia 125 mm.

for 320	A 2 115 048	2.621,85
for 370	A 2 115 050	2.924,37
3,20 m channel grating	A 2 115 054	844,54
3,70 m channel grating	A 2 115 055	970,59
New! Pendulum glides with guide rollers	A LAT-005010	100,00



Overflow channel at the front side

Spring

Prefabricated fibreglass basin matching the pool colour, with flange to connect it to the rivulet. Measurements: 130 x 130 x 14 cm

A 2 115 1..

Colours:

white (01)	1.500,00
papyrus (08), silver-grey (24)	1.663,87
sea blue (02), sand (05)	1.663,87
granite stonegrey (22)	2.029,41



Spring

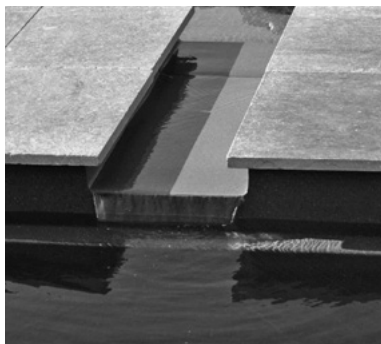
Rivulet 38 cm x 7,5 cm

Prefabricated fibreglass channel, 38 cm in width 7,5 cm deep to be connected to the pool and spring per mtr.

A 2 115 2..

Colours:

white (01)	365,55
papyrus (08), silver-grey (24)	411,76
sea blue (02), sand (05)	411,76
granite stonegrey (22)	638,66

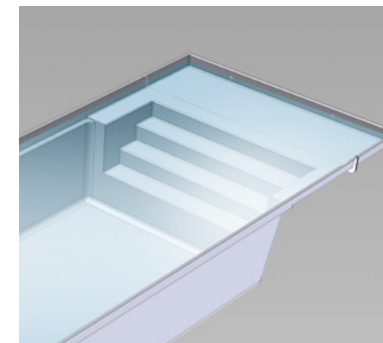


Rivulet

WetLounge® / Shallow water areas

In the same colour as the pool, depth of 23 cm, the full width of the pool, level with the top step. Allowing the shallow water zone to be completely covered by the slatted cover. Incl. 2 inlets 1 1/2", 4 x 8 mm.

2 m long for 370 , laminated	A 2 115 370	5.008,40
1,8 m long for 370 , flanged	A 2 115 360	6.836,13
2 m long for 320 , laminated (not for Ancona 1000/320)	A 2 115 340	4.428,57
1,8 m long for 320 , flanged	A 2 115 330	6.247,90



WetLounge shallow water areas

New! Decor tiles made of Ezarri glass mosaic

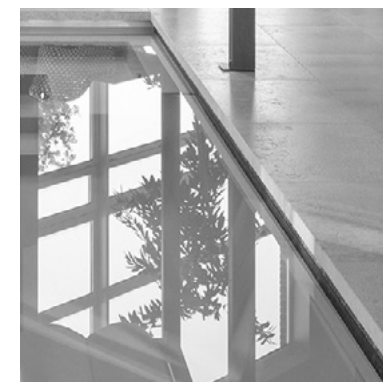
Decor tiles made of Ezarri glass mosaic, series „Zen“ or „Iris“, installed and grouted at the factory.

Price per meter	A 3 916 360	83,19
-----------------	-------------	--------------

Series and colours at: www.ezarri.com



Decor tiles made of Ezarri glass mosaic



FREIGHT CHARGES: on request

Stainless steel handrail 1 m, square tube

polished, 1 m long, with 2 mounting flange and wall anchors, per piece

A 2 302 086 **432,77**

Stainless steel handrail 2 m, square tube

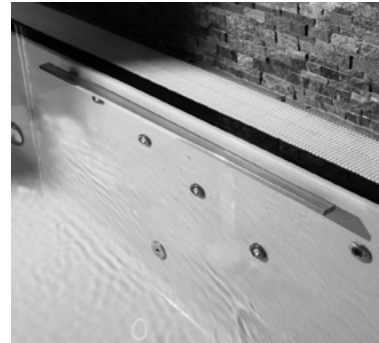
polished, 2 m long, with 2 mounting flange and wall anchors, per piece

A 2 302 080 **651,26**

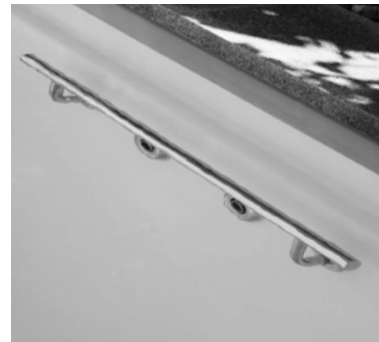
Stainless steel handrail long, round tube

polished

A 2 303 080 **584,03**



Stainless steel handrail long, polished



Stainless steel handrail long, round tube

Water tank

GRP, insulated with 30 mm PU-foam. Tank in one-piece. Cleaning hole Ø500 mm, PVC fitting for connection to the overflow channel d110 mm, suction connection PVC d75 mm, overflow and drainage fitting.

Water tank 1.000 l capacity

Dimensions: 2,00 x 1,15 x 0,80 m

A 5 310 500 **2.399,16**

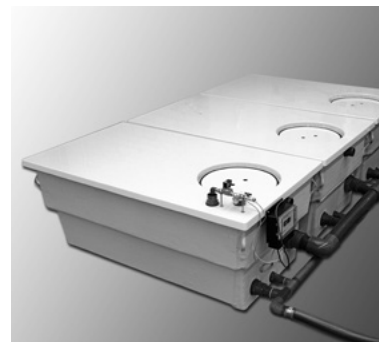
Water tank 2.000 l capacity

Dimensions: 2,00 x 1,90 x 0,80 m

A 5 320 100 **3.857,14**

Water level and pump control, incl. mains water solenoid valve

A 5 350 100 **1.294,12**



Water tank

Roller shutter niche for skimmer pools

The roller shutter will be installed behind the pool wall and below the coping stones. It extends the pool by 25 cm and protrudes 50 cm into the pool. For inspection purposes the screen can be totally removed. 2 nozzles are installed in the niche and there is a plane surface for installation of the skimmer. Skimmer is not automatically included and has to be ordered separately! Attention: Pools with 320 cm width, the niche is flanged and bolted.

Pool type: **370** A 2 200 510 **8.109,24**

320 A 2 200 515 **6.915,97**



Roller shutter niche for skimmer pools

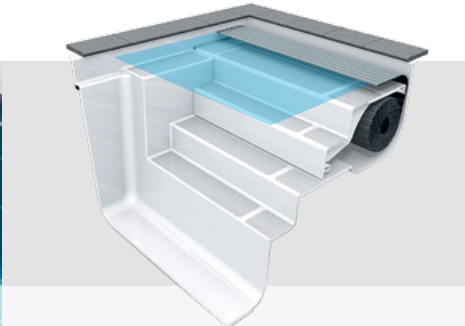
Caution: In the 320 pool, the niche is flanged and screwed in place. In conjunction with the flanging, insulation that is 3 cm thicker is incorporated in the pool base, so that the flange is flush with the pool base on the outside. External height 157 cm!

Please note: Individual shipment!

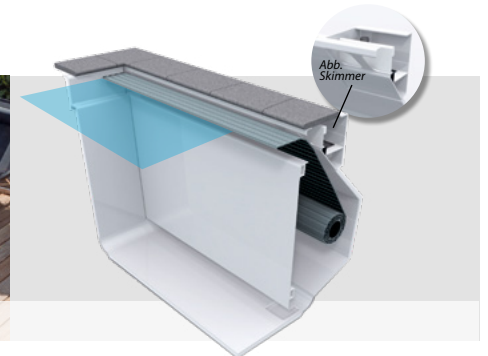
Examples of RivieraPool roller shutter systems



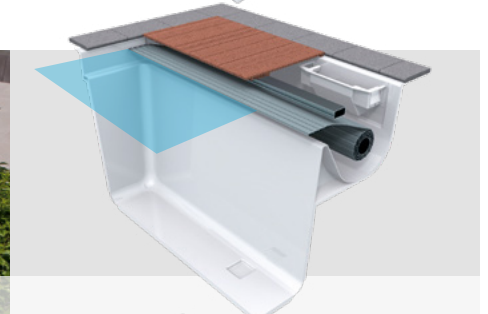
Roller shutter shaft Linear RS



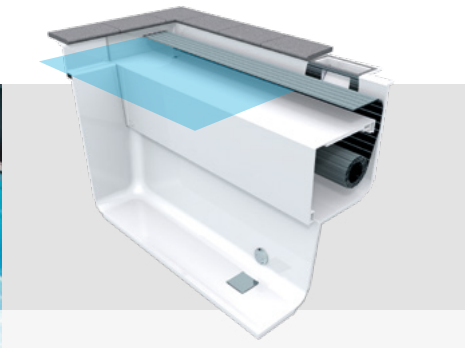
Roller shutter niche



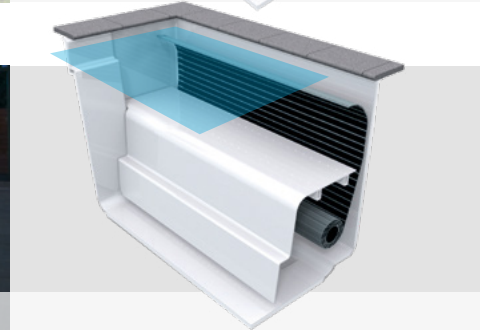
Underground roller shutter shaft



Roller shutter Integra 2-13



Inline roller shutter



www.rivierapool.com

RivieraPool®

One of the leading manufacturers of prefabricated swimmingpool technology and spas. BSW member.



RivieraPool Fertigschwimmbad GmbH • Klöcknerstraße 2 • D-49744 Geeste • Tel. +49 5937 660 • E-Mail: info@pools.de

Date: 01.01.2021